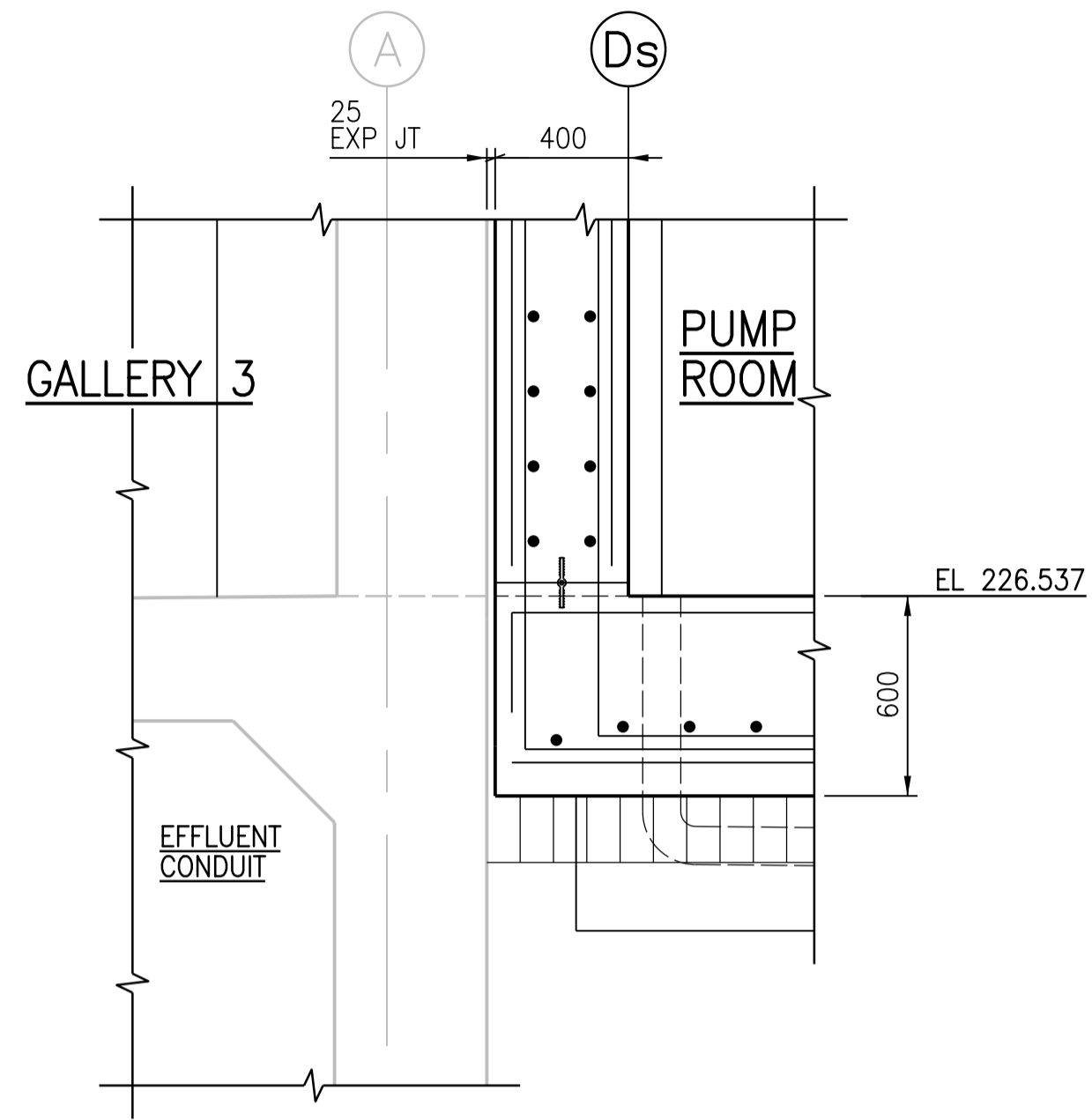
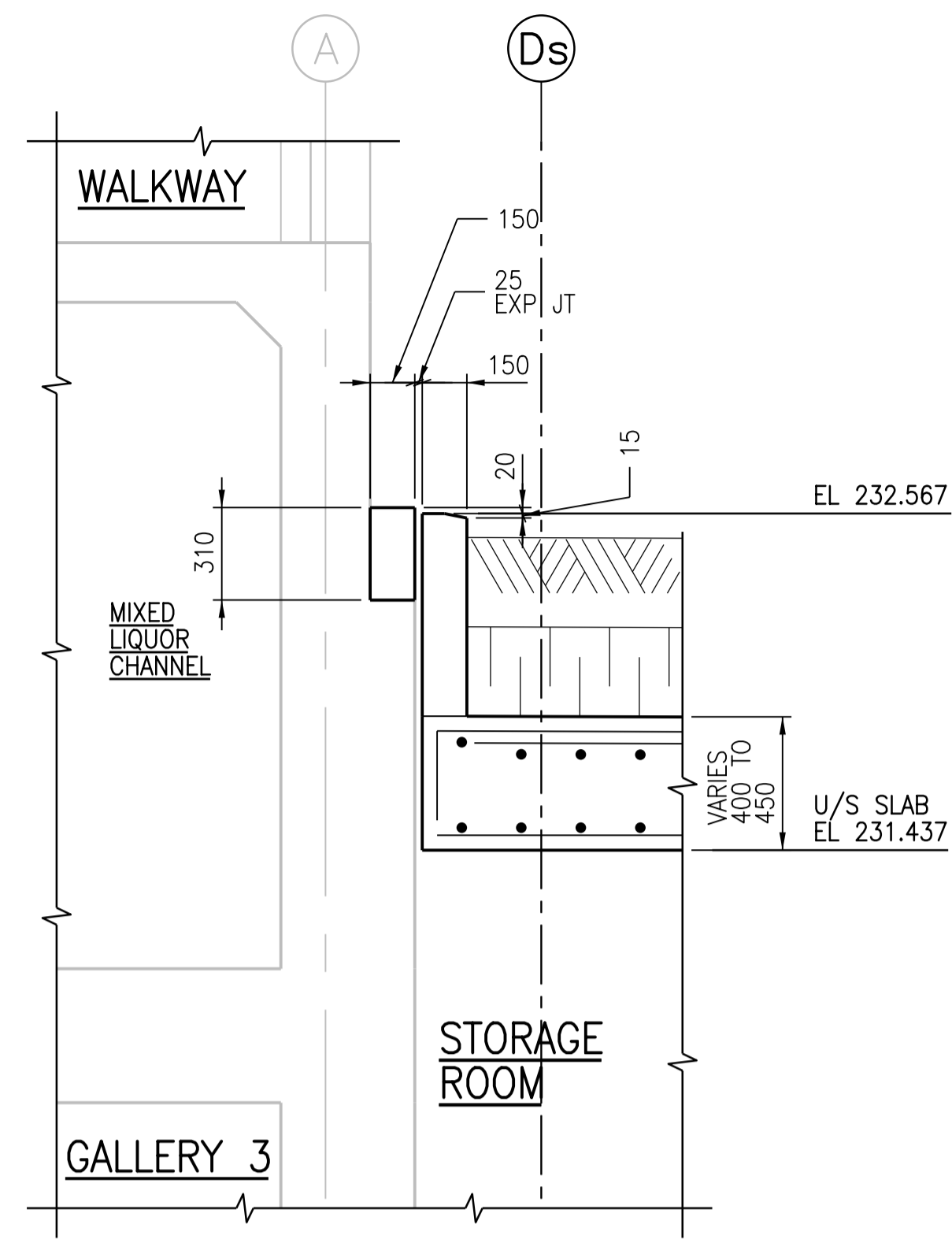


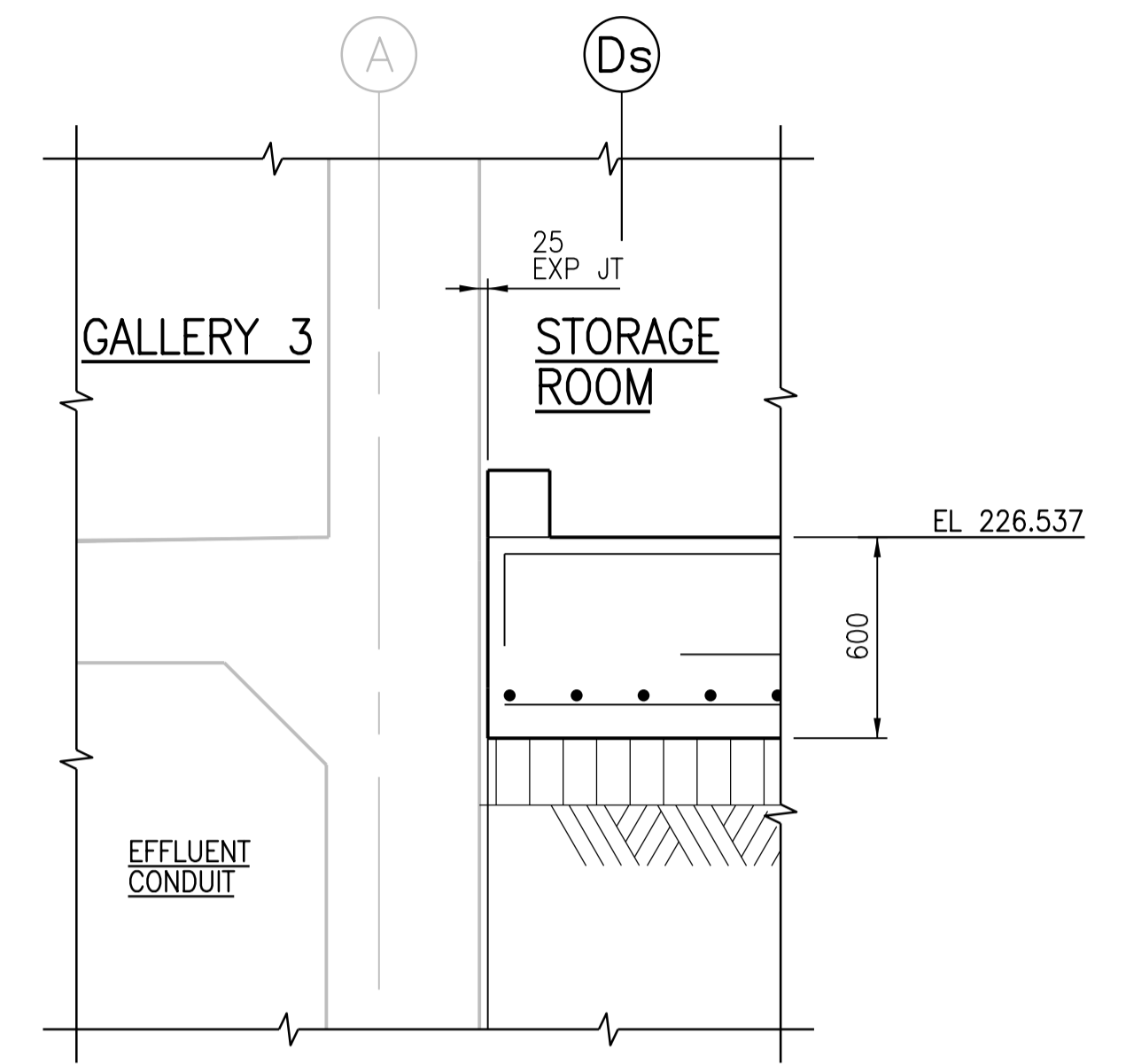
1 DETAIL
1:20
SGAD-S030



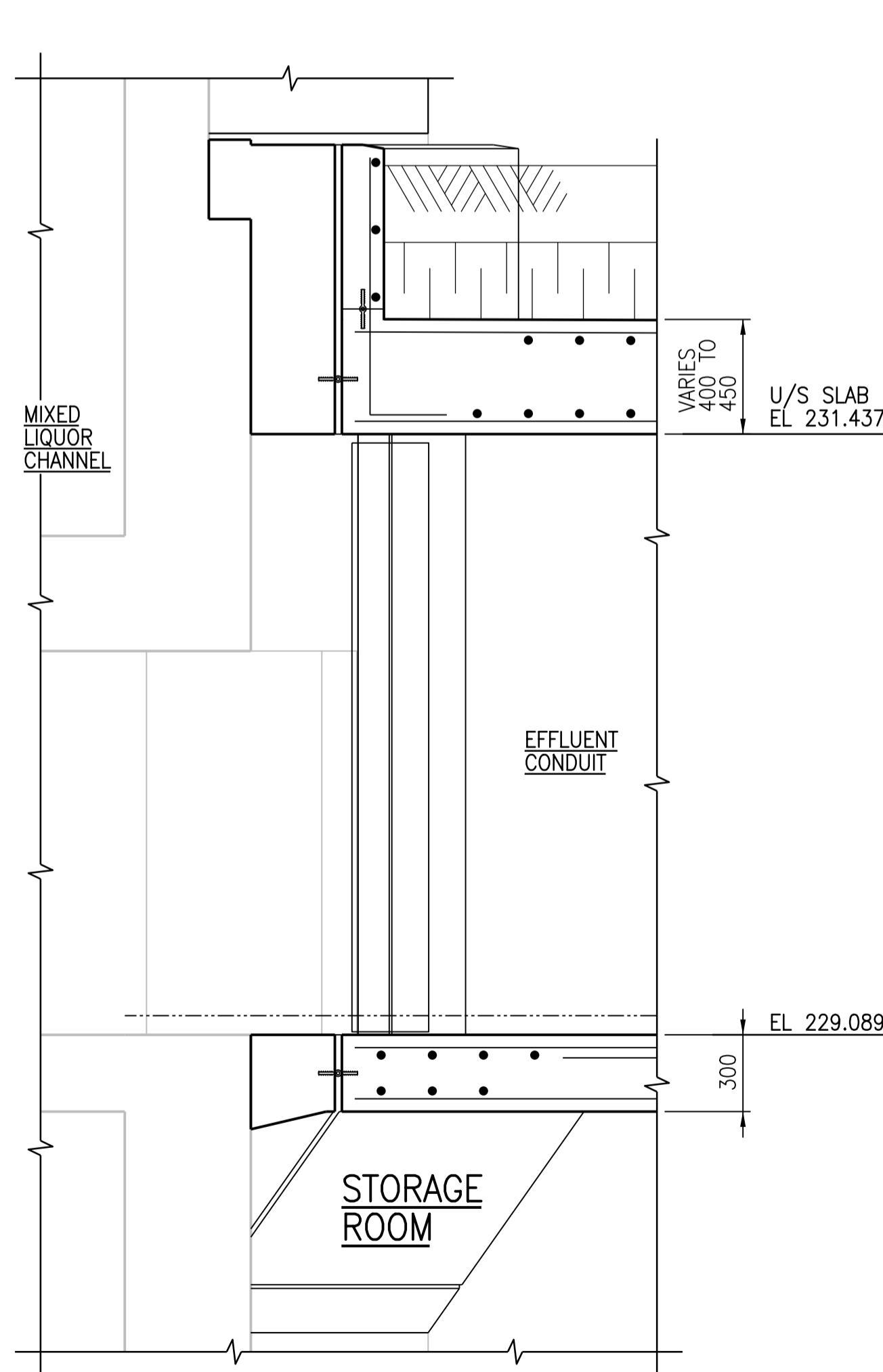
2 DETAIL
1:20
SGAD-S030



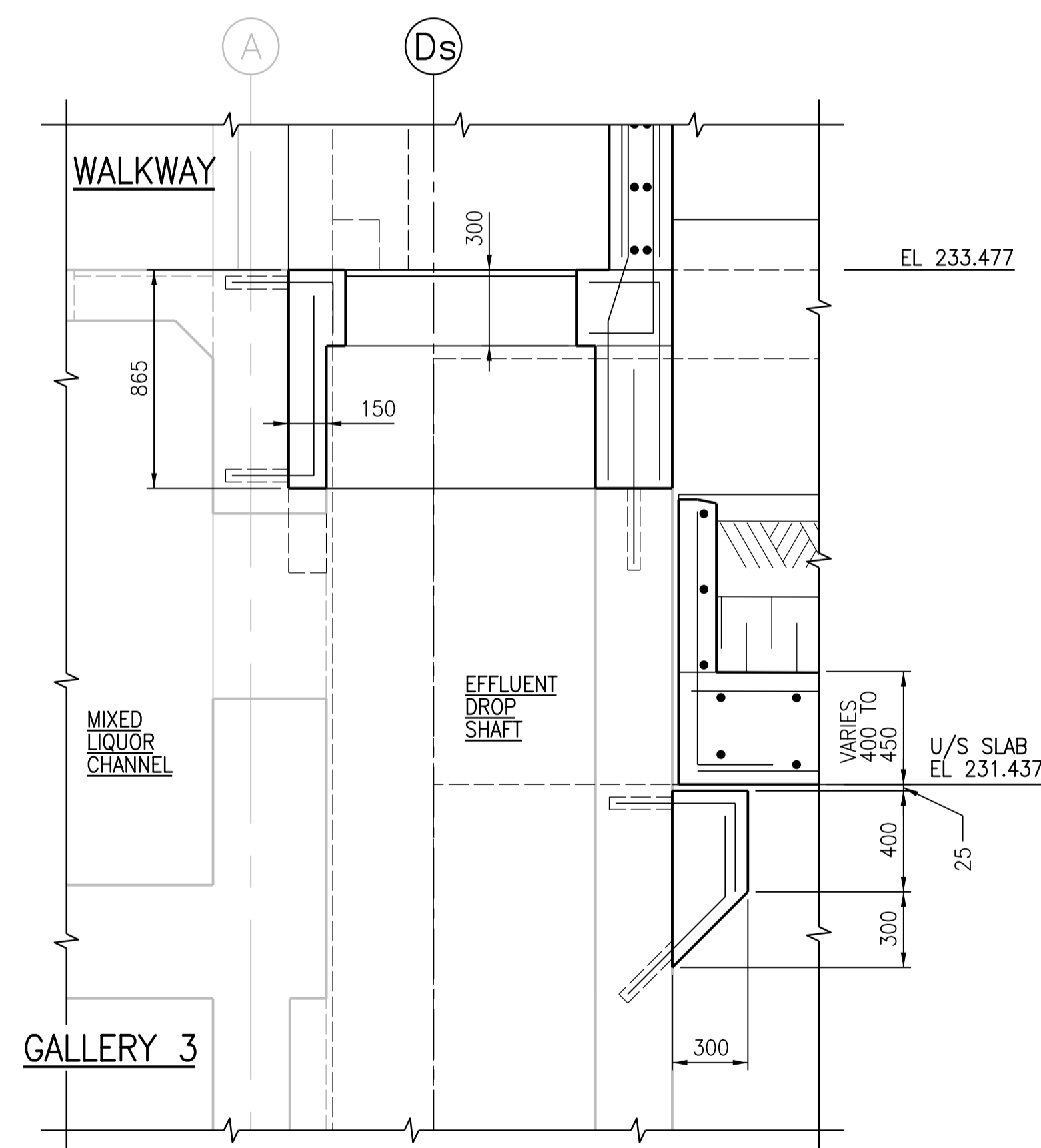
3 DETAIL
1:20
SGAD-S030



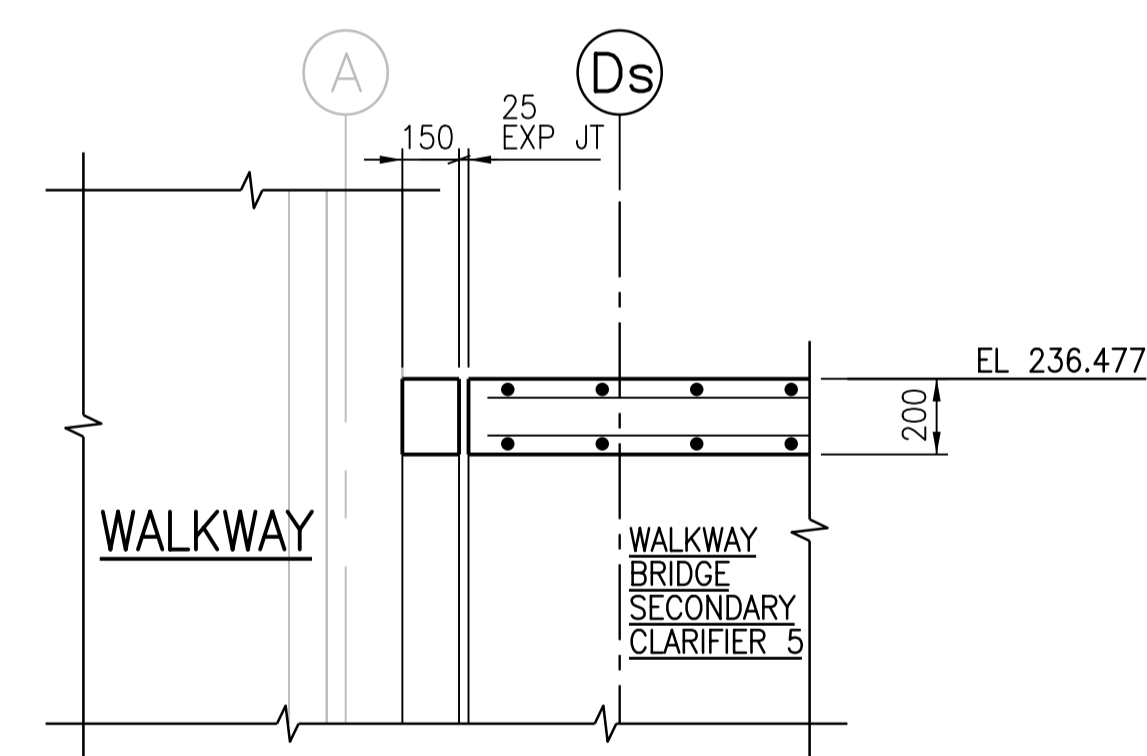
4 DETAIL
1:20
SGAD-S030



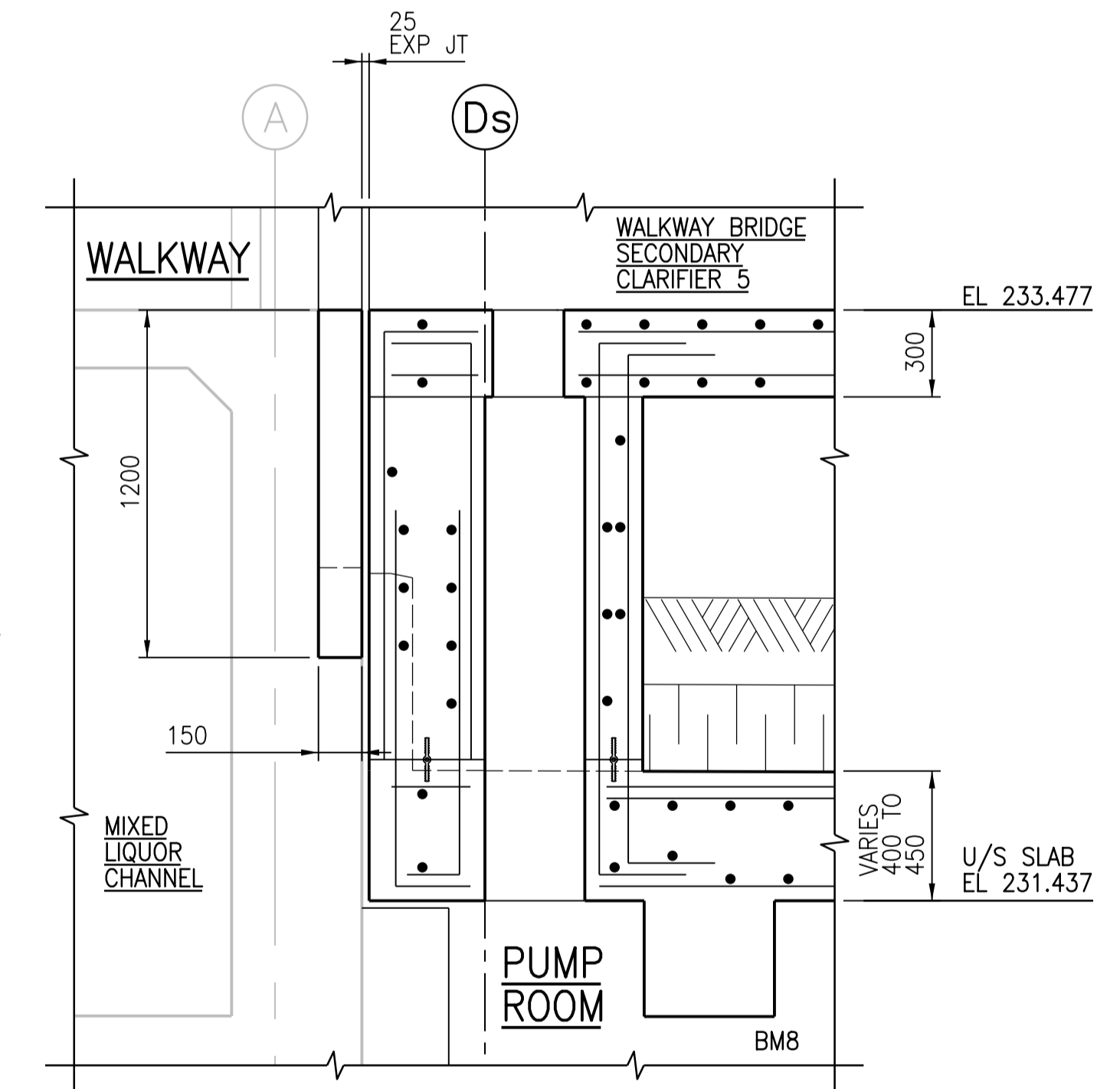
5 DETAIL
1:20
SGAD-S031



6 DETAIL
1:20
SGAD-S032



7 DETAIL
1:20
SGAD-S032

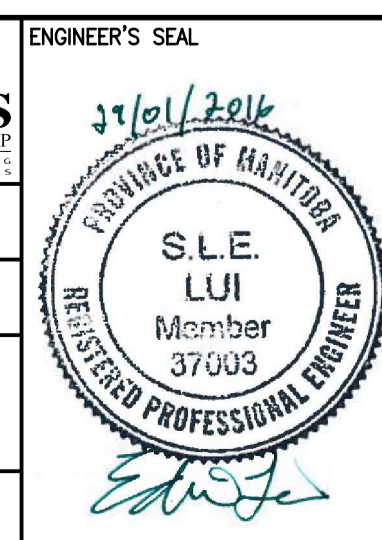


8 DETAIL
1:20
SGAD-S032



NO.	REVISIONS	DATE	DESIGN	CHECK
00	ISSUED FOR TENDER - B.O. 899-2015	01/2016	G.O.	J.C.

CH2MHILL		KCS GROUP	
SNC-LAVALIN		ENGINEERING CONSULTANTS	
DESIGNED BY: A THAKKAR	CHECKED BY: R. PARIKH	ENGINEER'S SEAL	
DRAWN BY: G. OMORI	APPROVED BY: H.T. FREIHAMMER		
SCALE: 1:20	ISSUED FOR CONSTRUCTION BY: T. TURZAK		
DATE: 2016/01/29	DATE: 2016/01/29	CONSULTANT NO.: 474248	



THE CITY OF WINNIPEG WATER AND WASTE DEPARTMENT		
SOUTH END WATER POLLUTION CONTROL CENTRE SEWPCC UPGRADING/EXPANSION PROJECT STRUCTURAL SECONDARY CLARIFIERS 4 AND 5 DETAILS		
CITY DRAWING NUMBER 1-0102-SDTL-S014	SHEET 001	REV. SIZE 00 A1