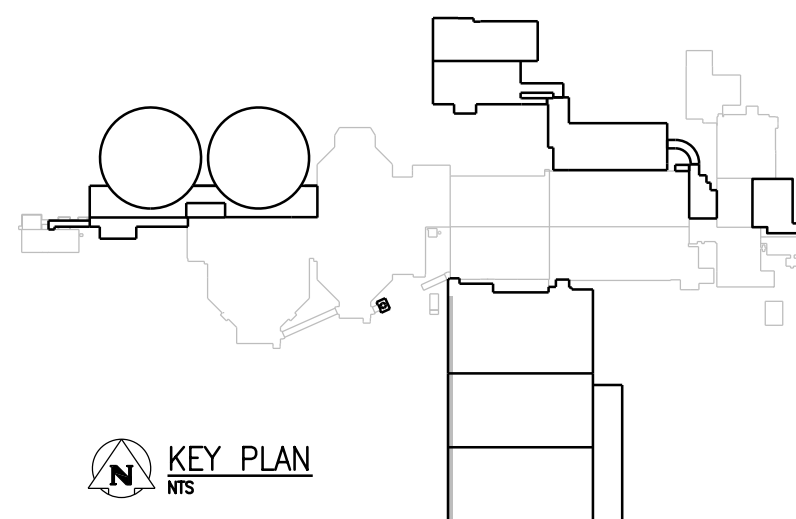


PART PILING PLAN

1:100



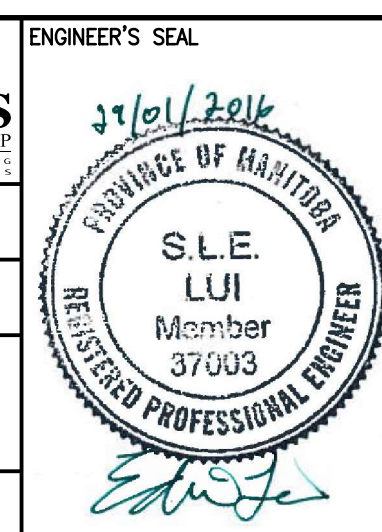
NOTES:

1. REFER TO DRAWING 1-0102-SGAD-A001 FOR GENERAL STRUCTURAL NOTES.
2. PILE DIAMETER (D) = 400mm
3. ESTIMATED PILE REFUSAL EL 210.000
4. PILE CUT-OFF ELEVATION = 229.713
5. TOTAL NUMBER OF PILES TO BE INSTALLED ON THIS DRAWING = 20



NO.	REVISIONS	DATE	DESIGN	CHECK
00	ISSUED FOR TENDER - B.O. 899-2015	01/2016	C.R.	J.C.

CH2MHILL		KGS	
SNC-LAVALIN		GROUP	
DESIGNED BY: J. THANNICKAL	CHECKED BY: E. LUI	ENGINEER'S SEAL	
DRAWN BY: C. RYNARD	APPROVED BY: H.T. FREIHAMMER		
SCALE: 1:100	ISSUED FOR CONSTRUCTION BY: T. TURZAK		
DATE: 2016/01/29	DATE: 2016/01/29	CONSULTANT NO.: 474248	



THE CITY OF WINNIPEG
Winnipeg WATER AND WASTE DEPARTMENT

SOUTH END WATER POLLUTION CONTROL CENTRE
SEWPCC UPGRADING/EXPANSION PROJECT
STRUCTURAL BIOREACTORS
PART PILING PLAN (6)

CITY DRAWING NUMBER	SHEET	REV.	SIZE
1-0102-SFDW-R006	001	00	A1