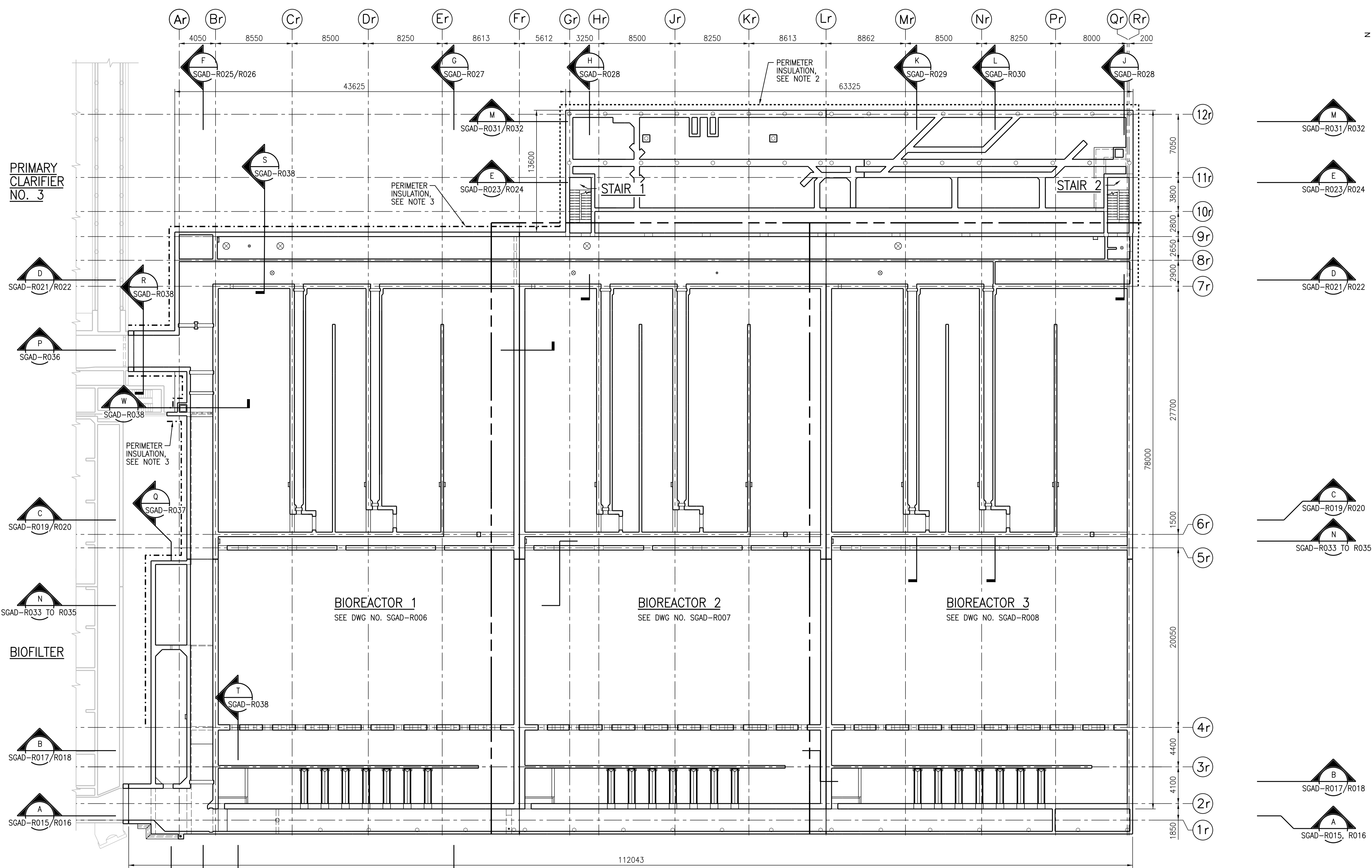
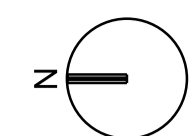
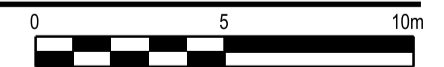


A1 SIZE - 594mm x 841mm



**OVERALL CHANNEL LEVEL PLAN**  
1:200

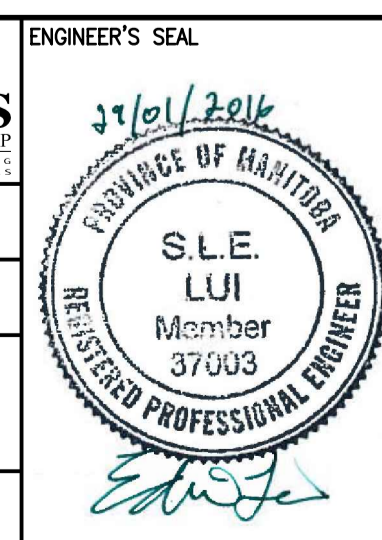


- NOTES:**
- REFER TO DRAWING 1-0102-SGAD-A001 FOR GENERAL STRUCTURAL NOTES.
  - INSTALL PERIMETER INSULATION STARTING FROM EL 232.400 AND CARRIED DOWN 2150mm
  - INSTALL PERIMETER INSULATION STARTING FROM EL 232.400 AND CARRIED DOWN 2900mm
  - A MINIMUM LEVEL OF COMPACTED BACKFILL AT WEST AND EAST ENDS OF BIOREACTOR TANKS IS REQUIRED FOR OPERATION. TANKS MUST BE EMPTIED PRIOR TO EXCAVATING ELOW THIS ELEVATION, SEE DRAWING



00	ISSUED FOR TENDER - B.O. 899-2015	01/2016	C.R.	J.C.
NO.	REVISIONS	DATE	DESIGN	CHECK

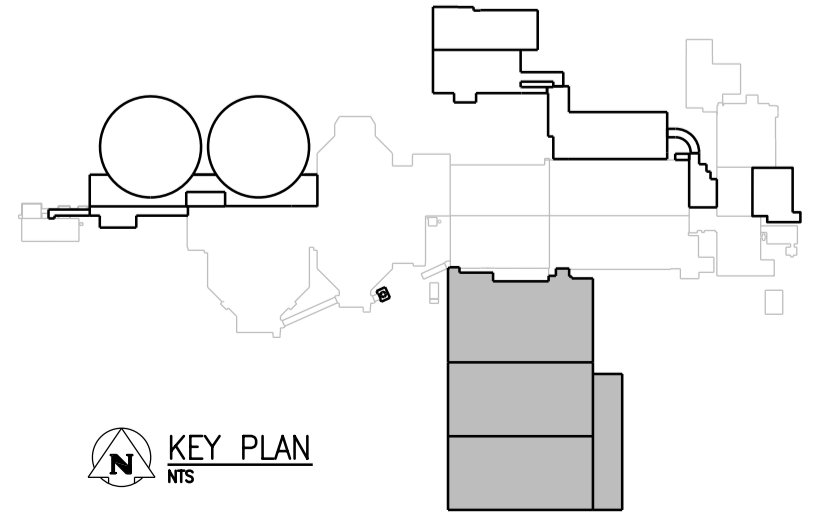
<b>CH2MHILL</b>		<b>KGS GROUP</b>	
SNC-LAVALIN		ENGINEER'S SEAL	
DESIGNED BY: J. THANNICKAL	CHECKED BY: E. LUI		
DRAWN BY: C. RYNARD	APPROVED BY: H.T. FREIHAMMER		
SCALE: 1:200	ISSUED FOR CONSTRUCTION BY: T. TURZAK		
DATE: 2016/01/29	DATE: 2016/01/29		
CONSULTANT NO.: 474248		FILE NAME:	



**THE CITY OF WINNIPEG**  
Winnipeg  
WATER AND WASTE DEPARTMENT

SOUTH END WATER POLLUTION CONTROL CENTRE  
SEWPC UPGRADING/EXPANSION PROJECT  
STRUCTURAL  
BIOREACTORS/BLOWER BUILDING  
OVERALL CHANNEL LEVEL PLAN

CITY DRAWING NUMBER: 1-0102-SGAD-R005  
SHEET: 001  
REV.: 00  
SIZE: A1



©CH2M HILL 2015. ALL RIGHTS RESERVED.