

**G SECTION**  
1:50

SGAD-R001, SGAD-R002, SGAD-R005,  
SGAD-R006, SGAD-R009, SGAD-R010

**NOTES:**

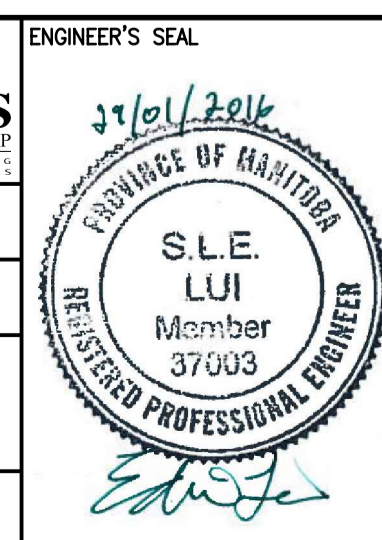
- WEST AND EAST ENDS OF TANKS MUST BE BACKFILLED AS SHOWN TO A MINIMUM ELEVATION OF 229.438 FOR OPERATION OF TANKS OR PERFORMANCE OF LEAKAGE TESTING. FOR LEAKAGE TESTING SEE SPECIFICATIONS AND DETAIL.
- USE CLASS 4 BACKFILL COMPACTED TO 98% SPMD UNLESS NOTED OTHERWISE ON DRAWINGS.

5  
SDTL-R004



NO.	REVISIONS	DATE	DESIGN	CHECK
00	ISSUED FOR TENDER - B.O. 899-2015	01/2016	C.R.	J.C.

<b>CH2MHILL</b>		<b>KGS GROUP</b>	
DESIGNED BY: J. THANNICKAL	CHECKED BY: E. LUI	ENGINEER'S SEAL	
DRAWN BY: C. RYNARD	APPROVED BY: H.T. FREIHAMMER		
SCALE: 1:50	ISSUED FOR CONSTRUCTION BY: T. TURZAK		
DATE: 2016/01/29	DATE: 2016/01/29	CONSULTANT NO.: 474248	



**THE CITY OF WINNIPEG**  
Winnipeg WATER AND WASTE DEPARTMENT

SOUTH END WATER POLLUTION CONTROL CENTRE  
SEWPPC UPGRADING/EXPANSION PROJECT  
STRUCTURAL  
BIOREACTORS/BLOWER BUILDING  
SECTION G

CITY DRAWING NUMBER: 1-0102-SGAD-R027  
SHEET: 001  
REV: 00  
SIZE: A1