

**K SECTION**  
1:50

SGAD-R001, SGAD-R004,  
SGAD-R005, SGAD-R008,  
SGAD-R009, SGAD-R012,  
SGAD-R013, SGAD-R014

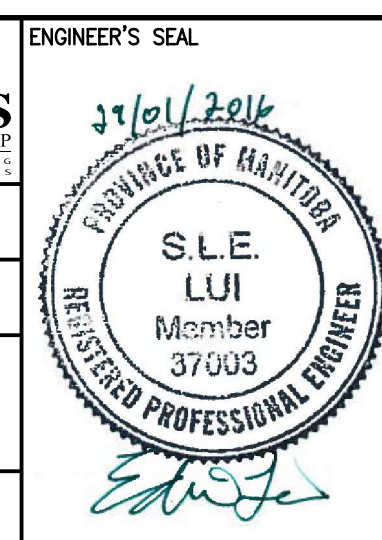
**NOTES:**

- DO NOT REMOVE SHORING SUPPORT OF SLAB UNTIL ENTIRETY OF WALL ALONG GRIDLINE 9r ABOVE FROM STAIR NO.1 TO STAIR NO.2 HAS REACHED 75% OF IT'S REQUIRED DESIGN STRENGTH.
- USE CLASS 4 BACKFILL COMPACTED TO 98% SPMD UNLESS NOTED OTHERWISE ON DRAWINGS.



00	ISSUED FOR TENDER - B.O. 899-2015	01/2016	C.R.	J.C.
NO.	REVISIONS	DATE	DESIGN	CHECK

<b>CH2MHILL</b>		<b>KCS GROUP</b>	
SNC-LAVALIN			
DESIGNED BY: J. THANNICKAL	CHECKED BY: E. LUI	ENGINEER'S SEAL	
DRAWN BY: C. RYNARD	APPROVED BY: H.T. FREIHAMMER	PROVINCE OF MANITOBA REGISTERED PROFESSIONAL ENGINEER S.L.E. LUI Member 37003	
SCALE: 1:50	ISSUED FOR CONSTRUCTION	BY: T. TURZAK	
DATE: 2016/01/29	DATE: 2016/01/29	CONSULTANT NO.: 474248	



**THE CITY OF WINNIPEG**  
Winnipeg WATER AND WASTE DEPARTMENT

SOUTH END WATER POLLUTION CONTROL CENTRE  
SEWPC UPGRADING/EXPANSION PROJECT  
STRUCTURAL  
BIOREACTORS/BLOWER BUILDING  
SECTION K

CITY DRAWING NUMBER: 1-0102-SGAD-R029  
SHEET: 001  
REV: 00  
SIZE: A1