

NOTE:
 1. DETAILS, REINFORCEMENT AND OTHER ITEMS FOR SECONDARY CLARIFIER 5 ARE SAME AS SECONDARY CLARIFIER 4. REFER TO DWG SGAD-S003 FOR DETAILS AND INFORMATION, TYP

POUR WALL FOR FULL HEIGHT FROM BASE SLAB IN ONE POUR

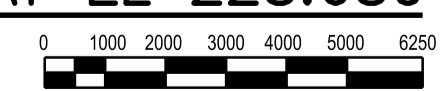
TOP OF 50mm CONCRETE TOPPING
 HPT EL 226.100
 TYP ALL AROUND

TOP OF 50mm CONCRETE TOPPING
 LPT EL 225.643
 TYP ALL AROUND

MECHANICAL ROOM

PUMP ROOM

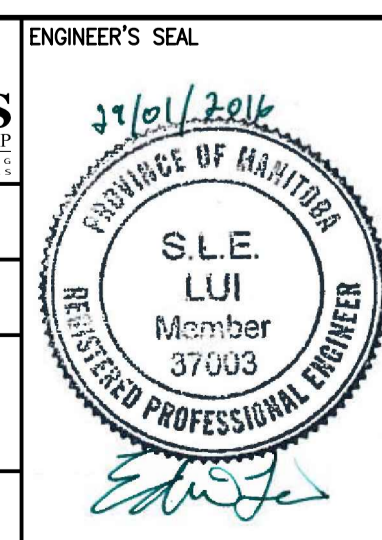
LOWER LEVEL PLAN AT EL 228.680
 1:125



APEGM
 Certificate of Authorization
 CH2M HILL Canada Ltd.
 No. 1441

NO.	REVISIONS	DATE	DESIGN	CHECK
00	ISSUED FOR TENDER - B.O. 899-2015	01/2016	G.O.	J.C.

CH2MHILL	
DESIGNED BY: A. THAKKAR	CHECKED BY: E. LUI
DRAWN BY: G. OMORI	APPROVED BY: H.T. FREIHAMMER
SCALE: 1:125	ISSUED FOR CONSTRUCTION BY: T. TURZAK
DATE: 2016/01/29	DATE: 2016/01/29
CONSULTANT NO.: 474248	



THE CITY OF WINNIPEG
 WATER AND WASTE DEPARTMENT

SOUTH END WATER POLLUTION CONTROL CENTRE
 SEWPCC UPGRADING/EXPANSION PROJECT
 STRUCTURAL
 SECONDARY CLARIFIER 5
 LOWER LEVEL PLAN AT EL 228.680

CITY DRAWING NUMBER 1-0102-SGAD-S002	SHEET 001	REV. 00	SIZE A1
---	--------------	------------	------------

