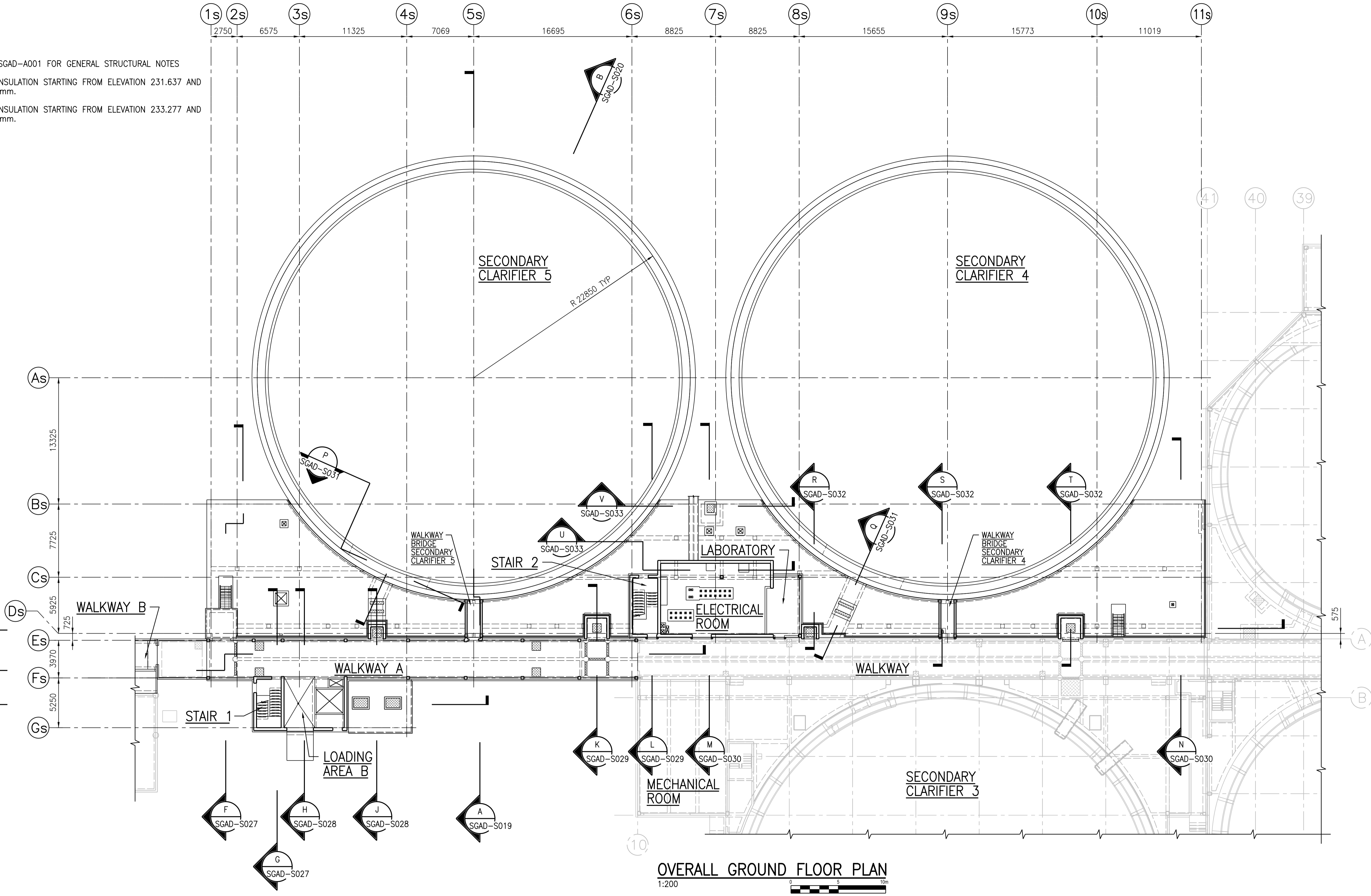
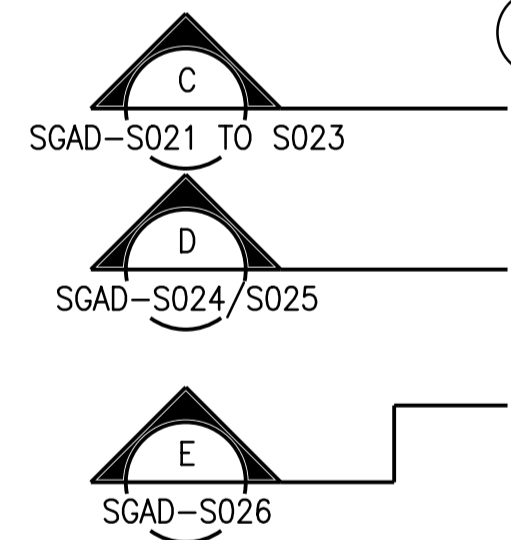


NOTES:

1. REFER TO DRAWING SGAD-A001 FOR GENERAL STRUCTURAL NOTES
2. INSTALL PERIMETER INSULATION STARTING FROM ELEVATION 231.637 AND CARRIED DOWN 2200mm.
3. INSTALL PERIMETER INSULATION STARTING FROM ELEVATION 233.277 AND CARRIED DOWN 2900mm.



OVERALL GROUND FLOOR PLAN
1:200

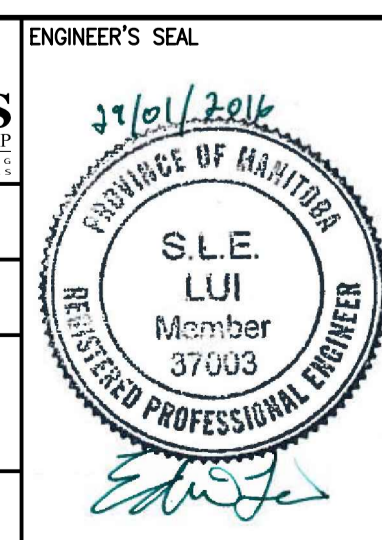


KEY PLAN

APEGM
Certificate of Authorization
CH2M HILL Canada Ltd.
No. 1441

NO.	REVISIONS	DATE	DESIGN	CHECK
00	ISSUED FOR TENDER - B.O. 899-2015	01/2016	G.O.	J.C.

CH2MHILL	
SNC-LAVALIN	KGS GROUP
DESIGNED BY: A. THAKKAR	CHECKED BY: E. LUI
DRAWN BY: G. OMORI	APPROVED BY: H.T. FREIHAMMER
SCALE: 1:200	ISSUED FOR CONSTRUCTION BY: T. TURZAK
DATE: 2016/01/29	DATE: 2016/01/29
CONSULTANT NO.: 474248	



THE CITY OF WINNIPEG
Winnipeg WATER AND WASTE DEPARTMENT

SOUTH END WATER POLLUTION CONTROL CENTRE
SEWPPC UPGRADING/EXPANSION PROJECT
STRUCTURAL
SECONDARY CLARIFIERS 4 AND 5
OVERALL GROUND FLOOR PLAN

CITY DRAWING NUMBER: 1-0102-SGAD-S011 | SHEET: 001 | REV: 00 | SIZE: A1