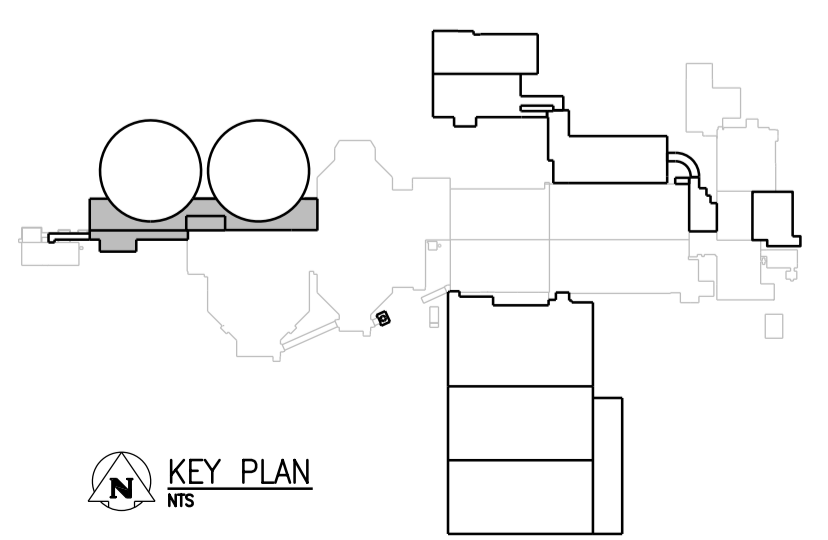
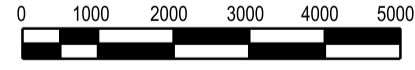


- NOTES**
- SEE CHANNEL LEVEL PLAN, DWG NO SGAD-S009 FOR MORE DETAILS AT THIS LEVEL.
 - DESIGN SUPERIMPOSED LOAD
 - a) SNOW LOAD = 5.0 KPa
 - b) EARTH LOAD = 6.0 KPa
 - c) LIVE LOAD / HANGER = 2.0 KPa
 - d) INSULATION LOAD = 0.25 KPa
 - THIS WALL ACT AS A BEAM, SEE SECTION FOR REINFORCEMENTS
 - FOR BEAM AND COLUMN SCHEDULE SEE DWG NO SSCH-S001.
 - 200mm WIDE CURB AROUND HVAC OPENING REINFORCE WITH 15M@200 EW CENTRED, TYP
 - ONE SIDED FORMWORK WILL BE NECESSARY FOR NEW WALL BESIDE EXISTING WALLS , TYP.
 - DESIGN SUPERIMPOSED LIVE LOAD = 15 kPa.
 - EXTRA TOP IS REQUIRED FOR ALL BEAMS , BM1 TO BM9. SEE SIMILAR TO SECTION N/SGAD-S030 FOR SIZE AND LOCATION.

GROUND FLOOR PLAN - PART A

1:100



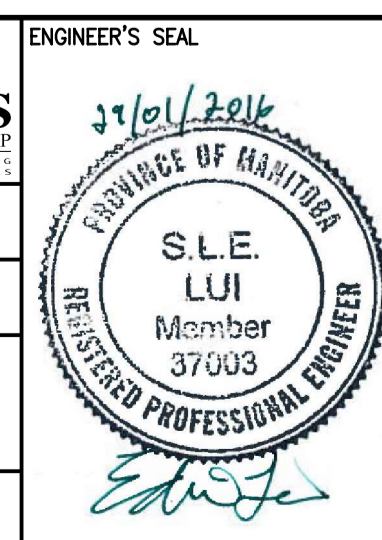
APEGM
Certificate of Authorization
CH2M HILL Canada Ltd.
No. 1441

00	ISSUED FOR TENDER - B.O. 899-2015	01/2016	G.O. J.C.
NO.	REVISIONS	DATE	DESIGN CHECK

CH2MHILL

SNC-LAVALIN

DESIGNED BY: A. THAKKAR	CHECKED BY: E. LUI
DRAWN BY: G. OMORI	APPROVED BY: H.T. FREIHAMMER
SCALE: 1:100	ISSUED FOR CONSTRUCTION BY: T. TURZAK
DATE: 2016/01/29	DATE: 2016/01/29
CONSULTANT NO.: 474248	



THE CITY OF WINNIPEG
Winnipeg
WATER AND WASTE DEPARTMENT

SOUTH END WATER POLLUTION CONTROL CENTRE
SEWPPC UPGRADING/EXPANSION PROJECT
STRUCTURAL
SECONDARY CLARIFIERS 4 AND 5
GROUND FLOOR PLAN - PART A

CITY DRAWING NUMBER: 1-0102-SGAD-S014
SHEET: 001
REV: 00
SIZE: A1