

NOTES:

1. THE EXISTING PILING AND CLARIFIER WALL IS DESIGNED FOR AN AXIAL LOAD OF 35500 KG. DOME SELF WEIGHT + 1.0 kPa LIVE LOAD ON DOME + 2.50 kPa SNOW LOAD ON DOME. THE WALL IS NOT DESIGNED FOR ANY FORCE PERPENDICULAR TO THE WALL.
2. ALL BACKFILLING AND WEeping TILE DETAILS ARE SIMILAR TO SHOWN ON SECTION B/SGAD-S020, TYP
3. 300mm THICK GEOFOAM ON TOP OF SLAB WITH MAXIMUM 300mm EARTH COVER ON TOP OF GEOFOAM. TYPICAL OVER ENTIRE ROOF SLAB UNLESS NOTED OTHERWISE. PROVIDE 60 MIL PVC SHEET ON TOP OF GEOFOAM OVER ENTIRE FOOTPRINT. TAPE ALL SEAMS. EXTEND UP AND DOWN FROM WALL/SLAB/CURB INTERSECTIONS 1300mm ALL AROUND.
4. WHERE THE EXCAVATION LINE IS LOCATED BELOW THE UNDERSIDE OF THE VOID FORM, FILL THE AREA WITH CLASS A BACKFILL COMPACTED TO 98% SPMDD.

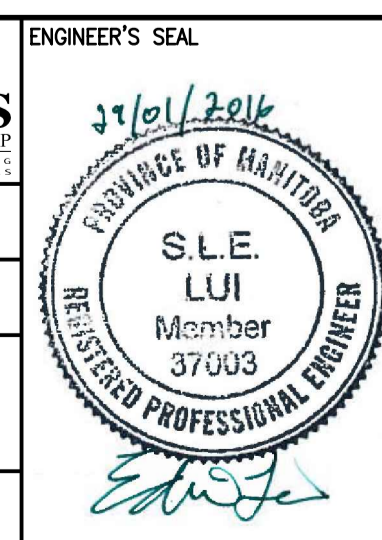
A SECTION
1:50

- SGAD-S001, SGAD-S002, SGAD-S003, SGAD-S004, SGAD-S006, SGAD-S007, SGAD-S008, SGAD-S009, SGAD-S011, SGAD-S012, SGAD-S013, SGAD-S014, SGAD-S016, SGAD-S017



00	ISSUED FOR TENDER - B.O. 899-2015	01/2016	G.O. J.C.
NO.	REVISIONS	DATE	DESIGN CHECK

CH2MHILL		KCS GROUP	
SNC-LAVALIN			
DESIGNED BY: A. THAKKAR	CHECKED BY: E. LUI	ISSUED FOR CONSTRUCTION	
DRAWN BY: G. OMORI	APPROVED BY: H.T. FREIHAMMER	BY: T. TURZAK	
SCALE: 1:50	DATE: 2016/01/29	DATE: 2016/01/29	
CONSULTANT NO.: 474248			



THE CITY OF WINNIPEG
Winnipeg WATER AND WASTE DEPARTMENT

SOUTH END WATER POLLUTION CONTROL CENTRE
SEWPCC UPGRADING/EXPANSION PROJECT
STRUCTURAL
SECONDARY CLARIFIERS 4 AND 5
SECTION A

CITY DRAWING NUMBER: 1-0102-SGAD-S019
SHEET: 001
REV: 00
SIZE: A1