

**GENERAL NOTES:**

- FOR CONCRETE FINISHES SEE SPECIFICATIONS
- SEE DETAILS (0315-803), (0330-004) & (0330-812)  
TYPICAL FOR ALL WALLS BELOW GRADE AND ALL LIQUID RETAINING WALLS.
- 1000mm MIN TYPE 2 CRUSHED STONE COMPACTED TO 98% SPMD IN MAXIMUM LIFTS OF 300mm AGAINST WALL.
- BACKFILL THE AREA WITH SELECT ONSITE FILL COMPACTED TO 98% SPMD IN MAXIMUM LIFTS OF 300mm.
- 300mm THICK GEOFOAM ON TOP OF SLAB WITH MAXIMUM 300mm EARTH COVER ON TOP OF GEOFOAM. TYPICAL OVER ENTIRE ROOF SLAB UNLESS NOTED OTHERWISE. PROVIDE 60 MIL PVC SHEET ON TOP OF GEOFOAM OVER ENTIRE FOOTPRINT. TAPE ALL SEAMS. EXTEND UP AND DOWN FROM WALL/SLAB/CURB INTERSECTIONS 1300mm ALL AROUND.
- PROVIDE WEeping TILE SYSTEM ALL AROUND. SEE DWG CGAD-S001 FOR LAYOUT AND DETAILS.
- WHERE THE EXCAVATION LINE IS LOCATED BELOW THE UNDERSIDE OF THE VOID FORM, FILL THE AREA WITH CLASS A BACKFILL COMPACTED TO 98% SPMD.

**F SECTION**  
1:50

SGAD-S001, SGAD-S004, SGAD-S006, SGAD-S009, SGAD-S011, SGAD-S014, SGAD-S016, SGAD-S017

**G SECTION**  
1:50

SGAD-S001, SGAD-S004, SGAD-S006, SGAD-S009, SGAD-S011, SGAD-S014, SGAD-S016, SGAD-S017



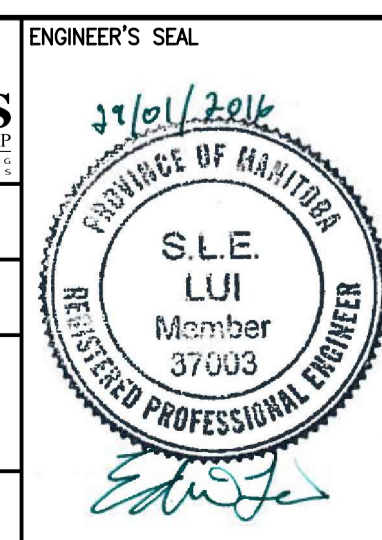
00	ISSUED FOR TENDER - B.O. 899-2015	01/2016	G.O. J.C.
NO.	REVISIONS	DATE	DESIGN CHECK

**CH2MHILL**  
SNC-LAVALIN

DESIGNED BY: A. THAKKAR  
DRAWN BY: G. OMORI  
SCALE: 1:50  
DATE: 2016/01/29

CHECKED BY: E. LUI  
APPROVED BY: H.T. FREIHAMMER  
ISSUED FOR CONSTRUCTION BY: T. TURZAK  
DATE: 2016/01/29

CONSULTANT NO.: 474248



**THE CITY OF WINNIPEG**  
Winnipeg WATER AND WASTE DEPARTMENT

SOUTH END WATER POLLUTION CONTROL CENTRE  
SEWPCC UPGRADING/EXPANSION PROJECT  
STRUCTURAL  
SECONDARY CLARIFIERS 4 AND 5  
SECTIONS F AND G

CITY DRAWING NUMBER: 1-0102-SGAD-S027  
SHEET: 001  
REV: 00  
SIZE: A1