

SECONDARY CLARIFIER No.2

SECONDARY CLARIFIER No.3

PLAN AT EL. 226.466

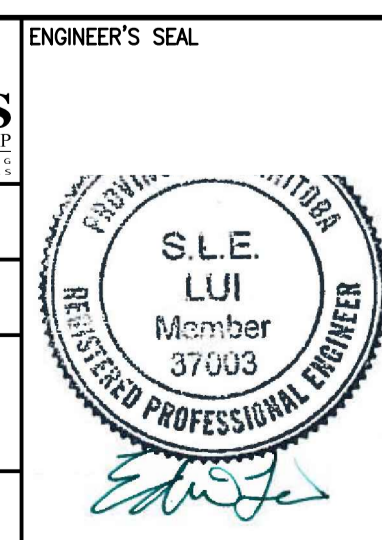
NTS  
 DESIGN LIVE LOAD:  
 GENERAL AREA = 12.0 kPa  
 TANK FLOOR = 60.0 kPa  
 NOTE:  
 W1 DENOTES WALL MARK, C101 DENOTES COLUMN MARK.  
 FOR SCHEDULE REFER TO DWG. S13

- NOTES:
1. FOR NEW CONSTRUCTION SEE DRAWING 1-0102-DGAD-S002.
  2. REFER TO GENERAL DEMOLITION NOTES DRAWING 4-0102-DGAD-A001.



00	ISSUED FOR TENDER - B.O. 899-2015	01/2016	G.G. J.C.
NO.	REVISIONS	DATE	DESIGN CHECK

**CH2MHILL.**  
 SNC-LAVALIN  
 DESIGNED BY: E. LUI  
 CHECKED BY: R. PARIKH  
 DRAWN BY: G.GERMAN  
 APPROVED BY: H.T. FREIHAMMER  
 SCALE: NTS  
 ISSUED FOR CONSTRUCTION BY: T. TURZAK  
 DATE: 2014/01/17  
 DATE: 2016/01/29  
 CONSULTANT NO.: 474248



SEALING ARCHITECT OR ENGINEER ACCEPTS RESPONSIBILITY ONLY FOR AREAS IDENTIFIED BY CLOUDING ON THIS DRAWING.

NOTE: THIS DRAWING SUPERSEDES DRAWING SEP-408

**THE CITY OF WINNIPEG**  
 WATER AND WASTE DEPARTMENT

SOUTH END WATER POLLUTION CONTROL CENTRE  
 SEWPCC UPGRADING/EXPANSION PROJECT  
 STRUCTURAL  
 SECONDARY CLARIFIERS - CONCRETE AND CMU REMOVALS  
 PLANS (1)

CITY DRAWING NUMBER: 1-0102-SGAD-S050  
 SHEET: 001  
 REV: 00  
 SIZE: A1

