

- NOTES:
- FOR NEW CONSTRUCTION SEE DRAWING 1-0102-DGAD-S002.
 - REFER TO GENERAL DEMOLITION NOTES DRAWING 4-0102-DGAD-A001.

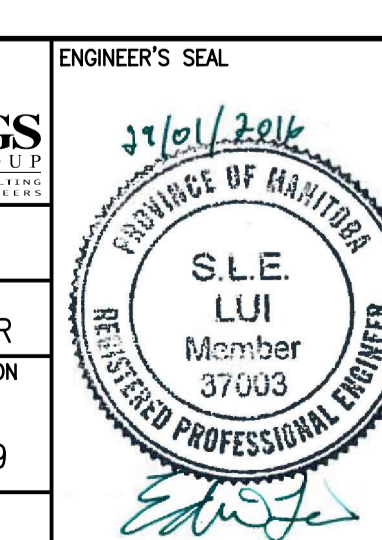


NO.	REVISIONS	DATE	DESIGN	CHECK
00	ISSUED FOR TENDER - B.O. 899-2015	01/2016	G.G. J.C.	

CH2MHILL

SNC-LAVALIN

DESIGNED BY: E. LUI
 CHECKED BY: R. PARIKH
 DRAWN BY: G. GERMAN
 APPROVED BY: H.T. FREIHAMMER
 SCALE: NTS
 ISSUED FOR CONSTRUCTION BY: T. TURZAK
 DATE: 2014/01/17
 DATE: 2016/01/29
 CONSULTANT NO.: 474248



SEALING ARCHITECT OR ENGINEER ACCEPTS RESPONSIBILITY ONLY FOR AREAS IDENTIFIED BY CLOUDING ON THIS DRAWING.

NOTE: THIS DRAWING SUPERSEDES DRAWING SEP-411

THE CITY OF WINNIPEG
 WATER AND WASTE DEPARTMENT

SOUTH END WATER POLLUTION CONTROL CENTRE
 SEWPPC UPGRADING/EXPANSION PROJECT
 STRUCTURAL
 SECONDARY CLARIFIERS - CONCRETE AND CMU REMOVALS PLANS (3)

CITY DRAWING NUMBER: 1-0102-SGAD-S052
 SHEET: 001
 REV: 00
 SIZE: A1

