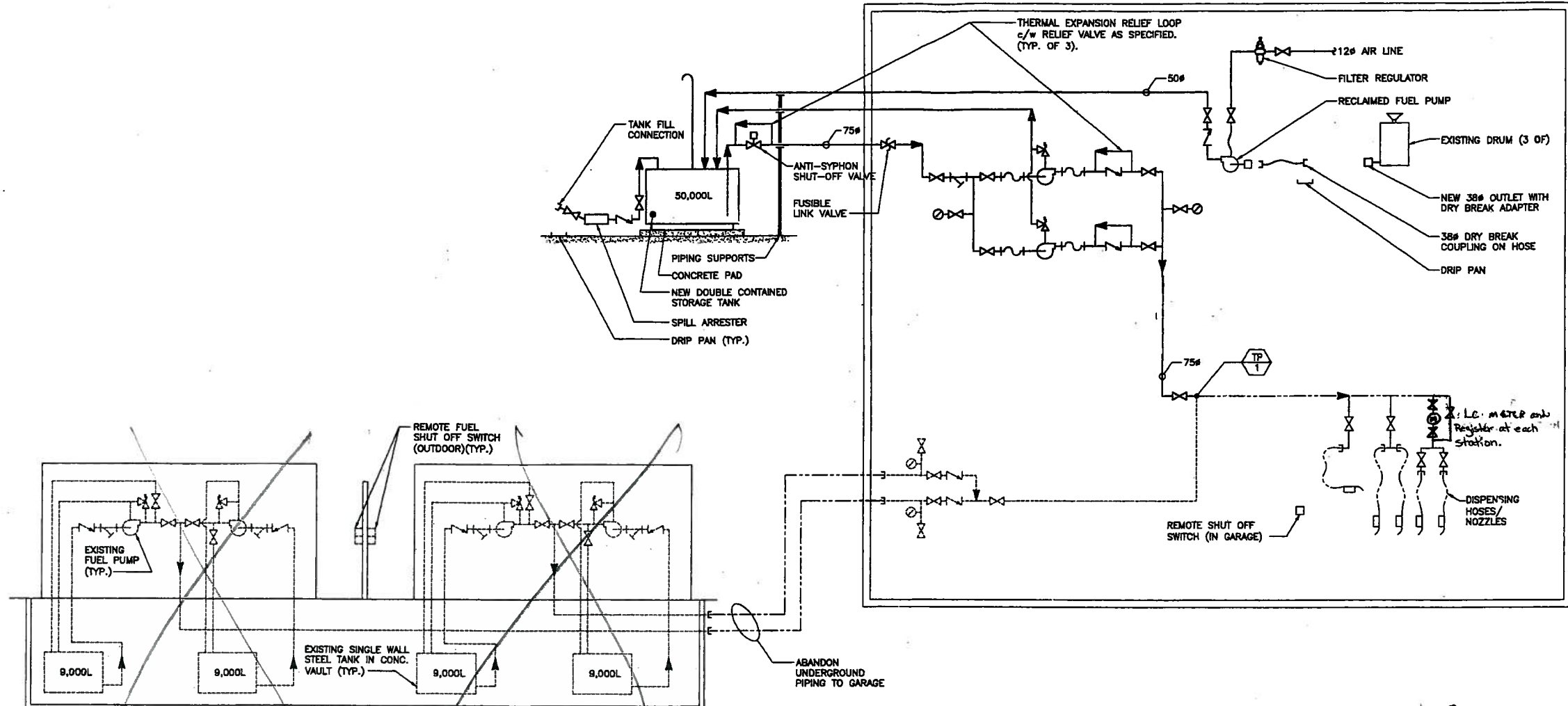
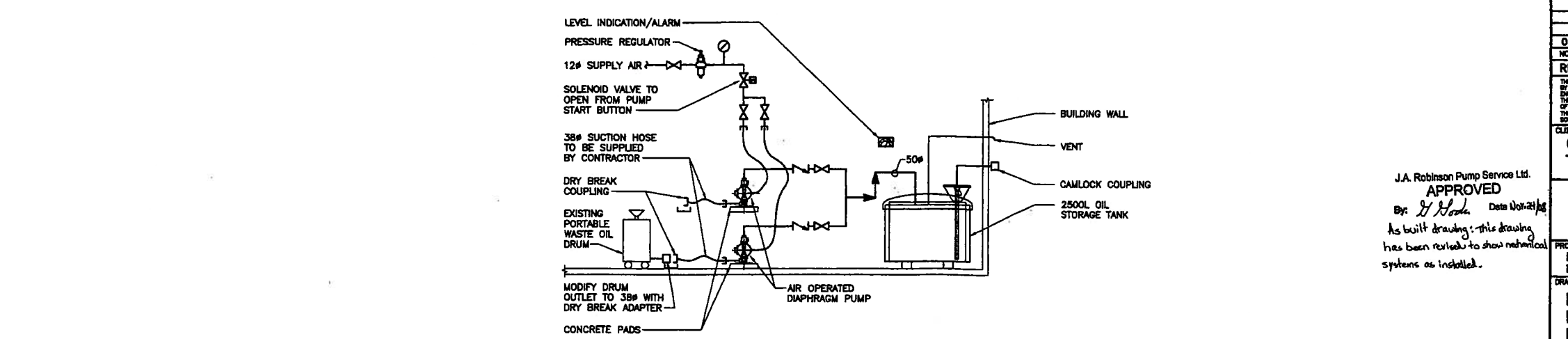


**LEGEND:**

- NEW
- - - EXISTING TO REMAIN
- EXISTING TO BE REMOVED
- ☒ CHECK VALVE
- ☒ EMERGENCY SHUTOFF VALVE
- ☒ FUSIBLE LINK VALVE
- ☒ PRESSURE RELIEF VALVE
- ☒ STRAINER
- ☒ VALVE (NORMALLY CLOSED)
- ☒ VALVE (NORMALLY OPEN)
- ☒ SOLENOID VALVE
- ☒ PRESSURE GAUGE
- ☒ METER
- ☒ PUMP
- ☒ FLOW DIRECTION
- ☒ HOSE CONNECTION
- ☒ CAP
- ☒ REDUCER
- ☒ FLEXIBLE CONNECTION
- ☒ TIE-IN POINT



**1 DIESEL FUEL SYSTEM**  
N.T.S.



**2 WASTE OIL SYSTEM**  
N.T.S.

J.A. Robinson Pump Service Ltd.  
**APPROVED**  
By: *J. Robinson* Date: 04/21/05  
As built drawing - this drawing has been revised to show mechanical systems as installed.



0 ISSUED FOR TENDER			07.04.05	LWS
NO.	DESCRIPTION	DATE	ISSUED BY	
<b>REVISIONS/ISSUE</b>				
<small>THE CONTENT OF THIS DOCUMENT IS NOT INTENDED FOR THE USE OF, NOR IS IT INTENDED TO BE RELIED UPON BY ANY PERSON, FIRM OR CORPORATION OTHER THAN THE CLIENT AND WARDROP ENGINEERING INC. WARDROP ENGINEERING INC. ACCEPTS NO LIABILITY WHATSOEVER TO THIRD PARTIES FOR DAMAGES OR INJURY SUFFERED BY SUCH THIRD PARTY ARISING FROM USE OF THIS DOCUMENT BY THEM, WITHOUT THE EXPRESS WRITTEN AUTHORITY OF WARDROP ENGINEERING INC. THIS DOCUMENT IS SUBJECT TO FEDERAL RESTRICTIONS IMPOSED BY THE CONTRACT BETWEEN THE CLIENT AND WARDROP ENGINEERING INC. AND THESE PARTIES' PERMISSION MUST BE OBTAINED BEFORE THIS DOCUMENT IS USED IN ANY OTHER CIRCUMSTANCES.</small>				
CLIENT				
CITY OF WINNIPEG TRANSIT DEPARTMENT				
<b>WARDROP   Engineering Inc.</b>				
PROJECT NAME PETROLEUM STORAGE AND HANDLING SYSTEMS REPLACEMENT				
DRAWING DESCRIPTION MAIN STREET FACILITY MECHANICAL - FLOW SCHEMATICS				
DESIGNED BY:	DRAWN BY:	CHECKED BY:		
L.S.	D.D.			
APPROVED BY:				
SCALE:	AS NOTED	DATE:	07.01.15	
DRAWING NO.	0729720100-DWG-M0001			REV. 0