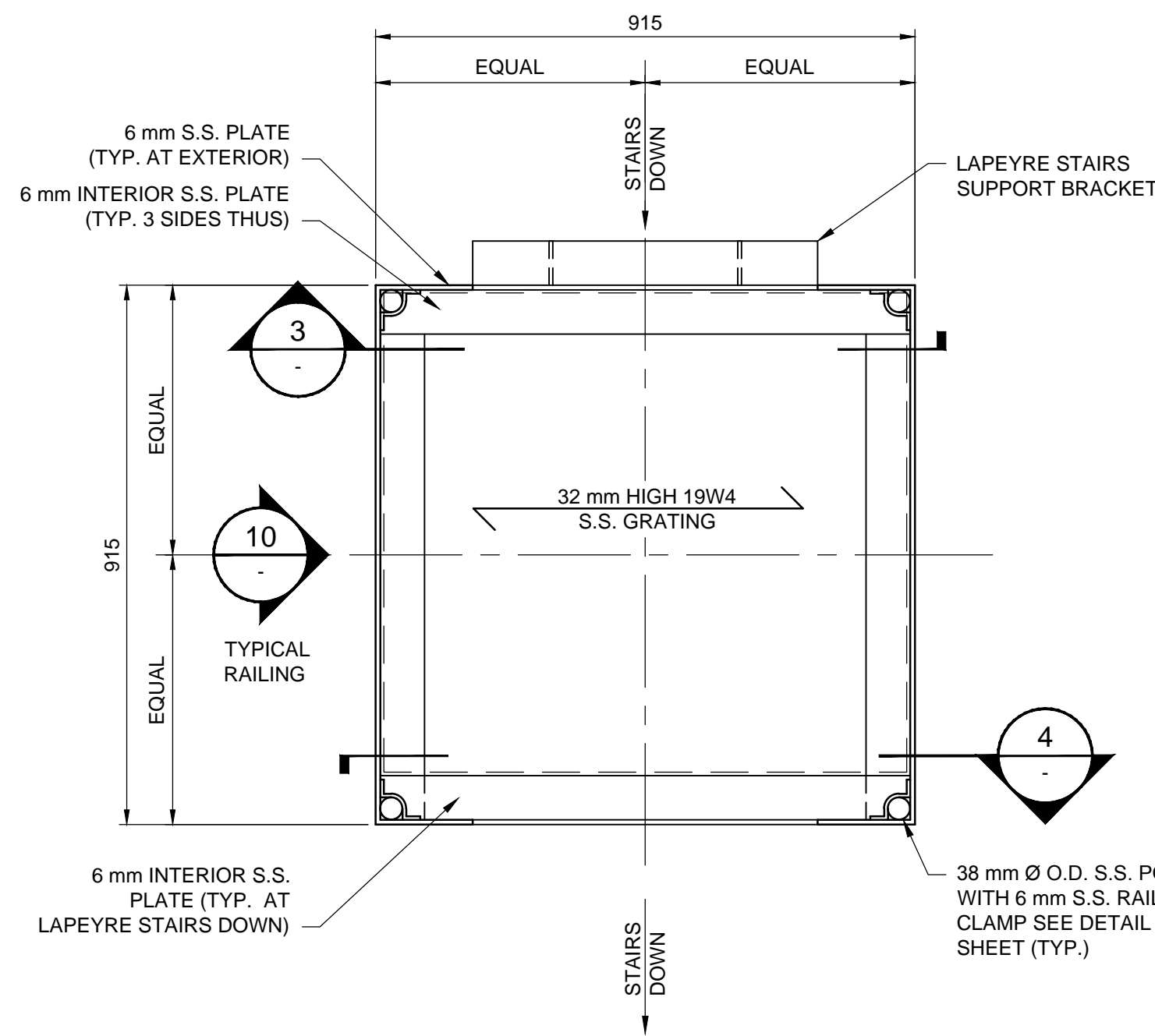
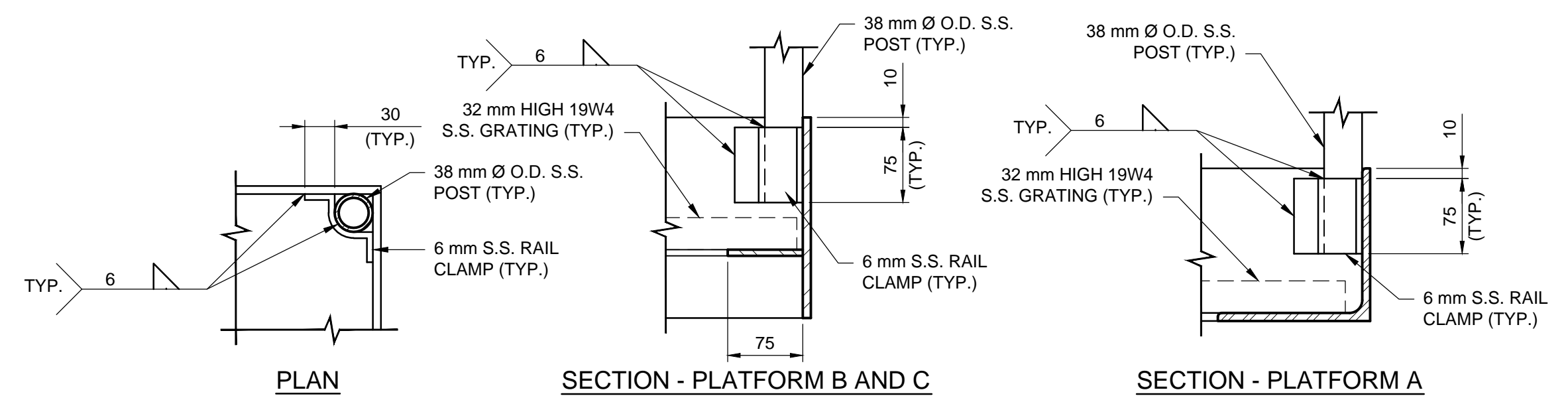


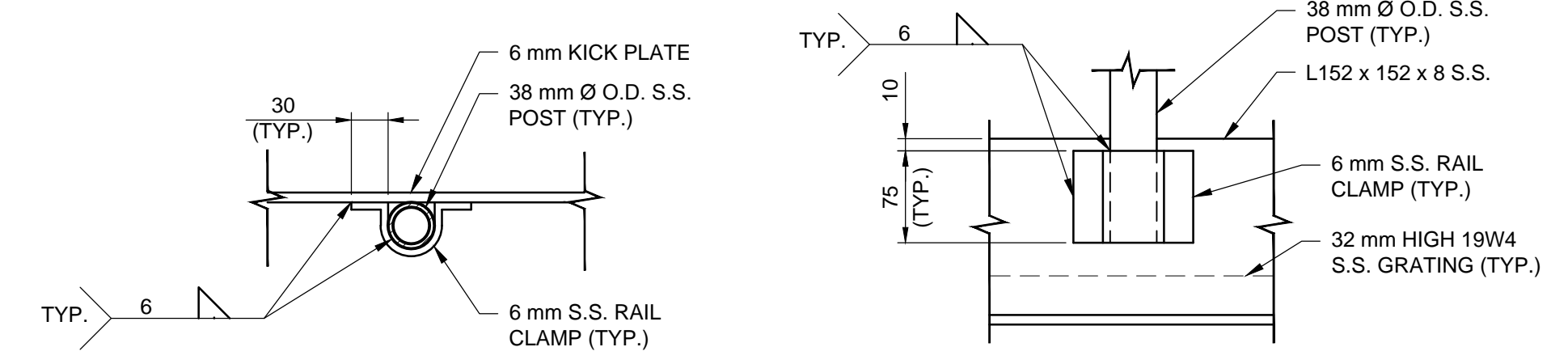
1 PLAN 1:10
TYPICAL PLATFORM B



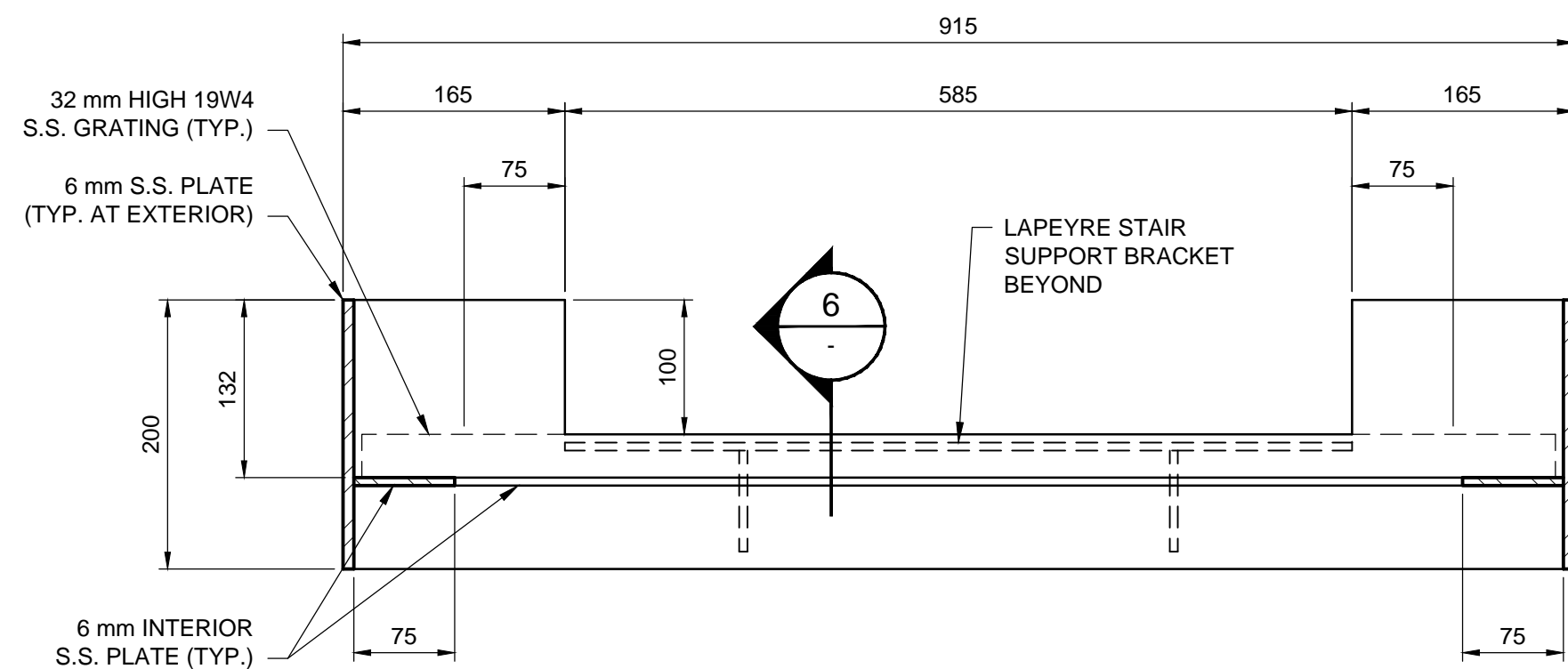
2 PLAN 1:10
TYPICAL PLATFORM C



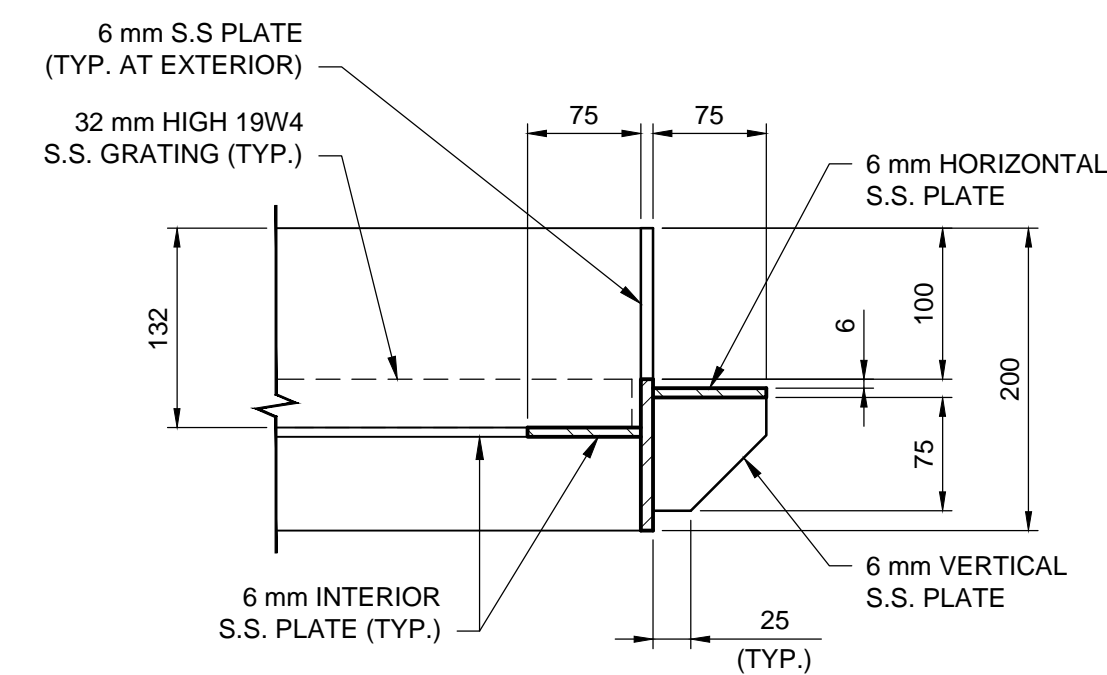
8 DETAIL 1:5
TYPICAL CORNER CONNECTION



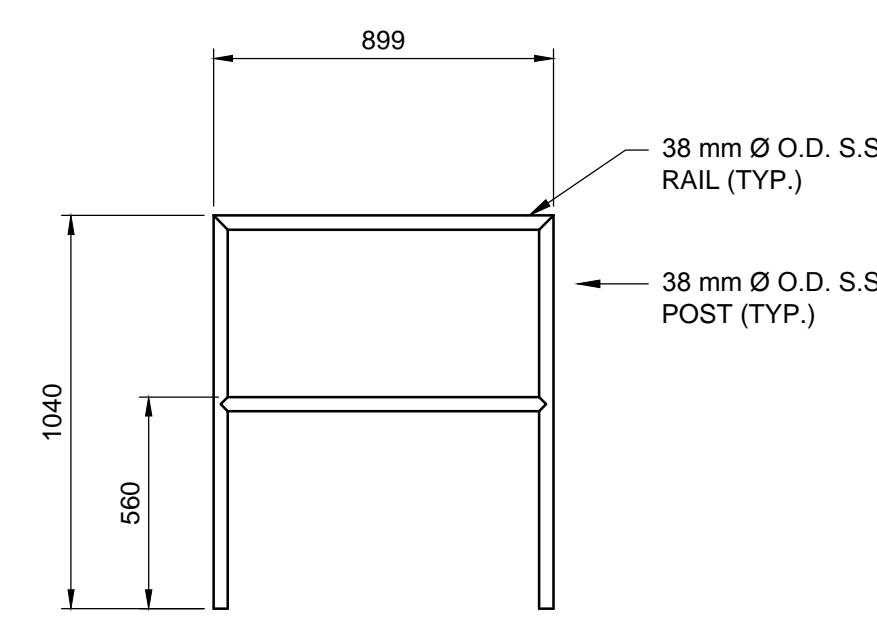
9 DETAIL 1:5
TYPICAL MID-RAIL CONNECTION



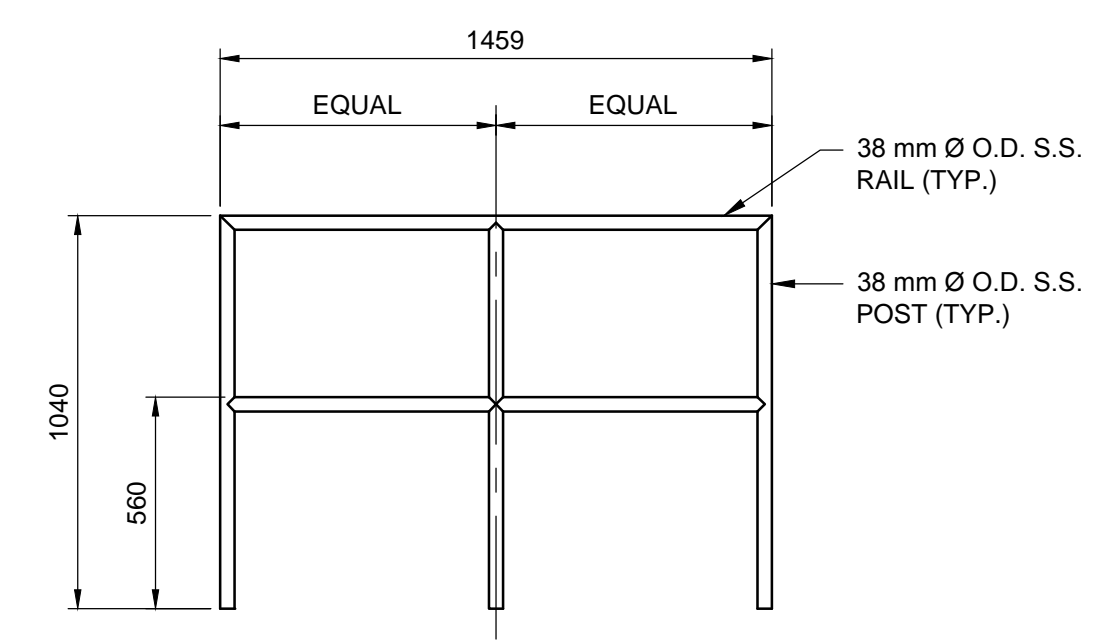
3 SECTION 1:5



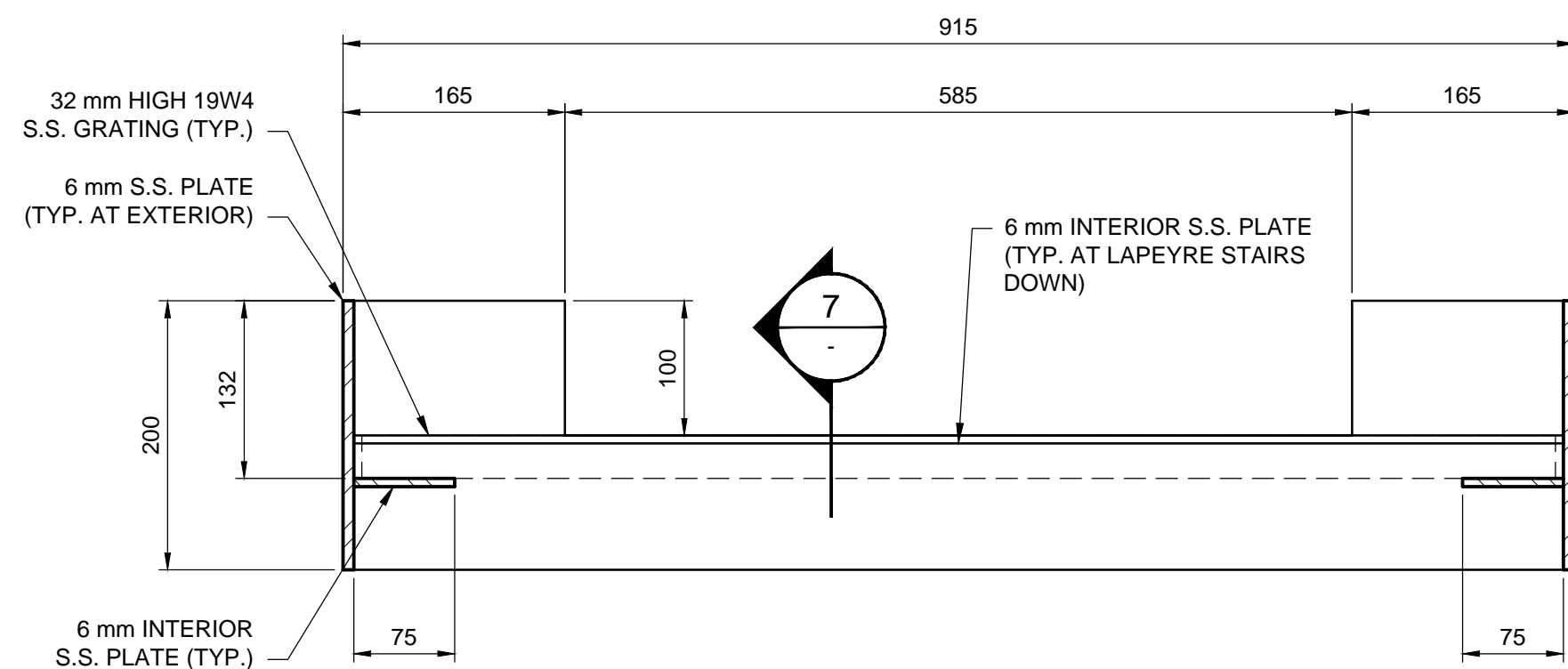
6 SECTION 1:5
LAPEYRE STAIR SUPPORT BRACKET



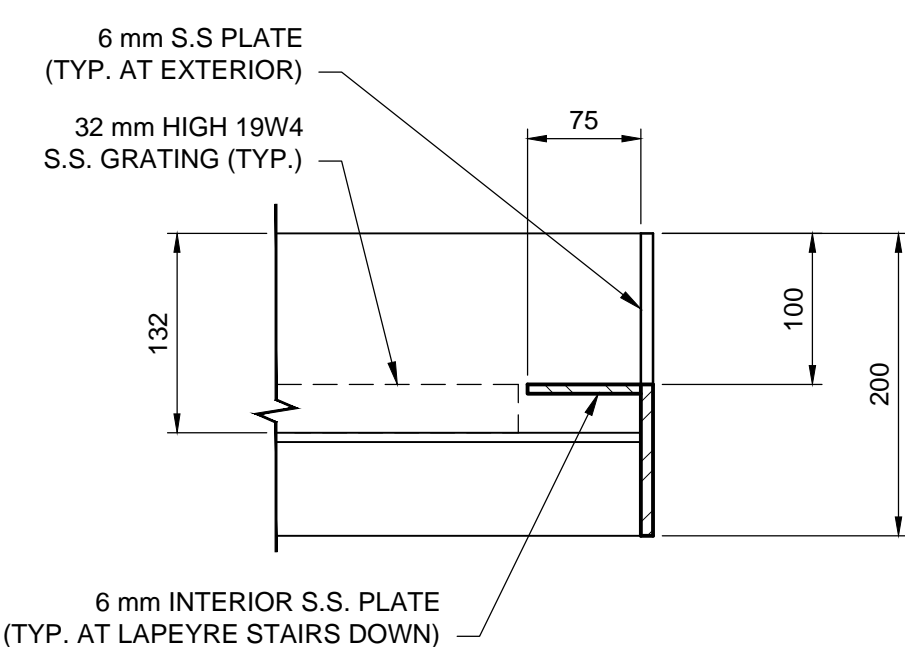
10 ELEVATION 1:20
TYPICAL RAILING PLATFORM B AND C



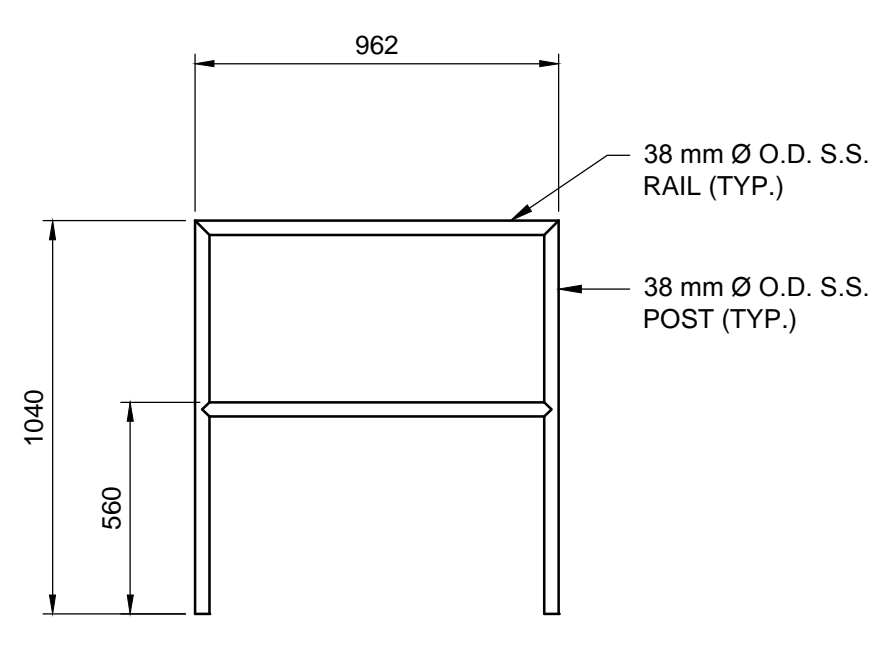
11 ELEVATION 1:20
TYPICAL RAILING PLATFORM A



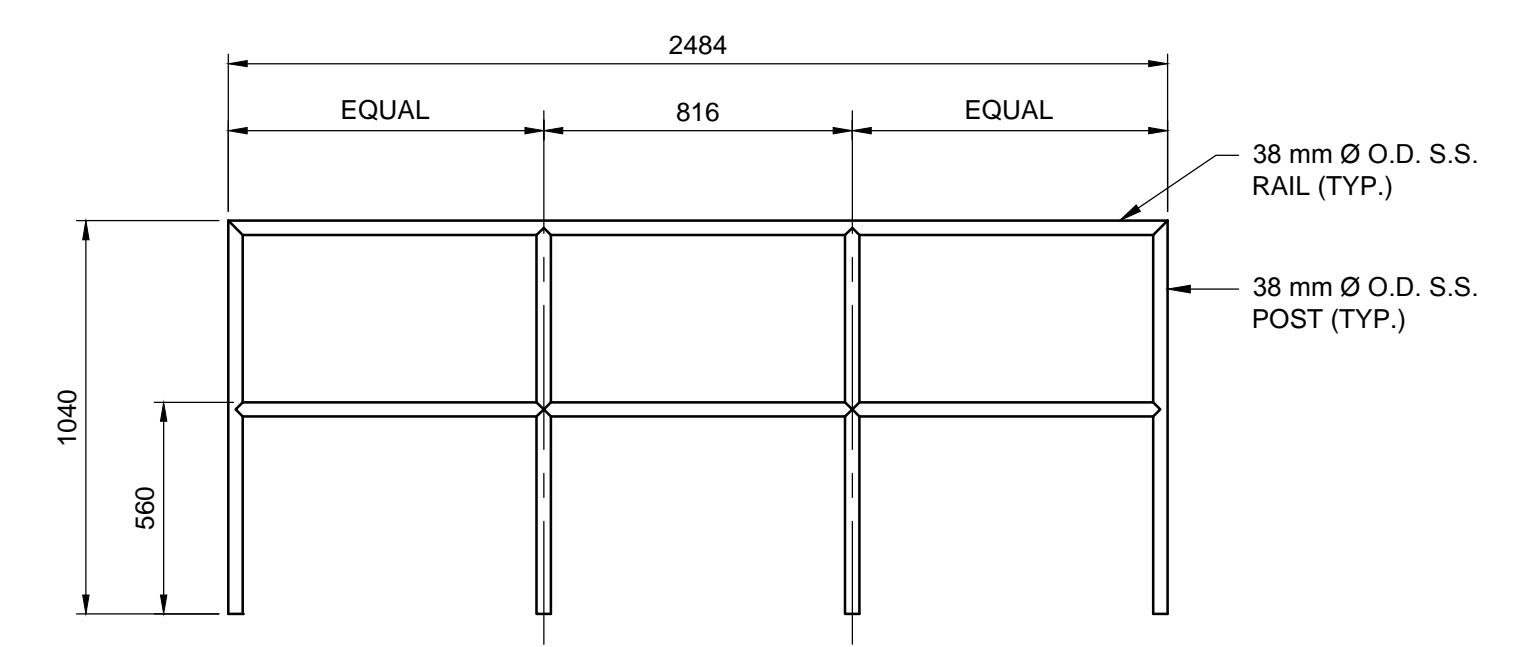
4 SECTION 1:5



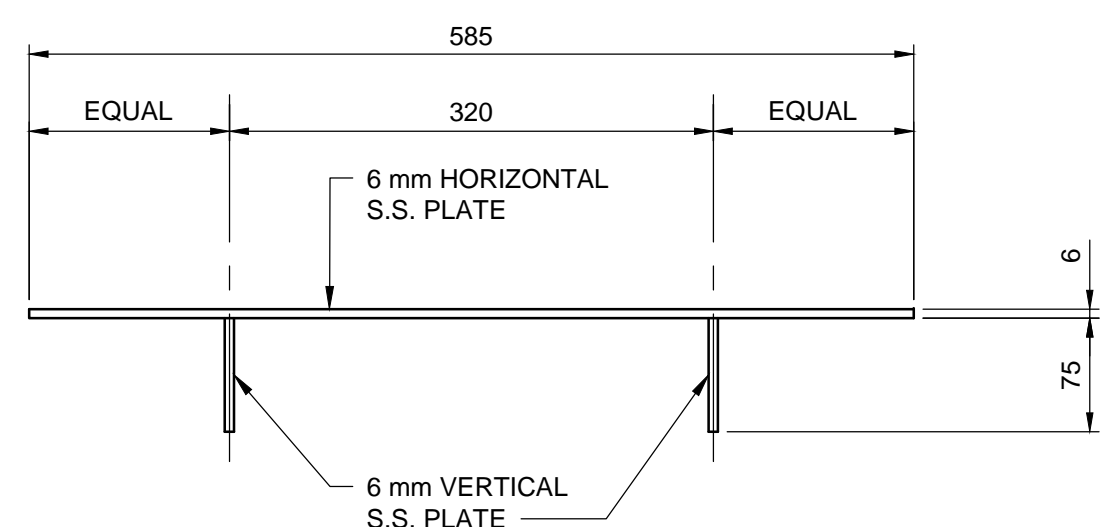
7 SECTION 1:5



12 ELEVATION 1:20
TYPICAL RAILING PLATFORM A



13 ELEVATION 1:20
TYPICAL RAILING PLATFORM A



5 SECTION 1:5
LAPEYRE STAIR SUPPORT BRACKET

- NOTES:
- ALL CORNER AND T JOINTS TO BE 100% BUTT WELDS (TYPICAL UNLESS NOTED OTHERWISE)
 - ALL MISCELLANEOUS METAL TO BE STAINLESS STEEL GRADE 316L UNLESS NOTED OTHERWISE.
 - ALL CONNECTIONS TO BE 16M A325 STAINLESS STEEL BOLTS WITH WASHERS E.F. UNLESS NOTED OTHERWISE.

METRIC
WHOLE NUMBERS INDICATE MILLIMETRES
DECIMALIZED NUMBERS INDICATE METRES

APEGM
Certificate of Authorization
Dillon Consulting Limited (MB)
No. 1789 Date: 2015-11-20

LOCATION APPROVED UNDERGROUND STRUCTURES N/A		B.M. ELEV.	CHECKED BY DRA		ENGINEER'S SEAL		THE CITY OF WINNIPEG WATER AND WASTE DEPARTMENT ENGINEERING DIVISION	
SUPV. U/G STRUCTURES COMMITTEE DATE		CONSTRUCTION COMPLETION DATE:	APPROVED BY SSR		DESIGNED BY FAK		RELEASED FOR CONSTRUCTION	CONSULTANT DRAWING NUMBER 14-1411-S-111
NOTE: LOCATION OF UNDERGROUND STRUCTURES AS SHOWN ARE BASED ON THE BEST INFORMATION AVAILABLE BUT NO GUARANTEE IS GIVEN THAT ALL EXISTING UTILITIES ARE SHOWN OR THAT THE GIVEN LOCATIONS ARE EXACT. CONFIRMATION OF EXISTENCE AND EXACT LOCATION OF ALL SERVICES MUST BE OBTAINED FROM THE INDIVIDUAL UTILITIES BEFORE PROCEEDING WITH CONSTRUCTION.		NO.	ISSUED FOR TENDER 2015 11 20	SSR	DATE 2015 11 20	DATE	BID OPPORTUNITY: 930-2015	FILE PATH: P:\20154593\00_Kemp_Wilkes\Working_Dwgs\300_Structural\