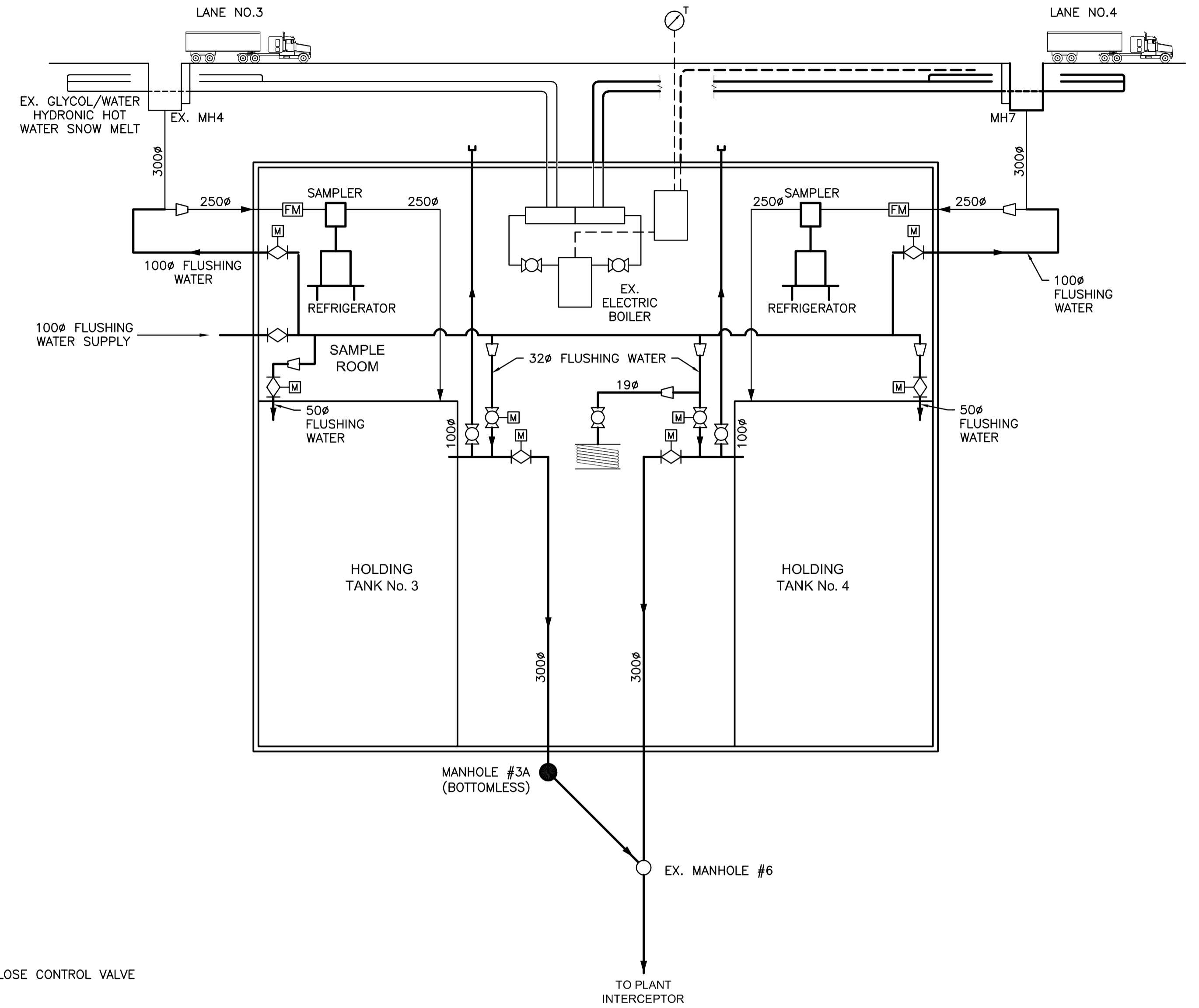


HAULED WASTEWATER BUILDING NO. 1
(FORMERLY HAULED WASTEWATER BUILDING)



HAULED WASTEWATER BUILDING NO. 2
(FORMERLY LEACHATE RECEIVING BUILDING)

LEGEND

- BALL VALVE
- ELECTRIC OPEN/CLOSE CONTROL VALVE
- FLOW METER
- TEMPERATURE GAUGE
- REDUCER
- PLUG VALVE

NOTES:

1. PROVIDE NEW AUTOMATIC SAMPLERS FOR HOLDING TANK NOS. 2, 3 & 4
2. PROPOSED WORK INDICATED IN BOLD

WARNING

IF POWER EQUIPMENT OR EXPLOSIVES ARE TO BE USED FOR EXCAVATION ON THIS PROJECT THE CONTRACTOR MUST:
 1) NOTIFY THE GAS COMPANY OF THE PROPOSED LOCATION OF EXCAVATION.
 2) TAKE PRECAUTION TO AVOID DAMAGE TO GAS COMPANY INSTALLATIONS.
 SEE PROVINCIAL REGULATION 140/92 FOR DETAILS

METRIC

WHOLE NUMBERS INDICATE MILLIMETRES
 DECIMALIZED NUMBERS INDICATE METRES

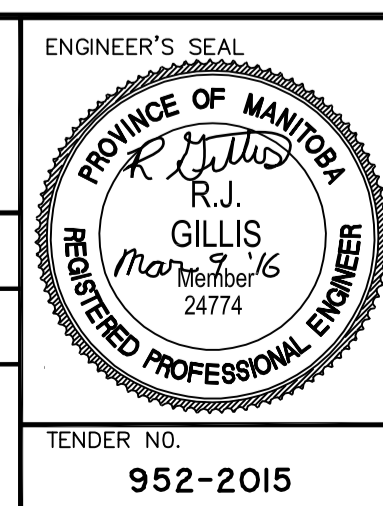
LOCATION APPROVED UNDERGROUND STRUCTURES		B.M. ELEV.
SUPV. U/G STRUCTURES COMMITTEE	DATE	
NOTE: LOCATION OF UNDERGROUND STRUCTURES AS SHOWN ARE BASED ON THE BEST INFORMATION AVAILABLE BUT NO GUARANTEE IS GIVEN THAT ALL EXISTING UTILITIES ARE SHOWN OR THAT THE GIVEN LOCATIONS ARE EXACT. CONFIRMATION OF EXISTENCE AND EXACT LOCATION OF ALL SERVICES MUST BE OBTAINED FROM THE INDIVIDUAL UTILITIES BEFORE PROCEEDING WITH CONSTRUCTION.		
NO.	REVISIONS	DATE BY

DESIGNED BY	R.G.	CHECKED BY	S.A.B.
DRAWN BY	K.R.	APPROVED BY	S.K.B.
HOR. SCALE:	AS NOTED	RELEASED FOR CONSTRUCTION:	
VERTICAL:		DATE	2016.01.05

Stantec
 500-311 Portage Ave, Winnipeg MB Canada
 www.stantec.com

DESIGNED BY: R.G. | CHECKED BY: S.A.B.
 DRAWN BY: K.R. | APPROVED BY: S.K.B.

HOR. SCALE: AS NOTED | RELEASED FOR CONSTRUCTION: []
 VERTICAL: [] | DATE: 2016.01.05



THE CITY OF WINNIPEG
 WATER AND WASTE DEPARTMENT

Winnipeg

NORTH END SEWAGE TREATMENT PLANT (NEWPC)
 HAULED LIQUID WASTE FACILITY PHASE II UPGRADE

HAULED WASTEWATER BUILDING I AND 2
 PROPOSED PROCESS FLOW SCHEMATIC

TENDER NO. **952-2015** | CITY DRAWING NUMBER **I-OIOIY-P0001-001** | SHEET **1** OF **8**



V:\1112\active\111216000\0300_drawing\0302_sheet_files\06_process\1-0101Y-P0001-001.dwg
 2016/02/08 6:40 PM By: Schiefel, Omelle