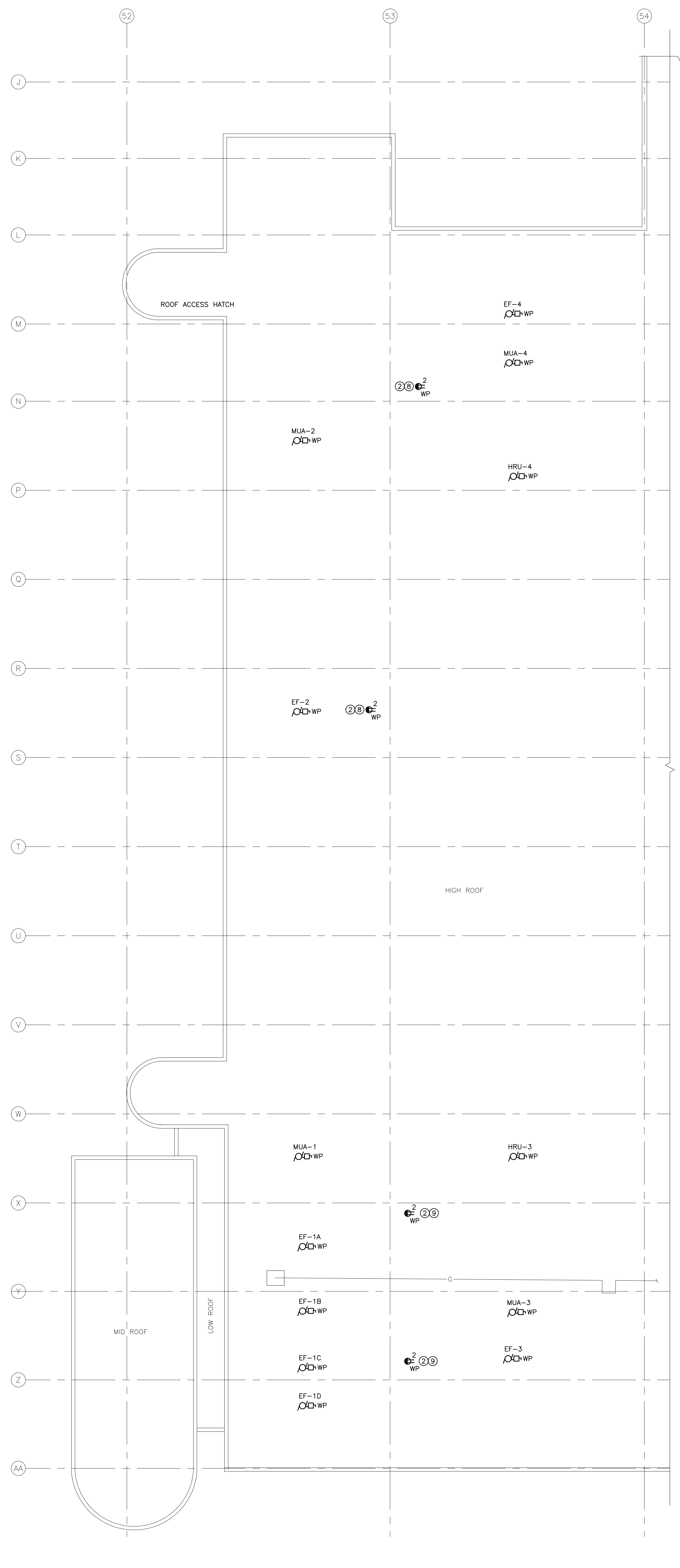


1 MAIN FLOOR PLAN - NEW CONSTRUCTION - ELECTRICAL
 SCALE: 1/16" = 1'-0"



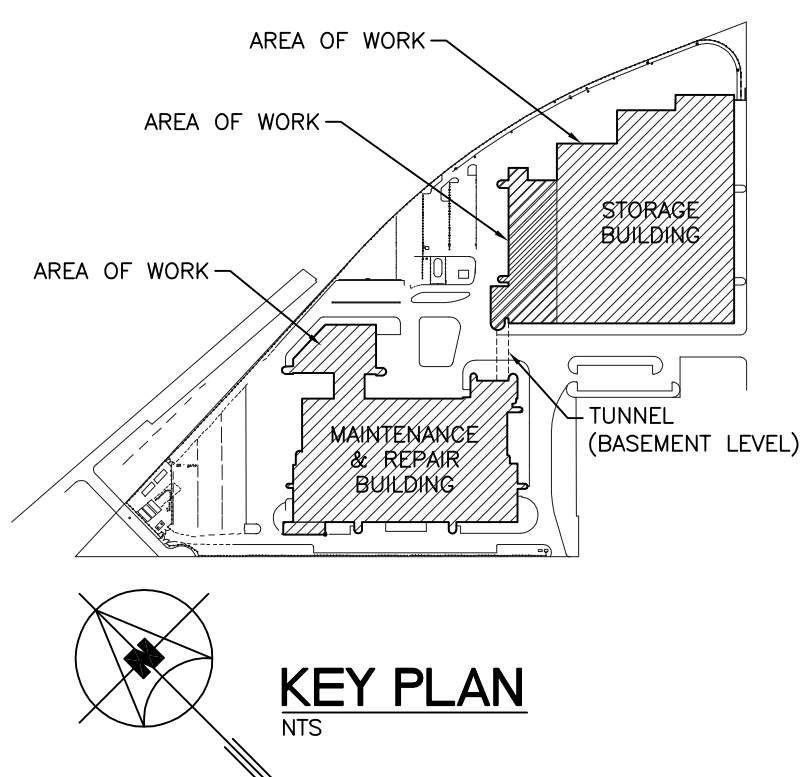
2 ROOF PLAN - NEW CONSTRUCTION - ELECTRICAL
 SCALE: 1/16" = 1'-0"

GENERAL NOTES

- A. ELECTRICAL SUB-CONTRACTOR SHALL BE RESPONSIBLE FOR COORDINATING EXACT LAYOUT, ROUTING, ETC. VERIFY EXISTING SERVICES ON SITE.
- B. ELECTRICAL SUB-CONTRACTOR SHALL ENSURE COORDINATION BETWEEN ALL TRADES AND CONSULTANT, ON AND OFF SITE, AS REQUIRED FOR INSTALLATION OF ELECTRICAL EQUIPMENT.
- C. PROVIDE LIQUID TIGHT CONNECTORS ON ALL OUTDOOR CONDUITS.
- D. FINAL CONNECTIONS TO EQUIPMENT AND INTER-CONNECTIONS BETWEEN EQUIPMENT WHERE NECESSARY ARE TO BE MADE BY ELECTRICAL SUB-CONTRACTOR.
- E. CONFIRM ALL EQUIPMENT CONNECTIONS AND ELECTRICAL REQUIREMENTS WITH EQUIPMENT SUPPLIER PRIOR TO ROUGH-IN. MAKE ADJUSTMENTS AND INSTALL AS PER SUPPLIER REQUIREMENTS AT NO ADDITIONAL CHARGE.
- F. THIS BUILDING MAY CONTAIN ASBESTOS. REFER TO FRONT END SPECIFICATIONS FOR FURTHER INFORMATION.
- G. COORDINATE FINAL LOCATION OF ALL EQUIPMENT WITH MECHANICAL.
- H. ELECTRICAL SUB-CONTRACTOR TO VISIT SITE DURING BID AND VERIFY ALL EXISTING SERVICES ON SITE PRIOR TO SUBMITTING BID. REPORT ANY DISCREPANCIES TO SMS ENGINEERING DURING BID PERIOD.
- I. INSTALL NEW ELECTRICAL EQUIPMENT WHILE EXISTING EQUIPMENT IS OPERATIONAL, IN ORDER TO MINIMIZE TIE-OVER SHUT-DOWNS AND SERVICE DISRUPTIONS. CO-ORDINATE FULLY WITH MECHANICAL FOR THE SEQUENCE OF DEMOLITION AND CONSTRUCTION.
- J. COORDINATE WITH THE CITY PRIOR TO SHUT-DOWN OR REMOVAL OF EQUIPMENT.
- K. UPDATE PANEL DIRECTORIES FOR ALL EXISTING PANELS AND CDP'S AFFECTED BY THE SCOPE OF WORK (DEMOLITION AND NEW CONSTRUCTION).
- L. EMPLOY ROOFING SUB-CONTRACTOR TO SEAL AROUND ALL NEW PENETRATIONS THROUGH ROOF.
- M. COORDINATE FINAL LOCATION OF ALL EQUIPMENT IN MECH. ROOM 004 WITH MECHANICAL SUB-CONTRACTOR PRIOR TO ROUGH-IN.
- N. ELECTRICAL SUB-CONTRACTOR TO PROVIDE CORE DRILLING FOR ALL REQUIRED PENETRATIONS. X-RAY SCAN PRIOR TO CORING. DO NOT CUT REBAR. PROVIDE FIRE STOPPING FOR PENETRATIONS THROUGH FIRE RATED WALLS.
- O. ALL ABANDONED EQUIPMENT AND SERVICES WITHIN AREA OF WORK SHALL BE REMOVED.

KEYNOTES

1. PROVIDE NEW EQUIPMENT ON 4" HOUSEKEEPING PAD; 10M Ø 12" ON CENTRE EACH WAY TOP.
2. PROVIDE NEW PEDIestal MOUNTED CLASS A GFCI 5-20R RECEPTACLE. INSTALL PER CEC RULE 26-704.
3. PROVIDE 120V POWER SOURCE FOR GAS DETECTION CONTROLLER.
4. GAS DETECTION EQUIPMENT BY CONTROLS SUB-CONTRACTOR. PROVIDE FIRE ALARM MONITORING MODULE FOR CONNECTION TO FIRE ALARM SYSTEM AS REQUIRED BY MANITOBA BUILDING CODE. PROVIDE TESTING AND RE-CERTIFICATION OF FIRE ALARM SYSTEM UPON COMPLETION.
5. EXISTING EQUIPMENT TO BE RE-FED FROM NEW DISTRIBUTION AS SHOWN ON SINGLE LINE DRAWING E3.1.
6. PROVIDE TYCO EC-TS THERMOSTAT ON WALL FOR HEAT TRACE CONTROL. INSTALL THERMOSTAT PROBE AT HIGH LEVEL ON BOILER CONDENSATE VENT PIPE. REFER TO KEYNOTE 7 FOR HEAT TRACE INSTALLATION.
7. PROVIDE RANICHEM SXL1-CT HEAT TRACE FROM EACH BOILER CONDENSATE BASE TEE TO COMMON CONDENSATE PIPE RUNNING TO FLOOR DRAIN. COORDINATE WITH MECHANICAL SUB-CONTRACTOR FOR REQUIRED LENGTH. REFER TO EQUIPMENT SCHEDULE FOR OTHER REQUIRED HEAT TRACE SYSTEM COMPONENTS. INSTALL TO MANUFACTURER'S RECOMMENDATIONS.
8. CONNECT TO NEW 20A-1P BREAKER IN PANEL LP-GM WITH 2#10 AWG WIRING.
9. CONNECT TO NEW 20A-1P BREAKER IN PANEL LP-GL WITH 2#10 AWG WIRING.
10. PROVIDE EMERGENCY BOILER SHUTDOWN SWITCH NEAR DOOR. SWITCH TO BE INTERLOCKED WITH BOILERS TO THAT BOTH BOILERS SHUTDOWN IMMEDIATELY UPON USE OF SWITCH.
11. PROVIDE DEDICATED 5-15R RECEPTACLE FOR NEW GLYCOL FILL TANK.
12. PROVIDE 120V POWER FOR BOILER CONTROL PANEL AS SHOWN.
13. PROVIDE NEW PANEL LP-GT TO REPLACE EXISTING PANEL IN FUEL STORAGE ROOM 006. CONNECT TO NEW 75KVA TRANSFORMER TR-LP-GT AND RE-FEED EXISTING LOADS FROM NEW PANEL. PROVIDE NEMA 4X ENCLOSURE C/W TERMINAL BLOCKS FOR EXTENDING WIRING AT PREVIOUS PANEL LOCATION.
14. MCC HOUSEKEEPING PAD TO BE SIZED FOR ADDITIONAL MCC SECTION TO BE MOUNTED IN FUTURE.
15. MOUNT AT HIGH LEVEL.
16. REPLACE MAIN BREAKER WITH REFURBISHED BREAKER, PROVIDED BY THE CITY. INSTALL NEW BREAKERS TO FEED NEW CDP YY AND MCC XX. REFER TO E3.1 FOR DETAILS.
17. PROVIDE TEMPORARY GENSET POWER FOR THE SITE DURING SHUT-DOWN OF MAIN DISTRIBUTION. REFER TO SPECIFICATION SECTION 26050 FOR DETAILS.
18. PROVIDE TEMPORARY REMOVAL AND RE-INSTALLATION OF LIGHT FIXTURES (AS REQUIRED) TO ALLOW DUCT INSTALLATION. RELOCATE FIXTURES (AS REQUIRED) TO SUIT NEW DUCT LOCATIONS. ALL EXISTING AND NEW JUNCTION BOXES TO REMAIN ACCESSIBLE. RELOCATE JUNCTION BOXES AS REQUIRED TO SUIT NEW DUCTWORK INSTALLATION. REFER TO DRAWING M4.1 AND COORDINATE WITH MECHANICAL.
19. RELOCATE EXISTING CONDUITS OR JUNCTION BOXES AS REQUIRED TO SUIT ROOF REINFORCING. REFER TO STRUCTURAL DRAWING S1.1 AND S2.1.



5		
4		
3		
2		
1	ISSUED FOR ADDENDUM 2	vk 20/11/15
0	ISSUED FOR CONSTRUCTION	vk 27/10/15
NO.	Description	BY DD/MM/YY

APEGM
 Certificate of Authorization
 SMS Engineering Ltd.
 No. 106 Expiry April 30, 2016

ORIGINAL CONTRACT DRAWING BROWED AND SEALED BY
 V.E. KANE, P. ENG
 OCTOBER 27, 2015

770 Bradford Street
 Winnipeg, Canada
 T 204 775 0291
 SMSeng.com

SMS ENGINEERING

Winnipeg Transit

Project Title
CITY OF WINNIPEG FORT ROUGE TRANSIT BASE - SERVICE BAY AND B-SECTION VENTILATION UPGRADE
 WINNIPEG MANITOBA

Drawing Title
MAIN FLOOR AND ROOF PLAN - NEW CONSTRUCTION - ELECTRICAL

Drawn By	WPD	Checked By	vk	Approved By	vk
Scale	N.T.S.	Date	NOVEMBER 2015	Project No.	14-194-01
Revision Number	1	Drawing Number	E2.1	Sheet Order	2 OF 3