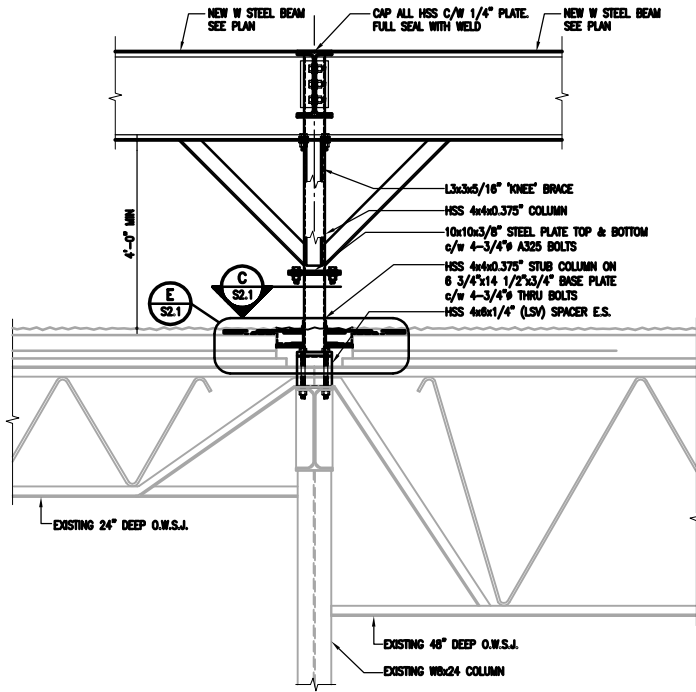
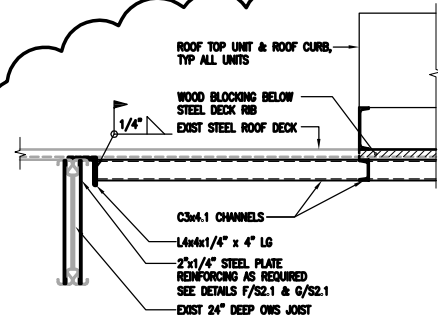


1 SECTION
S2.1 3/4" = 1'-0"



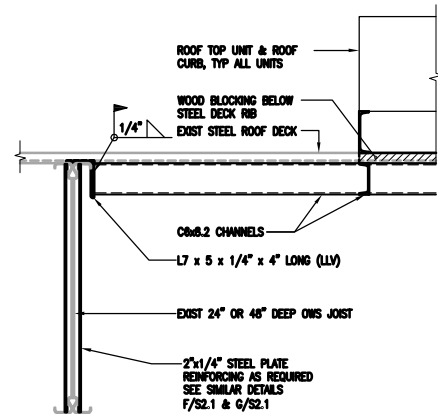
STEEL SUPPLIER TO DESIGN ALL CONNECTIONS NOT SPECIFICALLY DETAILED ON THESE DRAWINGS.

2 SECTION
S2.1 3/4" = 1'-0"



4 SECTION
S2.1 3/4" = 1'-0"

NOTE: FRAMING FOR 450 lb UNITS.



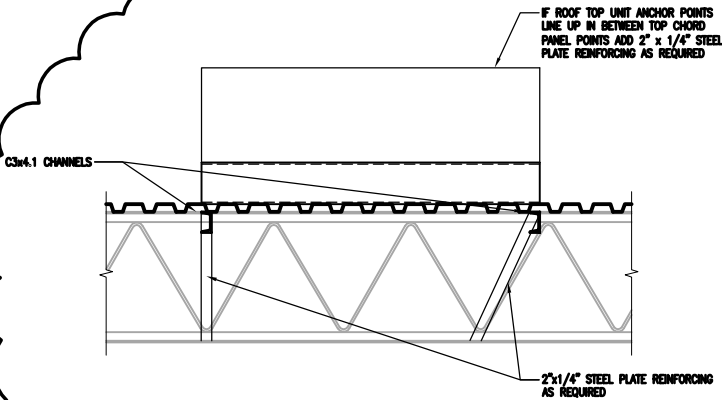
4A SECTION
S2.1 3/4" = 1'-0"

NOTE: FRAMING FOR UNITS OVER 700 lb.

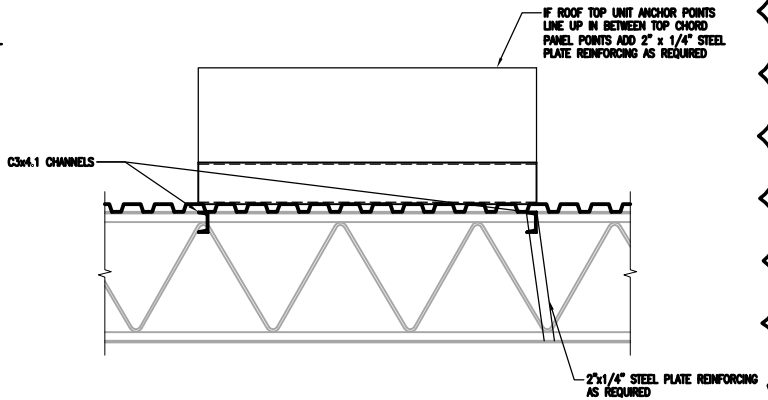
3 SECTION
S2.1 3/4" = 1'-0"

NOTE: CONTRACTOR IS TO CUT OUT EXISTING ROOFING, INSULATION & STEEL DECKING AT EACH NEW COLUMN LOCATION TO ALLOW FOR THE BASE PLATE TO BE INSTALLED DIRECTLY ON TOP OF THE NEW STEEL HSS SPACERS. ONCE THE COLUMNS ARE INSTALLED, THE CONTRACTOR IS RESPONSIBLE FOR RE-ROOFING AROUND EACH NEW COLUMN

F REINFORCING DETAIL
S2.1 3/4" = 1'-0"



G REINFORCING DETAIL
S2.1 3/4" = 1'-0"



300-275 Carlton Street
Winnipeg, Manitoba R3C 5R6
T 204. 943. 7501
F 204. 943. 7507



**Crosier Kilgour
& Partners Ltd.**
CONSULTING STRUCTURAL ENGINEERS

Project		CITY OF WINNIPEG FORT ROUGE TRANSIT BASE WINNIPEG		MANITOBA	
Sheet Title		REVISED DETAILS & SECTIONS		Sheet No.	
Design		Date		File	
JAL	MPP	2015-11-18	2014-0736	RS-1	