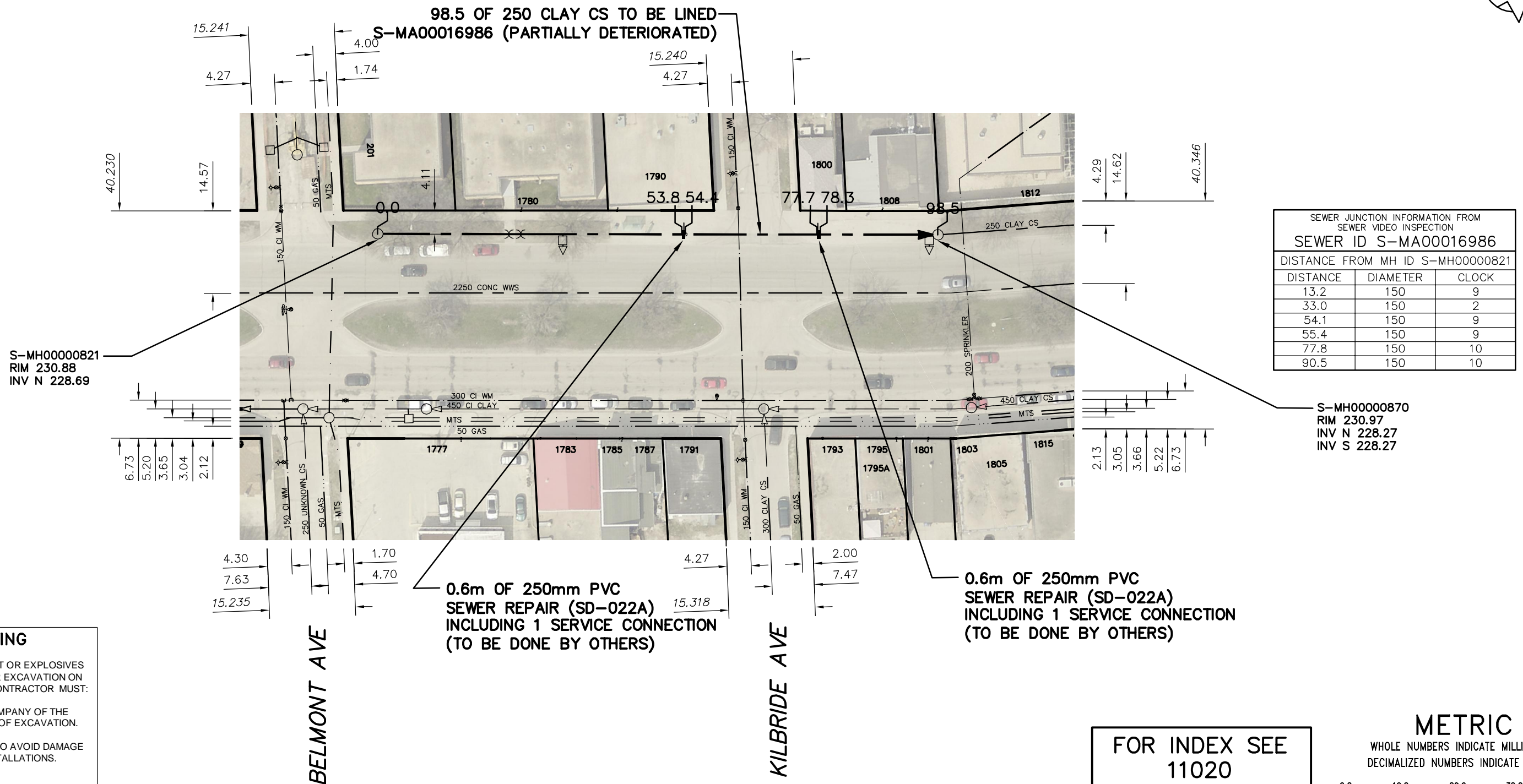
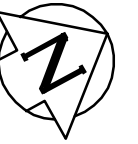


MAIN STREET (W R)



SEWER JUNCTION INFORMATION FROM SEWER VIDEO INSPECTION
SEWER ID S-MA00016986

DISTANCE FROM MH ID S-MH00000821		
DISTANCE	DIAMETER	CLOCK
13.2	150	9
33.0	150	2
54.1	150	9
55.4	150	9
77.8	150	10
90.5	150	10

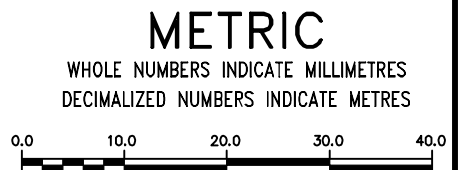
WARNING

IF POWER EQUIPMENT OR EXPLOSIVES ARE TO BE USED FOR EXCAVATION ON THIS PROJECT THE CONTRACTOR MUST:

- 1) NOTIFY THE GAS COMPANY OF THE PROPOSED LOCATION OF EXCAVATION.
- 2) TAKE PRECAUTION TO AVOID DAMAGE TO GAS COMPANY INSTALLATIONS.

SEE PROVINCIAL REGULATION 210/72 FOR DETAILS

FOR INDEX SEE 11020



LOCATION APPROVED UNDERGROUND STRUCTURES

SUPV. U/G STRUCTURES COMMITTEE	DATE

NOTE:
LOCATION OF UNDERGROUND STRUCTURES AS SHOWN ARE BASED ON THE BEST INFORMATION AVAILABLE BUT NO GUARANTEE IS GIVEN THAT ALL EXISTING UTILITIES ARE SHOWN OR THAT THE GIVEN LOCATIONS ARE EXACT. CONFIRMATION OF EXISTENCE AND EXACT LOCATION OF ALL SERVICES MUST BE OBTAINED FROM THE INDIVIDUAL UTILITIES BEFORE PROCEEDING WITH CONSTRUCTION.

B.M. ELEV.			
CONSTRUCTION COMPLETION DATE: YYYY MM DD			
NO.	REVISIONS	DATE	BY

DESIGNED BY	NC	CHECKED BY	SC
DRAWN BY	RJ	APPROVED BY	KZ
SCALE:		RELEASED FOR CONSTRUCTION	
HORIZONTAL	1:750	KAS ZUREK	
VERTICAL			
DATE	2016 01 29 <th>DATE</th> <td> </td>	DATE	
PLOT DATE: 2016 01 29			

ENGINEER'S SEAL

ORIGINAL SIGNED BY N.M. CONTI 16/01/28

CONSULTANT DRAWING NUMBER: -

THE CITY OF WINNIPEG
WATER AND WASTE DEPARTMENT
ENGINEERING DIVISION

2015 SEWER RENEWALS
BY CIPP LINING
MAIN STREET (W R)
MH AT BELMONT AVENUE (N R) TO
1ST MH N OF KILBRIDE AVENUE

SHEET 27 OF 56
CITY DRAWING NUMBER
11044