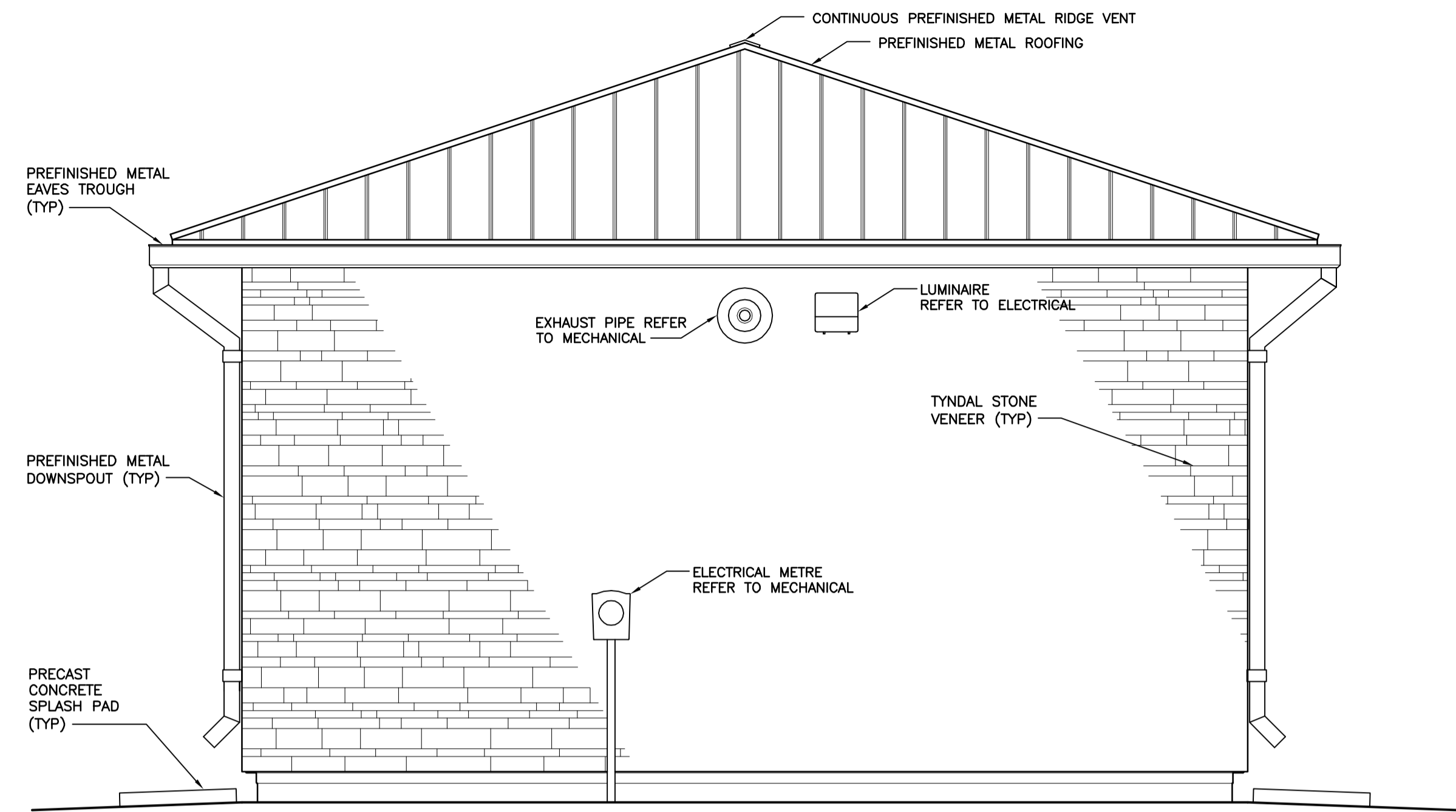


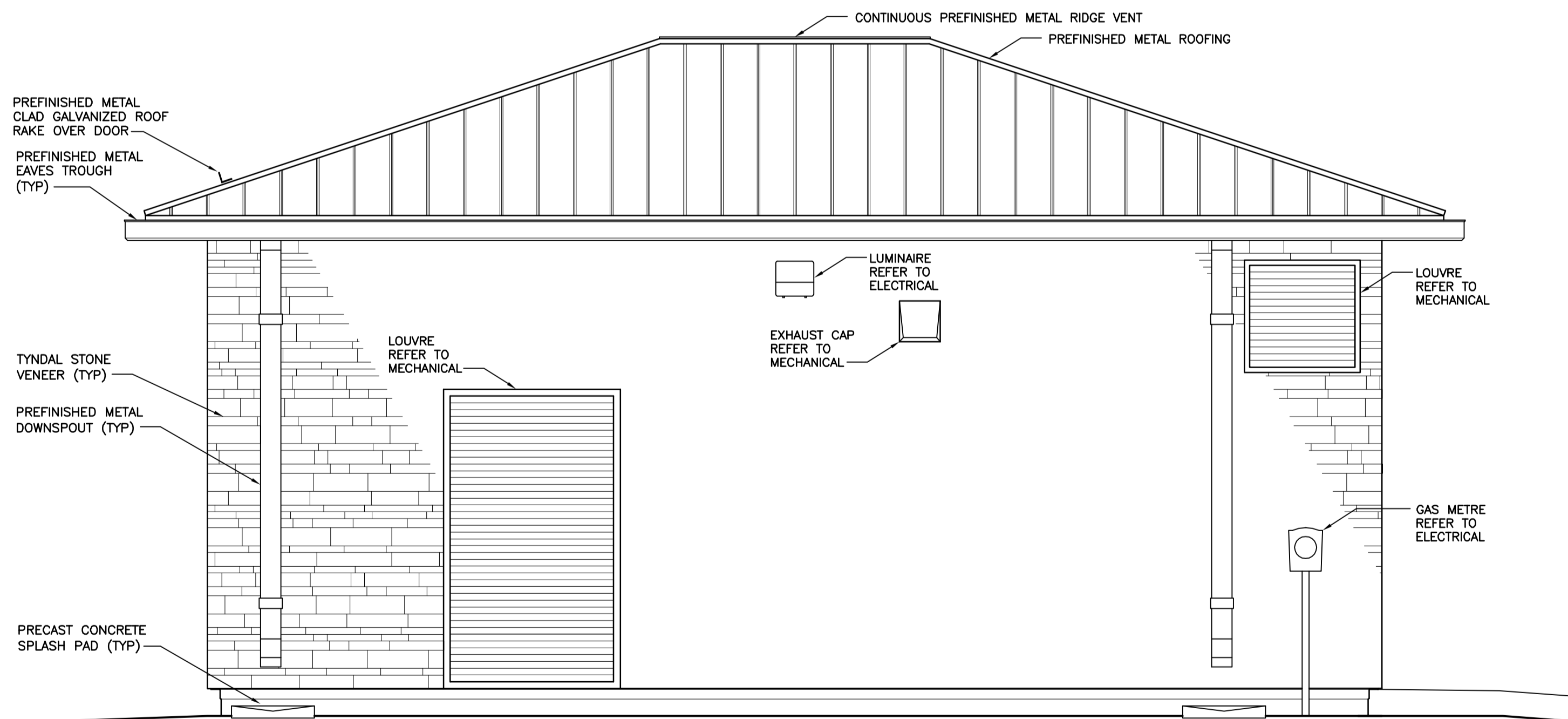
SOUTH ELEVATION

1:30



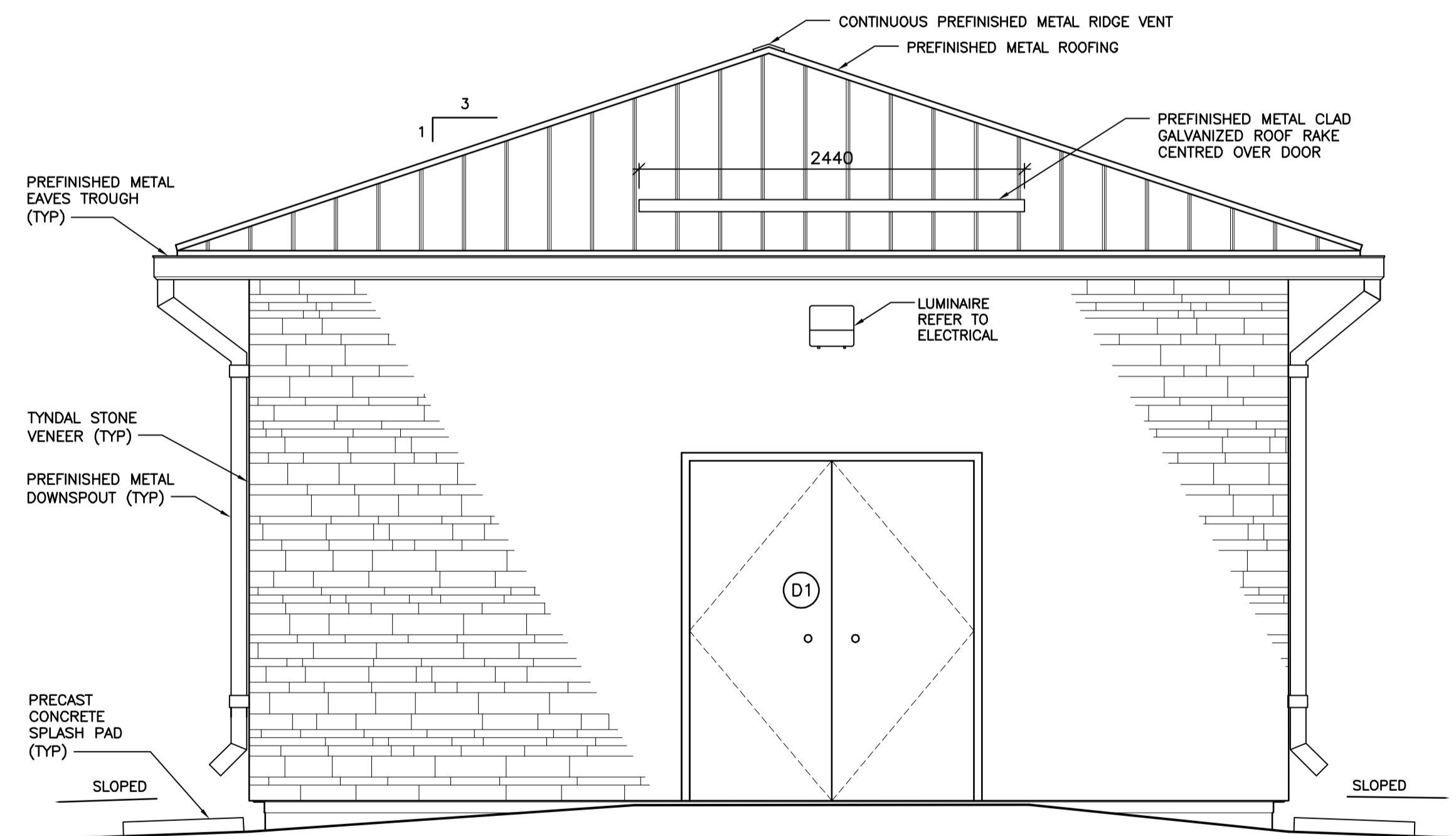
EAST ELEVATION

1:30



NORTH ELEVATION

1:30



WEST ELEVATION

1:30

V:\1168\active\116809351\0300_drawing\0302_sheet_files\04_architectural\phase_2\09351a-101-846.dwg
2016/07/07 3:48 PM By: Remonrose, kdash

METRIC
WHOLE NUMBERS INDICATE MILLIMETRES
DECIMALIZED NUMBERS INDICATE METRES



LOCATION APPROVED UNDERGROUND STRUCTURES

SUPV. U/G STRUCTURES COMMITTEE DATE

NOTE:
LOCATION OF UNDERGROUND STRUCTURES AS SHOWN ARE BASED ON THE BEST INFORMATION AVAILABLE BUT NO GUARANTEE IS GIVEN THAT ALL EXISTING UTILITIES ARE SHOWN OR THAT THE GIVEN LOCATIONS ARE EXACT. CONFIRMATION OF EXISTENCE AND EXACT LOCATION OF ALL SERVICES MUST BE OBTAINED FROM THE INDIVIDUAL UTILITIES BEFORE PROCEEDING WITH CONSTRUCTION.

B.M. ELEV.	NO.	REVISIONS	DATE	BY
	2	ISSUED FOR TENDER	15.12.23	M.H.
	1	ISSUED FOR 95% REVIEW	15.12.04	M.H.
			YY.MM.DD.	

Stantec
500 - 311 Portage Avenue, Winnipeg M8 Canada R3B 2B9
Tel. 204.489.5900 Fax. 204.453.9012 www.stantec.com

DESIGNED BY	W.D.L.	CHECKED BY	S.N.
DRAWN BY	P.D.	APPROVED BY	B.F.
HOR. SCALE:	AS. NOTED	RELEASED FOR CONSTRUCTION:	
VERTICAL:		DATE	2015.11.05

ENGINEER'S SEAL

CONSULTANT DRAWING NO.
B-102

THE CITY OF WINNIPEG
PLANNING, PROPERTY & DEVELOPMENT
Winnipeg

ST. BONIFACE INDUSTRIAL PARK PHASE 2
WASTEWATER PUMPING STATION
BUILDING ELEVATIONS

SHEET	OF
I	I
CAD FILE DRAWING NUMBER	09351A-101-846.DWG
CITY DRAWING NUMBER	I-0215L-B0102-001