

- REFERENCE NOTES**
- PAVEMENT DIMENSIONS ARE TO BACK OF CURB
 - BASELINE IS CENTRE LINE RIGHT-OF-WAY
 - PROPERTY LINES OBTAINED FROM CITY OF WINNIPEG L.B.I.S., AND NO SCALE FACTOR WAS APPLIED
 - REFER TO AECOM FIELD BOOK NO. 4904

- CONSTRUCTION NOTES**
- PLANE EXISTING ASPHALT AND CONSTRUCT NEW ASPHALTIC PAVEMENT TYPE 1A (AVG THICKNESS 85mm)
 - REMOVE EXISTING CONCRETE PAVEMENT AND CONSTRUCT NEW 150mm REINFORCED CONCRETE PAVEMENT
 - RENEW EXISTING 100mm CONCRETE SIDEWALK
 - CONSTRUCT NEW BARRIER CURB (150mm HT. SEPARATE)
 - CONSTRUCT NEW MONOLITHIC CURB RAMP (10mm HT. INTEGRAL)
 - CONSTRUCT NEW MODIFIED BARRIER CURB (150mm HT. INTEGRAL)
 - CONSTRUCT NEW MONOLITHIC CONCRETE BULLNOSE
 - CONSTRUCT SPLASH STRIP (150mm HT.)
 - REMOVE EXISTING MEDIAN SLAB AND BARRIER CURB AND CONSTRUCT NEW MONOLITHIC MEDIAN SLAB
 - REMOVE AND REPLACE EXISTING CURB AND GUTTER FRAME AND COVER
 - ADJUST EXISTING MANHOLE/CATCH BASIN TO GRADE
 - REMOVE EXISTING CURB AND GUTTER INLET AND ABANDON LEAD AND INSTALL NEW CURB AND GUTTER INLET d/w CATCHPIT (SD-023) AND CONNECT NEW LEAD TO EXISTING CATCHBASIN
 - INSTALL NEW DETECTABLE SURFACE WARNING TILE



METRIC
WHOLE NUMBERS INDICATE MILLIMETRES
DECIMALIZED NUMBERS INDICATE METRES

EXISTING	LEGEND - PLAN	PROPOSED	EXISTING	LEGEND - PLAN	PROPOSED	EXISTING	LEGEND - PROFILE	PROPOSED
150 mm W.M.	WATERMAIN	150 mm W.M.	---	HYDRO	---	---	C PROFILE	---
Hydrant symbol	HYDRANT	Hydrant symbol	---	M.T.S.	---	---	WEST GUTTER	---
Valve symbol	VALVE	Valve symbol	---	CONCRETE	---	---	WEST MEDIAN GUTTER	---
300mm L.D.S.	LAND DRAINAGE SEWER	300mm L.D.S.	---	ASPHALT	---	---	EAST GUTTER	---
250mm W.W.S.	WASTEWATER SEWER	250mm W.W.S.	---	PROPERTY LINE	---	---	EAST MEDIAN GUTTER	---
Manhole symbol	MANHOLE	Manhole symbol	---	SURVEY BAR	---	---		
Catch basin symbol	CATCH BASIN	Catch basin symbol	---	ELEVATION	(35.750)	---		
Catch pit symbol	CATCH PIT	Catch pit symbol	---	TREE	---	---		
Junctions symbol	JUNCTIONS	Junctions symbol	---	SIDEWALK RAMP	---	---		
Culvert symbol	CULVERT	Culvert symbol	---	CONCRETE SIDEWALK	---	---		
Gas symbol	GAS	Gas symbol	---	FENCE	---	---		

LOCATION APPROVED UNDERGROUND STRUCTURES

SUPV. U/G STRUCTURES COMMITTEE DATE

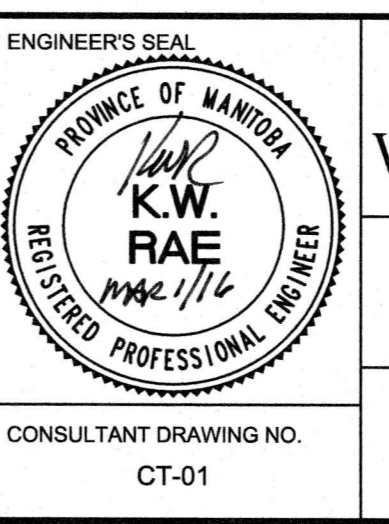
NOTE:
LOCATION OF UNDERGROUND STRUCTURES AS SHOWN ARE BASED ON THE BEST INFORMATION AVAILABLE. BUT NO GUARANTEE IS GIVEN THAT ALL EXISTING UTILITIES ARE SHOWN OR THAT THE GIVEN LOCATIONS ARE EXACT. CONFIRMATION OF EXISTENCE AND EXACT LOCATION OF ALL SERVICES MUST BE OBTAINED FROM THE INDIVIDUAL UTILITIES BEFORE PROCEEDING WITH CONSTRUCTION.

B.M. 47 - 026 N side Roblin Blvd in median of Barker Blvd, Tbt ELEV. 237.183
12.2m N of C.L. Pav't W. Bnd lanes Roblin Blvd. & 5.9m W of C.L. Pav't N. Bnd lanes Barker Blvd

NO.	ISSUED FOR TENDER	DATE	BY
0	ISSUED FOR TENDER	03/02/2016	BC
A	ISSUED FOR REVIEW	02/05/2016	BC

AECOM

DESIGNED BY: BC
CHECKED BY: KWR
DRAWN BY: JC
APPROVED BY: [Signature]
HOR. SCALE: 1:250
VERTICAL: 1:10
RELEASED FOR CONSTRUCTION BY: [Signature]
DATE: 1/16



THE CITY OF WINNIPEG
PUBLIC WORKS DEPARTMENT
ENGINEERING DIVISION

2016 LOCAL STREET RENEWAL PROGRAM

BARKER BLVD N. & S. BOUND- ROBLIN BLVD TO BARKER BLVD
PAVEMENT REHABILITATION
ROBLIN BOULEVARD TO STATION 0+220

CITY DRAWING NUMBER: SHEET 01 OF 12