

T/O PARAPET STUDS
104 600

T/O CONC. BLK.
103 400

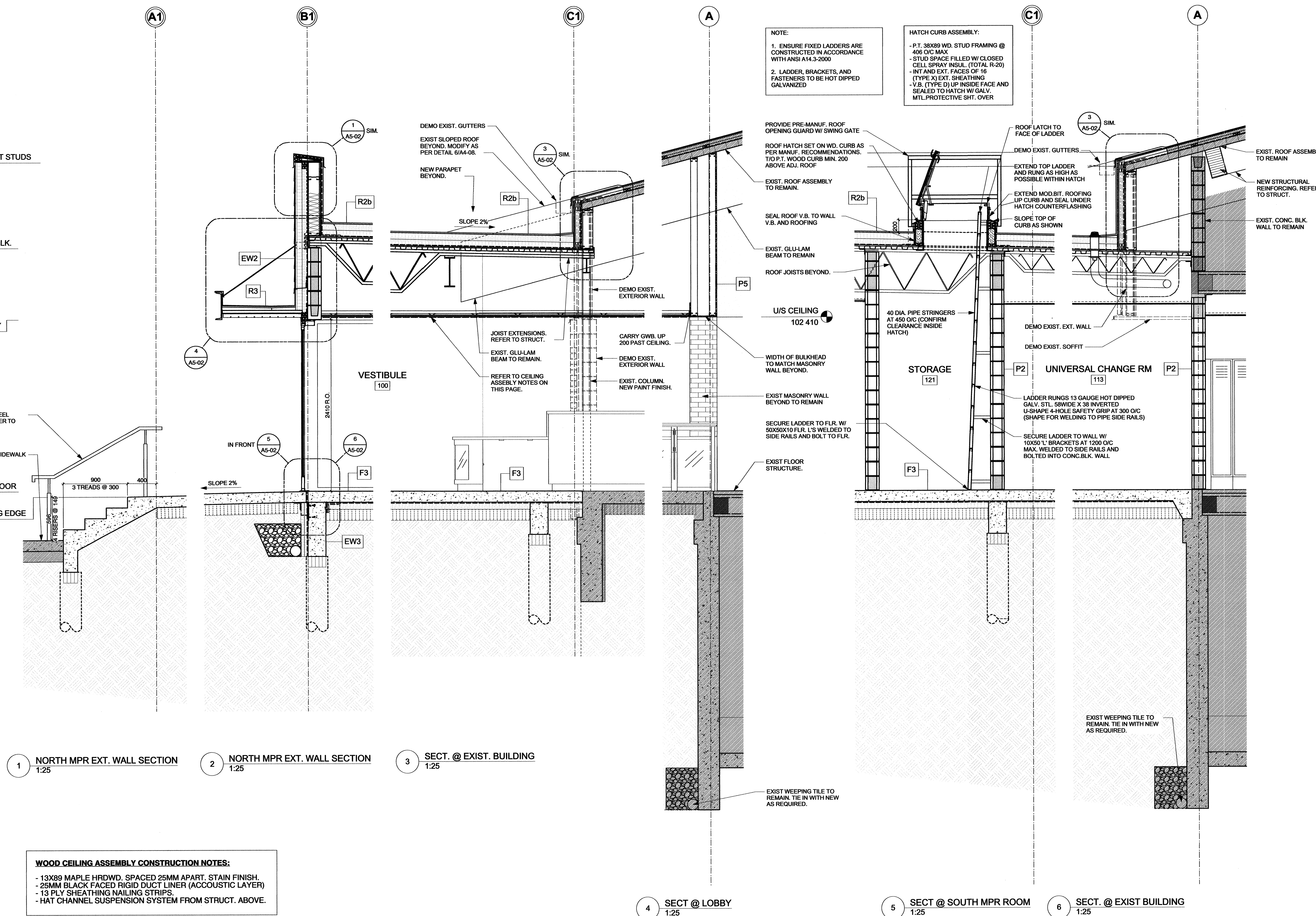
U/S CANOPY
102 410

STAINLESS STEEL HANDRAIL REFER TO LANDSCAPE.

EXIST CONC. SIDEWALK

T/O MAIN FLOOR
100 000

T/O LEADING EDGE
099 926



NOTE:
 1. ENSURE FIXED LADDERS ARE CONSTRUCTED IN ACCORDANCE WITH ANSI A14.3-2000
 2. LADDER, BRACKETS, AND FASTENERS TO BE HOT DIPPED GALVANIZED

HATCH CURB ASSEMBLY:
 - P.T. 38X89 WD. STUD FRAMING @ 406 O/C MAX
 - STUD SPACE FILLED W/ CLOSED CELL SPRAY INSUL. (TOTAL R-20)
 - INT AND EXT. FACES OF 16 (TYPE X) EXT. SHEATHING
 - V.B. (TYPE D) UP INSIDE FACE AND SEALED TO HATCH W/ GALV. MTL. PROTECTIVE SHT. OVER

1 NORTH MPR EXT. WALL SECTION
1:25

2 NORTH MPR EXT. WALL SECTION
1:25

3 SECT. @ EXIST. BUILDING
1:25

4 SECT @ LOBBY
1:25

5 SECT @ SOUTH MPR ROOM
1:25

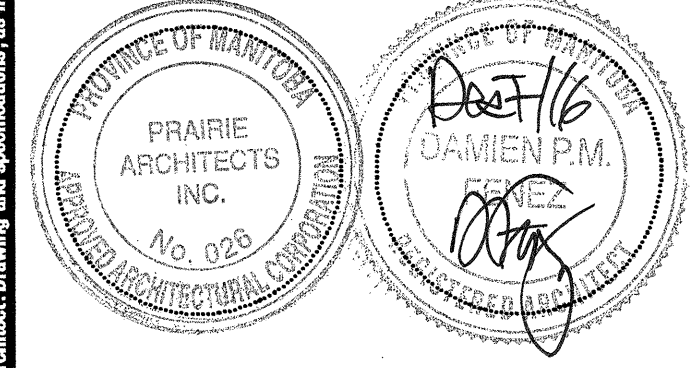
6 SECT. @ EXIST BUILDING
1:25

WOOD CEILING ASSEMBLY CONSTRUCTION NOTES:
 - 13X89 MAPLE HRDWD. SPACED 25MM APART. STAIN FINISH.
 - 25MM BLACK FACED RIGID DUCT LINER (ACCOUSTIC LAYER)
 - 13 PLY SHEATHING NAILING STRIPS
 - HAT CHANNEL SUSPENSION SYSTEM FROM STRUCT. ABOVE.

Issue / rev.

#	date	issue notes
0	2016.12.08	ISSUED FOR CONSTRUCTION

professional seals



project information

SEVEN OAKS POOL RENOVATION & ADDITION
 444 ADSUM DRIVE
 WINNIPEG, MB
 CANADA

client

CITY OF WINNIPEG
 4TH FLOOR - 85 KING ST.
 WINNIPEG, MB

drawing information

WALL SECTIONS
 drawn by: LW/JDB
 approved by: DF
 scale: 1:25
 date issued: 2016.12.08
 proj. #: 2014.66
 rev. #: R-0

A4
05

This drawing must not be used. The contractor shall verify all dimensions and other data on site prior to commencement of work. All discrepancies, errors, and omissions are to be reported to the architect. Drawing and specifications are instruments of service and the copyright in this same being reserved to the architect. No reproduction may be made without the permission of the architect and when made, must bear the same. All details to be returned to the architect on request.