

PROPERTY LIMITS DELINEATION
DELINEATION OF PROPERTY LIMITS AS SHOWN ON THIS DWG DOES NOT REPRESENT A "LEGAL SURVEY". KGS GROUP MAKES NO REPRESENTATION OR WARRANTY AS TO THE ACCURACY OF PROPERTY LIMITS DELINEATED ON THIS DWG, NOR ON THE DIMENSIONAL ACCURACY OF DWG FEATURES RELATIVE TO THOSE PROPERTY LIMITS.

NOTE:
LOCATION OF UNDERGROUND STRUCTURES AS SHOWN ARE BASED ON THE BEST INFORMATION AVAILABLE BUT NO GUARANTEE IS GIVEN THAT ALL EXISTING UTILITIES ARE SHOWN OR THAT THE GIVEN LOCATIONS ARE EXACT. CONFIRMATION OF EXISTENCE AND EXACT LOCATION OF ALL SERVICES MUST BE OBTAINED FROM THE INDIVIDUAL UTILITIES BEFORE PROCEEDING WITH CONSTRUCTION.

WARNING

1. NOTIFY THE GAS COMPANY OF THE PROPOSED LOCATION OF EXCAVATION.
2. TAKE PRECAUTION TO AVOID DAMAGE TO GAS COMPANY INSTALLATIONS.
3. SEE PROVINCIAL REGULATION 210/72 FOR DETAILS.


METRIC
WHOLE NUMBERS INDICATE MILLIMETRES
DECIMALIZED NUMBERS INDICATE METRES

NOTES:

1. ALL WORK SHALL BE PERFORMED IN ACCORDANCE WITH THE LATEST REVISION OF THE CITY OF WINNIPEG STANDARD CONSTRUCTION SPECIFICATIONS.
2. CONTRACTOR SHALL BE RESPONSIBLE FOR RESTORING ALL AREAS DISTURBED BY INSTALLATION OF ROOF DRAIN CONNECTION TO EXISTING CATCHBASIN TO EQUAL OR BETTER CONDITION THAN PRIOR TO CONSTRUCTION.
3. STORM WATER RUNOFF STORAGE FROM BUILDING ADDITION WAS ACCOUNTED FOR IN "SEVEN OAKS POOL PARKING LOT RECONSTRUCTION PROJECT - SITE GRADING AND SERVICING PLAN" DRAWING C03-REV 3, DATED JULY 08, 2014 AS PREPARED BY WSP (CITY DRAWING NO. 23-2014-C03). STORM WATER STORAGE PROVIDED ON PARKING LOT SURFACE FOR ENTIRE SITE INCLUDING PROVISION FOR BUILDING ADDITION. NO ADDITIONAL SITE STORMWATER STORAGE REQUIRED FOR ADDITION.

Issue / rev.	date	issue notes
0	2016.12.08	ISSUED FOR CONSTRUCTION
#		

professional seals



project information

SEVEN OAKS POOL RENOVATION & ADDITION

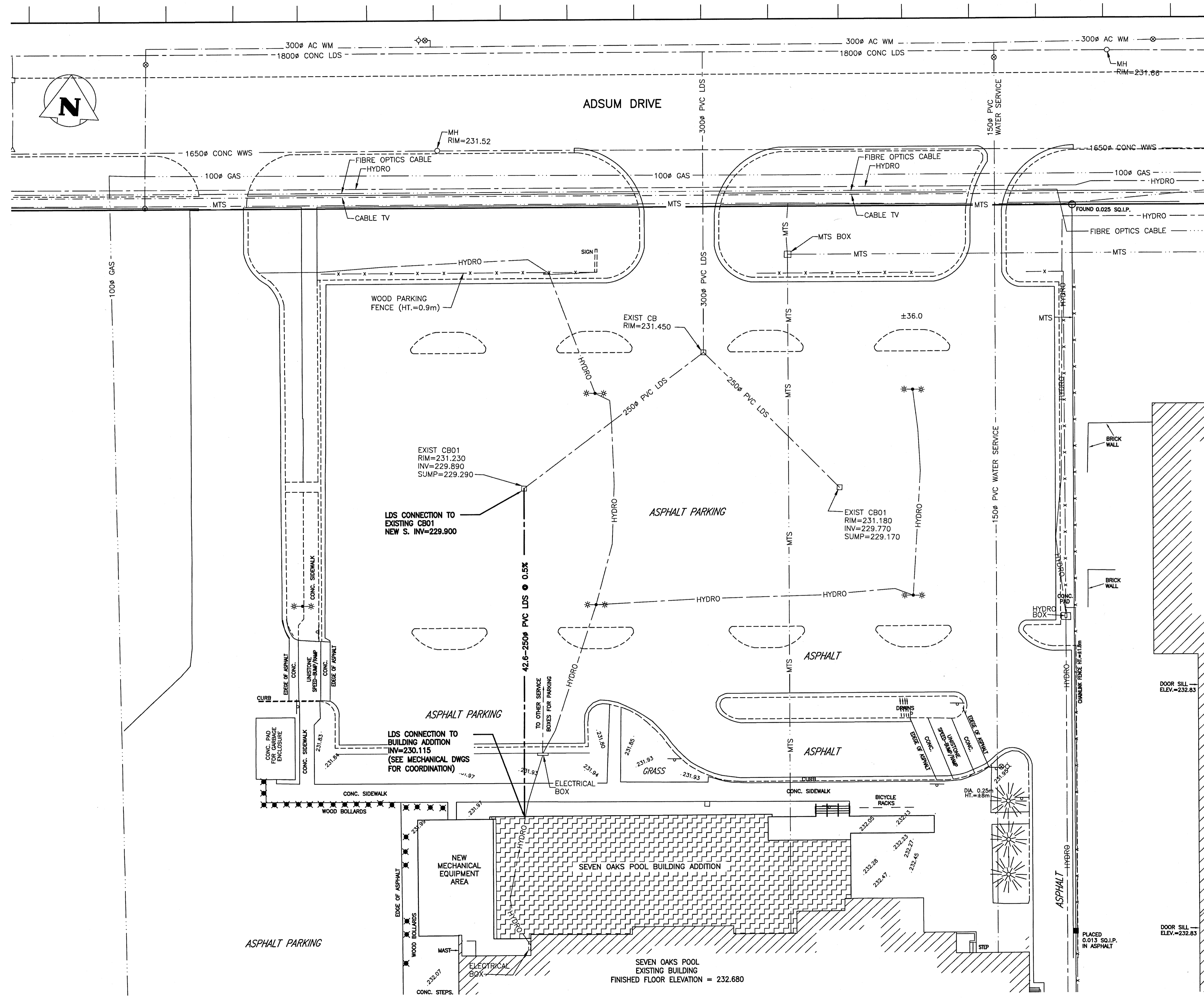
444 Adsum Drive
Winnipeg, MB
Canada

client

drawing information

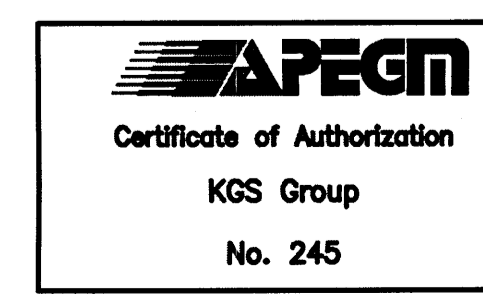
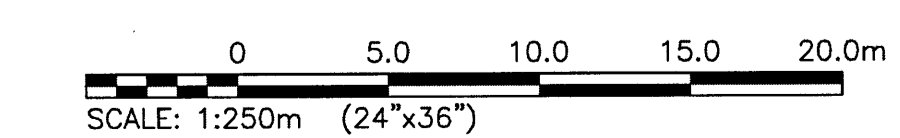
MUNICIPAL UNDERGROUND SERVICES LAND DRAINAGE CONNECTION

drawn by: BJM
approved by: [Signature]
scale: AS NOTED
date issued: 2016.12.08
proj. #: 14-1736-008
rev. #: R-0



LEGEND:

	EXISTING	NEW
WATER MAIN	—	—
LDS SEWER	—	—
WWS SEWER	—	—
GAS	—	—
HYDRO	—	—
MTS	—	—
FIBRE OPTICS	—	—
TV CABLE	—	—
WATER MAIN VALVE	⊗	⊗
FIRE HYDRANT	⊕	⊕
SEWER MANHOLE	○	○
LDS SEWER CB	□	□
LDS SEWER CI	△	△
LAMP STANDARD	* * *	* * *
BOLLARD	✱	✱



File Name: U:\FMS\14-1736-008\14-1736-008_C1-00.dwg - Tab: C1-00 Plotted By: Bnikolayenko 16/12/07 [Wed 2:17pm]

