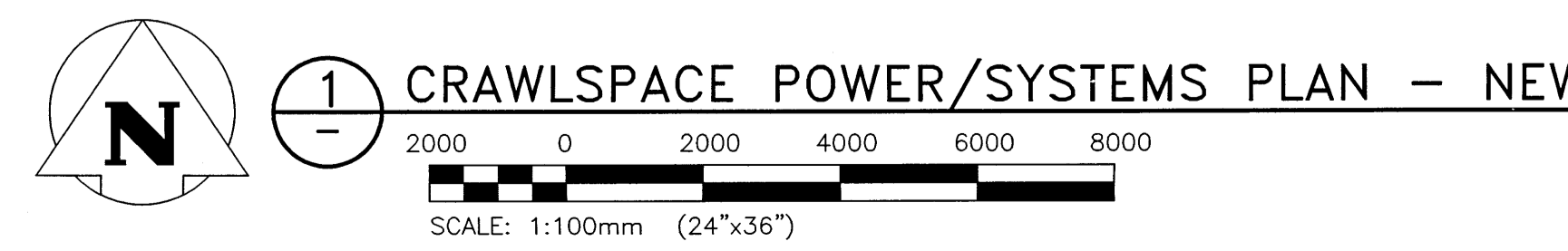


NOTES:

- INSTALL BOILER GAS SHUT OFF SWITCHES DIRECTLY ADJACENT TO THE DOOR AT 1500mm AFF.
- MECHANICAL EQUIPMENT LOCATIONS SHOWN ARE APPROXIMATE. REFER TO MECHANICAL DRAWINGS FOR FINAL EQUIPMENT LOCATIONS.
- PROVIDE AND INSTALL JUNCTION BOX IN THE CEILING SPACE. TERMINATE EXISTING FIRE ALARM CIRCUITS AND EXTEND TO THE NEW FIRE ALARM PANEL LOCATION.
- CONTROL PANEL FOR SHOWER SUPPLY. CONTROL PANEL PROVIDED BY OWNER. CONTRACTOR SHALL INSTALL CONTROL PANELS INCLUDING ALL POWER AND CONTROL WIRING TO SHOWERS.
- CONTRACTOR SHALL COORDINATE WITH SPRINKLER SHOP DRAWINGS FOR FINAL QUANTITY AND LOCATION PRIOR TO INSTALLATION.
- COORDINATE ALL CONNECTIONS TO SPLASH AND POOL EQUIPMENT. LOCATIONS SHOWN ARE APPROXIMATE. REFER TO POOL SUPPLIER DRAWINGS FOR FINAL EQUIPMENT LOCATIONS.
- EXISTING FEEDER TO PANELS 'A', 'B' AND 'C'. CONTRACTOR TO EXTEND TO NEW MEZZANINE ELECTRICAL ROOM AS REQUIRED.
- CONTRACTOR TO PROVIDE A NEW WEATHERPROOF HEAT DETECTOR TO THE TOP OF THE NON-HEATED STAIRWELL. PROVIDE ZONE AT ANNUNCIATOR.
- TIE INTO EXISTING BUILDING GROUND.
- INDICATED GROUND RODS SHALL BE COMPLETE WITH A TEST WELL COVER.
- ALL GROUNDING AND BONDING SHALL BE INSTALLED AS PER CEC SECTION 10 AND 68.
- GROUND CONDUCTOR CONNECTING GROUND RODS SHALL BE #4/0 AWG BARE STRANDED COPPER.
- GROUND CONDUCTORS BETWEEN GROUND LOOP AND THE POOL SHALL BE #2/0 AWG BARE STRANDED COPPER.
- ALL BURIED OR CONCEALED GROUND CONNECTIONS SHALL BE EXOTHERMIC TYPE. CRIMP TYPE CONNECTIONS ARE ACCEPTABLE ONLY FOR ACCESSIBLE CONNECTIONS.
- PROVIDE FOUR (4) CONNECTIONS TO THE PLAY STRUCTURE MOUNTING PLATES
- PROVIDE CONNECTION TO ALL POOL MECHANICAL EQUIPMENT.
- CONTRACTOR SHALL PROVIDE AND INSTALL A NEW OULETTE BASE BOARD HEATER. THE INTENT IS TO REPLACE THE EXISTING UNIT WITH A UNIT OF THE SAME SIZE. CONTRACTOR SHALL CONFIRM THE SIZE OF THE EXISTING UNIT AT SHOP DRAWING PHASE. EXISTING CIRCUIT TO BE REUSED.
- CONTRACTOR TO COORDINATE ALL EXISTING CONDUIT WITH NEW VESTIBULE. CONDUIT SHALL BE REMOVED AND REINSTALLED TO SUIT AS REQUIRED. RELOCATE JUNCTION BOXES AS NEEDED.
- PROVIDE, INSTALL, TEST AND COMMISSION A HEAT TRACE SYSTEM. PROVIDE 120V SELF-REGULATING TYPE HEAT TRACE CABLE WITH 3 WATT/FT OUTPUT. HEAT TRACE CABLE SHALL BE THERMAN BSX3-1 OR APPROVED EQUIVALENT. PROVIDE HEAT TRACE CABLE AND AMBIENT TEMPERATURE RTD (AMBIENT RTD SHALL BE 100SI PLATINUM THERMAN RTD-100 OR APPROVED EQUIVALENT) FOR EACH OF THE FOUR (4) DRAIN LINES. CONFIRM DRAIN LINE LOCATION AND QUANTITY WITH AIR HANDLER SHOP DRAWINGS. HEAT TRACE SYSTEM SHALL BE COMPLETE WITH ALL REQUIRED EQUIPMENT INCLUDING BUT NOT LIMITED TO JUNCTION BOXES, END SEALS, POWER CONNECTIONS AND TAPE.
- PROVIDE AND INSTALL A HEAT TRACE CONTROLLER FOR CONTROL OF THE FOUR AHU-1 DRAIN LINE HEAT TRACE. HEAT TRACE CONTROLLER SHALL BE COMPLETE WITH TWO POWER CIRCUIT INPUTS AND ONE OUTPUT ALARM CONTACT. WIRE THE ALARM TO THE DDC. HEAT TRACE CONTROLLER SHALL BE THERMAN MODEL TC-202A OR APPROVED EQUIVALENT IN ACCORDANCE WITH B7.
- CSTE LOCATION TO BE CONFIRMED WITH MB HYDRO, OWNER AND ARCHITECT PRIOR TO INSTALLATION. COORDINATE WITH STRUCTURAL FOR CONCRETE PAD.
- CONFIRM EQUIPMENT LOCATIONS WITH POOL EQUIPMENT LOCATION WITH POOL EQUIPMENT PROVIDER.

NOTES (CONT'D):

- EXTEND ALL NEW POOL INTRUSION ALARM DECK BEAM DETECTORS AND DROWN ALARM SYSTEM CONDUITS TO A SINGLE JUNCTION POINT WITHIN THE CRAWSPACE. REFER TO DEVICE LOCATIONS SHOWN IN ABOVE SPLASH PAD/POOL DECK AREA ABOVE. REFER TO DRAWING E3-01. EXTEND THE FOLLOWING CONDUITS FROM THE NEW JUNCTION BOX:
 - 1 X TWO (2") CONDUITS C/W WIRING TO EXISTING RELOCATED DROWNING SYSTEM PANEL IN ROOM 114
 - 1 X TWO (2") C/W WIRING TO EXISTING RELOCATED POOL INTRUSION SYSTEM PANEL IN ROOM 107.



File Name: P:\Projects\2014\14-1736-008\DWG\Elec\14-1736-008-E3-00.dwg - Tab: E3-00 Plotted By: aderoche 16/12/09 [Fri, 9:46am]

This drawing must not be scaled. The contractor shall verify all dimensions and other data on site prior to commencement of work. All discrepancies, errors, and omissions are to be reported to the architect. Drawing and specifications, as instruments of service, are the property of the architect. The copyright in the same being reserved to him. No reproduction may be made without the permission of the architect, and when made, must bear his name. All prints to be returned to the architect on request.