

GRILLE SCHEDULE

GRILLE No.	E.H. PRICE DESIGNATION	COMMENTS
G1	100#/300x300/ASCD/31/3C/B12	4-WAY SUPPLY DIFFUSER
G2	150#/600x600/ASCD/31/3C/B12	4-WAY SUPPLY DIFFUSER
G3	200#/600x600/ASCD/31/3C/B12	4-WAY SUPPLY DIFFUSER
G4	250#/600x600/ASCD/31/3C/B12	4-WAY SUPPLY DIFFUSER
G5	250x200/620/F/L/A/B12	LOUVERED SUPPLY GRILLE
G6	300x100/610Z/F/L/A/B12	LOUVERED RETURN
G7	200x200/610Z/F/L/A/B12	LOUVERED RETURN
G8	400x400/610Z/F/L/A/B12	LOUVERED RETURN
G9	700x550/610DAL/F/L/A/B12	LOUVERED RETURN
G10	300#/600x600/ASCD/31/3C/B12	SQUARE CONE DIFFUSER
G11	1200x200/620DAL/L/A/B12	LOUVERED SUPPLY GRILLE C/W DAMPER
G12	NSE-1/1200x600	ALUMINUM LOUVERED RETURN
G13	1800x250/LBPH27B/1000/VCS3/B12	LINEAR BAR SUPPLY GRILLE C/W DAMPER
G14	650/550/ATGH/C/B15	DOOR TRANSFER GRILLE
G15	650/550/ATG1/C/B15	DOOR TRANSFER GRILLE
G16	350x200/610DAL/F/L/A/B15	LOUVERED SUPPLY
G17	900x200/610ZDAL/F/L/A/B15	LOUVERED RETURN
G18	350x300/520D/F/L/A/B12	LOUVERED SUPPLY
G19	500x300/ATGH/B/B12	DOOR TRANSFER GRILLE PAINT TO MATCH DOOR COLOUR
G20	150x125/610DAL/F/L/A/B15	LOUVERED SUPPLY
G21	300x300/620/F/L/A/B12	LOUVERED SUPPLY
G22	350x300/530D/F/L/A/B12	LOUVERED RETURN

REHEAT COIL SCHEDULE

TAG	EQUIPMENT SERVED	CAPACITY (KW)	EWT (°C)	LWT (°C)	FLOWRATE (L/S)	ΔP (kPa)	EAT (°C)	LAT (°C)	FLOWRATE (L/S)	ΔP (Pa)	WORKING FLUID
PHC-1	HRV-1	49	48.9	37.6	1.167	6.6	-40.0	0.7	991.0	32.4	50% PROPYLENE GLYCOL
PHC-2	HRV-2	5	48.9	37.4	0.120	10.8	-40.0	1.2	103.8	29.9	50% PROPYLENE GLYCOL
PHC-3	HRV-3	18	48.9	36.2	0.385	12.5	-35.6	-0.6	424.7	27.4	50% PROPYLENE GLYCOL
RHC-1	VAV-1	5	48.9	37.7	0.114	23.0	21.1	30.1	434.1	44.8	50% PROPYLENE GLYCOL
RHC-2	VAV-2	4	48.9	37.6	0.082	11.9	21.1	29.6	339.8	34.9	50% PROPYLENE GLYCOL
RHC-3	VAV-3	2	48.9	37.7	0.044	3.0	21.1	30.6	165.2	37.4	50% PROPYLENE GLYCOL
RHC-4	VAV-4	2	48.9	37.7	0.057	4.8	21.1	30.6	207.6	37.4	50% PROPYLENE GLYCOL
RHC-5	VAV-5	2	48.9	37.7	0.057	4.8	21.1	30.6	207.6	37.4	50% PROPYLENE GLYCOL
PHC-6	VAV-6	1	48.9	37.6	0.019	0.6	21.1	29.6	75.5	24.9	50% PROPYLENE GLYCOL
RHC-7	VAV-7	2	48.9	37.7	0.050	3.6	21.1	29.6	207.6	47.3	50% PROPYLENE GLYCOL
RHC-8	VAV-8	1	48.9	37.7	0.013	0.6	21.1	29.4	56.6	24.9	50% PROPYLENE GLYCOL
RHC-9	VAV-9	1	48.9	37.7	0.013	0.6	21.1	29.4	56.6	24.9	50% PROPYLENE GLYCOL
RHC-10	HRV-1	22	48.9	37.8	0.536	3.0	8.3	26.6	991.0	52.3	50% PROPYLENE GLYCOL
RHC-11	HRV-2	2	48.9	37.6	0.044	2.4	12.7	26.8	103.8	19.9	50% PROPYLENE GLYCOL
RHC-12	HRV-3	9	48.9	37.8	0.215	3.6	9.4	26.7	424.7	24.9	50% PROPYLENE GLYCOL

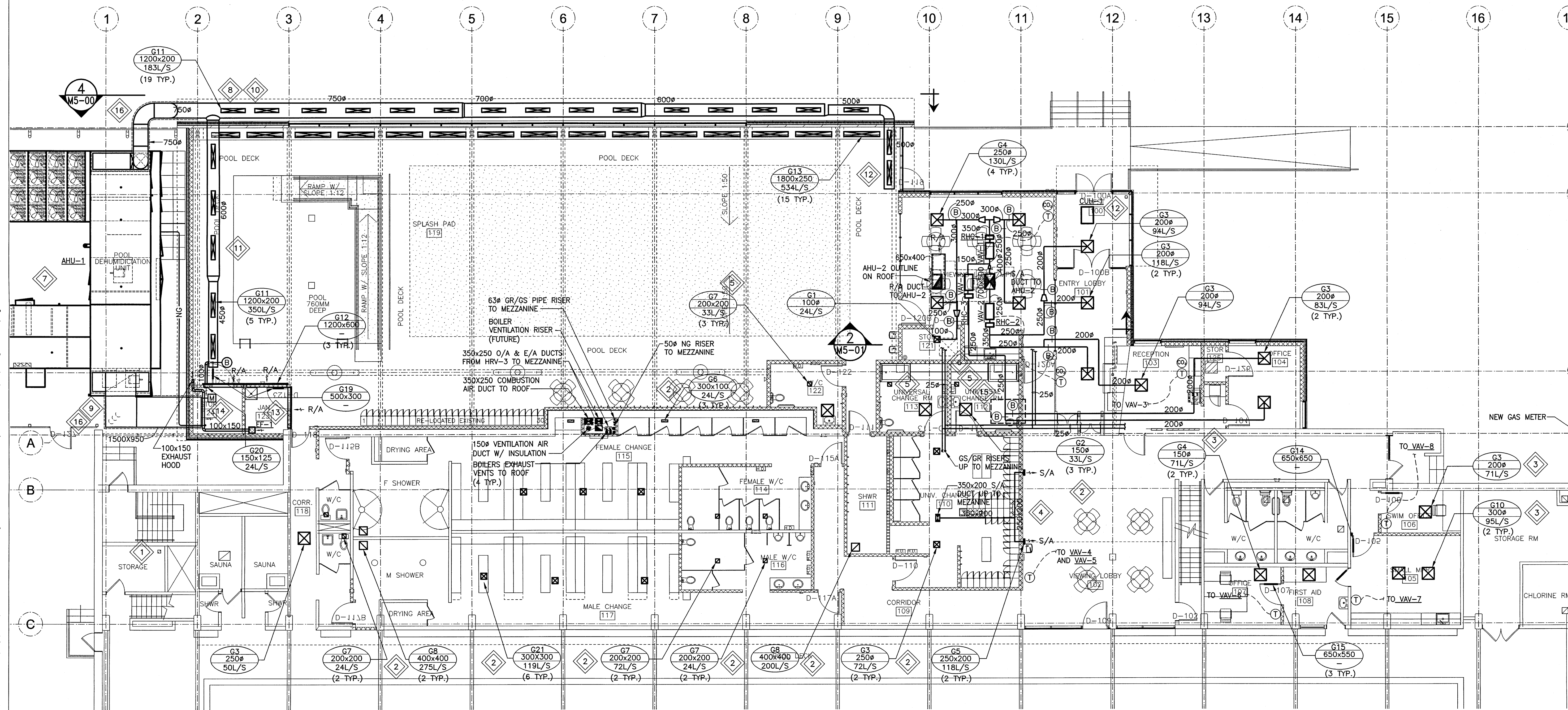
NOTE: HYDRONIC COILS DIMENSIONS (LxH) TO MATCH DUCT SIZE IT IS BEING INSTALLED IN.

KEYNOTES:

- RETAIN EXISTING GRILLE IN STORAGE ROOM.
- PROVIDE NEW GRILLES IN WASHROOM, CHANGE ROOMS AND SHOWERS. CREATE NEW/MODIFY EXISTING CEILING PENETRATIONS WHERE REQUIRED.
- PROVIDE NEW GRILLES IN OFFICE, FIRST AID, MPR AND SWIM OFFICE. CREATE NEW CEILING PENETRATIONS FOR DUCTWORK TO SUIT.
- RUN DUCTWORK FROM MEZZANINE THROUGH NEW FLOOR PENETRATION INTO CEILING SPACE ABOVE CHANGE ROOM TO NEW SIDEWALL GRILLES SERVING VIEWING LOBBY.
- PROVIDE NEW EXHAUST AND SUPPLY GRILLES IN NEW SPECIALTY CHANGE ROOMS AND WASHROOM.
- PROVIDE DUCTWORK, VAV BOXES, REHEAT COILS AND GRILLES FROM NEW ROOF TOP AIR HANDLING UNIT AHU-2.
- PROVIDE NEW DEHUMIDIFICATION UNIT AHU-1 OUTDOORS MOUNTED ON NEW CONCRETE PAD. RUN NEW SUPPLY DUCTS INTO POOL AREA AND CRAWLSPACE. REFER TO DRAWINGS M3-00 AND M5-00 FOR FURTHER DETAILS. ALL DRAINS WITHIN AHU-1 TO BE FACTORY PIPED TO OVERTOP THE CRAWLSPACE. CONTRACTOR TO ROUTE ALL DRAINS TO NEAREST DRAIN PIPING IN CRAWLSPACE.

NOTE: ALL INDOOR SUPPLY AIR DUCT IS THERMALLY INSULATED. REFER TO SPECIFICATIONS.

- PROVIDE NEW DUCTWORK AND GRILLES IN POOL AREA AS SHOWN. ALL EXPOSED DUCTWORK SHALL BE INSTALLED WITH A PVC JACKET. REFER TO DRAWINGS M3-00 AND M5-00 FOR FURTHER DETAILS.
- PROVIDE INSULATED RETURN DUCT CONNECTED TO CEILING PLENUM ABOVE STORAGE AND JANITOR ROOM. PROVIDE WALL LOUVRES IN WALL ABOVE ROOM 124 AND 125.
- LOCATE HIGH LEVEL POOL SUPPLY DUCT WITHIN WEB OF STRUCTURAL MEMBERS. INCREASE DUCT METAL GAUGE AND REINFORCING TO ACCOMMODATE A 4572 (15FT) SPAN. SUPPORT DUCTWORK AT COLUMNS ONLY. INTERMEDIATE SUPPORTS WILL NOT BE PERMITTED.
- LOCATE SUPPLY DUCT AT HIGH LEVEL BELOW WINDOW WITH GRILLES DIRECTED TOWARDS WINDOW.
- PROVIDE ONE GRILLE DIRECTED UP AND ONE GRILLE DIRECTED DOWN TO PROVIDE AIR ACROSS ENTIRE WINDOW AREA.
- HANG EXHAUST FAN FROM UNDERSIDE OF DRYWALL CEILING ON SPRING ISOLATORS. PROVIDE FLEX CONNECTION TO DUCTWORK.
- RUN DUCTWORK TIGHT TO WALL. INSULATE EXHAUST DUCTWORK FROM OUTSIDE WALL UP TO MOTORIZED DAMPER.
- ONE ACCESS DOOR SHALL BE PROVIDED TO SERVICE BOTH BALANCE DAMPERS.
- EXTERIOR DUCTWORK TO BE CLADDED PER DETAIL 3 ON DRAWING M5-02.
- PROVIDE HYDRONIC HEATER IN CEILING. COORDINATE WITH ARCHITECTURAL FOR FINAL PLACEMENT. ROUTE PIPING TOWARDS MPR AND INSTALL ALL VALVES IN MPR CEILING.



PRAIRIE ARCHITECTS INC.
 Creating Sustainable Futures
 300 - 141 Bannatyne Ave., Winnipeg, MB, R3B 0R3
 telephone 204.956.0938 fax 204.943.5597
 web www.prairiearchitects.ca

KGS GROUP
 CONSULTING ENGINEERS

Issue / rev.

0 2016/12/08 ISSUED FOR CONSTRUCTION
 # date issue notes

professional seals

PROFESSIONAL SEAL
CORDEN
 Member 30527
 Dec 7/16

project information

SEVEN OAKS POOL

444 Adsum Drive
 Winnipeg, MB
 Canada

client

City of Winnipeg
 4th Floor - 88 King Street
 Winnipeg, MB

drawing information

MECHANICAL MAIN FLOOR PLAN
 NEW HVAC

drawn by: RLR
 approved by: [Signature]
 scale: AS NOTED
 date issued: 2016.12.08
 proj. #: 14-1736-008
 rev. #: R-0

SCALE VERIFIED BY: [Signature]

APEGM
 Certificate of Authorization
 KGS Group
 No. 245

M3
01

File: P:\Projects\2014\14-1736-008\Draw\Mech\14-1736-008-M3-01.dwg - Tab: M3-01 Plotted By: dderoch 16/12/07 [Wed 3:44pm]