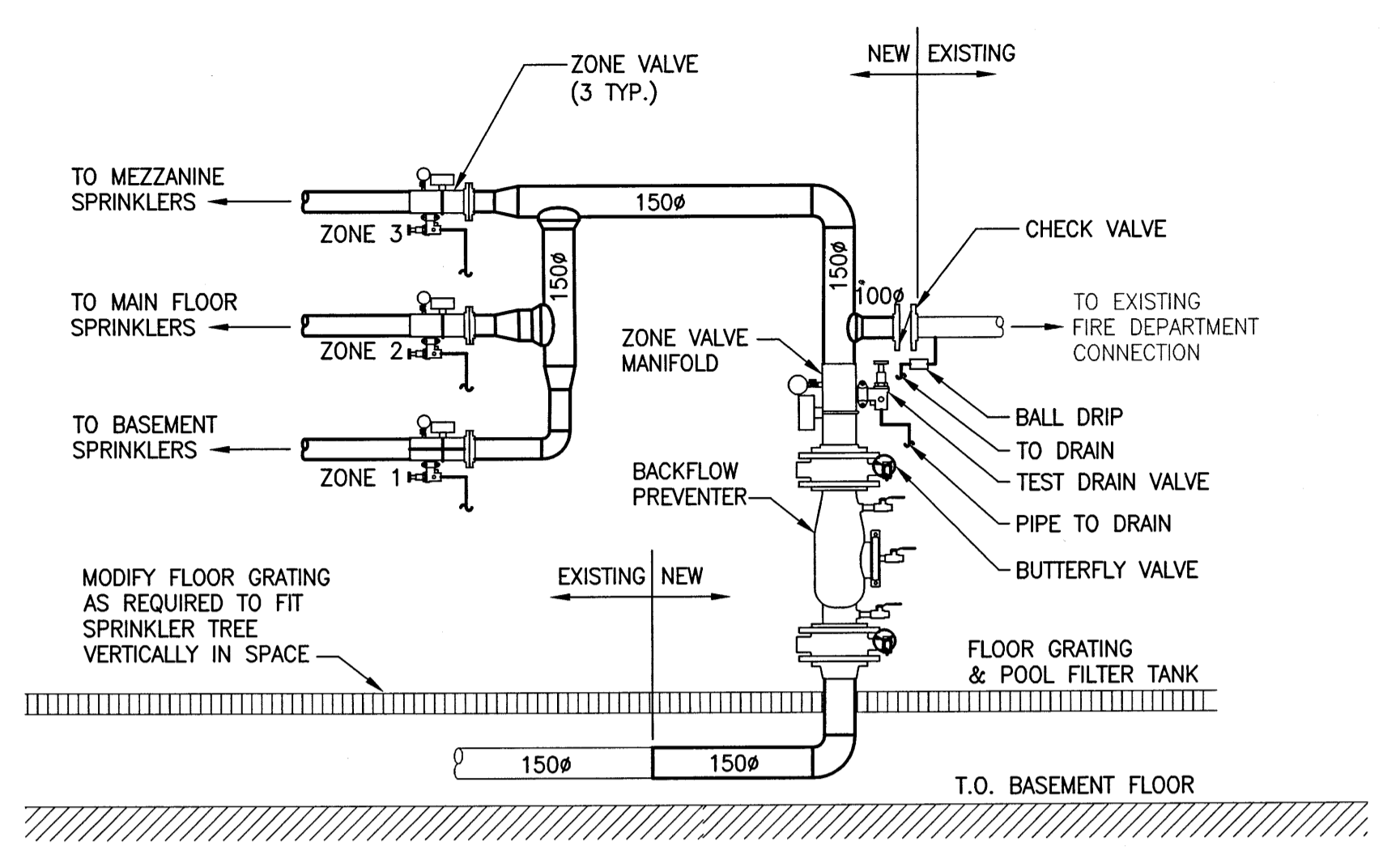
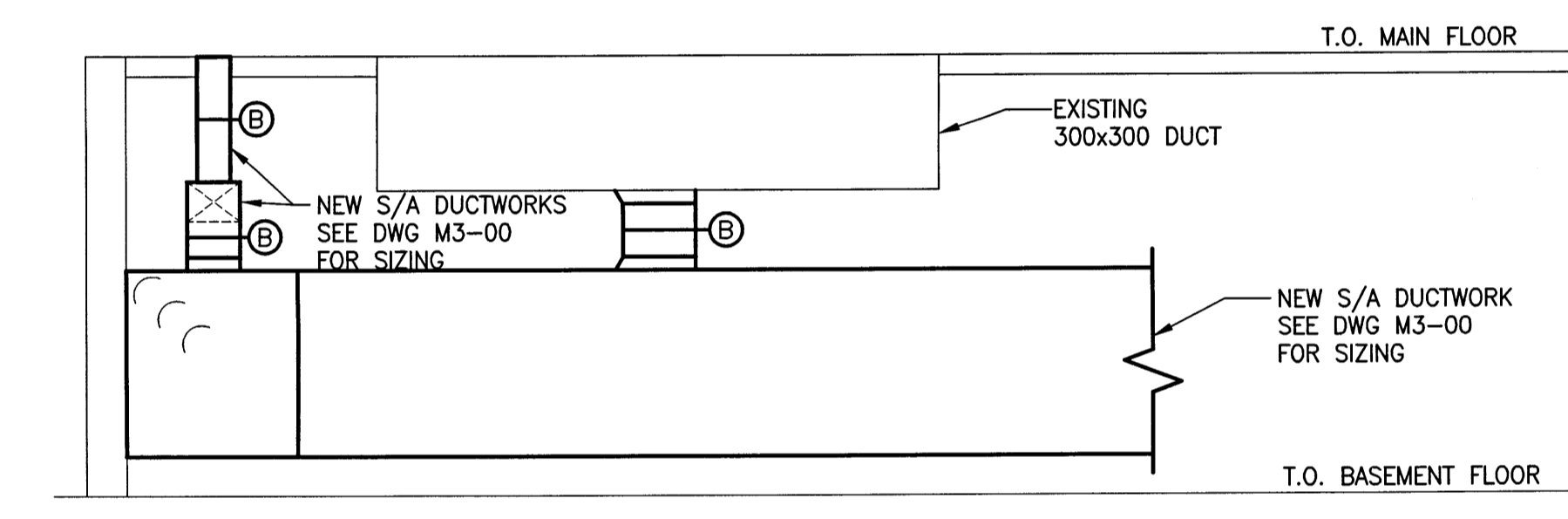


KEYNOTES:

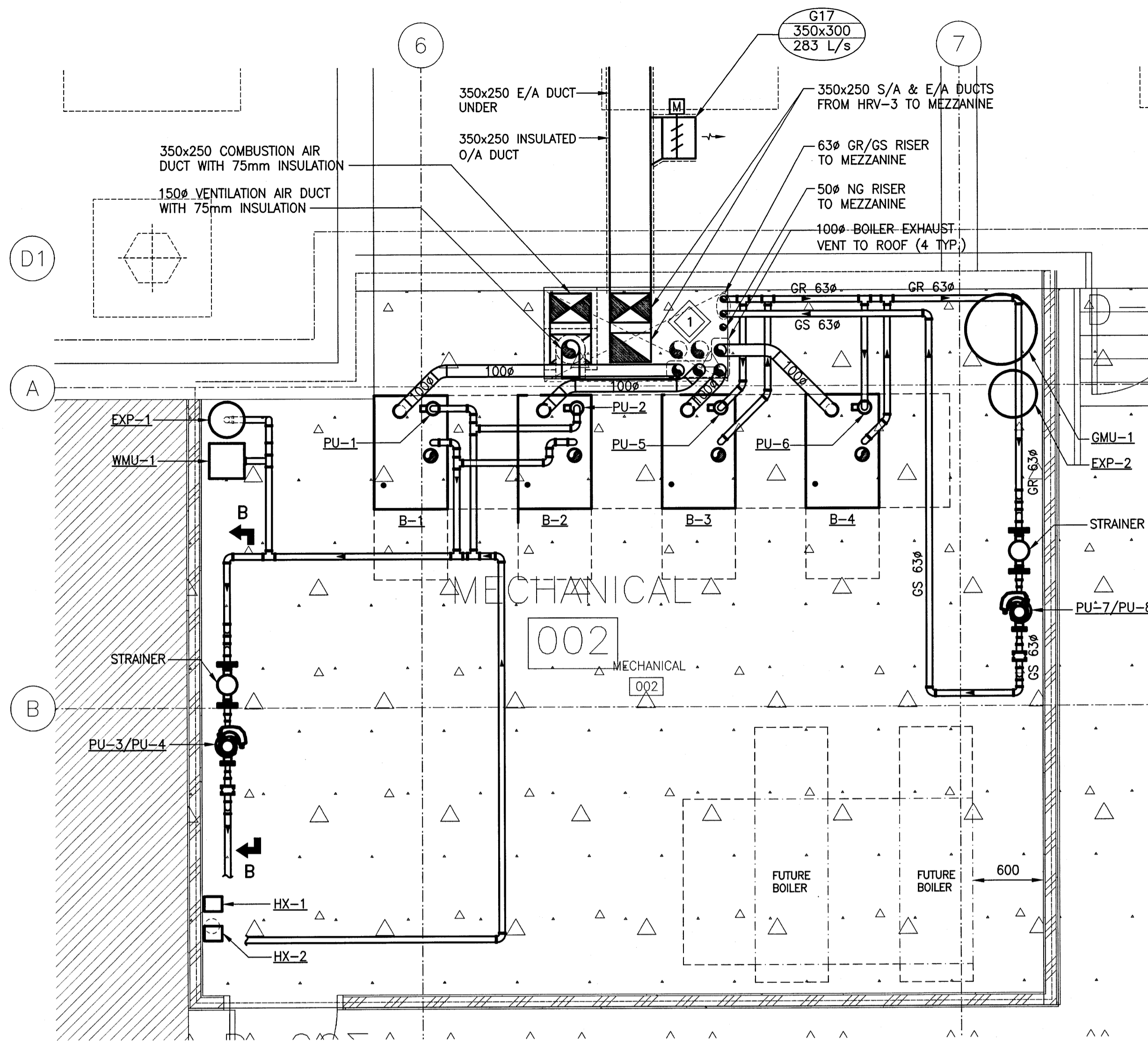
- 1 PROVIDE FUTURE VENT PIPES IN CHASE FOR CONNECTION TO FUTURE BOILER. CAP VENT PIPING AT TOP AND BOTTOM OF CHASE.



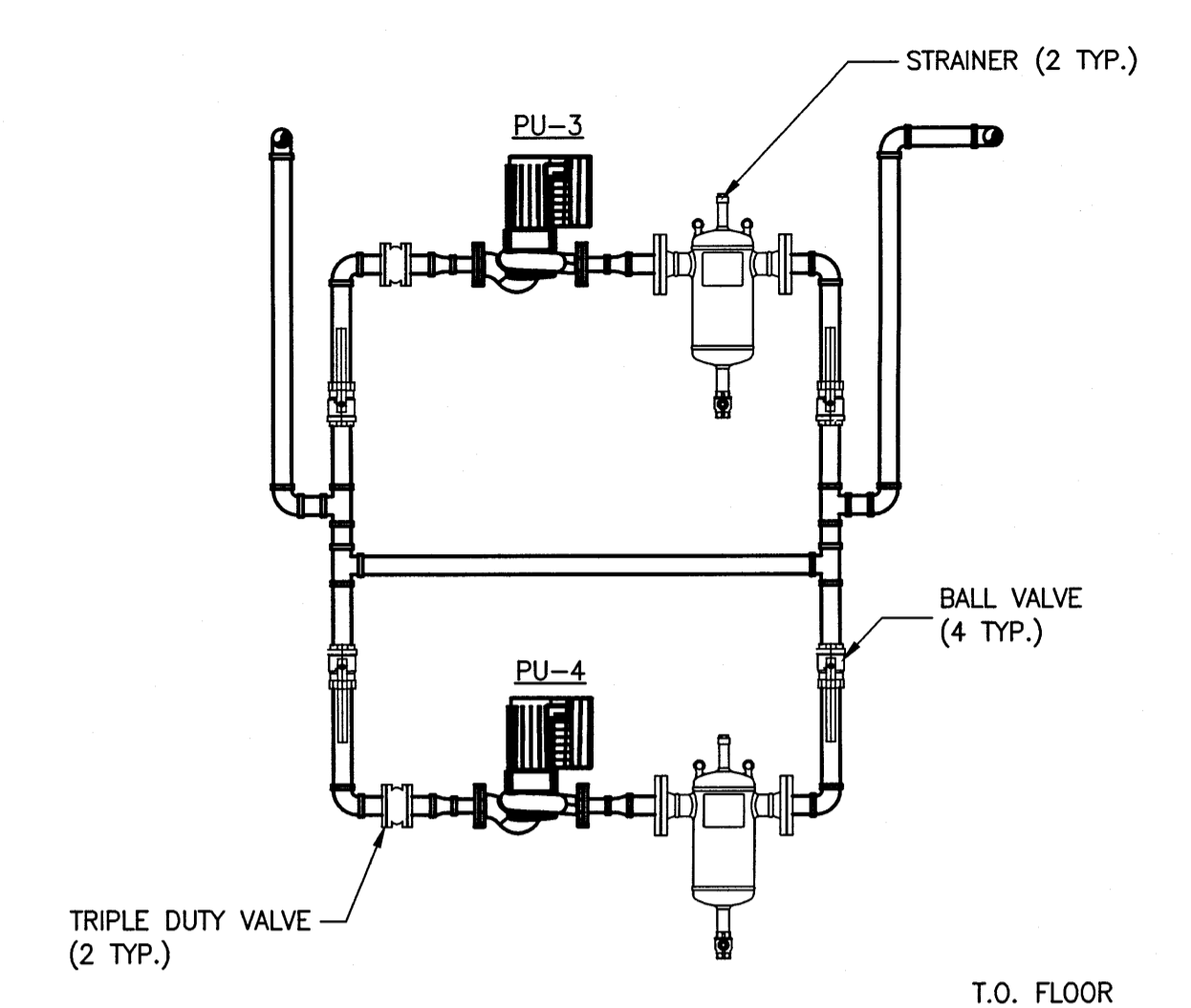
1 SPRINKLER TREE - DETAIL
M4-00 SCALE: N.T.S.



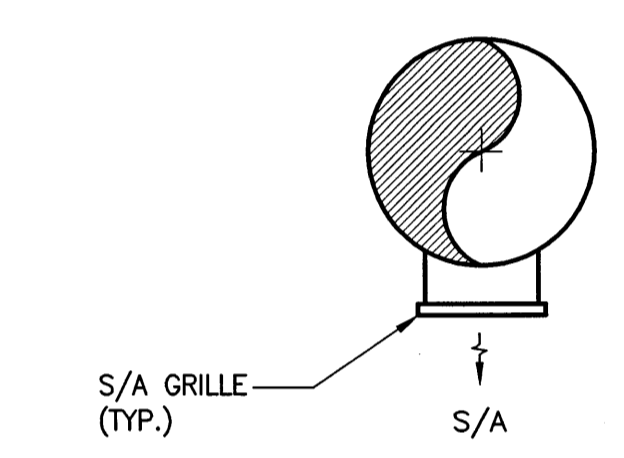
3 NEW DUCTWORK AND HEATING COIL - DETAIL
M3-00 SCALE: N.T.S.



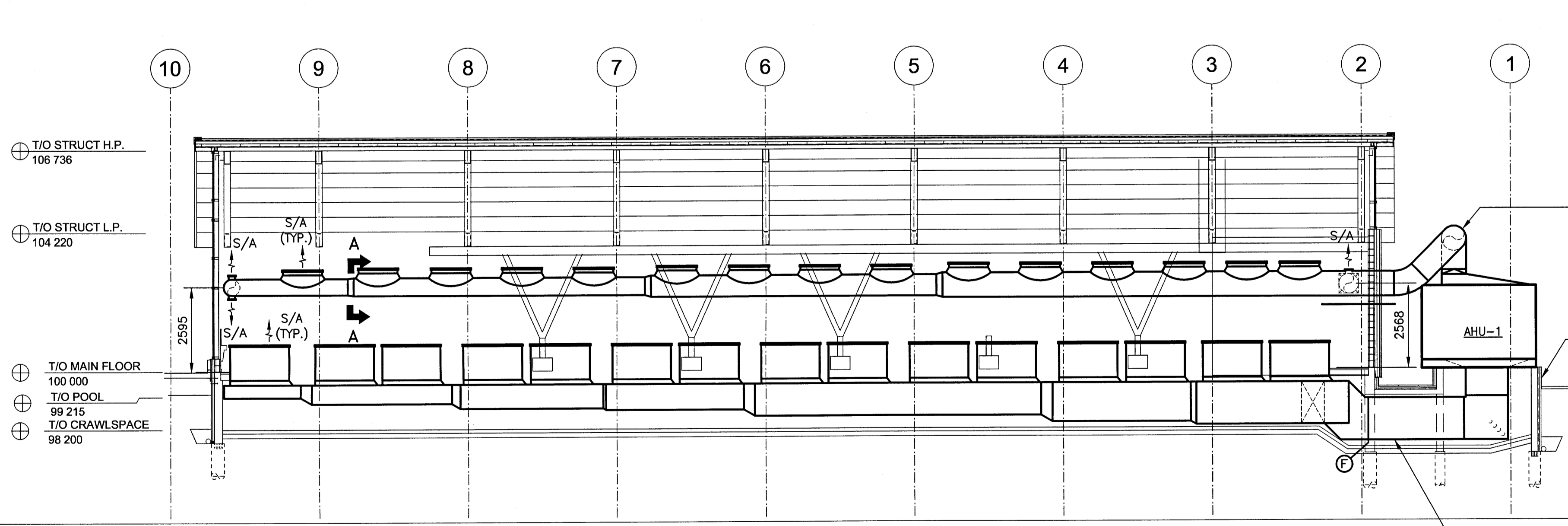
2 MECHANICAL ROOM ENLARGE PLAN
M3-00 SCALE: N.T.S.



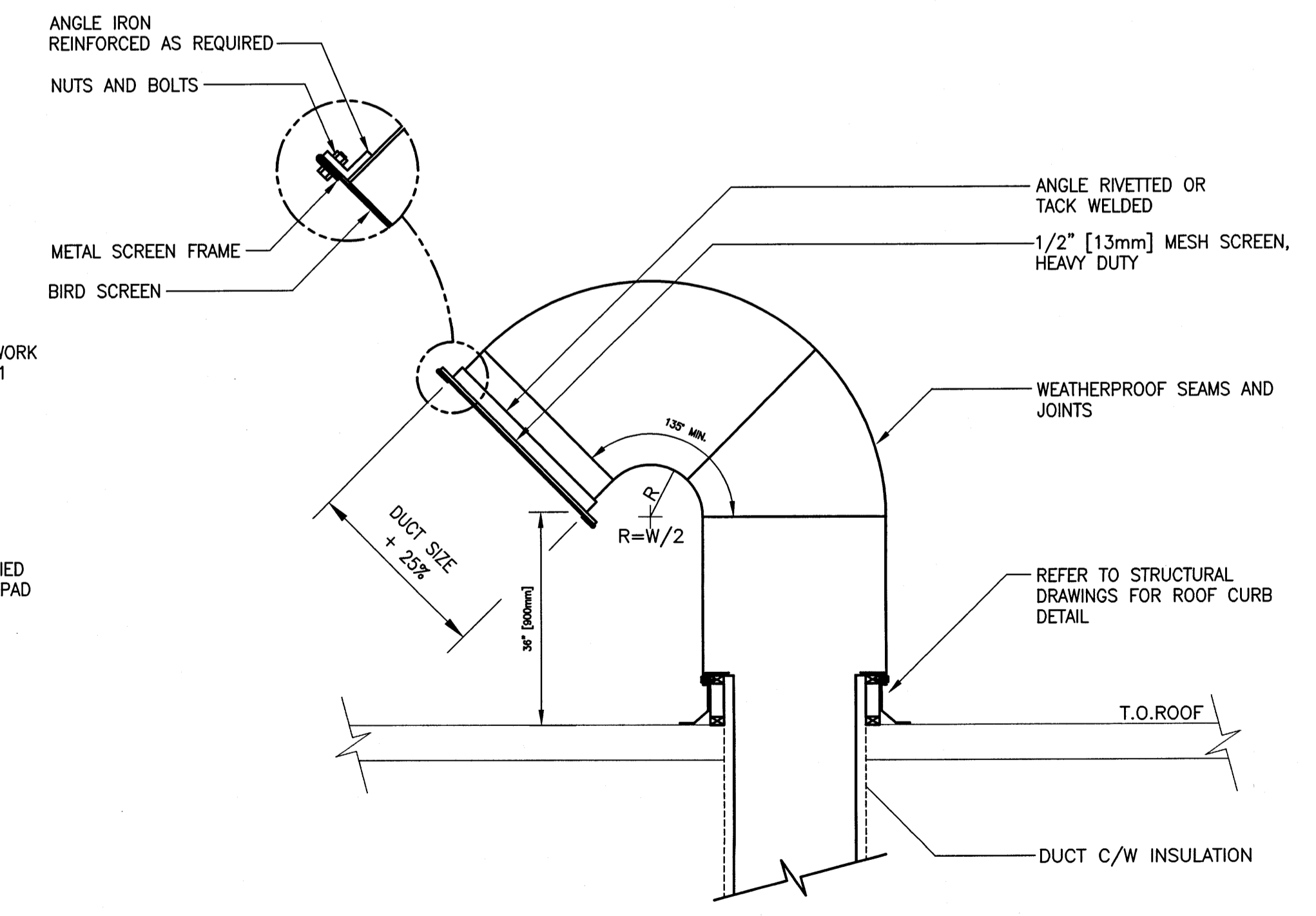
POOL WATER PUMP - SECTION B-B
SCALE: N.T.S.



DUCT TAKE OFF - SECTION A-A
SCALE: N.T.S.

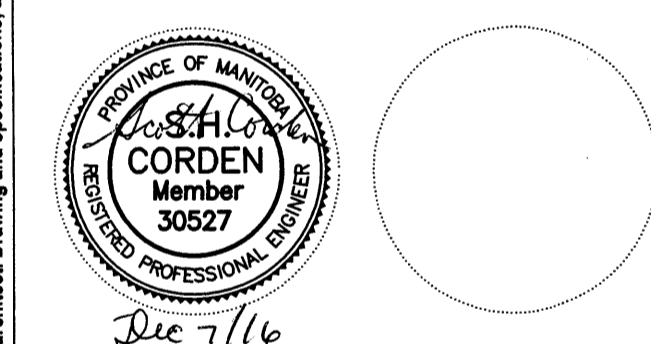


4 AHU-1 AND DUCTWORK - DETAIL
M3-00 SCALE: N.T.S.



5 GOOSENECK HOOD DETAIL
SCALE: N.T.S.

Issue / rev.	date	issue notes
0	2016/12/08	ISSUED FOR CONSTRUCTION
#	date	issue notes



project information

SEVEN OAKS POOL
444 Adsum Drive
Winnipeg, MB
Canada

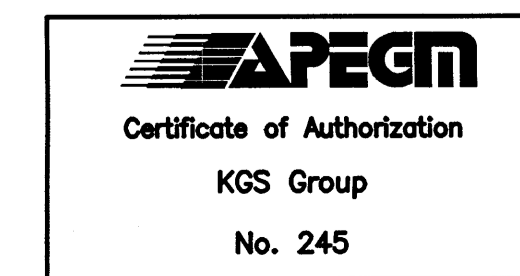
client

City of Winnipeg
4th Floor - 86 King Street
Winnipeg, MB

drawing information

MECHANICAL SECTIONS AND DETAILS

drawn by: RLR
approved by: [Signature]
scale: AS NOTED
date issued: 2016.12.08
proj. #: 14-1736-008
rev. #: R-0



M5
00

File Name: P:\Projects\2014\14-1736-008\Drawg\Mech\14-1736-008_M5-00.dwg - Tab: M5-00 Plotted By: adroche 16/12/07 [Wed 3:42pm]

This drawing must not be scaled. The contractor shall verify all dimensions and other data on site prior to commencement of work. All discrepancies, errors, and omissions are to be reported to the architect. Drawing and specifications, as instruments of service, are the property of the architect. The copyright in the same being reserved to him. No reproduction may be made without the permission of the architect, and when made, must bear his name. All prints to be returned to the architect on request.