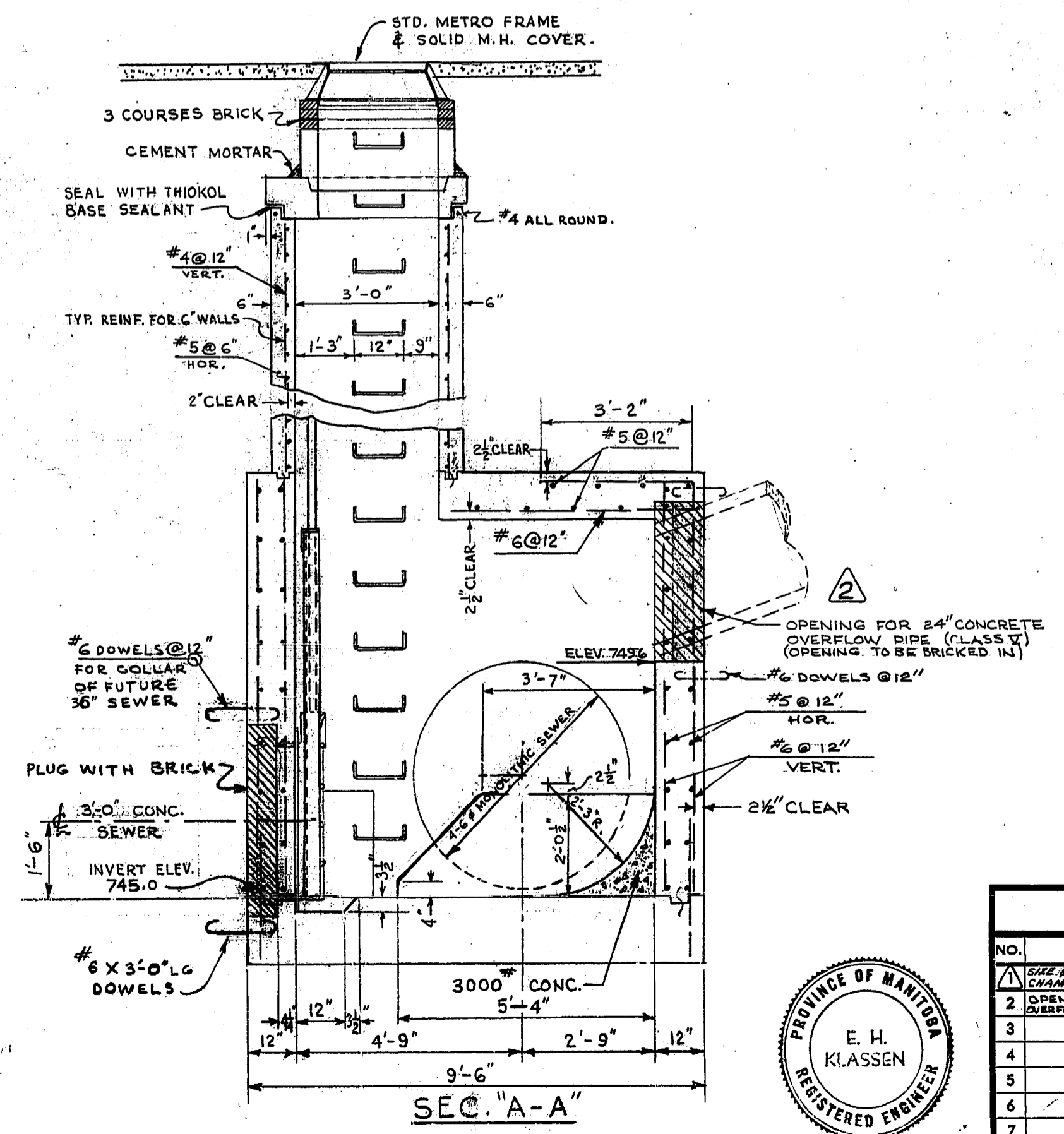
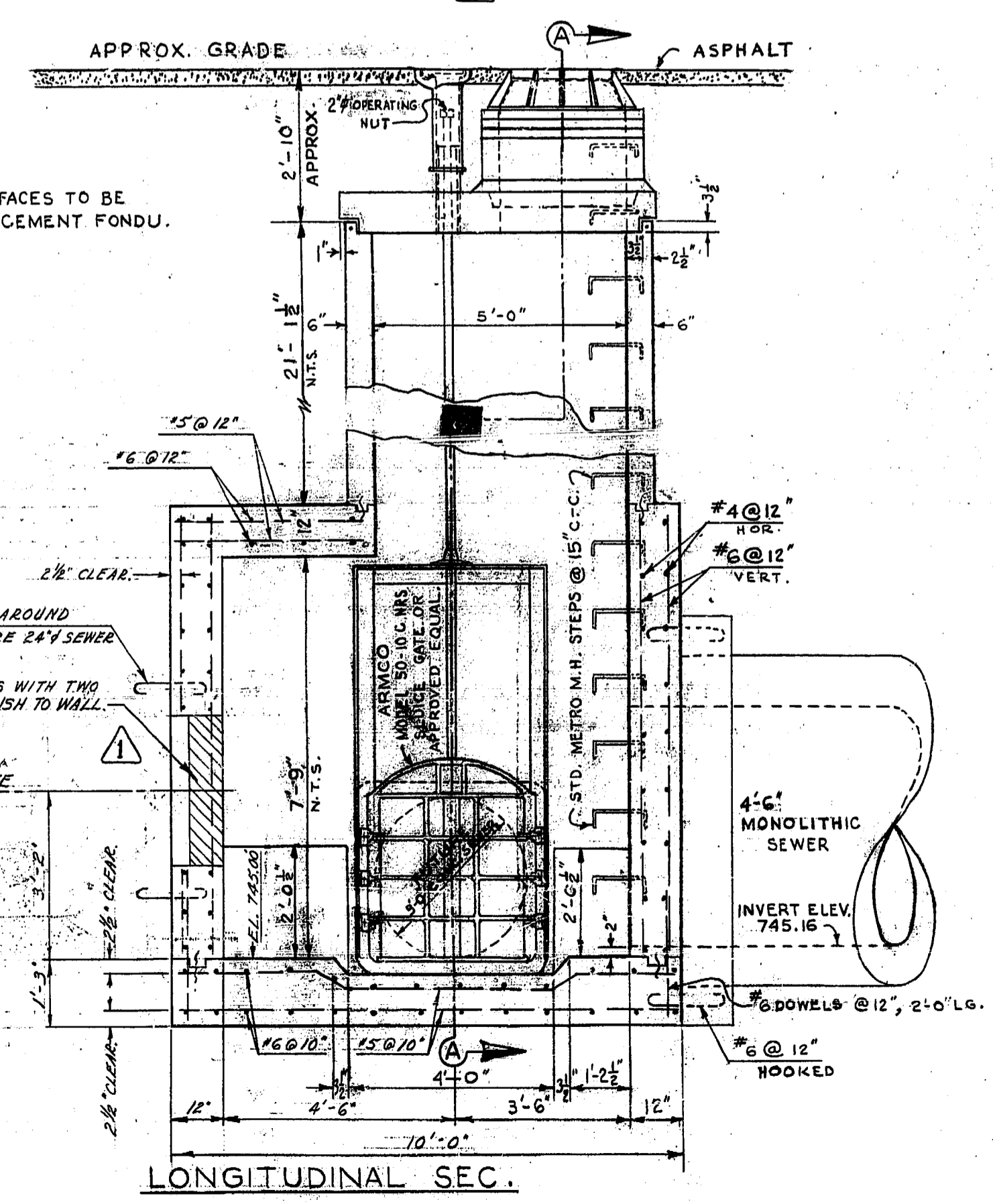


NOTE:
ALL INTERIOR SURFACES TO BE
COATED WITH 1/2" CEMENT FONDU.



NOTE:
PLUG OPENINGS WITH TWO
LAYERS OF BRICK FLUSH TO WALL.



REVISIONS				THE METROPOLITAN CORPORATION OF GREATER WINNIPEG WATERWORKS & WASTE DISPOSAL DIVISION SEWAGE DISPOSAL BRANCH	
NO.	DESCRIPTION	DATE	BY		
1	SIZE & LOCATION OF VAVES AND CHAMBER DIMENSIONS CHANGED	12 MAR 54	J.M.M.S.		
2	OPENING FOR 24" CONC. PIPE OVERFLOW ADDED	5 JULY 54	K.H.B.		
3					
4					
5					
6					
7					
8					

APPROVED BY <i>[Signature]</i> CHIEF ENGINEER	DESIGNED BY E. H. KLASSEN	CHECKED BY <i>[Signature]</i> DATE 15 JAN. 1965	DRAWING NO. 358
---	------------------------------	--	---------------------------