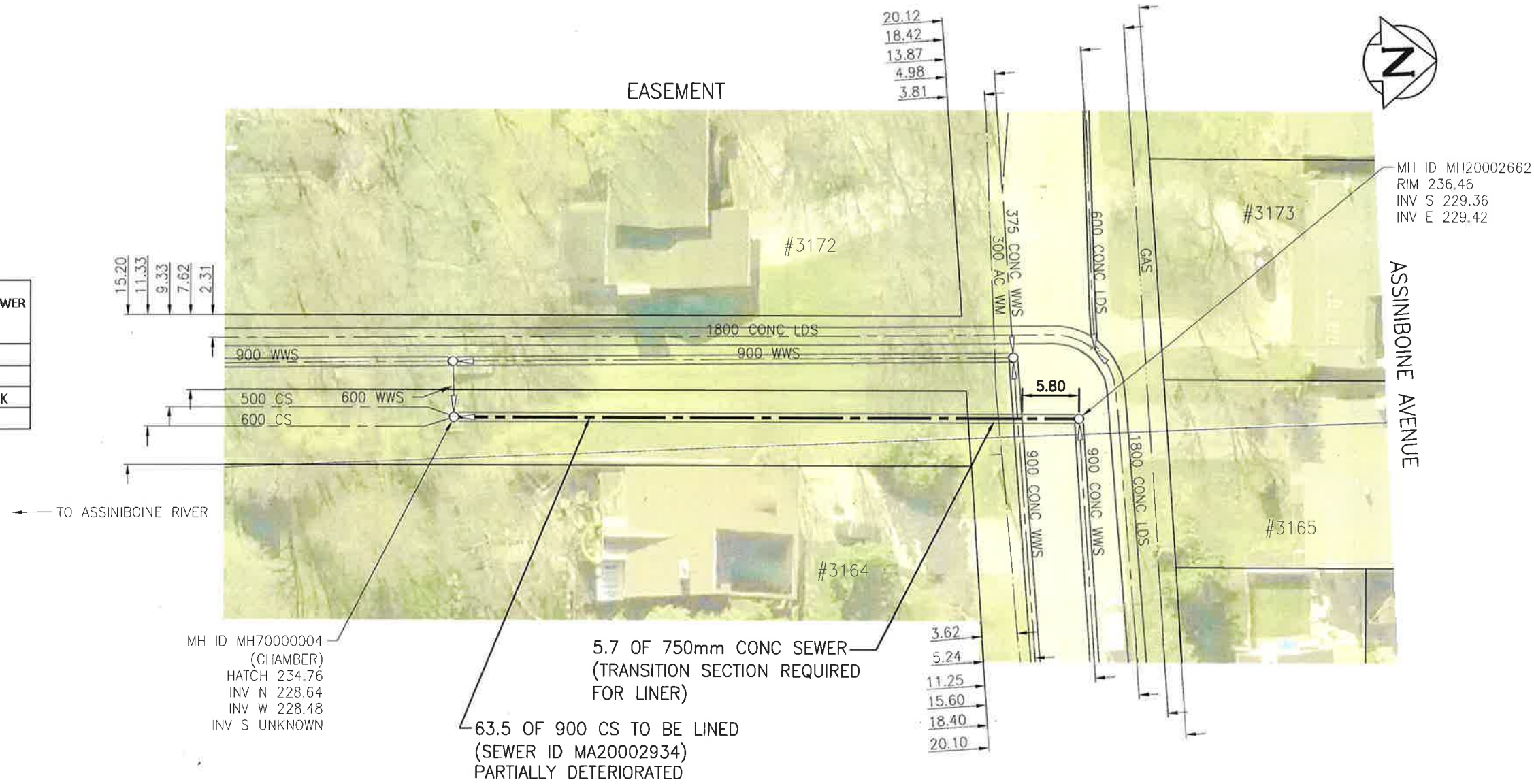


V:\1112\active\111216320\0300_drawing\0302_sheet_files\02_civil\16320c-101-894.dwg

SEWER JUNCTION INFORMATION FROM SEWER VIDEO INSPECTION		
SEWER ID S-MA20002934		
DISTANCE FROM MH20002662		
DISTANCE	DIAMETER	CLOCK
NO SERVICE JUNCTIONS		



WARNING

IF POWER EQUIPMENT OR EXPLOSIVES ARE TO BE USED FOR EXCAVATION ON THIS PROJECT THE CONTRACTOR MUST:

- 1) NOTIFY THE GAS COMPANY OF THE PROPOSED LOCATION OF EXCAVATION.
- 2) TAKE PRECAUTION TO AVOID DAMAGE TO GAS COMPANY INSTALLATIONS.

SEE PROVINCIAL REGULATION 140/92 FOR DETAILS

APEGM
 Certificate of Authorization
 Stantec Consulting Ltd.
 No. 1301

METRIC
 WHOLE NUMBERS INDICATE MILLIMETRES
 DECIMALIZED NUMBERS INDICATE METRES

1:500

BID OPPORTUNITY NO. 1083-2016

LOCATION APPROVED UNDERGROUND STRUCTURES

SUPV. U/G STRUCTURES COMMITTEE	DATE

NOTE:
 LOCATION OF UNDERGROUND STRUCTURES AS SHOWN ARE BASED ON THE BEST INFORMATION AVAILABLE BUT NO GUARANTEE IS GIVEN THAT ALL EXISTING UTILITIES ARE SHOWN OR THAT THE GIVEN LOCATIONS ARE EXACT. CONFIRMATION OF EXISTENCE AND EXACT LOCATION OF ALL SERVICES MUST BE OBTAINED FROM THE INDIVIDUAL UTILITIES BEFORE PROCEEDING WITH CONSTRUCTION.

NO.	REVISIONS	DATE	BY

Stantec
 905 Waverley Street, Winnipeg, Manitoba
 Tel 204-489-5900 Fax 204-453-9012

DESIGNED BY: JH	CHECKED BY: CD
DRAWN BY: SC	APPROVED BY: RS
HOR. SCALE: 1:500	RELEASED FOR CONSTRUCTION:
VERTICAL:	

DATE: 2016.11.11 DATE: Feb. 28/17

ENGINEER'S SEAL

CONSULTANT DRAWING NO. C-101

THE CITY OF WINNIPEG
WATER AND WASTE DEPARTMENT

2016 SEWER RENEWALS BY CIPP LINING
 CONTRACT 2
ASSINIBOINE AVENUE
 MH AT ASSINIBOINE AV TO
 1ST MH S OF ASSISBOINE AV

SHEET 2 OF 25
CAD FILE DRAWING NUMBER 16320c101-894
CITY DRAWING NUMBER 11356