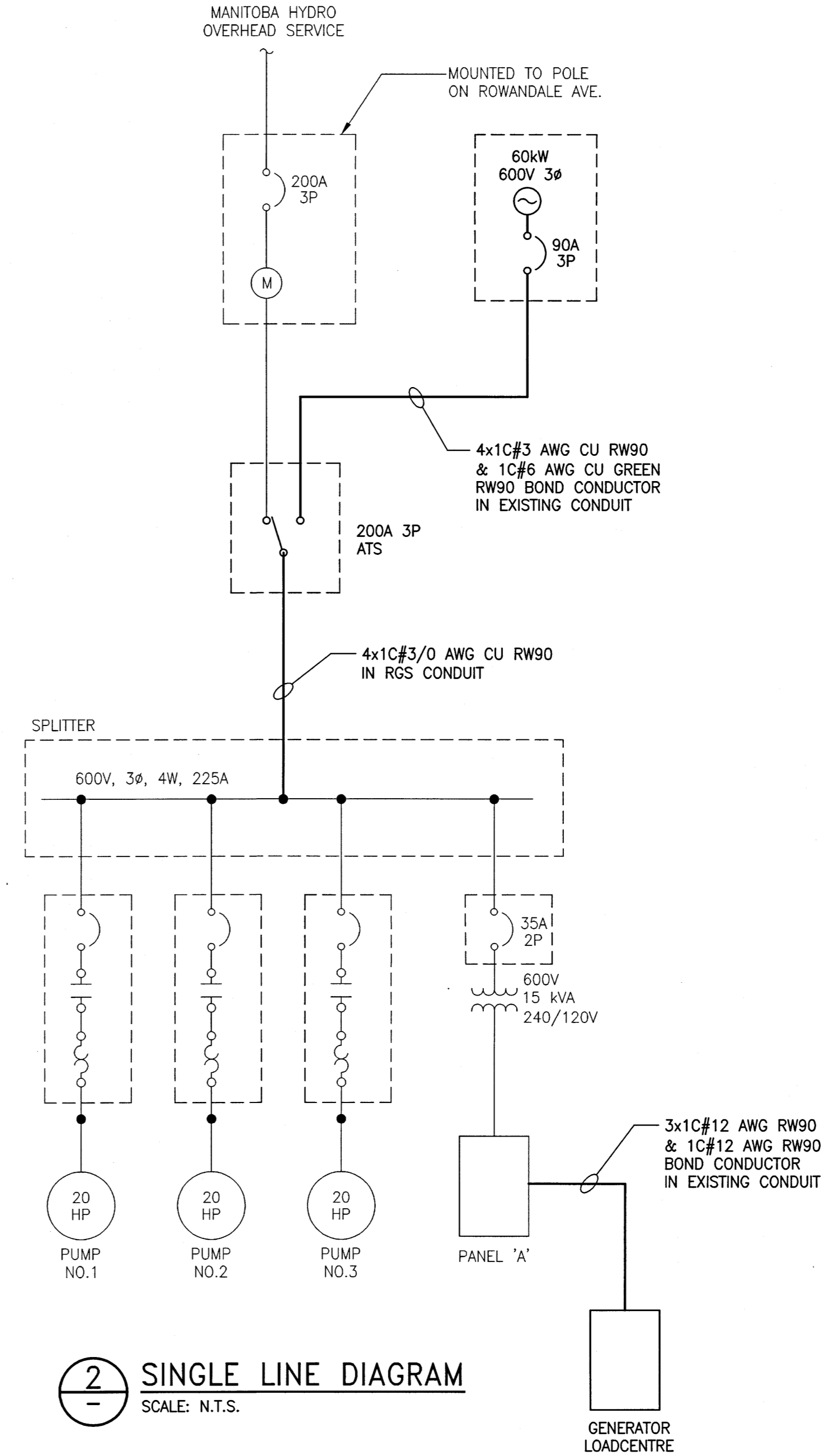


1 MOTOR ROOM FLOOR PLAN
 SCALE: 1:20mm (24"x36")



2 SINGLE LINE DIAGRAM
 SCALE: N.T.S.

- NOTES:**
- GREY ITEMS DENOTES EXISTING EQUIPMENT NOT INCLUDED IN SCOPE.
 - PROVIDE NEW TRANSFER SWITCH.
 - PROVIDE NEW WIRING TO THE GENERATOR INCLUDING GENERATOR POWER CONDUCTORS, CONTROL WIRING, AND POWER SUPPLY TO THE GENERATOR LOADCENTRE. REUSE EXISTING CONDUITS RUN IN FLOOR AND ROUTE WIRING ON GENERATOR SKID AS REQUIRED.
 - PROVIDE COOLING STAT AND MODIFY CONTROLS OF EXHAUST FAN TO START FAN WHEN TEMPERATURE IN MOTOR ROOM REACHES 25°C AND ABOVE OR WHEN THE GENERATOR IS IN OPERATION.
 - THE COMBUSTIBLE GAS DETECTOR SHALL BE DRAGER POLYTRON 5100 OR APPROVED EQUIVALENT WITH A REMOTE MOUNTED CH4 GAS SENSOR AND 3 OUTPUT RELAYS WIRED TO GAS DETECTION CONTROL PANEL. SENSOR SHALL BE MOUNTED NEAR CEILING.
 - THE CARBON MONOXIDE (CO) DETECTOR SHALL BE DRAGER POLYTRON 5100 OR APPROVED EQUIVALENT WITH CO GAS SENSOR, AND 3 OUTPUT RELAYS WIRED TO GAS DETECTION CONTROL PANEL. DETECTOR SHALL BE MOUNTED ON WALL 1.4m AFF.
 - THE GAS DETECTION CONTROL PANEL SHALL BE A DRAGER REMOTE ALARM STATION OR APPROVED EQUIVALENT, WITH NEMA 4X ENCLOSURE, 120VAC INPUT, 24VDC POWER SUPPLY FOR GAS DETECTORS, ALARM ACKNOWLEDGE BUTTON, ALARM STROBE LIGHT AND HORN, AND PROVIDE ONE COMMON ALARM SIGNAL TO THE EXISTING RTU PANEL VIA DRY CONTACT OUTPUT.

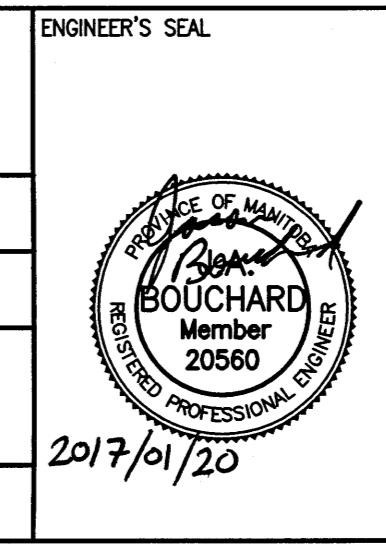
- LEGEND:**
- ☒ FIELD DEVICE
 - ⊙ THERMOSTAT



B.M.	-	
ELEV.	-	
DESIGNED BY:	J. BOUCHARD	
CHECKED BY:	<i>J. Bouchard</i>	
DRAWN BY:	S. GUSE	
APPROVED BY:	<i>S. Guse</i>	
SCALE:	AS NOTED	
DATE:	2016/11/16	
ISSUED FOR CONSTRUCTION	2017/01/20	
NO. REVISIONS	DATE	DESIGN CHECK

KGS GROUP
 CONSULTING ENGINEERS

CONSULTANT NO.: 16-0107-025_E02



THE CITY OF WINNIPEG
 WATER AND WASTE DEPARTMENT

LARCHDALE FLOOD PUMP STATION
 GENERATOR REPLACEMENT PROJECT
 ELECTRICAL
 NEW EQUIPMENT PLAN

CITY DRAWING NUMBER: 1-0153F-E0002-001
 SHEET: 00
 REV: A1
 SIZE: A1