

PRELIMINARY
NOT TO BE USED FOR CONSTRUCTION

CONSTRUCTION NOTES
1) ALL STREET RADIUS CURB UNDER 15M RADIUS SHALL BE REPLACED AS MODIFIED OR AS DIRECTED BY THE CONTRACT ADMINISTRATOR.
2) TAKE PRECAUTION TO AVOID DAMAGE TO GAS UTILITY INSTALLATIONS.
3) INSTALL DETECTABLE WARNING SURFACE TILES AT CURB RAMP AS PER CW 3326

WARNING
IF POWER EQUIPMENT OR EXPLOSIVES ARE TO BE USED FOR EXCAVATION ON THIS PROJECT THE CONTRACTOR MUST:
1) OBTAIN CLEARANCE FROM THE GAS UTILITY PRIOR TO EXCAVATION.
2) TAKE PRECAUTION TO AVOID DAMAGE TO GAS UTILITY INSTALLATIONS.
SEE PROVINCIAL REGULATION 210/72 FOR DETAILS

METRIC
WHOLE NUMBERS INDICATE MILLIMETRES
DECIMALIZED NUMBERS INDICATE METRES

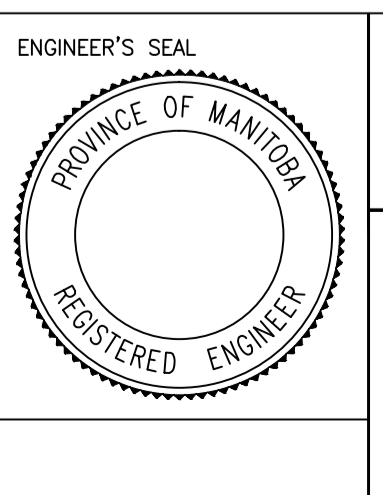
BID OPPORTUNITY NO. 12-2016

◇	HYDRANT	◆	---	LDS/WWS	▨	SIDWALK BLOCKS	▨	LOCATION APPROVED	B.M. ELEV.	IB	ENGINEERING DIVISION	ENGINEER'S SEAL	THE CITY OF WINNIPEG PUBLIC WORKS DEPARTMENT	LOGAN AVENUE FROM KEEWATIN STREET TO BLAKE STREET CONCRETE RECONSTRUCTION AND ASSOCIATED WORKS FROM STA. 1+00 TO STA. 2+50	CITY DRAWING NUMBER P-3473-01 SHEET 1 OF 5
⊕	VALVE	●	---	WATERMAIN	▨	PAVING STONES	▨	UNDERGROUND STRUCTURES	232.448	1648 LOGAN	TECHNOLOGY SERVICES BRANCH	PROVINCE OF MANITOBA REGISTERED ENGINEER			
⊙	CURB STOP	●	---	GAS	▨	ASPHALT OVERLAY	▨				106 - 1155 PACIFIC AVE				
▬	CONCRETE SIDWALK	●	---	HYDRO/STREET LIGHTS	▨	FENCE	▨								
○	O.L.S.	●	---	CONCRETE	▨	SOD	▨								
○	MANHOLE	●	---	CURB RENEWAL	▨	EXISTING	▨								
△	CATCH BASIN	●	---	ELEVATIONS	231.000	LEGEND - PLAN	▨								
△	CURB INLET	●	---	PROPERTY LINE	---	NORTH GUTTER	---								
☆	HYDRO POLE	●	---	SURVEY BAR	---	CENTER LINE	---								
⊙	TRAFFIC SIGNAL POLE	●	---	GEODETIC BENCH MARK	---	SOUTH GUTTER	---								
⊙	MMA MARKINGS	---	---	RAMP CURB	---	NORTH SIDWALK	---								
---	EXISTING	---	---	LEGEND - PLAN	---	SOUTH SIDWALK	---								
---	LEGEND - PLAN	---	---	LEGEND - PLAN	---	LEGEND - PROFILE	---								
---	PROPOSED	---	---	PROPOSED	---	PROPOSED	---								
---	EXISTING	---	---	EXISTING	---	EXISTING	---								
---	PROPOSED	---	---	PROPOSED	---	PROPOSED	---								

NOTE:
LOCATION OF UNDERGROUND STRUCTURES AS SHOWN ARE BASED ON THE BEST INFORMATION AVAILABLE, BUT NO GUARANTEE IS GIVEN THAT ALL EXISTING UTILITIES ARE SHOWN OR THAT THE GIVEN LOCATIONS ARE EXACT. CONFIRMATION OF EXISTENCE AND EXACT LOCATION OF ALL SERVICES MUST BE OBTAINED FROM THE INDIVIDUAL UTILITIES BEFORE PROCEEDING WITH CONSTRUCTION.

2	SUBMIT FOR ENGINEERS APPROVAL	05/02/16	E.H.		
1	ISSUED FOR PLAN APPROVAL	04/11/16	E.H.		
NO.	REVISIONS	DATE	BY		

DESIGNED BY	E.H. & M.D.	CHECKED BY	
DRAWN BY	E.H. & M.D.	APPROVED BY	
HOR. SCALE:	1 : 250		
VERTICAL:	1 : 10		
DATE	2016/05/02		



THE CITY OF WINNIPEG
PUBLIC WORKS DEPARTMENT

LOGAN AVENUE
FROM KEEWATIN STREET TO BLAKE STREET
CONCRETE RECONSTRUCTION AND ASSOCIATED WORKS
FROM STA. 1+00 TO STA. 2+50

CITY DRAWING NUMBER
P-3473-01
SHEET 1 OF 5

1