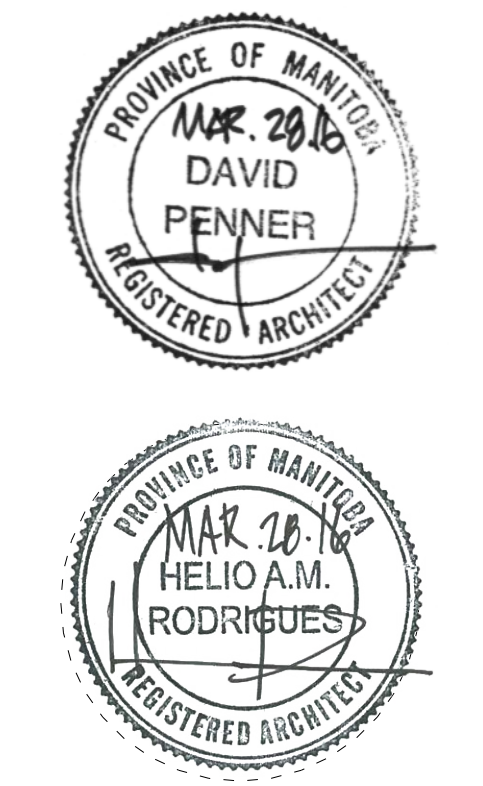


LEGEND
Refer to M&E for specifications and installation requirements.

○ large pendant LED fixture, install flush with u/s of space frame	□ flush ceiling diffuser
○ small pendant LED fixture, downlight optic, flush with u/s of space frame	□ flush ceiling return grille
○ small pendant LED fixture, wallwash optic direct as indicated, flush with u/s of space frame	□ ceiling exhaust vent
— linear LED fixture, ceiling mount u/n	□ fire alarm pull station
— exterior linear LED fixture, mount to u/s of canopy	□ fire alarm strobe, ceiling mount u/n
— wall mount LED fixture	□ fire alarm horn & strobe, ceiling mount u/n
□ square recessed LED fixture	□ emergency lighting, ceiling mount
□ rectangular recessed LED fixture	□ emergency lighting, wall mount
⊙ speaker	□ exit sign
⊙ detector, see elec for type	⊙ duress strobe
	⊙ light sensor

1
a103
reflected ceiling plan
1/8"=1'-0"
N

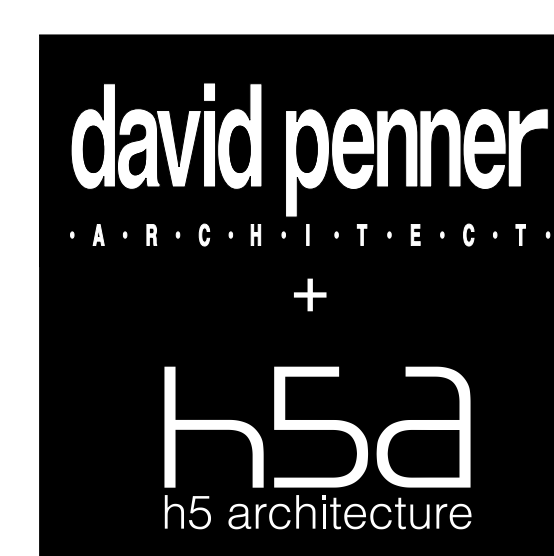


Issued for Construction: March 28, 2016

NOTES:
THIS DRAWING IS THE EXCLUSIVE PROPERTY OF HIS ARCHITECTURE AND DAVID PENNER ARCHITECT AND MAY NOT BE REPRODUCED AND/OR USED IN ANY MANNER WITHOUT THEIR EXPRESSED WRITTEN PERMISSION. THE GENERAL CONTRACTOR AND MATERIALS SUPPLIER/S SHALL CHECK ALL DIMENSIONS AND INFORMATION ON THIS DRAWING AND REPORT ANY DISCREPANCIES PRIOR TO COMMENCEMENT OF WORK. DO NOT SCALE THIS DRAWING.



CITY OF WINNIPEG - PLANNING, PROPERTY & DEVELOPMENT DEPARTMENT
MUNICIPAL ACCOMMODATIONS DIVISION
3rd FLOOR - 65 GARRY ST., WPG, R3C 4K4



David Penner, 204.475.8978
Helio Rodrigues, 204.774.0012
120 Yale Avenue, Winnipeg, MB, R3M 0L7

PROJECT
Windsor Park Library
ADDRESS
1201 Archibald Street

DATE
March 28, 2016
SCALE
as noted

reflected ceiling plan
a.103