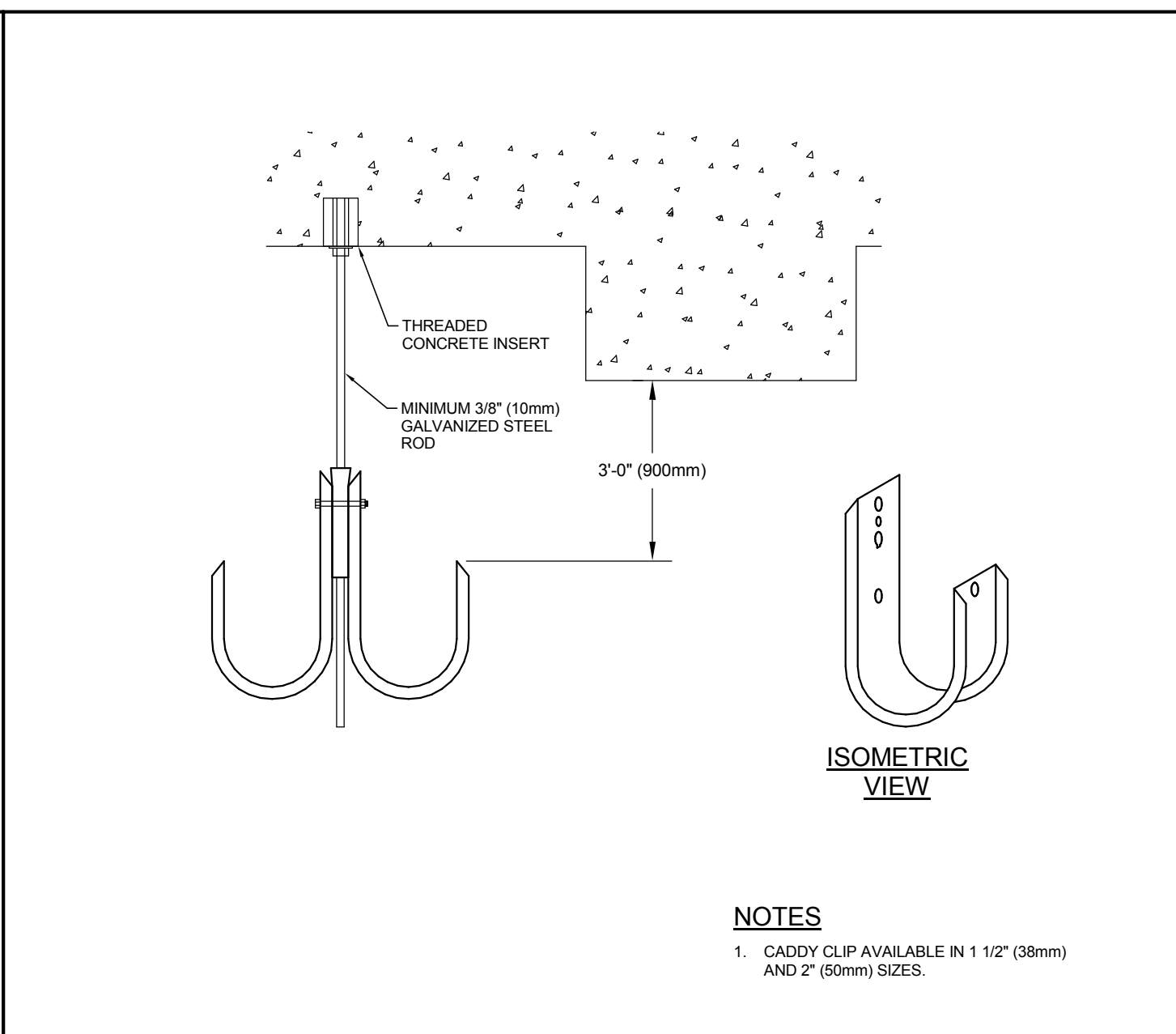
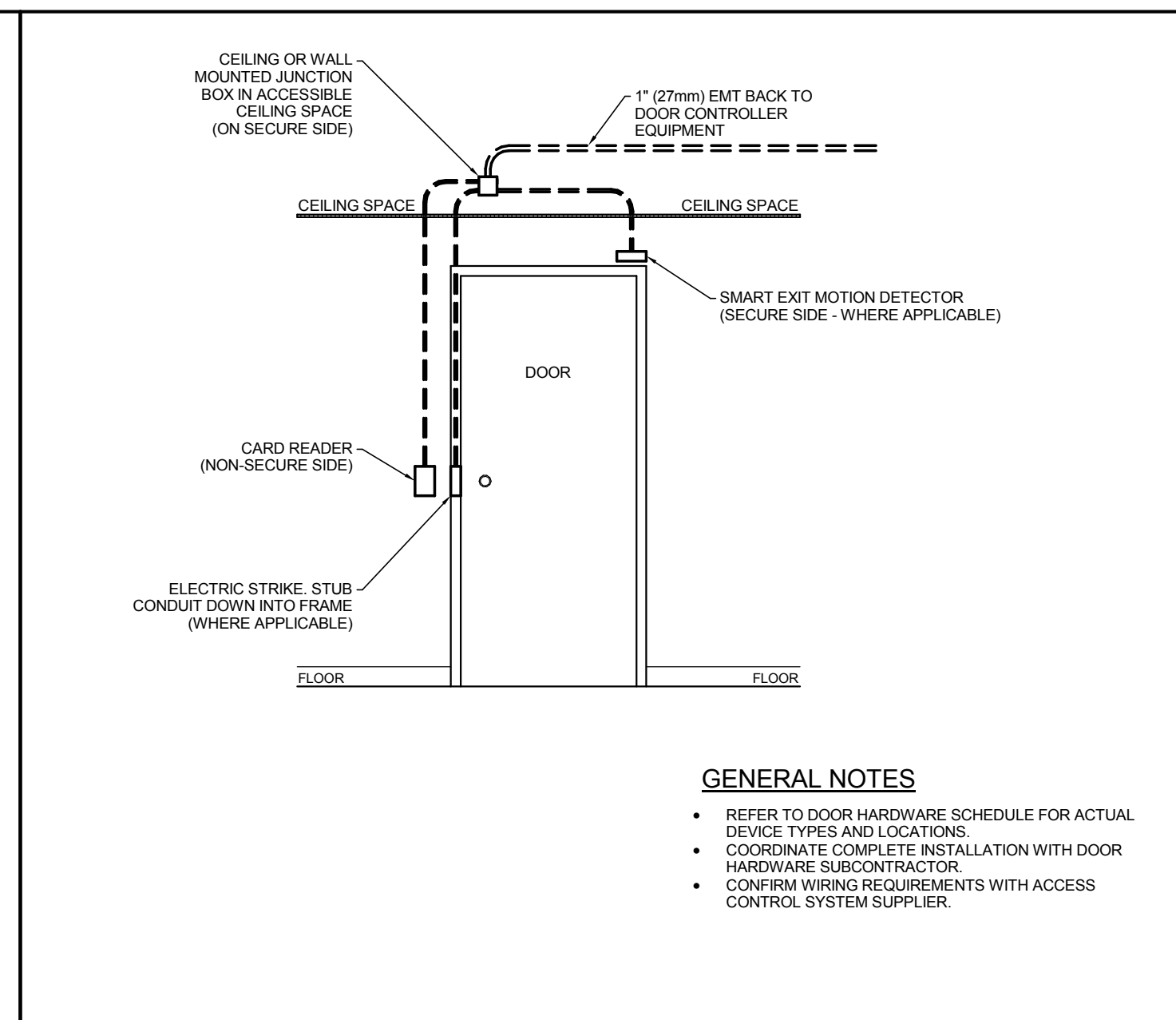


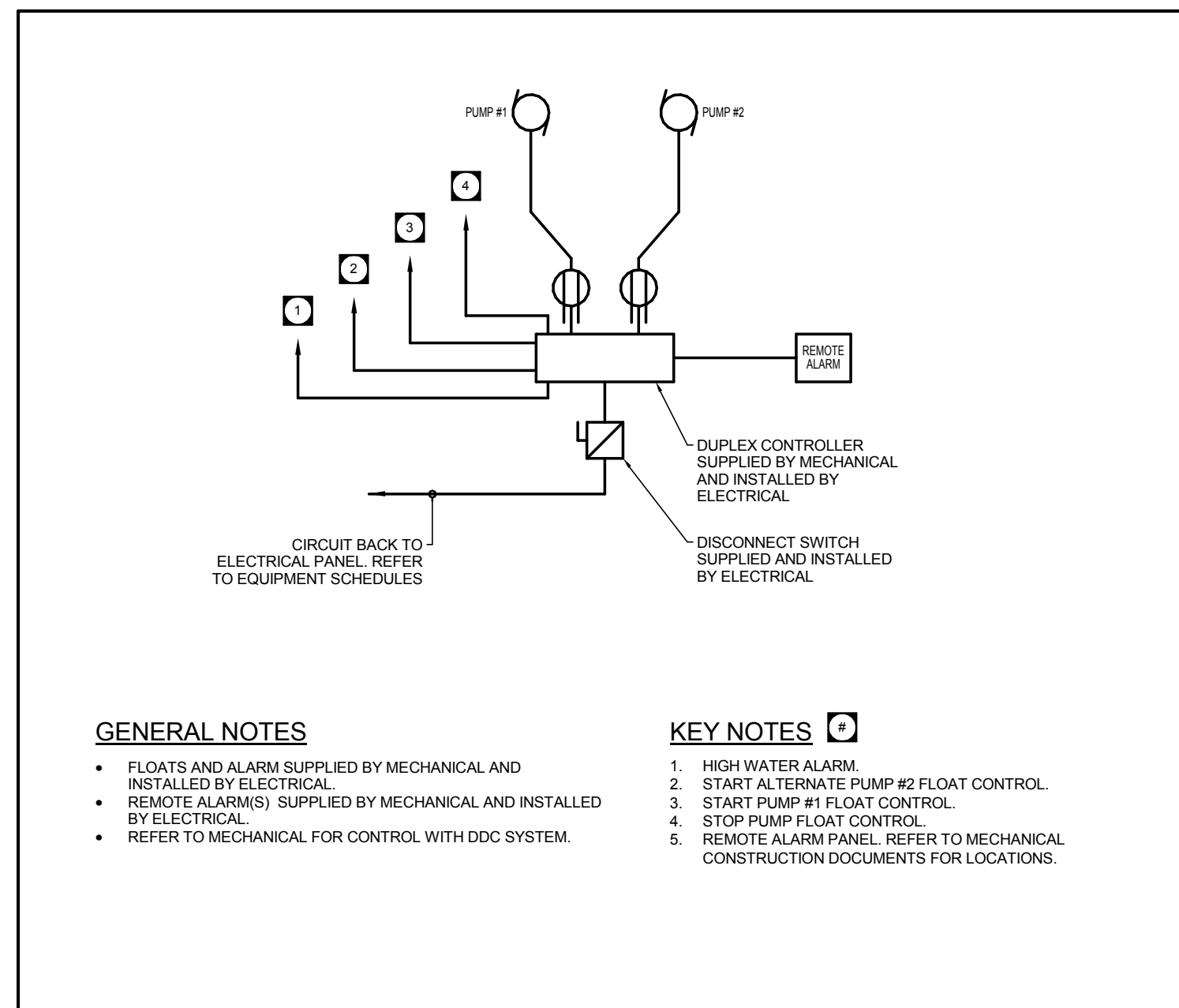
CSTE WIRING DETAIL - 4 WIRE SERVICE



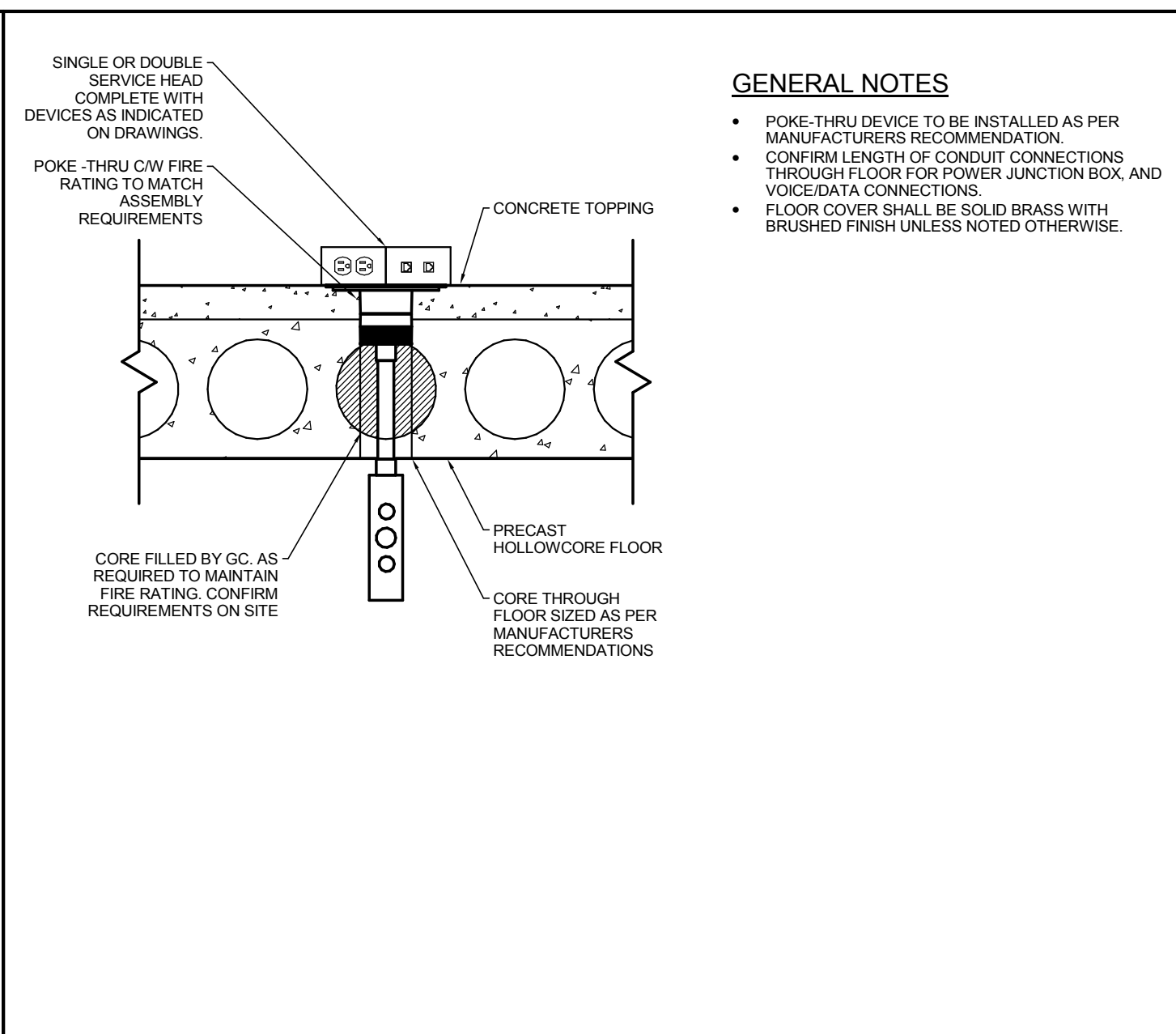
CADDY CLIP DETAIL



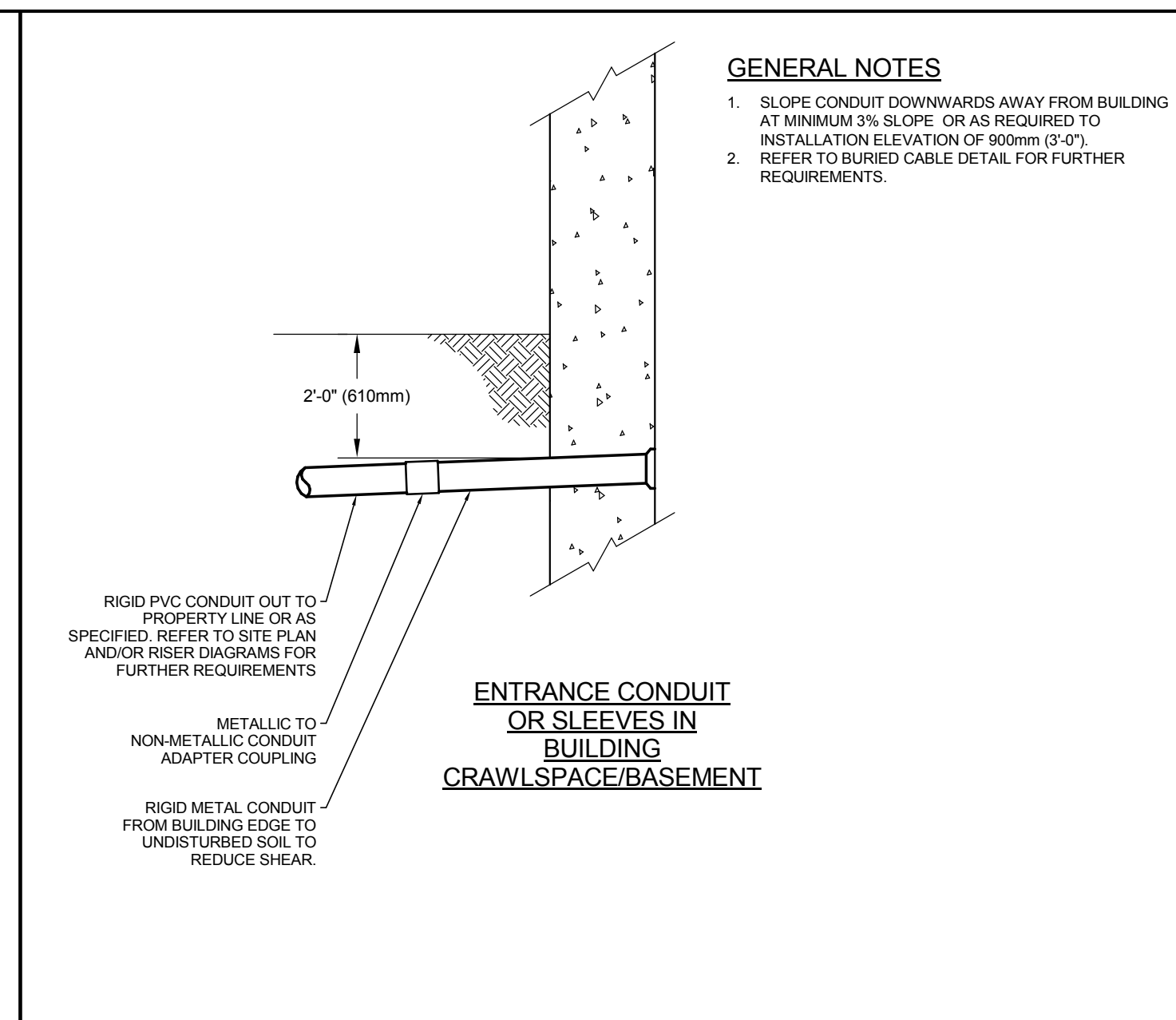
SECURED DOOR ROUGH-IN DETAIL



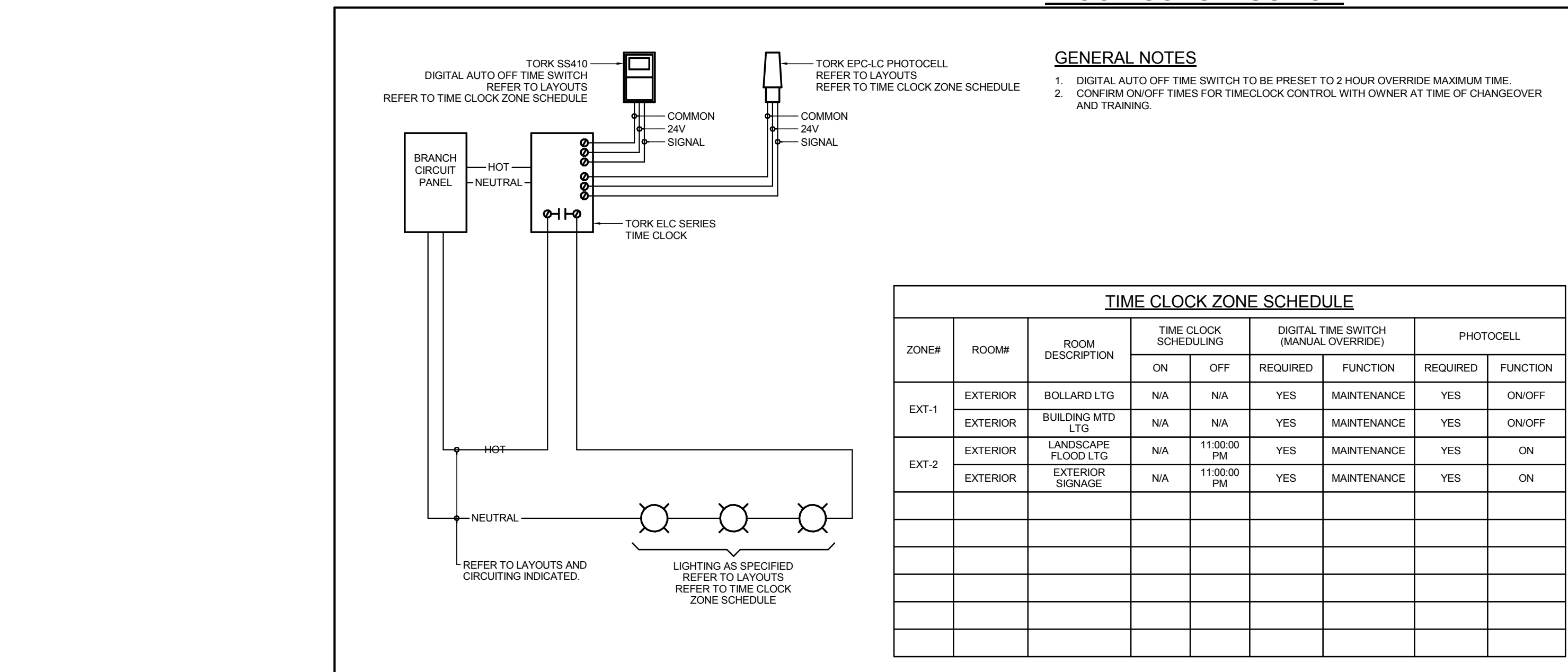
TYPICAL DUPLEX SUMP PUMP WIRING DETAIL



FLUSH MOUNTED POKE-THRU DEVICES IN HOLLOWCORE FLOOR CONSTRUCTION

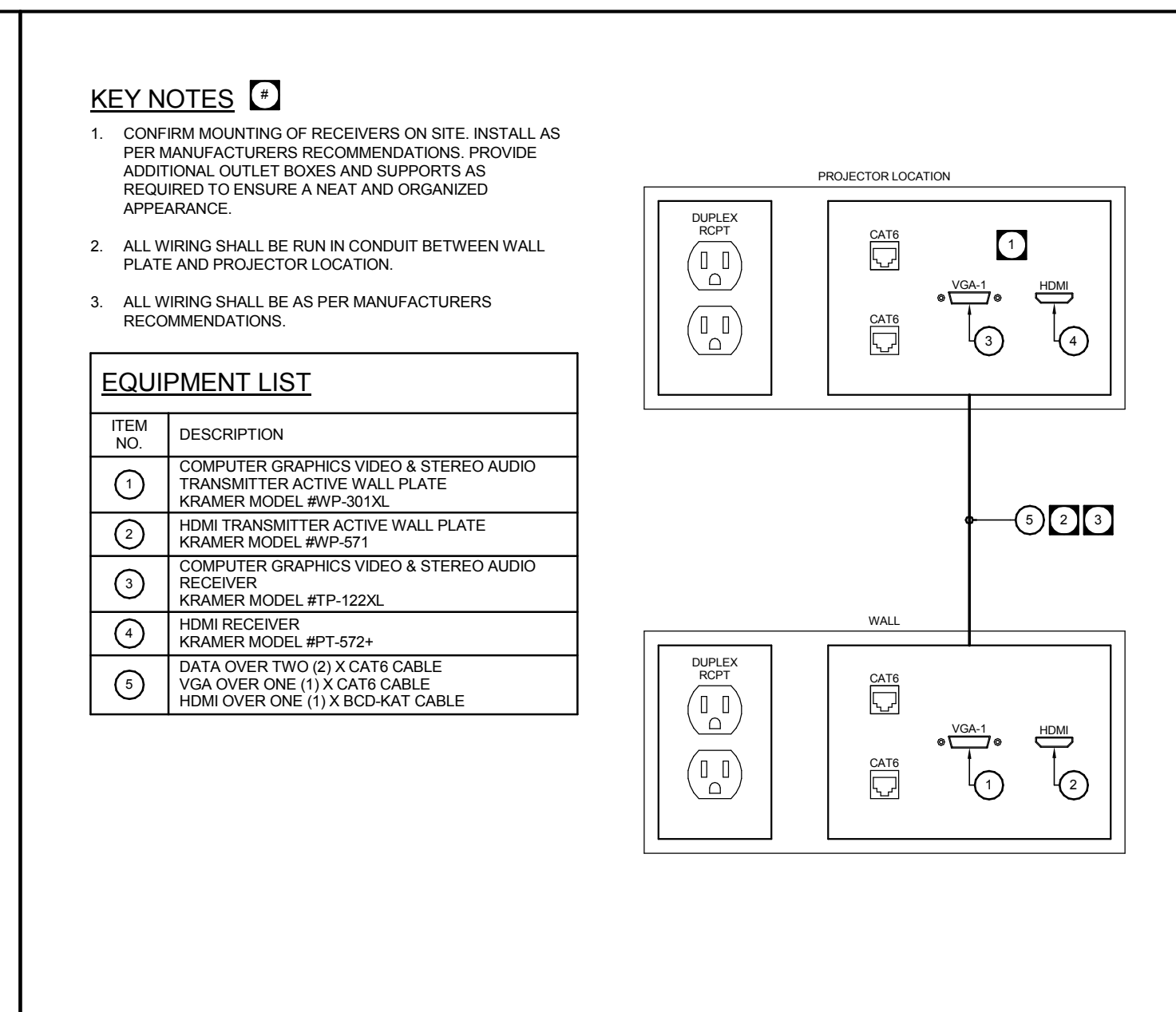


TELCO AND CABLECO SERVICE ENTRANCE CONDUIT



TIME CLOCK WITH PHOTOCELL ON/TIME CLOCK OFF/AND MANUAL OVERRIDE ON

TIME CLOCK ZONE SCHEDULE								
ZONE#	ROOM#	ROOM DESCRIPTION	TIME CLOCK SCHEDULING		DIGITAL TIME SWITCH (MANUAL OVERRIDE)		PHOTOCELL	
			ON	OFF	REQUIRED	FUNCTION	REQUIRED	FUNCTION
EXT-1	EXTERIOR	BOLLARD LTG	N/A	N/A	YES	MAINTENANCE	YES	ON/OFF
	EXTERIOR	BUILDING MTD LTG	N/A	N/A	YES	MAINTENANCE	YES	ON/OFF
EXT-2	EXTERIOR	LANDSCAPE FLOOD LTG	N/A	11:00:00 PM	YES	MAINTENANCE	YES	ON
	EXTERIOR	EXTERIOR SIGNAGE	N/A	11:00:00 PM	YES	MAINTENANCE	YES	ON



MULTI-PURPOSE ROOM PROJECTOR RISER

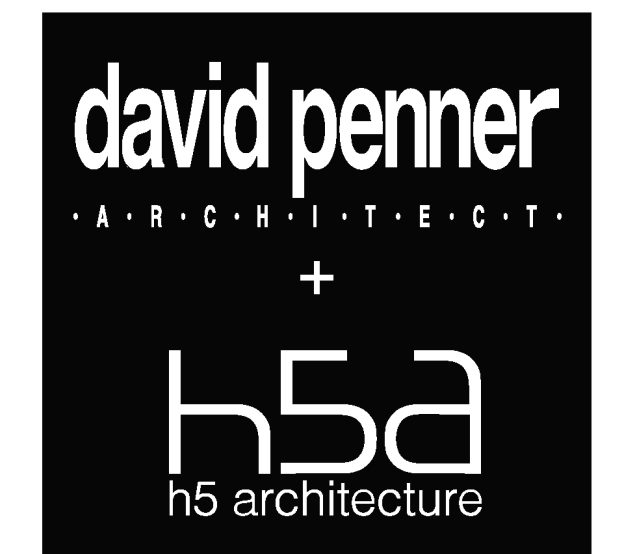
epp siepman engineering inc.
 mechanical & electrical engineers
 303-100 Osborne St. South
 Winnipeg, MB R3L 1Y5
 p 204.453.1080
 ese@eppsiepman.com

16-03-31 Issued for Construction
 revision

THIS DRAWING IS THE EXCLUSIVE PROPERTY OF HIS ARCHITECTURE AND DAVID PENNER ARCHITECT AND MAY NOT BE REPRODUCED AND/OR USED IN ANY MANNER WITHOUT THEIR EXPRESSED WRITTEN PERMISSION. THE GENERAL CONTRACTOR AND MATERIALS SUPPLIERS SHALL CHECK ALL DIMENSIONS AND INFORMATION ON THIS DRAWING AND REPORT ANY DISCREPANCIES PRIOR TO COMMENCEMENT OF WORK. DO NOT SCALE THIS DRAWING.

OWNER

 CITY OF WINNIPEG - PLANNING, PROPERTY & DEVELOPMENT DEPARTMENT
 MUNICIPAL ACCOMMODATIONS DIVISION
 3rd FLOOR - 65 GARRY ST., WPG, R3C 4K4



David Penner, 204.475.8978
 Hello Rodrigues, 204.774.0012
 120 Ysile Avenue, Winnipeg, MB, R3M 0L7

PROJECT
 Windsor Park Library
ADDRESS
 1201 Archibald Street

DATE
 February 28, 2016

SCALE
 12" = 1'-0"

electrical details

E4.1