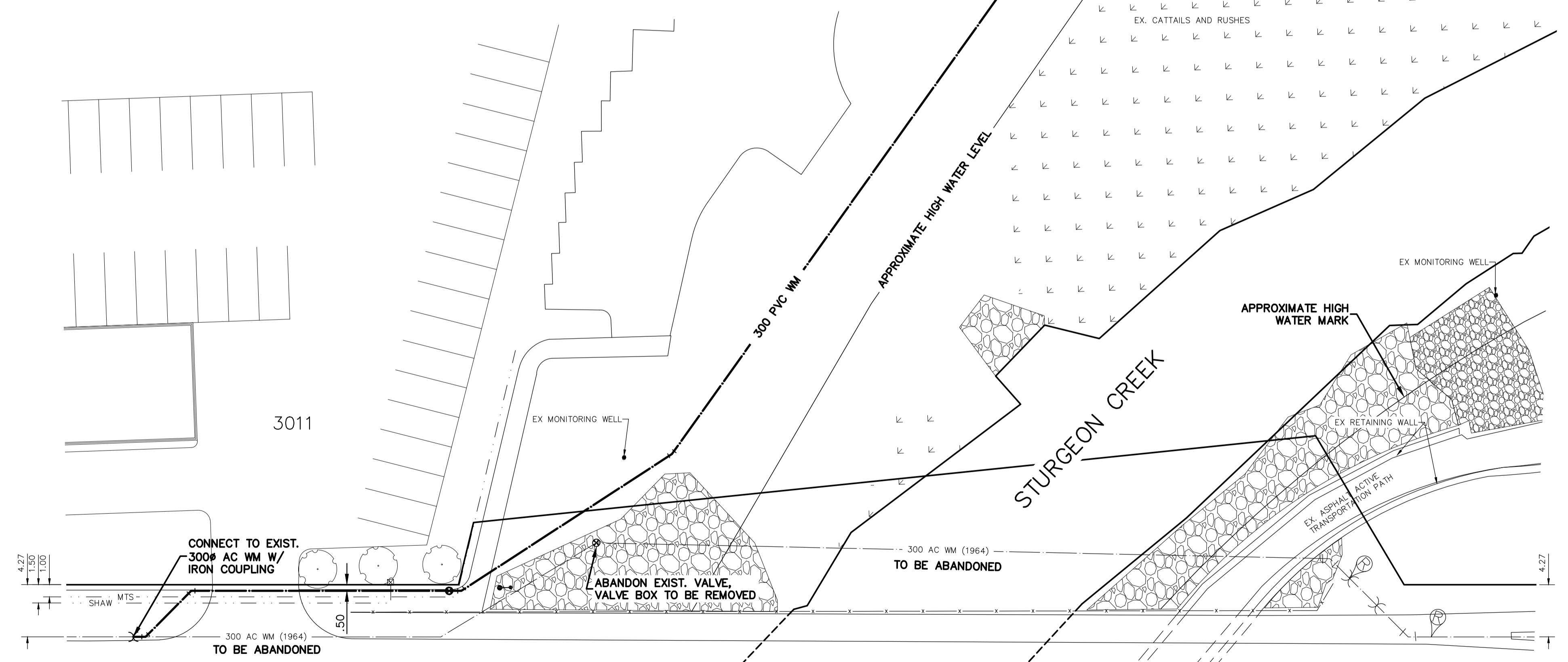
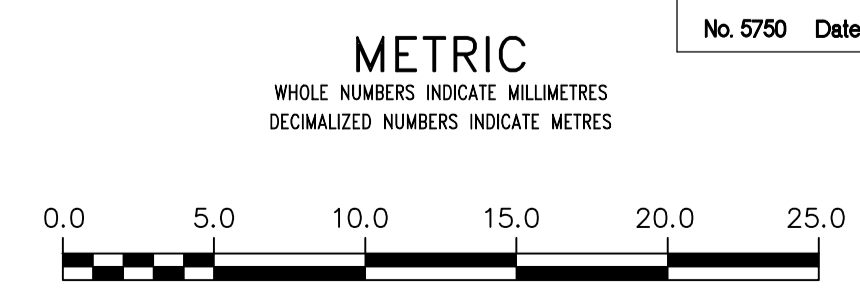


NOTE: CHAINAGES SHOWN ARE ALONG W. P. OF STURGEON RD



NOTE: ALL VALVES TO BE INSTALLED COUNTERCLOCKWISE TO CLOSE



WARNING
 IF POWER EQUIPMENT OR EXPLOSIVES ARE TO BE USED FOR EXCAVATION ON THIS PROJECT THE CONTRACTOR MUST:
 1) NOTIFY THE GAS COMPANY OF THE PROPOSED LOCATION OF EXCAVATION.
 2) TAKE PRECAUTION TO AVOID DAMAGE TO GAS COMPANY INSTALLATIONS.
 SEE PROVINCIAL REGULATION 210/72 FOR DETAILS

LOCATION APPROVED
 UNDERGROUND STRUCTURES
 SUPV. U/G STRUCTURES COMMITTEE DATE
 NOTE:
 LOCATION OF UNDERGROUND STRUCTURES AS SHOWN ARE BASED ON THE BEST INFORMATION AVAILABLE BUT NO GUARANTEE IS GIVEN THAT ALL EXISTING UTILITIES ARE SHOWN OR THAT THE GIVEN LOCATIONS ARE EXACT. CONFIRMATION OF EXISTENCE AND EXACT LOCATION OF ALL SERVICES MUST BE OBTAINED FROM THE INDIVIDUAL UTILITIES BEFORE PROCEEDING WITH CONSTRUCTION.

| | | |
|-----------------|--------------------------|----------------------------------|
| B.M. CWB 39-044 | ELEV. 233.848 | CONSTRUCTION COMPLETION DATE: -- |
| NO. | REVISIONS | DATE |
| 2 | BID OPPORTUNITY 152-2016 | 02/2016 K.G. |
| 1 | DESIGN REVIEW BY W&W | 02/2015 K.G. |

| | | | |
|-------------|-------|---|-----------------|
| WSP | | 1600 BUFFALO PLACE WINNIPEG, MB, R3T 6B8 PHONE: 204-477-6650 FAX: 204-474-2864 WWW.WSPGROUP.COM | |
| DESIGNED BY | K.G. | CHECKED BY | S.M. |
| DRAWN BY | K.G. | APPROVED BY | I.McK. |
| SCALE: | | RELEASED FOR CONSTRUCTION | |
| HORIZONTAL | 1:250 | STACY COURNOYER, P. ENG. | DATE 2016 02 17 |
| VERTICAL | 1:50 | CONSULTANT DRAWING NUMBER | 151-00351-00-14 |

ENGINEER'S SEAL
 CONSULTANT DRAWING NUMBER
 151-00351-00-14

THE CITY OF WINNIPEG
 WATER AND WASTE DEPARTMENT
 ENGINEERING DIVISION

2015 WATERMAIN RENEWALS

STURGEON ROAD
 34.8M NNL OF PORTAGE AVE TO
 141.4M NNL OF PORTAGE AVE

SHEET 4 OF 5
 CITY DRAWING NUMBER
 D-13413