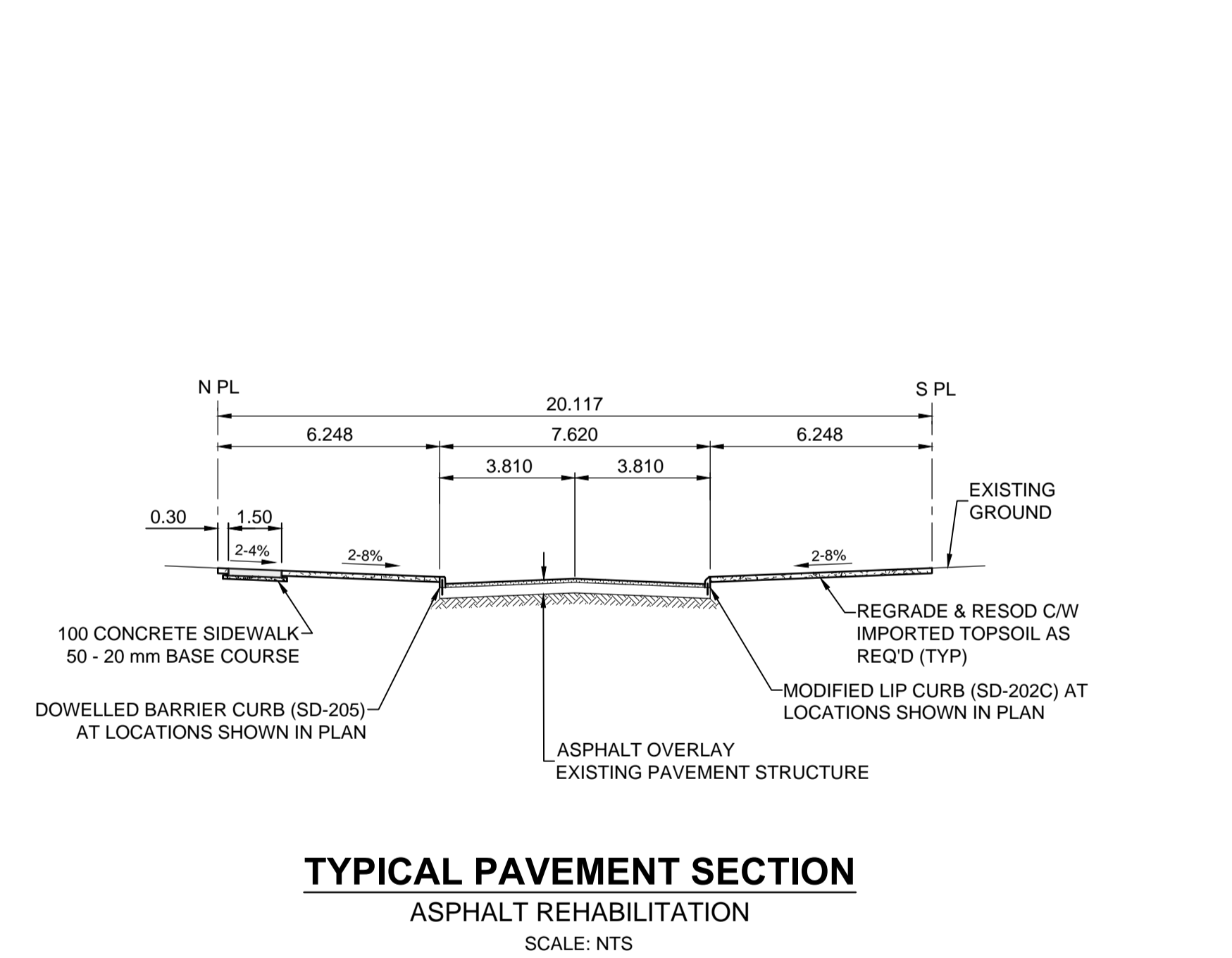
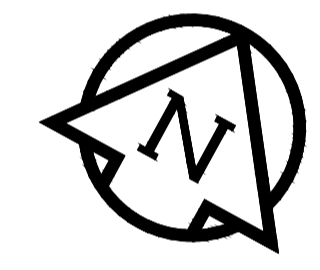
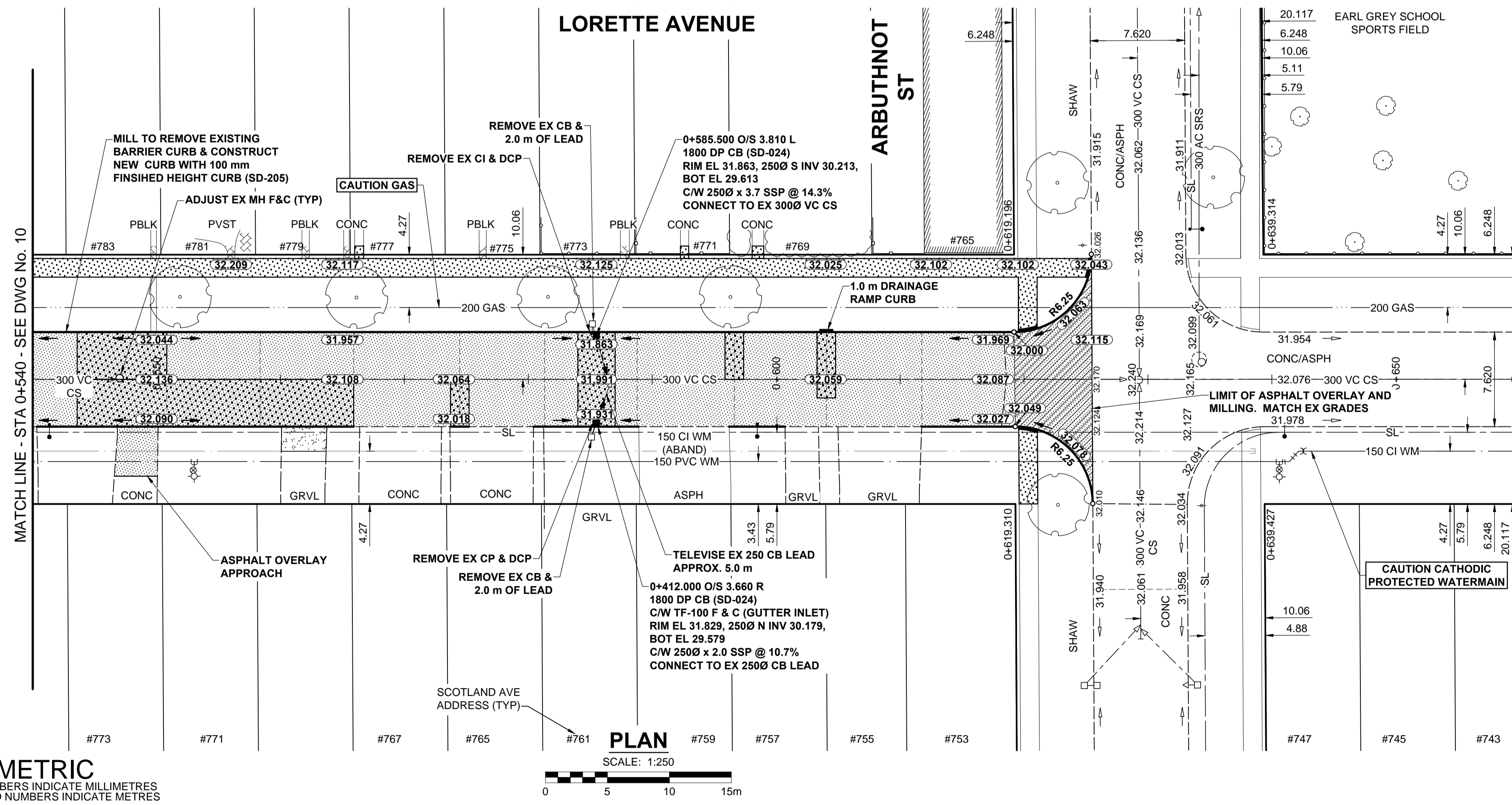
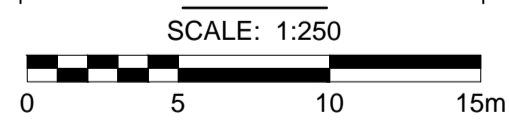


- NOTES**
- ADJUST MH AND CB RIMS TO NEW GRADES.
 - LAMP STANDARDS, HYDRO POLES, AND ANCHORS THAT REQUIRE TEMPORARY SUPPORT, REMOVAL OR REPLACEMENT, TO BE DONE SO AT THE EXPENSE OF THE CONTRACTOR AS NECESSARY.
 - CONTRACTOR TO REGRADE/RENEW EXISTING PRIVATE SIDEWALKS TO LIMITS AS SHOWN. SIDEWALKS TO BE RENEWED WITH CONCRETE UNLESS NOTED OTHERWISE.
 - CONTRACTOR TO TAKE PRECAUTIONARY STEPS TO PROTECT EXISTING TREES WITHIN THE LIMITS OF CONSTRUCTION FROM DAMAGE FROM CONSTRUCTION ACTIVITIES AS OUTLINED IN THE SPECIFICATIONS.
 - CONTRACTOR TO CONFIRM THE LOCATION OF ALL UTILITIES/SERVICES IN THE FIELD PRIOR TO CONSTRUCTION.
 - MODIFIED BARRIER CURB TO BE USED AT ALL INTERSECTION RADII, BACK LANE RADII AND BULLNOSES.
 - CONTRACTOR TO OVERLAY DRIVEWAYS TO ENSURE POSITIVE DRAINAGE TO NEW STREET GRADES. FINAL LIMITS TO BE DETERMINED IN THE FIELD BY CONTRACT ADMINISTRATOR.
 - CB SD-023 & SD-024 OFFSETS ARE DIMENSIONED TO BOC. CB SD-025 OFFSETS ARE DIMENSIONED O/C.
 - REFER TO BID OPPORTUNITY FOR DETAILS REGARDING TRAFFIC MANAGEMENT.
 - ALL APPROACHES TO HAVE 40 mm LIP CURB.
 - ALL COSTS, MATERIALS AND LABOR ASSOCIATED WITH THE RESTORATION OF THE CATHODIC PROTECTED WATERMAIN WILL BE THE RESPONSIBILITY OF THE CONTRACTOR.
 - ADD 200.000 m TO ABBREVIATED ELEVATIONS TO OBTAIN GEODETIC ELEVATIONS.



METRIC
WHOLE NUMBERS INDICATE MILLIMETRES
DECIMALIZED NUMBERS INDICATE METRES



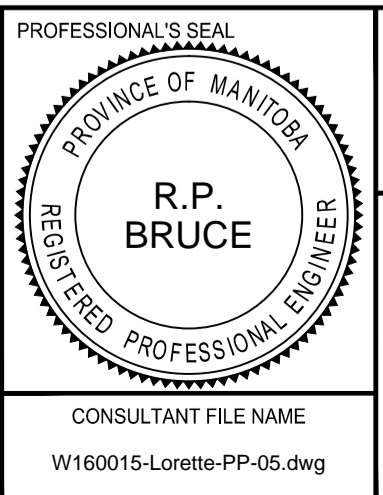
LOCATION APPROVED UNDERGROUND STRUCTURES

| | |
|-------------------------|------------------------|
| MANHOLE | CONCRETE PAVEMENT |
| CATCH BASIN / CATCH PIT | CONC SIDEWALK / MEDIAN |
| CURB INLET WITH BOX | ASPHALT PAVEMENT |
| TREE | PAVING STONE |
| TEST HOLE | GRAVEL |
| PROPERTY LINE | RAMP CURB |
| SURVEY BAR | PLANING / REMOVAL |
| FENCE | |
| BOC / EDGE OF PAVEMENT | |
| ELEVATION | |
| TRAFFIC SIGN | |

NOTE:
LOCATION OF UNDERGROUND STRUCTURES AS SHOWN ARE BASED ON THE BEST INFORMATION AVAILABLE BUT NO GUARANTEE IS GIVEN THAT ALL EXISTING UTILITIES ARE SHOWN OR THAT THE GIVEN LOCATIONS ARE EXACT. CONFIRMATION OF EXISTENCE AND EXACT LOCATION OF ALL SERVICES MUST BE OBTAINED FROM THE INDIVIDUAL UTILITIES BEFORE PROCEEDING WITH CONSTRUCTION.

| | |
|----------------|--|
| BM 52-023 | SW Cor. Wentworth St. & Weatherdon Ave., Brass |
| ELEV 231.873 m | (4.6 m in Conc. pile, 2.6 m E. of W.L. Wentworth St. & 0.6 m S. of S.L. Weatherdon Ave.) |
| C | ISSUED FOR ADDENDUM 1 |
| B | ISSUED FOR TENDER |
| A | ISSUED FOR CLIENT REVIEW |
| No. | REVISIONS |

| | | | |
|-------------|----------|---------------------------|-----|
| DESIGNED BY | WRJ | CHECKED BY | RPB |
| DRAWN BY | KMB | APPROVED BY | BWB |
| DATE | 16/03/16 | RELEASED FOR CONSTRUCTION | |
| HOR SCALE | 1:250 | | |
| VERT SCALE | 1:10 | | |



THE CITY OF WINNIPEG
PUBLIC WORKS DEPARTMENT
ENGINEERING DIVISION

2016 LOCAL STREETS PACKAGE
LORETTE AVENUE
STAFFORD ST TO ARBUTHNOT ST
ASPHALT REHABILITATION
HORIZONTAL AND VERTICAL ALIGNMENT
STA 0+540 TO ARBUTHNOT ST

| | |
|---------------------|----------|
| CITY DRAWING NUMBER | N/A |
| SHEET | 11 OF 17 |
| DRAWING No. | REV |
| | 11 C |

BID OPPORTUNITY No. 180-2016

