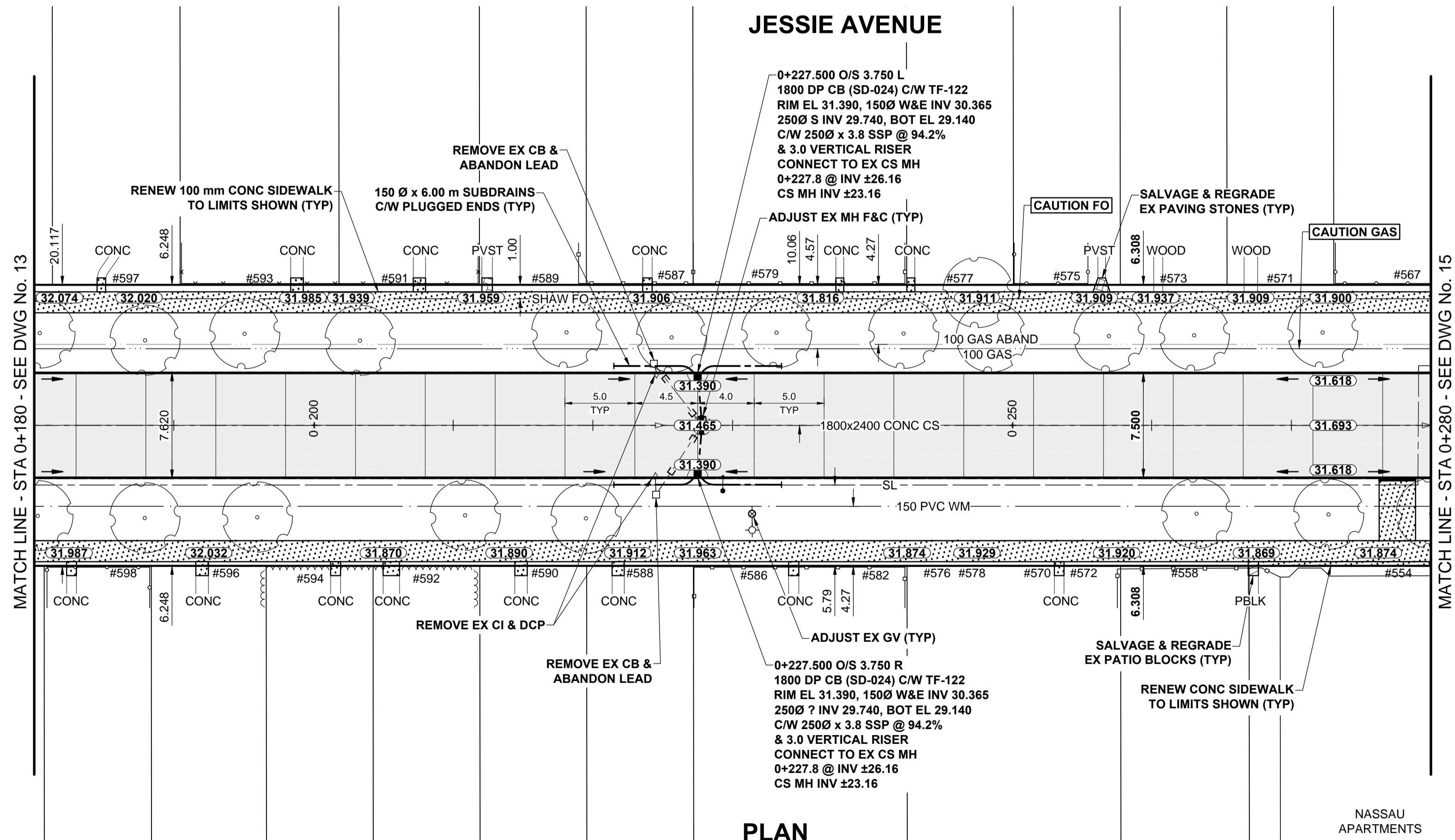


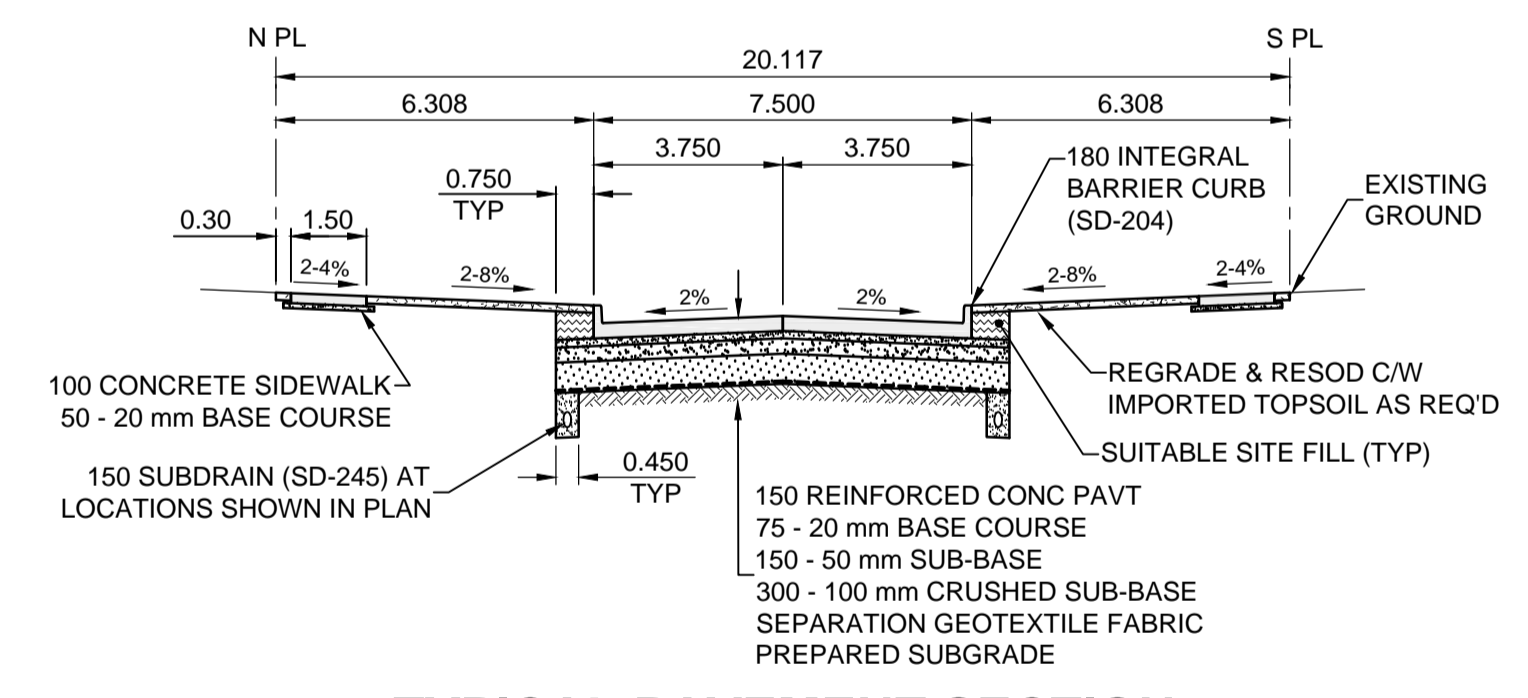
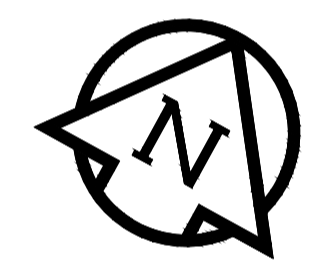
- NOTES**
- ADJUST MH AND CB RIMS TO NEW GRADES.
 - LAMP STANDARDS, HYDRO POLES, AND ANCHORS THAT REQUIRE TEMPORARY SUPPORT, REMOVAL OR REPLACEMENT, TO BE DONE SO AT THE EXPENSE OF THE CONTRACTOR AS NECESSARY.
 - CONTRACTOR TO REGRADE/RENEW EXISTING PRIVATE SIDEWALKS TO LIMITS AS SHOWN. SIDEWALKS TO BE RENEWED WITH CONCRETE UNLESS NOTED OTHERWISE.
 - CONTRACTOR TO TAKE PRECAUTIONARY STEPS TO PROTECT EXISTING TREES WITHIN THE LIMITS OF CONSTRUCTION FROM DAMAGE FROM CONSTRUCTION ACTIVITIES AS OUTLINED IN THE SPECIFICATIONS.
 - CONTRACTOR TO CONFIRM THE LOCATION OF ALL UTILITIES/SERVICES IN THE FIELD PRIOR TO CONSTRUCTION.
 - CB SD-023 & SD-024 OFFSETS ARE DIMENSIONED TO BOC. CB SD-025 OFFSETS ARE DIMENSIONED O/C.
 - IN GENERAL, PAVEMENT AND SIDEWALK AREAS TO BE REMOVED. MATCH RECONSTRUCTION LIMITS.
 - REFER TO BID OPPORTUNITY FOR DETAILS REGARDING TRAFFIC MANAGEMENT.
 - ALL EXISTING LONG WATER SERVICES TO BE INSULATED (SD-018). REFER TO BID OPPORTUNITY FOR FURTHER REQUIREMENTS.
 - ADD 200.000m TO ABBREVIATED ELEVATIONS TO OBTAIN GEODETIC ELEVATIONS.

PAVEMENT PROFILE
VERTICAL SCALE: 1:10
0 0.1 0.2 0.3 0.4 0.5m

JESSIE AVENUE



PLAN
SCALE: 1:250
0 5 10 15m



TYPICAL PAVEMENT SECTION
CONCRETE PAVEMENT STRUCTURE
SCALE: NTS

METRIC
WHOLE NUMBERS INDICATE MILLIMETRES
DECIMALIZED NUMBERS INDICATE METRES

| | | | | | | | |
|---------|-------------------------|-----|-----------------------|----------|----------------------|------------------------|-----------------------------------------------------------------------------------------------------------------------------------------------------------|
| --- | GAS | ○ | MANHOLE | ● | CONCRETE PAVEMENT | LOCATION APPROVED | BM 52-002 |
| ---○--- | MTS HANDWELL/PEDESTAL | □ | CATCH BASIN/CATCH PIT | ■ | CONC SIDEWALK/MEDIAN | UNDERGROUND STRUCTURES | Bolt in 4.6 m Conc. pile in island formed by Pembina Hwy. Warsaw Ave. & Nassau St. N. 2.5 m N. of S.L. of Warsaw Ave., & 1.2 m W. of W.L. of Pembina Hwy. |
| ---△--- | HYDRO HANDWELL/CABINET | △ | CURB INLET WITH BOX | ▲ | ASPHALT PAVEMENT | | |
| --- | CATV/FIBRE OPTIC | ○ | TREE | ○ | PAVING STONE | | |
| --- | TRAFFIC SIGNALS/PIT | ⊕ | TEST HOLE | ⊕ | GRAVEL | | |
| --- | LAND DRAINAGE SEWER | --- | PROPERTY LINE | --- | RAMP CURB | | |
| --- | SANITARY/COMBINED SEWER | --- | SURVEY BAR | --- | PLANING/REMOVAL | | |
| --- | CB LEAD/SSP/DCP | --- | FENCE | --- | | | |
| --- | WATERMAIN | --- | BOC/EDGE OF PAVEMENT | --- | | | |
| --- | SUBDRAIN | --- | ELEVATION | (33.333) | | | |
| --- | DITCH | --- | TRAFFIC SIGN | | | | |
| --- | EXISTING | --- | LEGEND - PLAN | --- | EXISTING | LEGEND - PLAN | --- |
| --- | NEW | --- | LEGEND - PLAN | --- | NEW | LEGEND - PLAN | --- |

LOCATION APPROVED
UNDERGROUND STRUCTURES

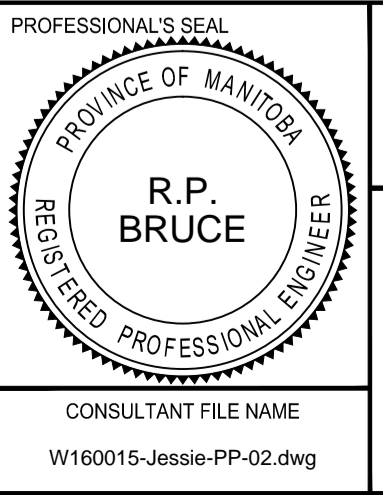
SUPR. UIG STRUCTURES COMMITTEE DATE

NOTE:
LOCATION OF UNDERGROUND STRUCTURES AS SHOWN ARE BASED ON THE BEST INFORMATION AVAILABLE BUT NO GUARANTEE IS GIVEN THAT ALL EXISTING UTILITIES ARE SHOWN OR THAT THE GIVEN LOCATIONS ARE EXACT. CONFIRMATION OF EXISTENCE AND EXACT LOCATION OF ALL SERVICES MUST BE OBTAINED FROM THE INDIVIDUAL UTILITIES BEFORE PROCEEDING WITH CONSTRUCTION.

| | | | | | |
|-----|--------------------------|----------|-----|---------------------------|-------|
| B | ISSUED FOR TENDER | 16/04/14 | RPB | HOR SCALE | 1:250 |
| A | ISSUED FOR CLIENT REVIEW | 16/03/18 | RPB | VERT SCALE | 1:10 |
| No. | REVISIONS | Y/M/MDD | BY | RELEASED FOR CONSTRUCTION | DATE |
| | | | | 16/03/18 | |



| | | | |
|--------------------------------------------------|-----|-------------|-----|
| DESIGNED BY | RPB | CHECKED BY | WRJ |
| DRAWN BY | KMB | APPROVED BY | BWB |
| CONSULTANT FILE NAME W160015-Jessie-PP-02.dwg | | | |

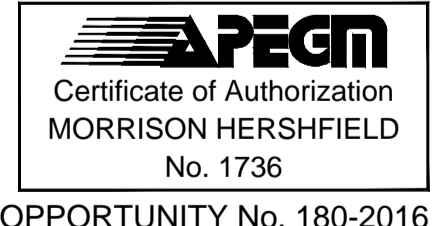


THE CITY OF WINNIPEG
PUBLIC WORKS DEPARTMENT
ENGINEERING DIVISION

2016 LOCAL STREETS PACKAGE
JESSIE AVENUE
DALY ST N TO NASSAU ST N
CONCRETE RECONSTRUCTION
HORIZONTAL AND VERTICAL ALIGNMENT
STA 0+180 TO STA 0+280

CITY DRAWING NUMBER: N/A
SHEET 14 OF 17
DRAWING No. 14 REV B

CITY OF WINNIPEG
14 B



BID OPPORTUNITY No. 180-2016