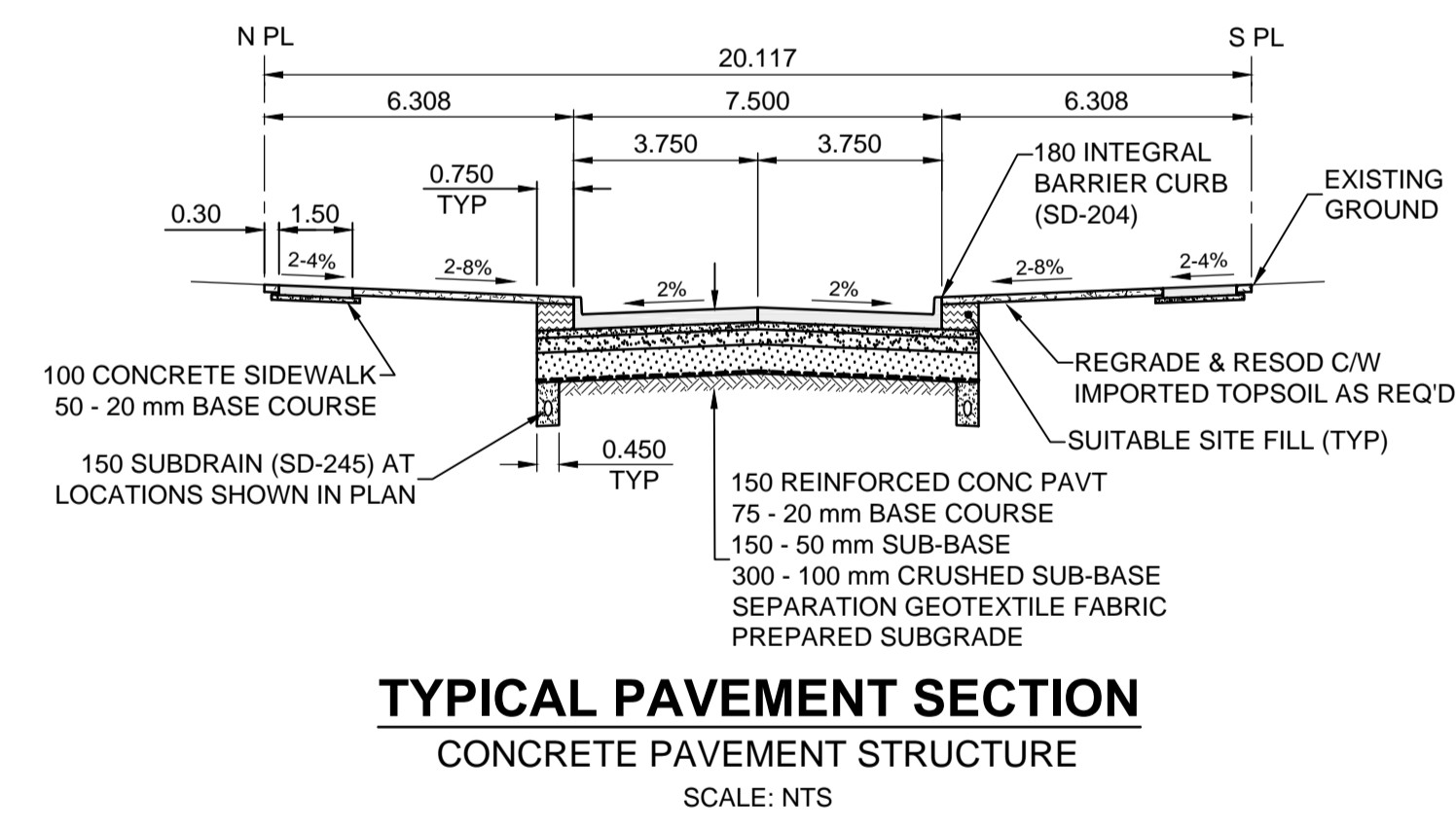
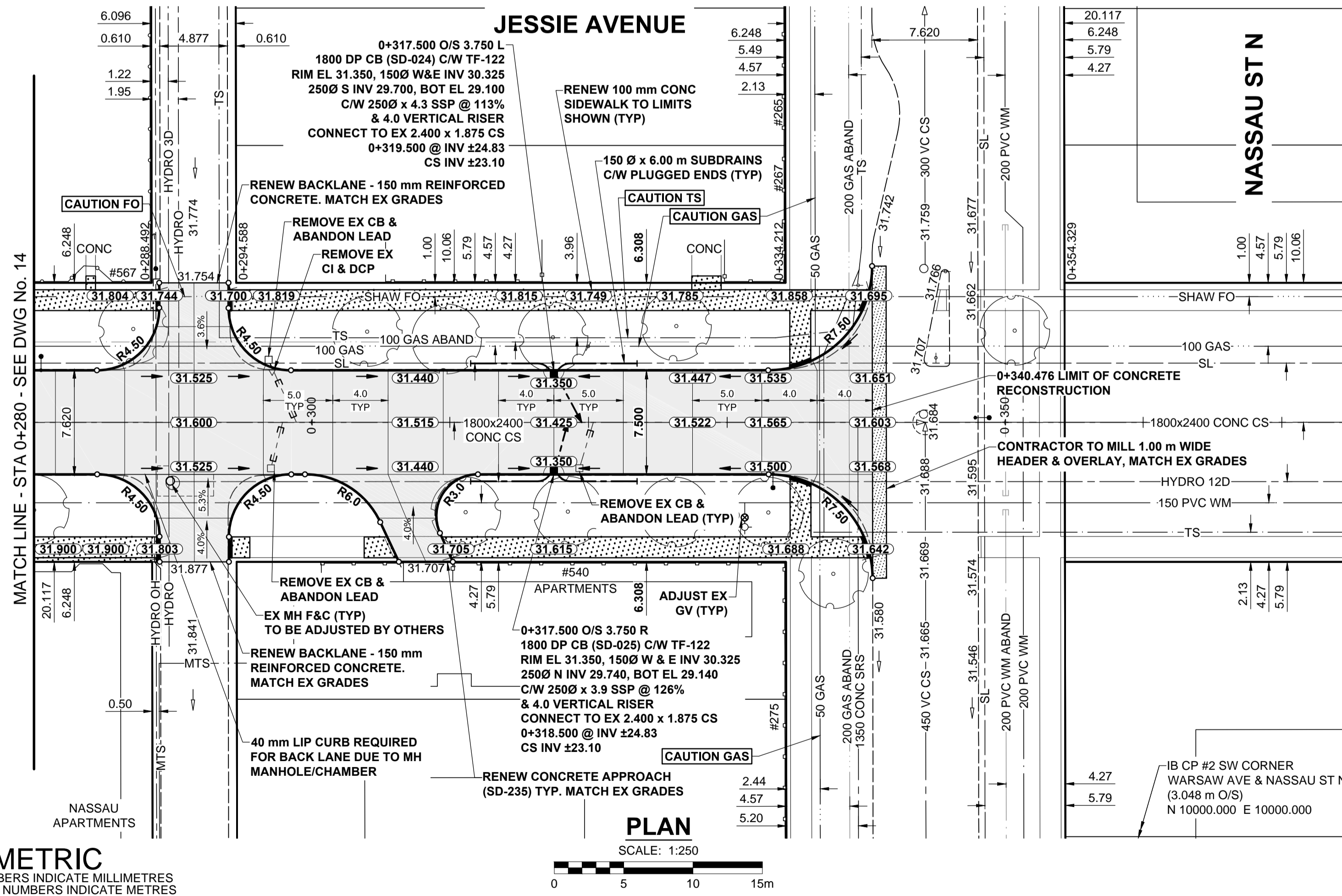


- NOTES**
- ADJUST MH AND CB RIMS TO NEW GRADES.
  - LAMP STANDARDS, HYDRO POLES, AND ANCHORS THAT REQUIRE TEMPORARY SUPPORT, REMOVAL OR REPLACEMENT, TO BE DONE SO AT THE EXPENSE OF THE CONTRACTOR AS NECESSARY.
  - CONTRACTOR TO REGRADE/RENEW EXISTING PRIVATE SIDEWALKS TO LIMITS AS SHOWN. SIDEWALKS TO BE RENEWED WITH CONCRETE UNLESS NOTED OTHERWISE.
  - CONTRACTOR TO TAKE PRECAUTIONARY STEPS TO PROTECT EXISTING TREES WITHIN THE LIMITS OF CONSTRUCTION FROM DAMAGE FROM CONSTRUCTION ACTIVITIES AS OUTLINED IN THE SPECIFICATIONS.
  - CONTRACTOR TO CONFIRM THE LOCATION OF ALL UTILITIES/SERVICES IN THE FIELD PRIOR TO CONSTRUCTION.
  - CB SD-023 & SD-024 OFFSETS ARE DIMENSIONED TO BOC. CB SD-025 OFFSETS ARE DIMENSIONED O/C.
  - IN GENERAL, PAVEMENT AND SIDEWALK AREAS TO BE REMOVED. MATCH RECONSTRUCTION LIMITS.
  - REFER TO BID OPPORTUNITY FOR DETAILS REGARDING TRAFFIC MANAGEMENT.
  - ALL EXISTING LONG WATER SERVICES TO BE INSULATED (SD-018). REFER TO BID OPPORTUNITY FOR FURTHER REQUIREMENTS.
  - ADD 200.000m TO ABBREVIATED ELEVATIONS TO OBTAIN GEODETIC ELEVATIONS.



**METRIC**  
WHOLE NUMBERS INDICATE MILLIMETRES  
DECIMALIZED NUMBERS INDICATE METRES

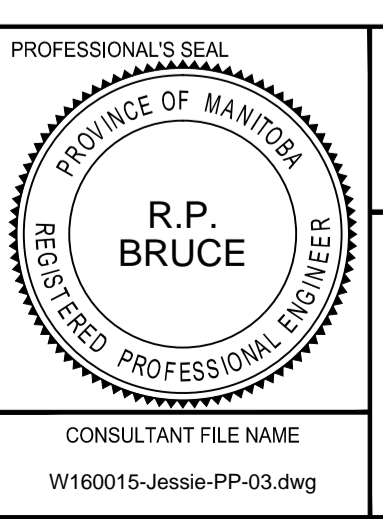
---	GAS	○	MANHOLE	●	CONCRETE PAVEMENT
---	MTS HANDWELL/PEDESTAL	□	CATCH BASIN/CATCH PIT	■	CONC SIDEWALK/MEDIAN
---	HYDRO HANDWELL/CABINET	△	CURB INLET WITH BOX	▲	ASPHALT PAVEMENT
---	CATV/FIBRE OPTIC	○	TREE	▲	PAVING STONE
---	TRAFFIC SIGNALS/PIT	⊕	TEST HOLE	▲	GRAVEL
---	LAND DRAINAGE SEWER	⊕	PROPERTY LINE	▲	RAMP CURB
---	SANITARY/COMBINED SEWER	⊕	SURVEY BAR	▲	PLANING/REMOVAL
---	CB LEAD/SSP/DCP	⊕	FENCE	▲	
---	WATERMAIN	⊕	BOC/EDGE OF PAVEMENT	▲	
---	SUBDRAIN	33.000	ELEVATION	(33.333)	
---	DITCH	←	TRAFFIC SIGN		
---	EXISTING		LEGEND - PLAN		
---	NEW		LEGEND - PLAN		

**LOCATION APPROVED UNDERGROUND STRUCTURES**

DATE \_\_\_\_\_

**NOTE:** LOCATION OF UNDERGROUND STRUCTURES AS SHOWN ARE BASED ON THE BEST INFORMATION AVAILABLE BUT NO GUARANTEE IS GIVEN THAT ALL EXISTING UTILITIES ARE SHOWN OR THAT THE GIVEN LOCATIONS ARE EXACT. CONFIRMATION OF EXISTENCE AND EXACT LOCATION OF ALL SERVICES MUST BE OBTAINED FROM THE INDIVIDUAL UTILITIES BEFORE PROCEEDING WITH CONSTRUCTION.

BM 52-002	Bolt in 4.6 m Conc. pile in island formed by Pembina Hwy, Warsaw Ave. & Nassau St. N. 2.5 m N. of S.L. of Warsaw Ave., & 1.2 m W. of W.L. of Pembina Hwy.	ELEV 231.952 m	
DESIGNED BY	RPB	CHECKED BY	WRJ
DRAWN BY	KMB	APPROVED BY	BWB
ISSUED FOR TENDER	16/04/14	RPB	
ISSUED FOR CLIENT REVIEW	16/03/18	RPB	
REVISIONS	YYMMDD	BY	DATE
			16/03/18



**THE CITY OF WINNIPEG**  
PUBLIC WORKS DEPARTMENT  
ENGINEERING DIVISION

**2016 LOCAL STREETS PACKAGE**  
JESSIE AVENUE  
DALY ST N TO NASSAU ST N  
CONCRETE RECONSTRUCTION  
HORIZONTAL AND VERTICAL ALIGNMENT  
0+280 TO NASSAU ST N

CITY DRAWING NUMBER: N/A  
SHEET 15 OF 17  
DRAWING No. 15 REV B

CONSULTANT FILE NAME: W160015-Jessie-PP-03.dwg

BID OPPORTUNITY No. 180-2016