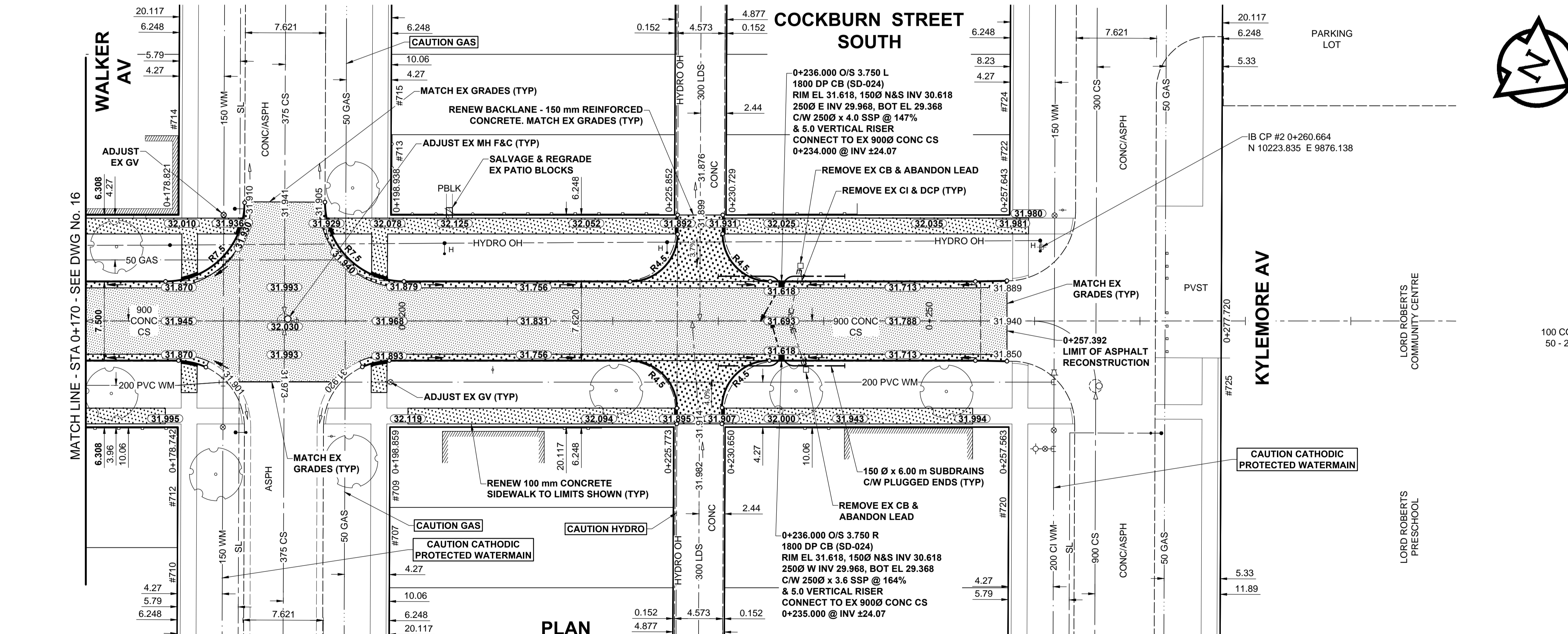


PAVEMENT PROFILE

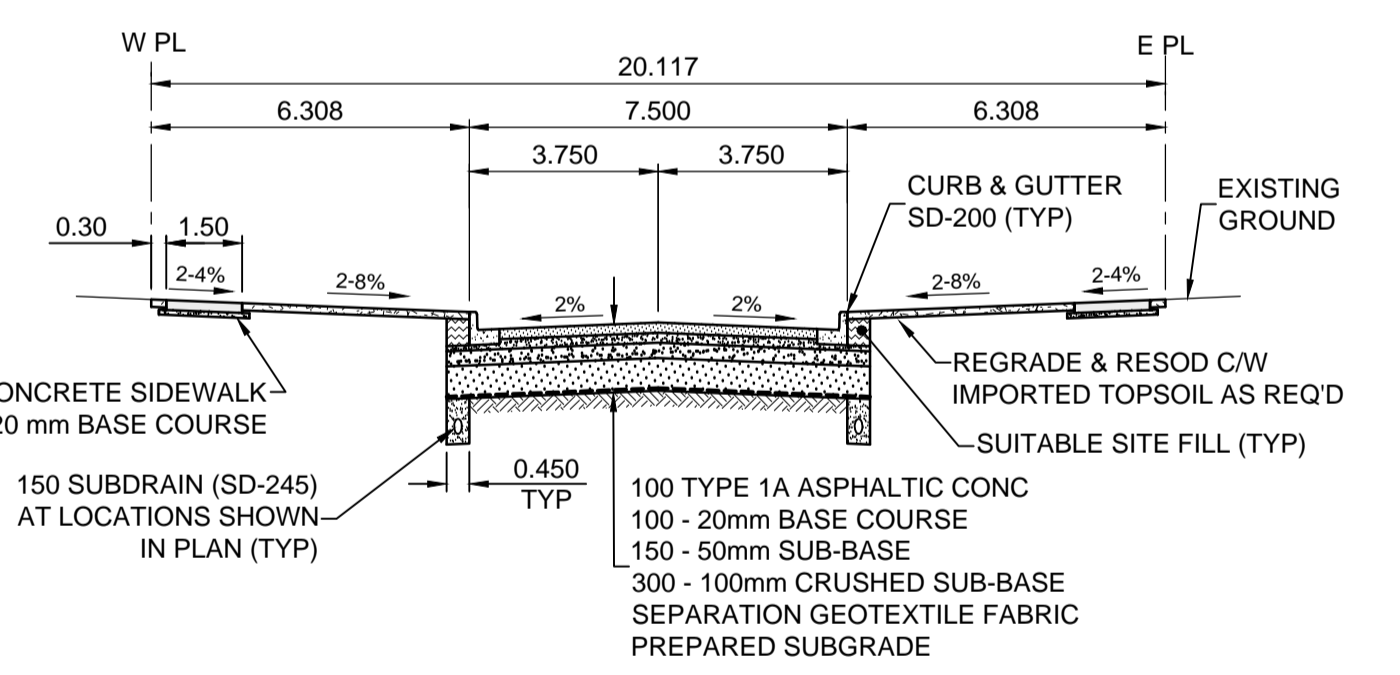
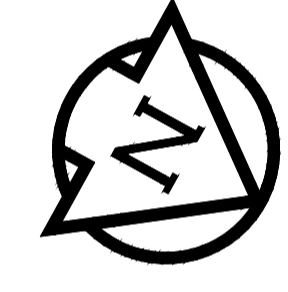
VERTICAL SCALE: 1:10

- NOTES**
- ADJUST MH AND CB RIMS TO NEW GRADES.
 - LAMP STANDARDS, HYDRO POLES, AND ANCHORS THAT REQUIRE TEMPORARY SUPPORT, REMOVAL OR REPLACEMENT, TO BE DONE SO AT THE EXPENSE OF THE CONTRACTOR AS NECESSARY.
 - CONTRACTOR TO REGRADE/RENEW EXISTING PRIVATE SIDEWALKS TO LIMITS AS SHOWN. SIDEWALKS TO BE RENEWED WITH CONCRETE UNLESS NOTED OTHERWISE.
 - CONTRACTOR TO TAKE PRECAUTIONARY STEPS TO PROTECT EXISTING TREES WITHIN THE LIMITS OF CONSTRUCTION FROM DAMAGE FROM CONSTRUCTION ACTIVITIES AS OUTLINED IN THE SPECIFICATIONS.
 - CONTRACTOR TO CONFIRM THE LOCATION OF ALL UTILITIES/SERVICES IN THE FIELD PRIOR TO CONSTRUCTION.
 - CB SD-023 & SD-024 OFFSETS ARE DIMENSIONED TO BOC. CB SD-025 OFFSETS ARE DIMENSIONED O/C.
 - IN GENERAL, PAVEMENT AND SIDEWALK AREAS TO BE REMOVED. MATCH RECONSTRUCTION LIMITS.
 - REFER TO BID OPPORTUNITY FOR DETAILS REGARDING TRAFFIC MANAGEMENT.
 - ALL EXISTING LONG WATER SERVICES TO BE INSULATED (SD-018). REFER TO BID OPPORTUNITY FOR FURTHER REQUIREMENTS.
 - ALL COSTS, MATERIALS AND LABOR ASSOCIATED WITH THE RESTORATION OF THE CATHODIC PROTECTED WATERMAIN WILL BE THE RESPONSIBILITY OF THE CONTRACTOR.
 - ADD 200.000m TO ABBREVIATED ELEVATIONS TO OBTAIN GEODETIC ELEVATIONS.



COCKBURN STREET SOUTH

PLAN SCALE: 1:250



TYPICAL PAVEMENT SECTION ASPHALT PAVEMENT STRUCTURE SCALE: NTS

METRIC WHOLE NUMBERS INDICATE MILLIMETRES DECIMALIZED NUMBERS INDICATE METRES

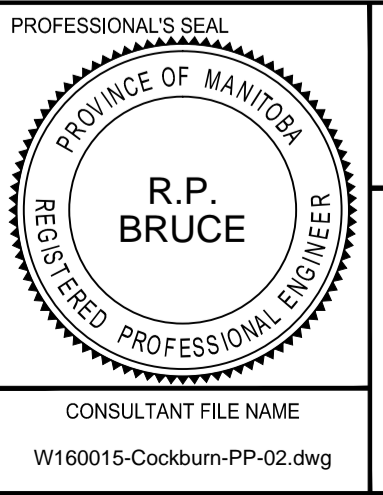
---	GAS	○	MANHOLE	●	CONCRETE PAVEMENT
---	MTS HANDWELL/PEDESTAL	△	CATCH BASIN/CATCH PIT	■	CONC SIDEWALK/MEDIAN
---	HYDRO HANDWELL/CABINET	□	CURB INLET WITH BOX	▲	ASPHALT PAVEMENT
---	CATV/FIBRE OPTIC	○	TREE	■	PAVING STONE
---	TRAFFIC SIGNALS/PIT	⊕	TH-12	○	GRAVEL
---	LAND DRAINAGE SEWER	---	PROPERTY LINE	---	RAMP CURB
---	SANITARY/COMBINED SEWER	---	SURVEY BAR	---	PLANING/REMOVAL
---	CB LEAD/SSP/DCP	---	FENCE	---	
---	WATERMAIN	---	BOC/EDGE OF PAVEMENT	---	
---	SUBDRAIN	---	ELEVATION	---	
---	DITCH	---	TRAFFIC SIGN	---	
---	EXISTING	---	LEGEND - PLAN	---	
---	NEW	---	LEGEND - PLAN	---	

LOCATION APPROVED
UNDERGROUND STRUCTURES

DATE: _____

NOTE:
LOCATION OF UNDERGROUND STRUCTURES AS SHOWN ARE BASED ON THE BEST INFORMATION AVAILABLE BUT NO GUARANTEE IS GIVEN THAT ALL EXISTING UTILITIES ARE SHOWN OR THAT THE GIVEN LOCATIONS ARE EXACT. CONFIRMATION OF EXISTENCE AND EXACT LOCATION OF ALL SERVICES MUST BE OBTAINED FROM THE INDIVIDUAL UTILITIES BEFORE PROCEEDING WITH CONSTRUCTION.

BM 53-017	N side Barendse Ave., E. of Cockburn St. S., 1.5m in S. Conc. foundation of Lord Roberts School, 25.0m W. & 0.2 m below stone from S.E. Cor. of School.	16/03/18	RPB
<p>MORRISON HERSHFIELD</p> <p>DESIGNED BY: RPB</p> <p>CHECKED BY: WRJ</p> <p>DRAWN BY: DML</p> <p>APPROVED BY: BWB</p> <p>RELEASED FOR CONSTRUCTION</p>		<p>HOR SCALE: 1:250</p> <p>VERT SCALE: 1:10</p> <p>DATE: 16/03/09</p>	



THE CITY OF WINNIPEG
PUBLIC WORKS DEPARTMENT
ENGINEERING DIVISION

2016 LOCAL STREETS PACKAGE
COCKBURN STREET SOUTH
RATHGAR AV TO KYLEMORE AV
ASPHALT RECONSTRUCTION
HORIZONTAL AND VERTICAL ALIGNMENT
STA 0+170 TO KYLEMORE AV

CITY DRAWING NUMBER: N/A
SHEET 17 OF 17
DRAWING No. 17
REV B

BID OPPORTUNITY No. 180-2016