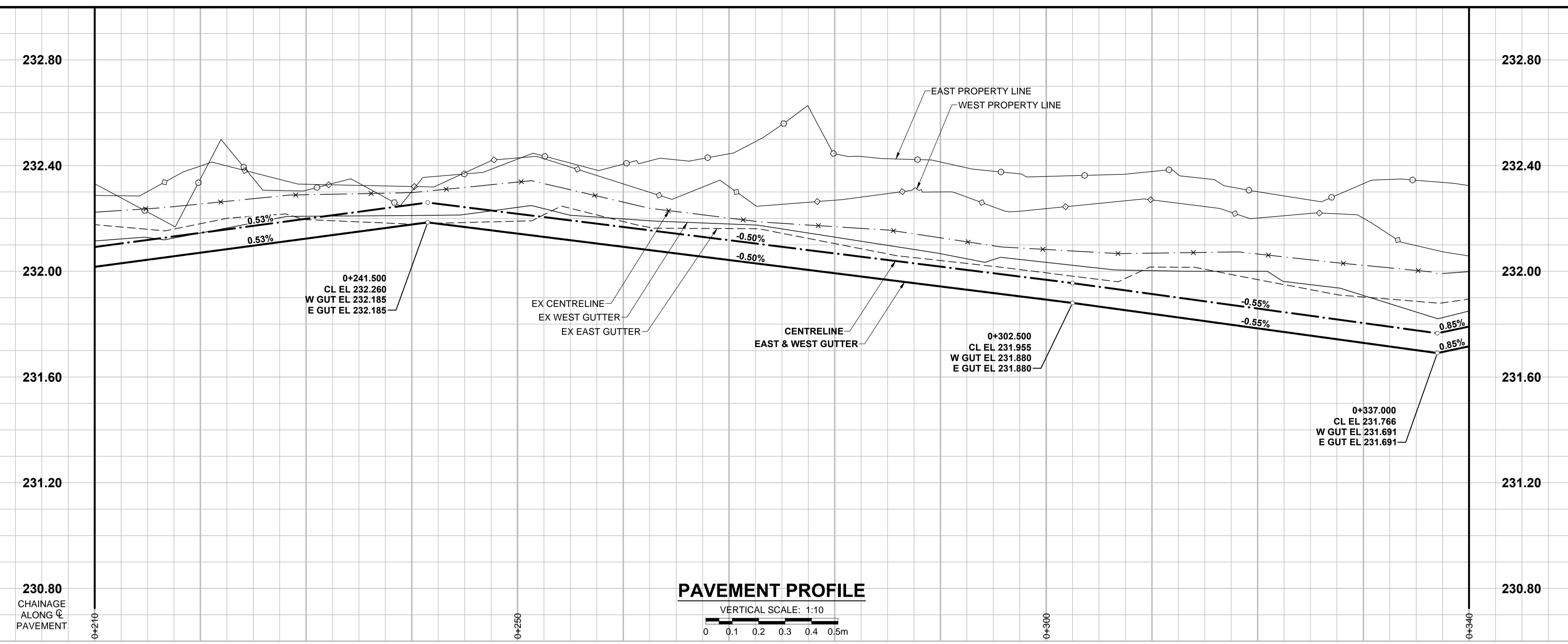
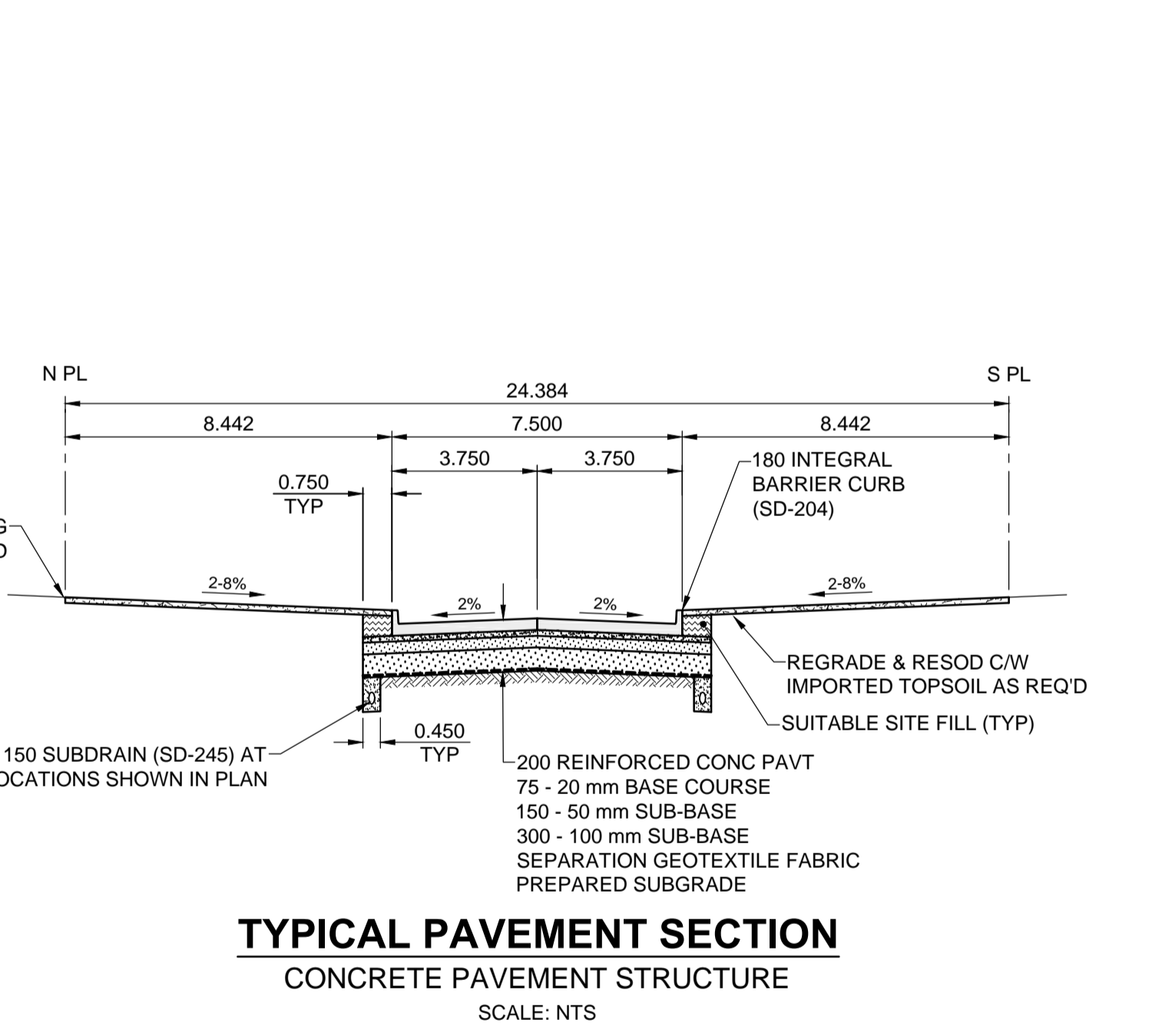
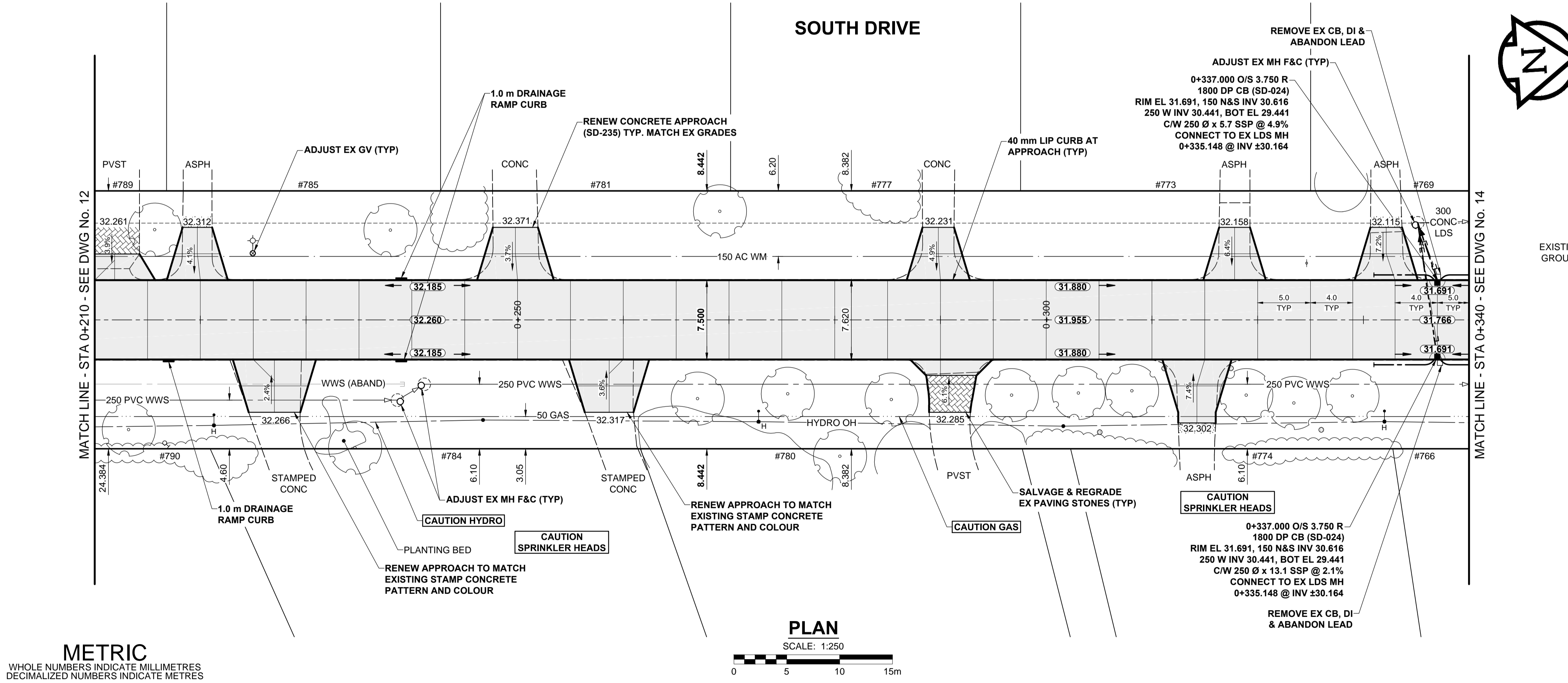


ISO A1 - 594mm x 841mm  
 K:\Proj\1600154\_Design\1\_Drawing\5\_Sheets\16-R-0201\160015-South-PP-02.dwg  
 Last Saved: 4/29/2016 2:32 PM by Dave Lane



- NOTES**
- ADJUST MH AND CB RIMS TO NEW GRADES.
  - LAMP STANDARDS, HYDRO POLES, AND ANCHORS THAT REQUIRE TEMPORARY SUPPORT, REMOVAL OR REPLACEMENT, TO BE DONE SO AT THE EXPENSE OF THE CONTRACTOR AS NECESSARY.
  - CONTRACTOR TO REGRADE/RENEW EXISTING PRIVATE SIDEWALKS TO LIMITS AS SHOWN. SIDEWALKS TO BE RENEWED WITH CONCRETE UNLESS NOTED OTHERWISE.
  - CONTRACTOR TO TAKE PRECAUTIONARY STEPS TO PROTECT EXISTING TREES WITHIN THE LIMITS OF CONSTRUCTION FROM DAMAGE FROM CONSTRUCTION ACTIVITIES AS OUTLINED IN THE SPECIFICATIONS.
  - CONTRACTOR TO CONFIRM THE LOCATION OF ALL UTILITIES/SERVICES IN THE FIELD PRIOR TO CONSTRUCTION.
  - CB SD-023 & SD-024 OFFSETS ARE DIMENSIONED TO BOC. CB SD-025 OFFSETS ARE DIMENSIONED O/C.
  - IN GENERAL, PAVEMENT AND SIDEWALK AREAS TO BE REMOVED. MATCH RECONSTRUCTION LIMITS.
  - REFER TO BID OPPORTUNITY FOR DETAILS REGARDING TRAFFIC MANAGEMENT.
  - ALL EXISTING LONG WATER SERVICES TO BE INSULATED (SD-018). REFER TO BID OPPORTUNITY FOR FURTHER REQUIREMENTS.
  - ADD 200.000m TO ABBREVIATED ELEVATIONS TO OBTAIN GEODETIC ELEVATIONS.



**METRIC**  
 WHOLE NUMBERS INDICATE MILLIMETRES  
 DECIMALIZED NUMBERS INDICATE METRES

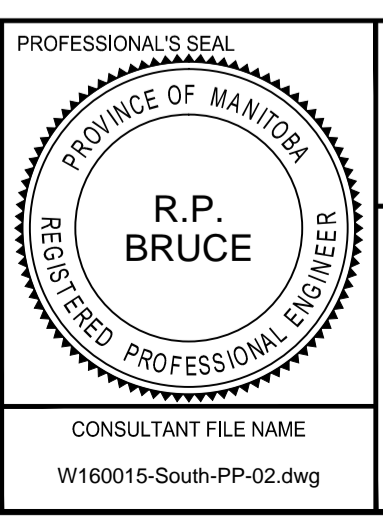
EXISTING		NEW		EXISTING		NEW		EXISTING		NEW	
LEGEND - PLAN		LEGEND - PLAN		LEGEND - PLAN		LEGEND - PLAN		LEGEND - PLAN		LEGEND - PLAN	
	GAS		MANHOLE		CONCRETE PAVEMENT		CONCRETE PAVEMENT		CONCRETE PAVEMENT		CONCRETE PAVEMENT
	MTS HANDWELL/PEDESTAL		CATCH BASIN/CATCH PIT		CONC SIDEWALK/MEDIAN		CONC SIDEWALK/MEDIAN		CONC SIDEWALK/MEDIAN		CONC SIDEWALK/MEDIAN
	HYDRO HANDWELL/CABINET		CURB INLET WITH BOX		ASPHALT PAVEMENT		ASPHALT PAVEMENT		ASPHALT PAVEMENT		ASPHALT PAVEMENT
	CATV/FIBRE OPTIC		TREE		PAVING STONE		PAVING STONE		PAVING STONE		PAVING STONE
	TRAFFIC SIGNALS/PIT		TEST HOLE		GRAVEL		GRAVEL		GRAVEL		GRAVEL
	LAND DRAINAGE SEWER		PROPERTY LINE		RAMP CURB		RAMP CURB		RAMP CURB		RAMP CURB
	SANITARY/COMBINED SEWER		SURVEY BAR		PLANING/REMOVAL		PLANING/REMOVAL		PLANING/REMOVAL		PLANING/REMOVAL
	CB LEAD/SSP/DCP		FENCE								
	WATERMAIN		BOC/EDGE OF PAVEMENT								
	SUBDRAIN		ELEVATION								
	DITCH		TRAFFIC SIGN								

**LOCATION APPROVED**  
 UNDERGROUND STRUCTURES  
 SUPR. UG STRUCTURES COMMITTEE DATE  
**NOTE:**  
 LOCATION OF UNDERGROUND STRUCTURES AS SHOWN ARE BASED ON THE BEST INFORMATION AVAILABLE BUT NO GUARANTEE IS GIVEN THAT ALL EXISTING UTILITIES ARE SHOWN OR THAT THE GIVEN LOCATIONS ARE EXACT. CONFIRMATION OF EXISTENCE AND EXACT LOCATION OF ALL SERVICES MUST BE OBTAINED FROM THE INDIVIDUAL UTILITIES BEFORE PROCEEDING WITH CONSTRUCTION.

BM 64-026	S.E. Cor. of South Dr. & Crane Ave. - 19 mm dia. x		
ELEV 232.192 m	6.1 m I.B. in Valve Box, 2.0 m N. of S.L. Crane Ave.		
C	REVISED FOR ADDENDUM 1	16/05/03	RPB
B	ISSUED FOR TENDER	16/04/26	RPB
A	ISSUED FOR CLIENT REVIEW	16/04/19	RPB
No.	REVISIONS	YY/MM/DD	BY



DESIGNED BY	RPB	CHECKED BY	WRJ
DRAWN BY	KMB	APPROVED BY	BWB
HOR SCALE		RELEASED FOR CONSTRUCTION	
VERT SCALE		DATE	
1:250		16/04/19	
1:10		DATE	
16/04/19		DATE	

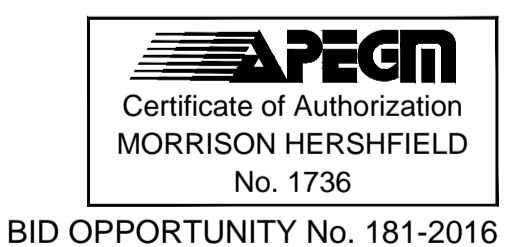


**THE CITY OF WINNIPEG**  
 PUBLIC WORKS DEPARTMENT  
 ENGINEERING DIVISION

**2016 LOCAL STREETS PACKAGE**  
**SOUTH DRIVE**  
**CRANE AV TO DOWKER AV**  
 CONCRETE RECONSTRUCTION  
 HORIZONTAL AND VERTICAL ALIGNMENT  
 STA 0+210 TO STA 0+340

CITY DRAWING NUMBER: N/A  
 SHEET 13 OF 14  
 DRAWING No. 13 REV C

CONSULTANT FILE NAME: W160015-South-PP-02.dwg



BID OPPORTUNITY No. 181-2016