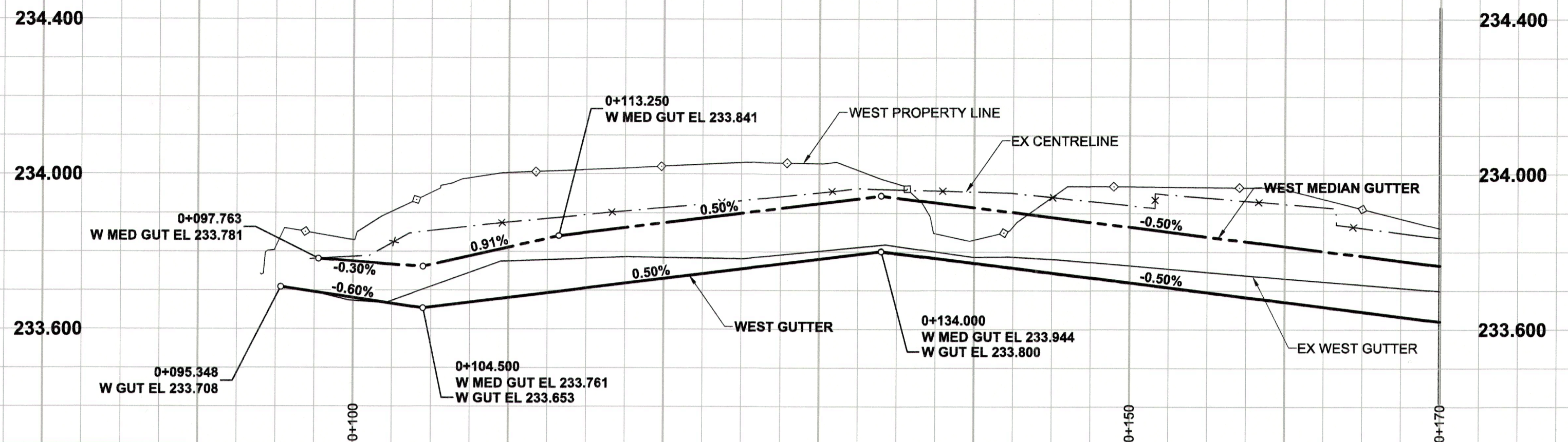
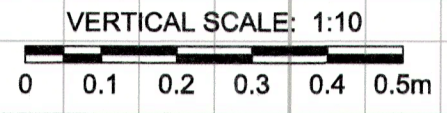
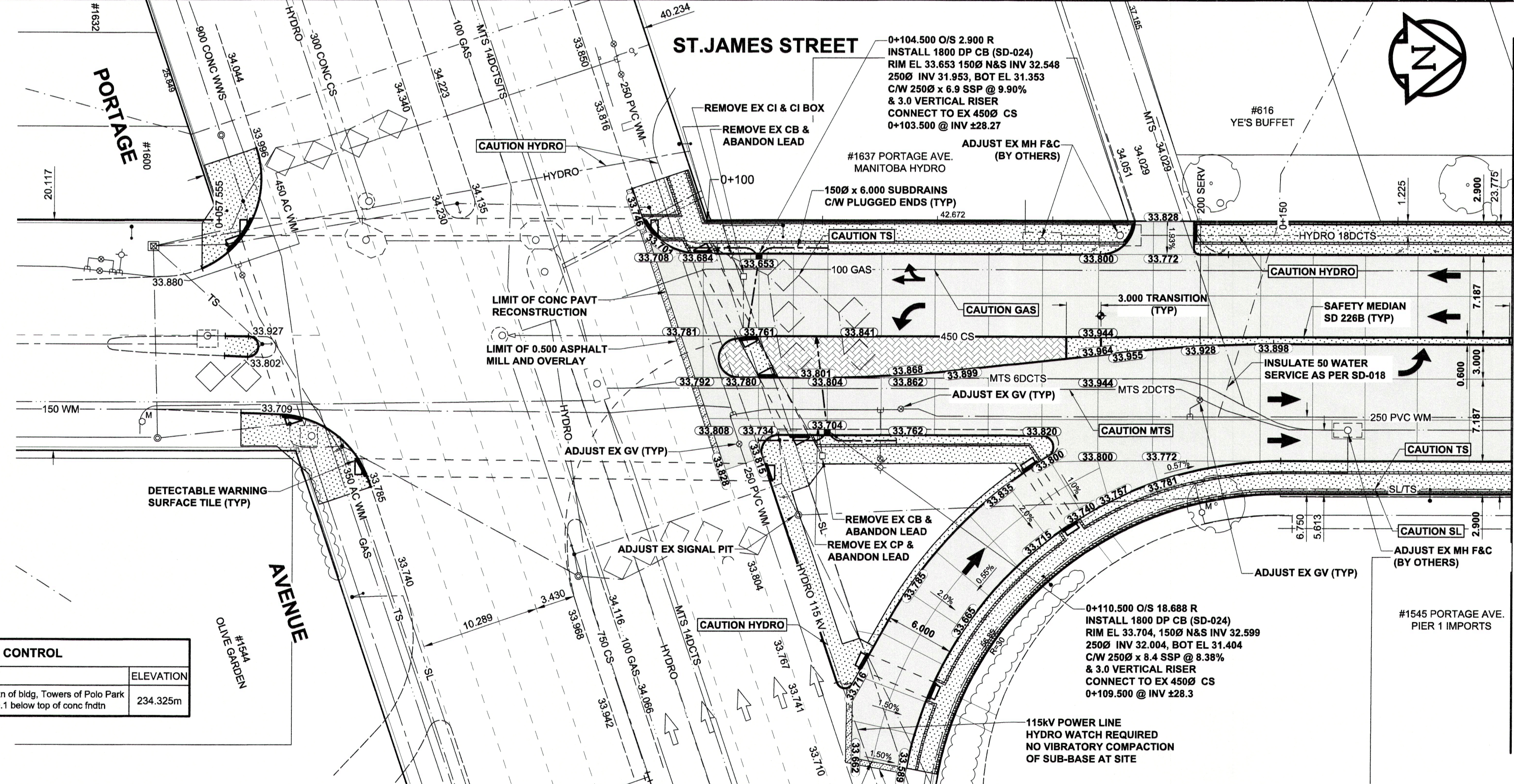
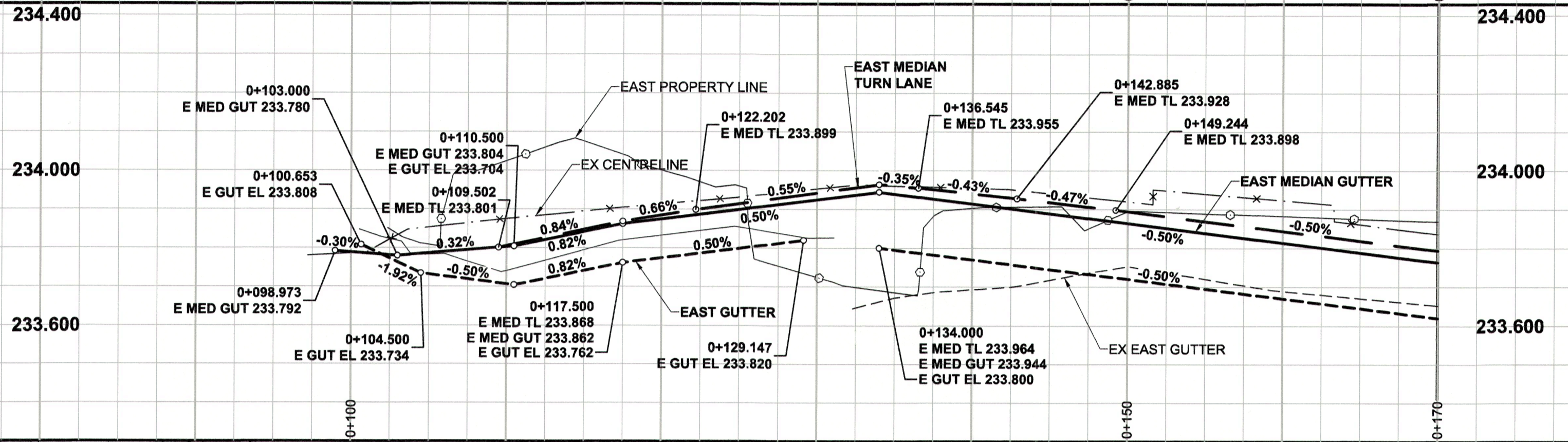
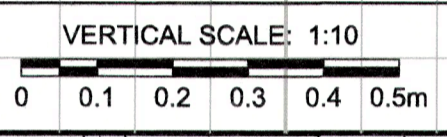


CHAINAGE ALONG WEST R

### SOUTHBOUND PAVEMENT PROFILE



### NORTHBOUND PAVEMENT PROFILE



MATCH LINE - STA 0+170 DWG. No. 6

- NOTES**
1. ADJUST MH AND CB RIMS TO NEW GRADES.
  2. CONTRACTOR TO REGRADE/RENEW EXIST PRIVATE SIDEWALKS TO LIMITS AS SHOWN. SIDEWALKS TO BE RENEWED WITH CONCRETE UNLESS NOTED OTHERWISE.
  3. CONTRACTOR TO TAKE PRECAUTIONARY STEPS TO PROTECT EXISTING TREES WITHIN THE LIMITS OF CONSTRUCTION FROM DAMAGE FROM CONSTRUCTION ACTIVITIES AS OUTLINED IN THE SPECIFICATIONS.
  4. MODIFIED BARRIER CURB TO BE CONSTRUCTED AT ALL INTERSECTION RADII, BACK LANE RADII AND BULLNOSES.
  5. CONTRACTOR TO CONFIRM THE LOCATION OF ALL UTILITIES/SERVICES IN THE FIELD PRIOR TO CONSTRUCTION.
  6. ADD 200.000m TO ABBREVIATED ELEVATIONS TO OBTAIN GEODETIC ELEVATIONS.
  7. CB SD-024 OFFSETS ARE DIMENSIONED TO BOC. CB SD-025 OFFSETS ARE DIMENSIONED O/C.
  8. SEE DRAWING No. 13 FOR STREETSCAPING DETAILS.
  9. ALL DIMENSIONS TO BACK OF CURB.

GEODETIC BENCHMARK-VERTICAL CONTROL		
GBM	LOCATION	ELEVATION
38-032	SW cor Ness Ave & St James St. Tabl in E conc fndtn of bldg, Towers of Polo Park 13m S of most Nly wall produced from the W & 0.1 below top of conc fndtn	234.325m

**METRIC**  
WHOLE NUMBERS INDICATE MILLIMETRES  
DECIMALIZED NUMBERS INDICATE METRES

EXISTING	LEGEND - PLAN	NEW	EXISTING	LEGEND - PLAN	NEW	EXISTING	LEGEND - PLAN	NEW	
	GAS		MANHOLE		CONCRETE PAVEMENT		LOCATION APPROVED		BM
	MTS / PEDESTAL		CATCH BASIN / CATCH PIT		CONC SIDEWALK / MEDIAN		SUPR. U/G STRUCTURES		ELEV
	HYDRO / CABINET		CURB INLET WITH BOX		ASPHALT PAVEMENT		DATE		
	CATV / FIBRE OPTIC		TREE		PAVING STONE		NOTE:		
	TRAFFIC SIGNALS / PIT		TEST HOLE		GRAVEL		LOCATION OF UNDERGROUND STRUCTURES AS SHOWN ARE BASED ON THE BEST INFORMATION AVAILABLE BUT NO GUARANTEE IS GIVEN THAT ALL EXISTING UTILITIES ARE SHOWN OR THAT THE GIVEN LOCATIONS ARE EXACT. CONFIRMATION OF EXISTENCE AND EXACT LOCATION OF ALL SERVICES MUST BE OBTAINED FROM THE INDIVIDUAL UTILITIES BEFORE PROCEEDING WITH CONSTRUCTION.		
	LAND DRAINAGE SEWER		PROPERTY LINE		RAMP CURB				
	SANITARY / COMBINED SEWER		SURVEY BAR		PLANING / REMOVAL				
	CB LEAD / SSP / DCP		FENCE						
	WATER MAIN		BOC / EDGE OF PAVEMENT						
	SUBDRAIN		ELEVATION						
	DITCH		TRAFFIC SIGN						

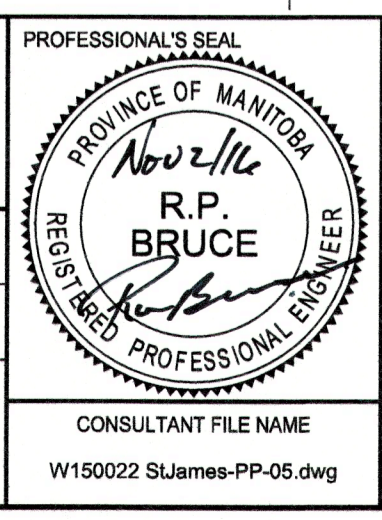
**LOCATION APPROVED UNDERGROUND STRUCTURES**

SUPR. U/G STRUCTURES COMMITTEE DATE

**NOTE:** LOCATION OF UNDERGROUND STRUCTURES AS SHOWN ARE BASED ON THE BEST INFORMATION AVAILABLE BUT NO GUARANTEE IS GIVEN THAT ALL EXISTING UTILITIES ARE SHOWN OR THAT THE GIVEN LOCATIONS ARE EXACT. CONFIRMATION OF EXISTENCE AND EXACT LOCATION OF ALL SERVICES MUST BE OBTAINED FROM THE INDIVIDUAL UTILITIES BEFORE PROCEEDING WITH CONSTRUCTION.

No.	ISSUED FOR CONSTRUCTION	DATE	BY
0	ISSUED FOR CONSTRUCTION	16/11/02	RPB
	REVISIONS	YYMMDD	BY

DESIGNED BY	WRJ	CHECKED BY	RPB
DRAWN BY	DID	APPROVED BY	BWB
HOR SCALE	1:250	RELEASED FOR CONSTRUCTION	
VERT SCALE	1:10	DATE	16/11/02



**THE CITY OF WINNIPEG PUBLIC WORKS DEPARTMENT ENGINEERING DIVISION**

**2016 REGIONAL STREET RENEWAL PROGRAM**

**ST. JAMES STREET RECONSTRUCTION**

**PORTAGE AVENUE TO MAROONS ROAD HORIZONTAL AND VERTICAL ALIGNMENT**

STA 0+040 TO STA 0+170

CITY DRAWING NUMBER: P-3475-5  
SHEET 5 OF 13  
DRAWING No. REV 5 0

BID OPPORTUNITY No. 19-2016