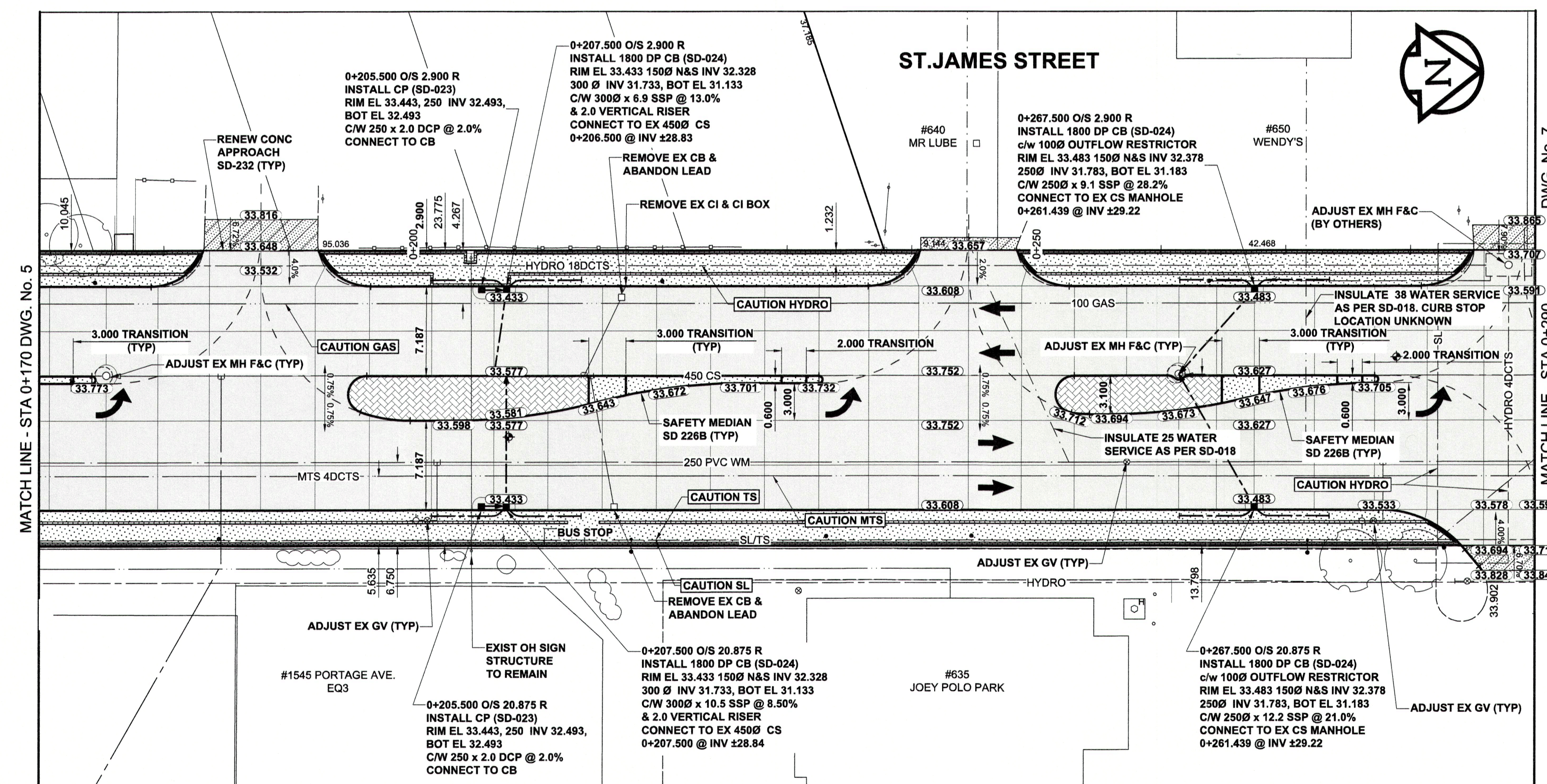
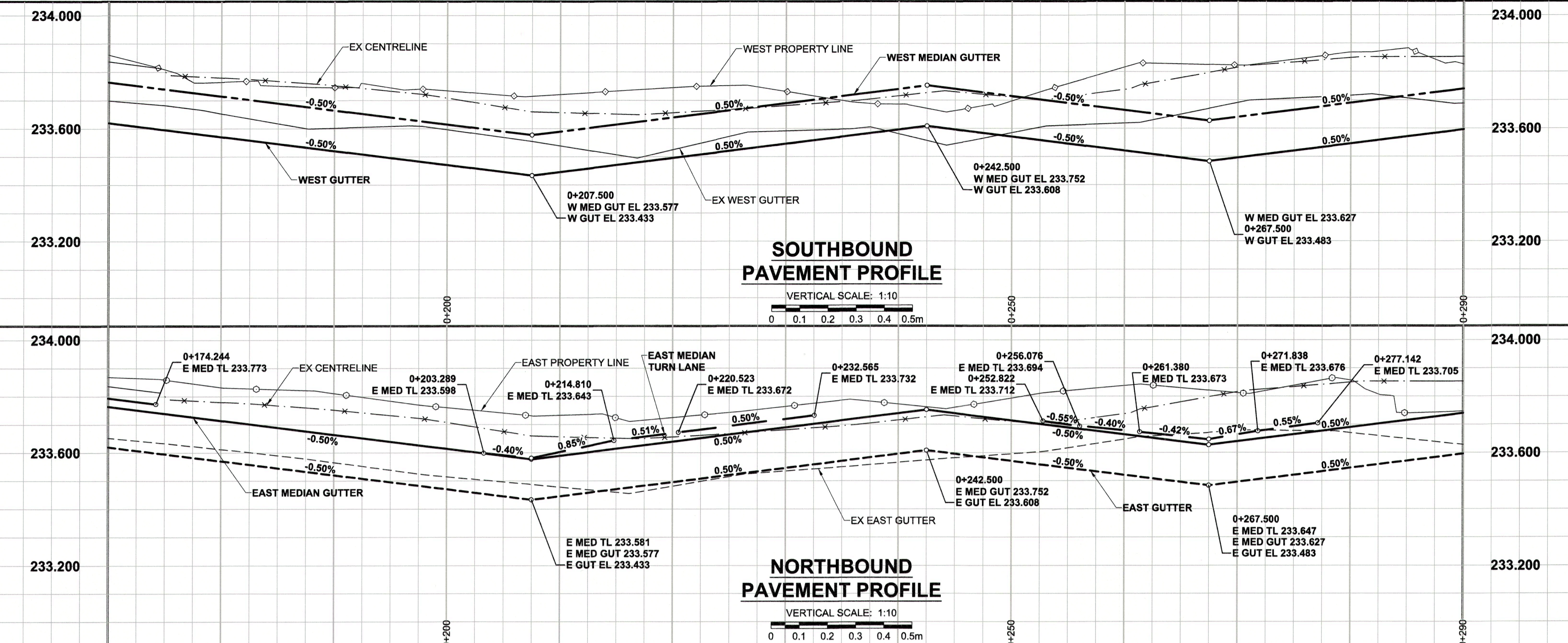


ISO A1 - 594mm x 841mm  
 M:\P\1500224\Drawings\1500224 StJames-PP-06.dwg  
 Last Saved: 10/31/2016 2:24 PM by DCozopod  
 Plotted: 10/31/2016 2:26 PM by Daniel Cozopod



- NOTES**
- ADJUST MH AND CB RIMS TO NEW GRADES.
  - CONTRACTOR TO REGRADE/RENEW EXIST PRIVATE SIDEWALKS TO LIMITS AS SHOWN. SIDEWALKS TO BE RENEWED WITH CONCRETE UNLESS NOTED OTHERWISE.
  - CONTRACTOR TO TAKE PRECAUTIONARY STEPS TO PROTECT EXISTING TREES WITHIN THE LIMITS OF CONSTRUCTION FROM DAMAGE FROM CONSTRUCTION ACTIVITIES AS OUTLINED IN THE SPECIFICATIONS.
  - MODIFIED BARRIER CURB TO BE CONSTRUCTED AT ALL INTERSECTION RADII, BACK LANE RADII AND BULLNOSES.
  - CONTRACTOR TO CONFIRM THE LOCATION OF ALL UTILITIES/SERVICES IN THE FIELD PRIOR TO CONSTRUCTION.
  - ADD 200.000m TO ABBREVIATED ELEVATIONS TO OBTAIN GEODETIC ELEVATIONS.
  - CB SD-024 OFFSETS ARE DIMENSIONED TO BOC. CB SD-025 OFFSETS ARE DIMENSIONED O/C.
  - SEE DRAWING No. 13 FOR STREETSCAPING DETAILS.
  - ALL DIMENSIONS TO BACK OF CURB.

**METRIC**  
 WHOLE NUMBERS INDICATE MILLIMETRES  
 DECIMALIZED NUMBERS INDICATE METRES

	GAS		MANHOLE		CONCRETE PAVEMENT
	MTS / PEDESTAL		CATCH BASIN / CATCH PIT		CONC SIDEWALK / MEDIAN
	HYDRO / CABINET		CURB INLET WITH BOX		ASPHALT PAVEMENT
	CATV / FIBRE OPTIC		TREE		PAVING STONE
	TRAFFIC SIGNALS / PIT		TEST HOLE		GRAVEL
	LAND DRAINAGE SEWER		PROPERTY LINE		RAMP CURB
	SANITARY/COMBINED SEWER		SURVEY BAR		PLANING / REMOVAL
	CB LEAD / SSP / DCP		FENCE		
	WATER MAIN		BOC / EDGE OF PAVEMENT		
	SUBDRAIN		ELEVATION (33.333)		
	DITCH		TRAFFIC SIGN		
	EXISTING		LEGEND - PLAN		EXISTING
	NEW		LEGEND - PLAN		NEW

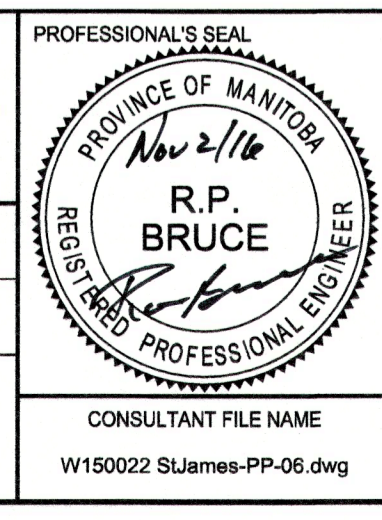
**LOCATION APPROVED**  
 UNDERGROUND STRUCTURES

SUPR. UG STRUCTURES COMMITTEE DATE

**NOTE:**  
 LOCATION OF UNDERGROUND STRUCTURES AS SHOWN ARE BASED ON THE BEST INFORMATION AVAILABLE BUT NO GUARANTEE IS GIVEN THAT ALL EXISTING UTILITIES ARE SHOWN OR THAT THE GIVEN LOCATIONS ARE EXACT. CONFIRMATION OF EXISTENCE AND EXACT LOCATION OF ALL SERVICES MUST BE OBTAINED FROM THE INDIVIDUAL UTILITIES BEFORE PROCEEDING WITH CONSTRUCTION.

BM 38-032	ELEV 234.325 m
0	ISSUED FOR CONSTRUCTION
16/11/02	RPB
YYMMDD	BY

DESIGNED BY	WRJ	CHECKED BY	RPB
DRAWN BY	DID	APPROVED BY	BWB
HOR SCALE	1:250	RELEASED FOR CONSTRUCTION	
VERT SCALE	1:10	DATE	16/11/02



**THE CITY OF WINNIPEG**  
 PUBLIC WORKS DEPARTMENT  
 ENGINEERING DIVISION

**2016 REGIONAL STREET RENEWAL PROGRAM**  
**ST. JAMES STREET**  
 RECONSTRUCTION  
 PORTAGE AVENUE TO MAROONS ROAD  
 HORIZONTAL AND VERTICAL ALIGNMENT  
 STA 0+170 TO STA 0+290

CITY DRAWING NUMBER: P-3475-6  
 SHEET: 6 OF 13  
 DRAWING No.: REV: 6 0

BID OPPORTUNITY No. 19-2016