

REFERENCE NOTES

- A. PAVEMENT DIMENSIONS ARE TO BACK OF CURB
- B. BASELINE IS CENTRE LINE RIGHT-OF-WAY
- C. PROPERTY LINES OBTAINED FROM CITY OF WINNIPEG L.B.I.S., AND NO SCALE FACTOR WAS APPLIED
- D. REFER TO AECOM FIELD BOOK NO. 4914

CONSTRUCTION NOTES

- 1. PLACE NEW ASPHALTIC PAVEMENT TYPE 1A (AVG. THICKNESS 85mm)
- 2. REMOVE EXISTING CONCRETE PAVEMENT AND CONSTRUCT NEW 150mm REINFORCED CONCRETE PAVEMENT c/w 85mm ASPHALT OVERLAY
- 3. CONSTRUCT NEW CONCRETE MOUNTABLE LIP CURB (120mm HT. INTEGRAL)
- 4. REMOVE EXISTING MOUNTABLE CURB AND CONSTRUCT NEW CONCRETE MODIFIED BARRIER CURB (100mm REVEAL HT. DOWELLED)
- 5. CONSTRUCT CURB RAMP (10mm HT. INTEGRAL)
- 6. RENEW EXISTING 100mm CONCRETE SIDEWALK
- 7. REMOVE EXISTING CATCHPIT
- 8. INSTALL NEW MOUNTABLE CURB AND GUTTER INLET c/w CATCHPIT (SD-023) AND CONNECT NEW LEAD TO EXISTING CATCHBASIN
- 9. ADJUST EXISTING WATER VALVE TO GRADE



METRIC

WHOLE NUMBERS INDICATE MILLIMETRES
DECIMALIZED NUMBERS INDICATE METRES

EXISTING	LEGEND - PLAN	PROPOSED	EXISTING	LEGEND - PLAN	PROPOSED	EXISTING	LEGEND - PROFILE	PROPOSED
	WATERMAIN			HYDRO			C PROFILE	
	HYDRANT			M.T.S.			OUTSIDE GUTTER	
	VALVE			CONCRETE			INSIDE GUTTER	
	LAND DRAINAGE SEWER			ASPHALT			N/W PROPERTY LINE	
	WASTEWATER SEWER			PROPERTY LINE			S/E PROPERTY LINE	
	MANHOLE			SURVEY BAR				
	CATCH BASIN			ELEVATION				
	CATCH PIT			TREE				
	JUNCTIONS			SIDEWALK RAMP				
	CULVERT			CONCRETE SIDEWALK				
	GAS			FENCE				

LOCATION APPROVED
UNDERGROUND STRUCTURES

SUPV. U/G STRUCTURES COMMITTEE DATE

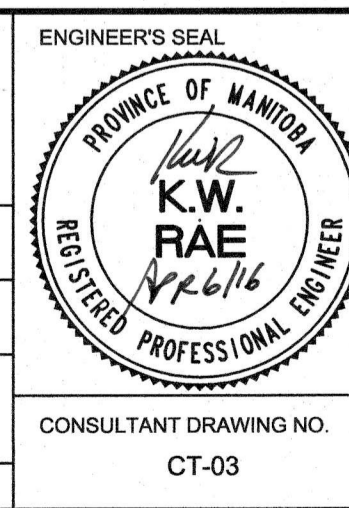
NOTE:
LOCATION OF UNDERGROUND STRUCTURES AS SHOWN ARE BASED ON THE BEST INFORMATION AVAILABLE BUT NO GUARANTEE IS GIVEN THAT ALL EXISTING UTILITIES ARE SHOWN OR THAT THE GIVEN LOCATIONS ARE EXACT. CONFIRMATION OF EXISTENCE AND EXACT LOCATION OF ALL SERVICES MUST BE OBTAINED FROM THE INDIVIDUAL UTILITIES BEFORE PROCEEDING WITH CONSTRUCTION.

B.M. 04 - 013 96R382 N.W. Cor. Jefferson Ave. & Ritchie St., T341, on top of 0.05m dia. x 2.4m iron tube, 7.6m S. of N.E. of Jefferson Ave.
ELEV. 231.781 produced from the W. & 5.5m E. of W.L. of Ritchie St.

NO.	REVISIONS	DATE	BY
0	ISSUED FOR TENDER	04/06/2016	BC
A	ISSUED FOR REVIEW	03/30/2016	BC

AECOM

DESIGNED BY	SS	CHECKED BY	BC/KWR
DRAWN BY	JT/JC/SS	APPROVED BY	
HOR. SCALE:	1:250	RELEASED FOR CONSTRUCTION BY:	
VERTICAL:	1:10	DATE	APRIL 4/16



THE CITY OF WINNIPEG
PUBLIC WORKS DEPARTMENT
ENGINEERING DIVISION

2016 LOCAL STREET RENEWAL PROGRAM

LEAHCREST CRESCENT WEST - SCARFE ST. TO ARGATE DRIVE REHABILITATION STATION 0+235 TO STATION 0+360

CITY DRAWING NUMBER SHEET 03 OF 14

CONSULTANT DRAWING NO. CT-03