

- REFERENCE NOTES**
- PAVEMENT DIMENSIONS ARE TO BACK OF CURB
  - BASELINE IS CENTRE LINE RIGHT-OF-WAY
  - PROPERTY LINES OBTAINED FROM CITY OF WINNIPEG L.B.I.S., AND NO SCALE FACTOR WAS APPLIED
  - REFER TO AECOM FIELD BOOK NO. 4914

- CONSTRUCTION NOTES**
- PLACE NEW ASPHALTIC PAVEMENT TYPE 1A (AVG. THICKNESS 85mm)
  - REMOVE EXISTING CONCRETE PAVEMENT AND CONSTRUCT NEW 150mm REINFORCED CONCRETE PAVEMENT c/w 85mm ASPHALT OVERLAY
  - CONSTRUCT NEW MOUNTABLE LIP CURB (120mm HT. INTEGRAL)
  - RENEW EXISTING 100mm CONCRETE SIDEWALK
  - ADJUST EXISTING WATER VALVE TO GRADE



**METRIC**  
WHOLE NUMBERS INDICATE MILLIMETRES  
DECIMALIZED NUMBERS INDICATE METRES

EXISTING	LEGEND - PLAN	PROPOSED	EXISTING	LEGEND - PLAN	PROPOSED	EXISTING	LEGEND - PROFILE	PROPOSED
	WATERMAIN			HYDRO M.T.S.			OUTSIDE GUTTER	
	HYDRANT			CONCRETE			INSIDE GUTTER	
	VALVE			ASPHALT			N/W PROPERTY LINE	
	LAND DRAINAGE SEWER			PROPERTY LINE			S/E PROPERTY LINE	
	WASTEWATER SEWER			SURVEY BAR			ELEVATION	
	MANHOLE			TREE			SIDEWALK RAMP	
	CATCH BASIN			CONCRETE SIDEWALK FENCE				
	CATCH PIT							
	JUNCTIONS							
	CULVERT							
	GAS							

**LOCATION APPROVED UNDERGROUND STRUCTURES**

SUPV. U/G STRUCTURES COMMITTEE DATE

**NOTE:**  
LOCATION OF UNDERGROUND STRUCTURES AS SHOWN ARE BASED ON THE BEST INFORMATION AVAILABLE BUT NO GUARANTEE IS GIVEN THAT ALL EXISTING UTILITIES ARE SHOWN OR THAT THE GIVEN LOCATIONS ARE EXACT. CONFIRMATION OF EXISTENCE AND EXACT LOCATION OF ALL SERVICES MUST BE OBTAINED FROM THE INDIVIDUAL UTILITIES BEFORE PROCEEDING WITH CONSTRUCTION.

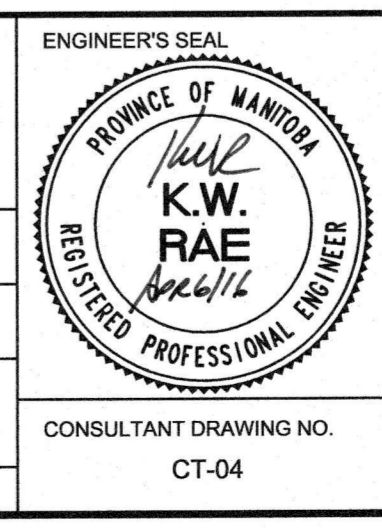
B.M. 04 - 013 86R382 N.W. Cor. Jefferson Ave. & Ritchie St., Tst. on top of 0.05m dia. x 2.4m iron tube, 7.8m S. of N.L. of Jefferson Ave.  
ELEV. 231.781 produced from the W. & 5.5m E. of W.L. of Ritchie St.

NO.	REVISIONS	DATE	BY	DATE
0	ISSUED FOR TENDER	04/06/2016	BC	
A	ISSUED FOR REVIEW	03/30/2016	BC	

**AECOM**

DESIGNED BY	SS	CHECKED BY	BC/KWR
DRAWN BY	JT/JC/SS	APPROVED BY	
RELEASED FOR CONSTRUCTION BY		DATE	APRIL 11/16

CONSULTANT DRAWING NO. CT-04



**THE CITY OF WINNIPEG**  
PUBLIC WORKS DEPARTMENT  
ENGINEERING DIVISION

2016 LOCAL STREET RENEWAL PROGRAM

LEAHCREST CRESCENT WEST - SCARFE ST. TO ARGATE DRIVE REHABILITATION STATION 0+360 TO STATION 0+470

CITY DRAWING NUMBER SHEET 04 OF 14