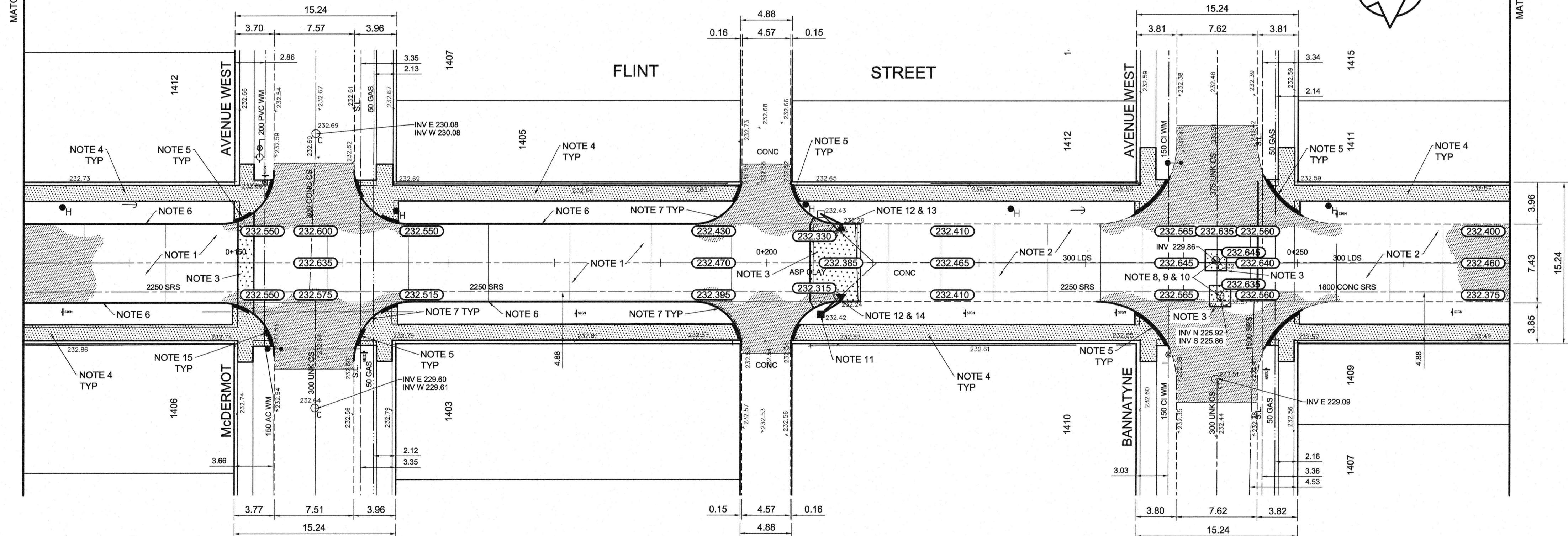
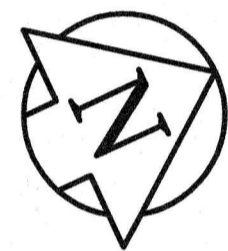


MATCHLINE 0+130

MATCHLINE 0+270

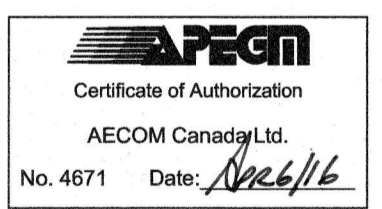


REFERENCE NOTES

- A. PAVEMENT DIMENSIONS ARE TO BACK OF CURB
- B. BASELINE IS CENTRE LINE RIGHT-OF-WAY
- C. PROPERTY LINES OBTAINED FROM CITY OF WINNIPEG L.B.I.S., AND NO SCALE FACTOR WAS APPLIED
- D. REFER TO AECOM FIELD BOOK NO. 4910

CONSTRUCTION NOTES

1. REMOVE EXISTING ASPHALT AND PLACE NEW ASPHALTIC PAVEMENT OVERLAY TYPE 1A (85mm AVG. HT.)
2. PLACE NEW ASPHALTIC PAVEMENT TYPE 1A (85mm AVG. HT.)
3. REMOVE EXISTING CONCRETE PAVEMENT AND CONSTRUCT NEW 150mm REINFORCED CONCRETE PAVEMENT c/w 85mm ASPHALT OVERLAY TYPE 1A
4. RENEW EXISTING 100mm CONCRETE SIDEWALK
5. CONSTRUCT NEW RAMP CURB (10mm HT. INTEGRAL)
6. REMOVE EXISTING BARRIER CURB AND CONSTRUCT NEW CONCRETE BARRIER CURB (100mm REVEAL HT. DOWELLED)
7. REMOVE EXISTING BARRIER CURB AND CONSTRUCT NEW CONCRETE MODIFIED BARRIER CURB (180mm HT. INTEGRAL)
8. ADJUST EXISTING MANHOLE/CATCH BASIN TO GRADE
9. REMOVE EXISTING FRAME AND COVER AND PLACE NEW FRAME AND SOLID COVER (AP-004/AP-005)
10. INSTALL CAST IRON RISER RING
11. REMOVE EXISTING CATCHBASIN, INSTALL NEW CATCHBASIN (SD-024) AND CONNECT NEW LEAD TO EXISTING LEAD
12. REMOVE EXISTING CATCH PIT
13. INSTALL NEW CURB AND GUTTER INLET c/w CATCHPIT (SD-023) AND CONNECT NEW LEAD TO EXISTING CATCHBASIN
14. INSTALL NEW CURB AND GUTTER INLET c/w CATCHPIT (SD-023) AND CONNECT NEW LEAD TO NEW CATCHBASIN
15. ADJUST WATER VALVE TO GRADE
16. ADJUST CURB STOP



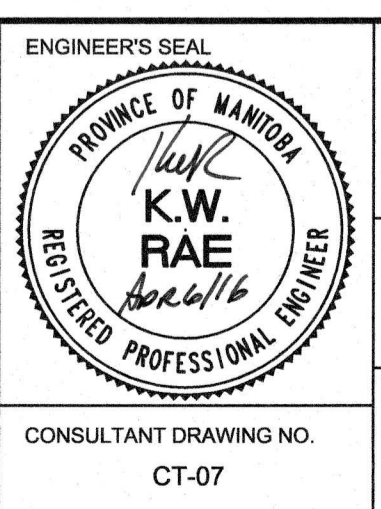
METRIC
WHOLE NUMBERS INDICATE MILLIMETRES
DECIMALIZED NUMBERS INDICATE METRES

150 mm W.M.		300mm L.D.S.		250mm W.W.S.		HYDRO		C PROFILE		LOCATION APPROVED UNDERGROUND STRUCTURES	
EXISTING	PROPOSED	EXISTING	PROPOSED	EXISTING	PROPOSED	EXISTING	PROPOSED	EXISTING	PROPOSED	EXISTING	PROPOSED
WATERMAIN	HYDRANT	VALVE	LAND DRAINAGE SEWER	WASTEWATER SEWER	MANHOLE	CATCH BASIN	CATCH PIT	JUNCTIONS	CULVERT	GAS	LEGEND - PLAN
150mm W.M.	150mm W.M.	150mm W.M.	300mm L.D.S.	250mm W.W.S.	250mm W.W.S.	235.750	235.750	235.750	235.750	235.750	LEGEND - PLAN
CONCRETE	ASPHALT	PROPERTY LINE	SURVEY BAR	ELEVATION	TREE	SIDEWALK RAMP	CONCRETE SIDEWALK	FENCE			LEGEND - PROFILE
M.T.S.	CONCRETE	ASPHALT	PROPERTY LINE	SURVEY BAR	ELEVATION	TREE	SIDEWALK RAMP	CONCRETE SIDEWALK	FENCE		LEGEND - PROFILE
OUTSIDE GUTTER	INSIDE GUTTER	N/W PROPERTY LINE	S/E PROPERTY LINE								LEGEND - PROFILE

NOTE:
LOCATION OF UNDERGROUND STRUCTURES AS SHOWN ARE BASED ON THE BEST INFORMATION AVAILABLE. BUT NO GUARANTEE IS GIVEN THAT ALL EXISTING UTILITIES ARE SHOWN OR THAT THE GIVEN LOCATIONS ARE EXACT. CONFIRMATION OF EXISTENCE AND EXACT LOCATION OF ALL SERVICES MUST BE OBTAINED FROM THE INDIVIDUAL UTILITIES BEFORE PROCEEDING WITH CONSTRUCTION.

B.M. 36 - 031 S.E. Cor. Notre Dame Ave. & Winnipeg Ave. W., Tblt in S. Conc. foundation No. 1485 Notre Dame Ave., ELEV. 233.527 1m E. & 0.3m below Conc. blocks of S.W. Cor. Bldg.

DESIGNED BY	SS	CHECKED BY	KWR
DRAWN BY	JC/SS	APPROVED BY	
HOR. SCALE:	1:250	RELEASED FOR CONSTRUCTION BY:	
VERTICAL:	1:10	DATE:	APRIL 16/16



THE CITY OF WINNIPEG
PUBLIC WORKS DEPARTMENT
ENGINEERING DIVISION

2016 LOCAL STREET RENEWAL PROGRAM

FLINT STREET - NOTRE DAME AVENUE TO WILLIAM AVENUE WEST REHABILITATION STATION 0+130 TO STATION 0+270

CITY DRAWING NUMBER SHEET 07 OF 14