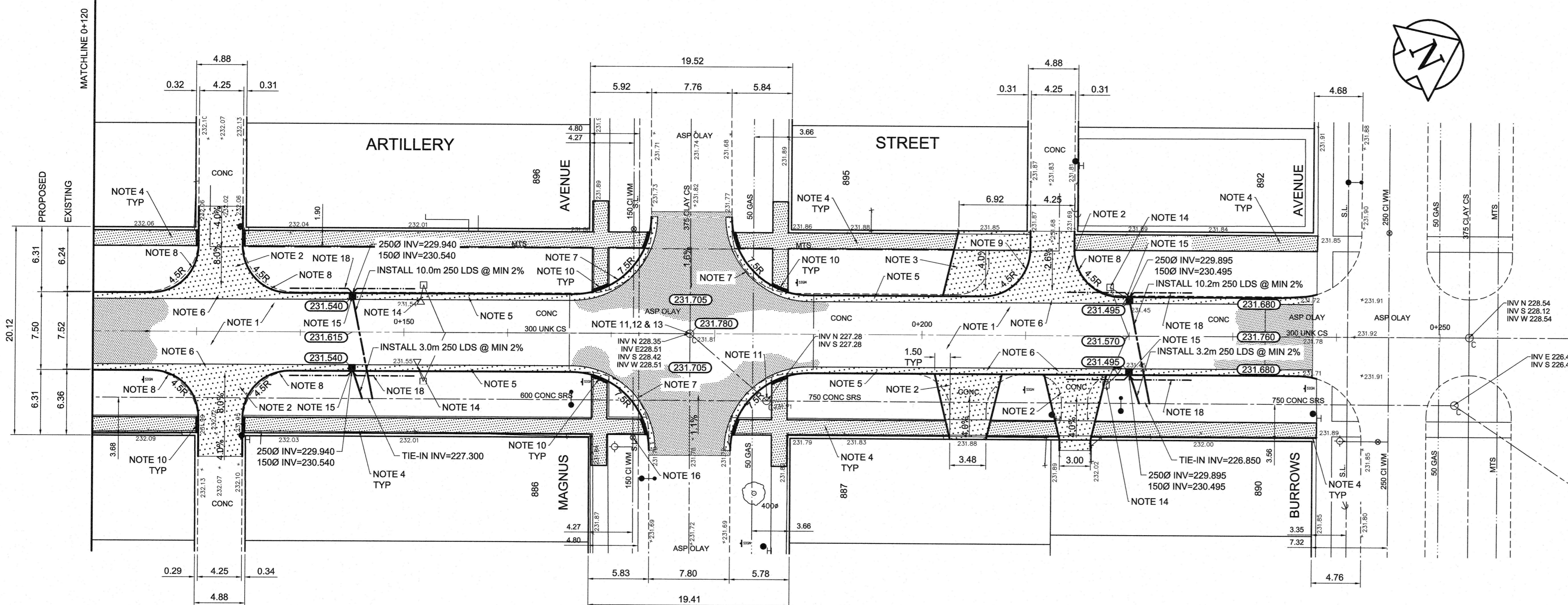


TYPICAL CROSS SECTION



REFERENCE NOTES

- A. PAVEMENT DIMENSIONS ARE TO BACK OF CURB
- B. BASELINE IS CENTRE LINE RIGHT-OF-WAY
- C. PROPERTY LINES OBTAINED FROM CITY OF WINNIPEG L.B.I.S., AND NO SCALE FACTOR WAS APPLIED
- D. REFER TO AECOM FIELD BOOK NO. 4910

CONSTRUCTION NOTES

1. REMOVE EXISTING CONCRETE PAVEMENT AND CONSTRUCT NEW 100mm ASPHALTIC PAVEMENT TYPE 1A
2. REMOVE EXISTING CONCRETE PAVEMENT AND CONSTRUCT NEW 150mm REINFORCED CONCRETE PAVEMENT
3. CONSTRUCT NEW 150mm REINFORCED CONCRETE PAVEMENT
4. RENEW EXISTING 100mm CONCRETE SIDEWALK
5. CONSTRUCT NEW BARRIER CURB AND GUTTER (180mm HT. INTEGRAL)
6. CONSTRUCT NEW LIP CURB AND GUTTER (40mm HT. INTEGRAL)
7. CONSTRUCT NEW MODIFIED BARRIER CURB AND GUTTER (180mm HT. INTEGRAL)
8. CONSTRUCT NEW MODIFIED BARRIER CURB (180mm HT. INTEGRAL)
9. CONSTRUCT NEW LIP CURB (40mm HT. INTEGRAL)
10. CONSTRUCT NEW RAMP CURB (10mm HT. INTEGRAL)
11. ADJUST EXISTING MANHOLE/CATCH BASIN TO GRADE
12. REMOVE FRAME AND COVER AND INSTALL NEW FRAME AND SOLID COVER (AP-004/AP-005)
13. INSTALL CAST IRON RISER RING
14. REMOVE EXISTING CATCHBASIN, CATCHPIT AND ABANDON LEAD
15. INSTALL NEW CURB AND GUTTER INLET c/w CATCHBASIN (SD-024) AND CONNECT NEW 250 PVC LEAD TO EXISTING CONC SRS
16. ADJUST WATER VALVE TO GRADE
17. ADJUST CURB STOP
18. INSTALL 150mm SUBDRAIN 6.0M ON EACH SIDE OF CATCHBASIN



METRIC
WHOLE NUMBERS INDICATE MILLIMETRES
DECIMALIZED NUMBERS INDICATE METRES

EXISTING	LEGEND - PLAN	PROPOSED	EXISTING	LEGEND - PLAN	PROPOSED	EXISTING	LEGEND - PROFILE	PROPOSED
150mm W.W.	WATERMAIN	150mm W.W.	CONCRETE	HYDRO	CONCRETE	---	---	---
300mm L.D.S.	LAND DRAINAGE SEWER	300mm L.D.S.	ASPHALT	PROPERTY LINE	ASPHALT	---	---	---
250mm W.W.S.	WASTEWATER SEWER	250mm W.W.S.	SURVEY BAR	ELEVATION	(35.750)	---	---	---
---	MANHOLE	---	TREE	SIDEWALK RAMP	---	---	---	---
---	CATCH BASIN	---	---	CONCRETE SIDEWALK	---	---	---	---
---	CATCH PIT	---	---	FENCE	---	---	---	---
---	JUNCTIONS	---	---	---	---	---	---	---
---	CULVERT	---	---	---	---	---	---	---
---	GAS	---	---	---	---	---	---	---

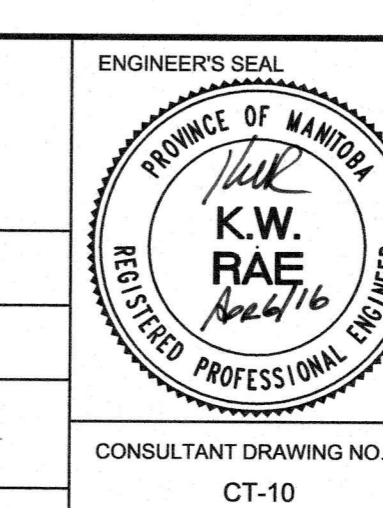
LOCATION APPROVED UNDERGROUND STRUCTURES

SUPV. U/G STRUCTURES COMMITTEE DATE

NOTE:
LOCATION OF UNDERGROUND STRUCTURES AS SHOWN ARE BASED ON THE BEST INFORMATION AVAILABLE. BUT NO GUARANTEE IS GIVEN THAT ALL EXISTING UTILITIES ARE SHOWN OR THAT THE GIVEN LOCATIONS ARE EXACT. CONFIRMATION OF EXISTENCE AND EXACT LOCATION OF ALL SERVICES MUST BE OBTAINED FROM THE INDIVIDUAL UTILITIES BEFORE PROCEEDING WITH CONSTRUCTION.

NO.	REVISIONS	DATE	BY
0	ISSUED FOR TENDER	04/06/2016	BC
A	ISSUED FOR REVIEW	03/30/2016	BC

DESIGNED BY SS		CHECKED BY BC/KWR	
DRAWN BY JC/SS		APPROVED BY	
HOR. SCALE: 1:250		RELEASED FOR CONSTRUCTION BY:	
VERTICAL: 1:10		DATE APRIL 11/16	



THE CITY OF WINNIPEG
PUBLIC WORKS DEPARTMENT
ENGINEERING DIVISION

2016 LOCAL STREET RENEWAL PROGRAM

ARTILLERY STREET - PRITCHARD AVENUE TO BURROWS AVENUE
ASPHALT RECONSTRUCT
STATION 0+120 TO BURROWS AVENUE

CITY DRAWING NUMBER
SHEET 10 OF 14