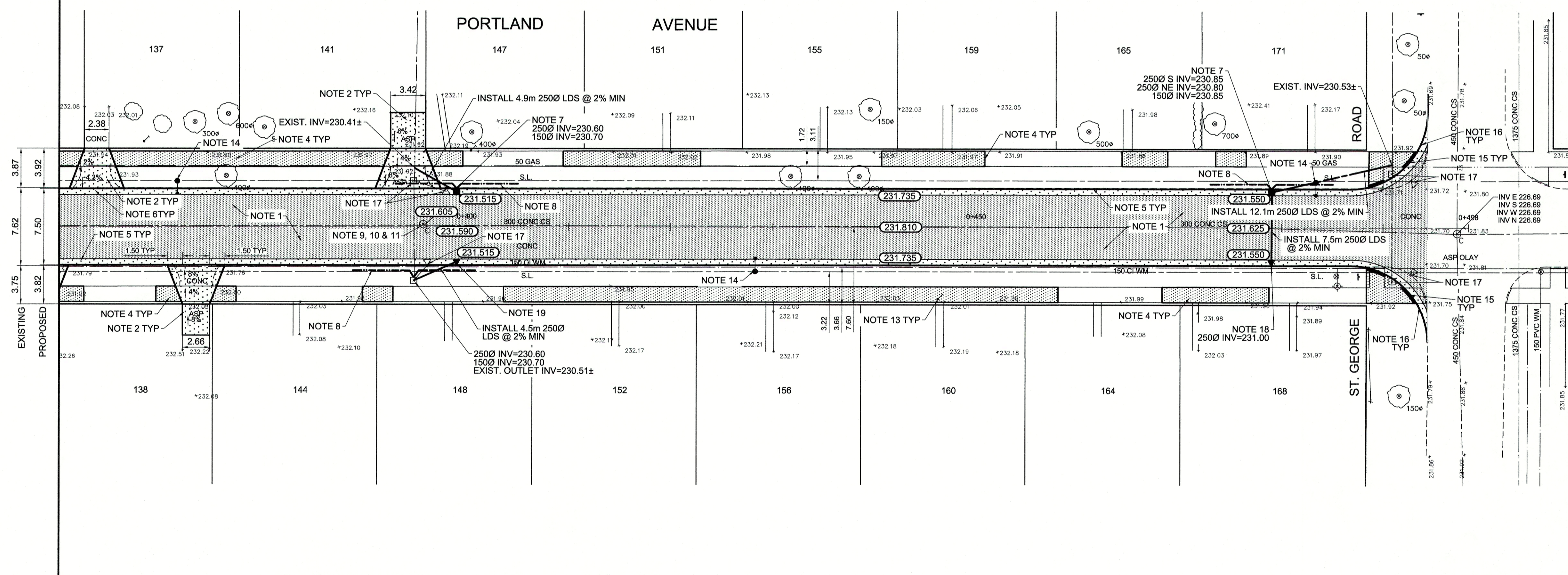
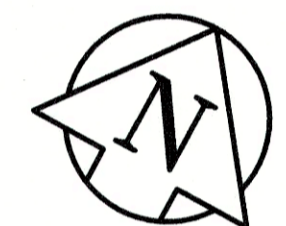


TYPICAL CROSS SECTION

MATCHLINE STATION 0+360



REFERENCE NOTES

- A. PAVEMENT DIMENSIONS ARE TO BACK OF CURB
- B. BASELINE IS CENTRE LINE RIGHT-OF-WAY
- C. PROPERTY LINES OBTAINED FROM CITY OF WINNIPEG L.B.I.S., AND NO SCALE FACTOR WAS APPLIED
- D. REFER TO AECOM FIELD BOOK NO. 4918

CONSTRUCTION NOTES

1. REMOVE EXISTING CONCRETE PAVEMENT AND CONSTRUCT NEW 100mm ASPHALTIC PAVEMENT (TYPE 1A)
2. REMOVE EXISTING CONCRETE PAVEMENT AND CONSTRUCT NEW 150mm REINFORCED CONCRETE PAVEMENT
3. REMOVE AND REINSTALL EXISTING PAVING STONES AND CONSTRUCT 150mm CONCRETE BARRIER CURB EDGING
4. RENEW EXISTING 100mm CONCRETE SIDEWALK
5. CONSTRUCT NEW BARRIER CURB AND GUTTER (180mm HT.)
6. CONSTRUCT NEW LIP CURB AND GUTTER (40mm HT. INTEGRAL)
7. INSTALL NEW CURB AND GUTTER INLET c/w 1200mm CATCH BASIN (SD-024) AND CONNECT NEW 250mm LEAD TO EXISTING LEAD
8. INSTALL 150mm SUBDRAIN
9. REMOVE EXISTING FRAME AND COVER AND PLACE NEW FRAME AND SOLID COVER (AP-004 & AP-005)
10. ADJUST EXISTING MANHOLE TO GRADE
11. INSTALL NEW CAST IRON RISER RING
12. ADJUST EXISTING WATER VALVE TO GRADE
13. ADJUST EXISTING CURB STOP
14. RELOCATE EXISTING LIGHT STANDARD
15. CONSTRUCT NEW RAMP CURB AND GUTTER (10mm HT. INTEGRAL)
16. CONSTRUCT NEW MODIFIED CURB AND GUTTER (180mm HT.)
17. REMOVE EXISTING CATCHBASIN AND INLET AND PLUG LEAD
18. INSTALL NEW CURB AND GUTTER INLET c/w CATCHPIT (SD-023) AND CONNECT NEW 250mm LEAD TO NEW CATCHBASIN
19. INSTALL NEW CURB AND GUTTER INLET c/w CATCHPIT (SD-023) AND CONNECT NEW 250mm LEAD TO EXISTING CATCHBASIN

AECOM
 Certificate of Authorization
 AECOM Canada Ltd.
 No. 4671 Date: *Apr 12/16*

METRIC
 WHOLE NUMBERS INDICATE MILLIMETRES
 DECIMALIZED NUMBERS INDICATE METRES

EXISTING	LEGEND - PLAN	PROPOSED	EXISTING	LEGEND - PLAN	PROPOSED	EXISTING	LEGEND - PROFILE	PROPOSED
150 mm W.M.	WATERMAIN	150 mm W.M.	---	HYDRO	---	---	C PROFILE	---
⊕	HYDRANT	⊕	---	M.T.S.	---	---	NORTH/WEST GUTTER	---
⊙	VALVE	⊙	---	CONCRETE	---	---	SOUTH/EAST GUTTER	---
300mm L.D.S.	LAND DRAINAGE SEWER	300mm L.D.S.	---	ASPHALT	---	---	N/W PROPERTY LINE	---
250mm W.W.S.	WASTEWATER SEWER	250mm W.W.S.	---	PROPERTY LINE	---	---	S/E PROPERTY LINE	---
○	MANHOLE	●	---	SURVEY BAR	---	---		
□	CATCH BASIN	■	---	ELEVATION	35.750	---		
▽	CATCH PIT	▼	---	TREE	---	---		
+	JUNCTIONS	+	---	SIDEWALK RAMP	---	---		
—	CULVERT	—	---	CONCRETE SIDEWALK	---	---		
---	GAS	---	---	FENCE	---	---		

LOCATION APPROVED UNDERGROUND STRUCTURES

SUPV. U/G STRUCTURES COMMITTEE DATE

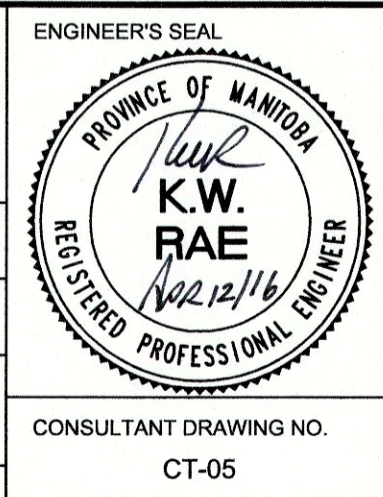
NOTE:
 LOCATION OF UNDERGROUND STRUCTURES AS SHOWN ARE BASED ON THE BEST INFORMATION AVAILABLE. BUT NO GUARANTEE IS GIVEN THAT THE GIVEN LOCATIONS ARE EXACT. CONFIRMATION OF EXISTENCE AND EXACT LOCATION OF ALL SERVICES MUST BE OBTAINED FROM THE INDIVIDUAL UTILITIES BEFORE PROCEEDING WITH CONSTRUCTION.

B.M. 54 - 037 84R737 NE corner of St Anne's Rd & Wingham Ave. 10m on pipe, 2.7m W of E Limit of St Anne's Rd & 3.8m N of N Limit of Wingham Ave

0	ISSUED FOR TENDER	04/13/2016	BC
A	ISSUED FOR REVIEW	03/31/2016	BC
NO.	REVISIONS	DATE	BY



DESIGNED BY	BC	CHECKED BY	KWR/BC
DRAWN BY	JC/PB/RT	APPROVED BY	
HOR. SCALE:	1:250	RELEASED FOR CONSTRUCTION BY:	<i>[Signature]</i>
VERTICAL:	1:10	DATE	<i>April 12/16</i>



THE CITY OF WINNIPEG
 PUBLIC WORKS DEPARTMENT
 ENGINEERING DIVISION

2016 LOCAL STREET RENEWAL PROGRAM

PORTLAND AVENUE: NEEPAWA STREET TO ST GEORGE ROAD
 ASPHALT RECONSTRUCTION
 STATION 0+360 TO ST GEORGE ROAD

CITY DRAWING NUMBER
 SHEET 5 OF 11