

- REFERENCE NOTES**
- A. PAVEMENT DIMENSIONS ARE TO BACK OF CURB
  - B. BASELINE IS CENTRE LINE RIGHT-OF-WAY
  - C. PROPERTY LINES OBTAINED FROM CITY OF WINNIPEG L.B.I.S., AND NO SCALE FACTOR WAS APPLIED
  - D. REFER TO AECOM FIELD BOOK NO. 4917

- CONSTRUCTION NOTES**
1. PLACE NEW ASPHALTIC PAVEMENT TYPE 1A (AVG. THICKNESS 85mm)
  2. REMOVE EXISTING ASPHALT AND CONSTRUCT NEW ASPHALTIC OVERLAY TYPE 1A (AVG. THICKNESS 85mm)
  3. REMOVE EXISTING CONCRETE PAVEMENT AND CONSTRUCT NEW 150mm REINFORCED CONCRETE PAVEMENT c/w 85mm ASPHALT OVERLAY
  4. RENEW EXISTING BARRIER CURB (100mm REVEAL HT. DOWELLED)
  5. CONSTRUCT NEW BARRIER CURB (100mm REVEAL HT. SEPARATE)
  6. REMOVE EXISTING BARRIER CURB AND CONSTRUCT NEW CONCRETE MODIFIED BARRIER CURB (100mm REVEAL HT. DOWELLED)
  7. CONSTRUCT NEW CONCRETE MODIFIED BARRIER CURB (100 REVEAL HT. SEPARATE)
  8. CONSTRUCT CURB RAMP (10mm HT. INTEGRAL)
  9. RENEW EXISTING 100mm CONCRETE SIDEWALK
  10. REMOVE EXISTING CATCHPIT/INLET
  11. REMOVE EXISTING CATCHBASIN
  12. INSTALL NEW CURB AND GUTTER INLET c/w CATCHPIT (SD-023) AND CONNECT TO EXISTING CATCHBASIN
  13. INSTALL NEW CURB AND GUTTER INLET c/w CATCHBASIN (SD-024) AND CONNECT TO EXISTING LEAD
  14. ADJUST EXISTING MANHOLE/CATCHBASIN
  15. REMOVE EXISTING FRAME AND COVER AND INSTALL NEW FRAME AND SOLID COVER
  16. INSTALL NEW CAST IRON RISER RING
  17. ADJUST EXISTING WATER VALVE TO GRADE
  18. ADJUST EXISTING M.T.S. MANHOLE TO GRADE
  19. CONSTRUCT NEW CONCRETE BULBNOSE
  20. REMOVE EXISTING PAVING STONES AND CONSTRUCT NEW 100mm CONCRETE SIDEWALK
  21. INSTALL DETECTABLE SURFACE WARNING TILE



**METRIC**  
WHOLE NUMBERS INDICATE MILLIMETRES  
DECIMALIZED NUMBERS INDICATE METRES

150 mm W.M.		300mm L.D.S.		250mm W.W.S.		HYDRO		C PROFILE	
	WATERMAIN		HYDRANT		VALVE		CONCRETE		ASPHALT
	LAND DRAINAGE SEWER		WASTEWATER SEWER		MANHOLE		CATCH BASIN		CATCH PIT
	JUNCTIONS		CULVERT		GAS		PROPERTY LINE		SURVEY BAR
	TREE		SIDEWALK RAMP		CONCRETE SIDEWALK		FENCE		NW GUTTER
	SE GUTTER		N/W PROPERTY LINE		S/E PROPERTY LINE		ELEVATION		(35.750)

**LOCATION APPROVED UNDERGROUND STRUCTURES**

SUPV. U/G STRUCTURES COMMITTEE DATE

**NOTE:**  
LOCATION OF UNDERGROUND STRUCTURES AS SHOWN ARE BASED ON THE BEST INFORMATION AVAILABLE. BUT NO GUARANTEE IS GIVEN THAT ALL EXISTING UTILITIES ARE SHOWN OR THAT THE GIVEN LOCATIONS ARE EXACT. CONFIRMATION OF EXISTENCE AND EXACT LOCATION OF ALL SERVICES MUST BE OBTAINED FROM THE INDIVIDUAL UTILITIES BEFORE PROCEEDING WITH CONSTRUCTION.

B.M. 34 - 05 74MS24 Tbt in E conc foundation (facing St Mary's Rd.) of flat-roofed portion of Norwood United Church, #160 St Mary's Rd., 0.6m S of NE corner

NO.	REVISIONS	DATE	BY
0	ISSUED FOR TENDER	04/13/2016	BC
A	ISSUED FOR REVIEW	03/30/2016	BC

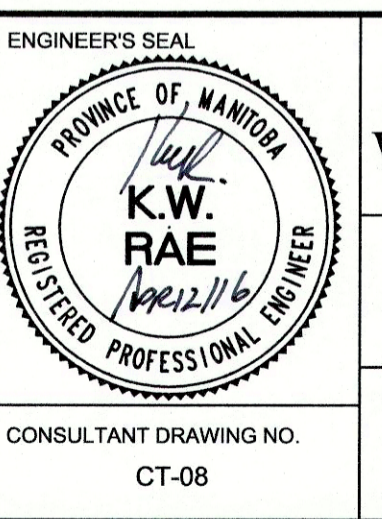
**AECOM**

DESIGNED BY: SS  
CHECKED BY: BC/KWR

DRAWN BY: JC/SS  
APPROVED BY:

HOR. SCALE: 1:250  
VERTICAL: 1:10

RELEASED FOR CONSTRUCTION BY: *[Signature]*  
DATE: April 12/16



**THE CITY OF WINNIPEG**  
PUBLIC WORKS DEPARTMENT  
ENGINEERING DIVISION

2016 LOCAL STREET RENEWAL PROGRAM

TRaverse Avenue - St. Mary's Road to Enfield Street  
REHABILITATION  
STATION 0+240 TO ENFIELD CRESCENT

CITY DRAWING NUMBER: SHEET 08 OF 11

CONSULTANT DRAWING NO. CT-08