

- REFERENCE NOTES**
- PAVEMENT DIMENSIONS ARE TO BACK OF CURB
 - BASELINE IS CENTRE LINE RIGHT-OF-WAY
 - PROPERTY LINES OBTAINED FROM CITY OF WINNIPEG L.B.I.S., AND NO SCALE FACTOR WAS APPLIED
 - REFER TO AECOM FIELD BOOK NO. 4915

- CONSTRUCTION NOTES**
- PLACE NEW ASPHALTIC PAVEMENT TYPE 1A (AVG. THICKNESS 85mm)
 - REMOVE EXISTING ASPHALT AND CONSTRUCT NEW ASPHALTIC OVERLAY TYPE 1A
 - REMOVE EXISTING CONCRETE PAVEMENT AND CONSTRUCT NEW 150mm REINFORCED CONCRETE PAVEMENT c/w 85mm ASPHALT OVERLAY
 - REMOVE EXISTING LIP CURB AND CONSTRUCT NEW CONCRETE BARRIER CURB (180mm HT. SEPARATE)
 - REMOVE EXISTING BARRIER CURB AND CONSTRUCT NEW CONCRETE MODIFIED BARRIER CURB (100mm REVEAL HT. DOWELLED)
 - CONSTRUCT RAMP CURB (10mm HT. INTEGRAL)
 - RENEW EXISTING 100mm CONCRETE SIDEWALK
 - REMOVE EXISTING CATCHPIT
 - INSTALL NEW MOUNTABLE CURB AND GUTTER INLET c/w CATCHPIT (SD-023) AND CONNECT NEW LEAD TO EXISTING CATCHBASIN
 - ADJUST EXISTING WATER VALVE TO GRADE
 - ADJUST EXISTING MANHOLE/CATCHBASIN TO GRADE
 - REMOVE EXISTING FRAME AND INSTALL NEW FRAME AND SOLID COVER
 - INSTALL NEW CAST IRON RISER RING
 - ADJUST EXISTING PATIO BLOCKS

AECOM
 Certificate of Authorization
 AECOM Canada Ltd.
 No. 4671 Date: *Apr 12/16*

METRIC
 WHOLE NUMBERS INDICATE MILLIMETRES
 DECIMALIZED NUMBERS INDICATE METRES

EXISTING	LEGEND - PLAN	PROPOSED	EXISTING	LEGEND - PLAN	PROPOSED	EXISTING	LEGEND - PROFILE	PROPOSED
150 mm W.M.	WATERMAIN	150 mm W.M.	HYDRO	---	---	---	C PROFILE	---
Hydrant symbol	HYDRANT	Hydrant symbol	M.T.S.	---	---	---	N/W GUTTER	---
Valve symbol	VALVE	Valve symbol	CONCRETE	---	---	---	S/E GUTTER	---
300mm L.D.S.	LAND DRAINAGE SEWER	300mm L.D.S.	ASPHALT	---	---	---	N/W PROPERTY LINE	---
250mm W.W.S.	WASTEWATER SEWER	250mm W.W.S.	PROPERTY LINE	---	---	---	S/E PROPERTY LINE	---
Manhole symbol	MANHOLE	Manhole symbol	SURVEY BAR	---	---	---		
Catch basin symbol	CATCH BASIN	Catch basin symbol	ELEVATION	(35.750)				
Catch pit symbol	CATCH PIT	Catch pit symbol	TREE	---	---			
Junction symbol	JUNCTIONS	Junction symbol	SIDEWALK RAMP	---	---			
Culvert symbol	CULVERT	Culvert symbol	CONCRETE SIDEWALK	---	---			
Gas symbol	GAS	Gas symbol	FENCE	---	---			

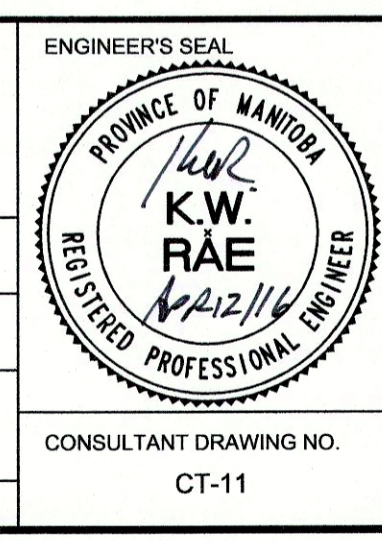
LOCATION APPROVED UNDERGROUND STRUCTURES

SUPV. U/G STRUCTURES COMMITTEE DATE

NOTE:
 LOCATION OF UNDERGROUND STRUCTURES AS SHOWN ARE BASED ON THE BEST INFORMATION AVAILABLE. BUT NO GUARANTEE IS GIVEN THAT ALL EXISTING UTILITIES ARE SHOWN OR THAT THE GIVEN LOCATIONS ARE EXACT. CONFIRMATION OF EXISTENCE AND EXACT LOCATION OF ALL SERVICES MUST BE OBTAINED FROM THE INDIVIDUAL UTILITIES BEFORE PROCEEDING WITH CONSTRUCTION.

B.M. 55 - 010 SW corner Cottonwood Rd & Westmount Dr. Tbit in front of Windsor Park Baptist Church. 1.5m E of ELEV. 232.498
 in front of production W wall, 0.8m below brick of NW cor bldg

DESIGNED BY	JC/SS	CHECKED BY	BC/KWR
DRAWN BY	JC/SS	APPROVED BY	
HOR. SCALE:	1:250	RELEASED FOR CONSTRUCTION BY:	<i>[Signature]</i>
VERTICAL:	1:10	DATE	<i>April 12/16</i>
0	ISSUED FOR TENDER	04/13/2016	BC
A	ISSUED FOR REVIEW	04/08/2016	BC
NO.	REVISIONS	DATE	BY



THE CITY OF WINNIPEG
 PUBLIC WORKS DEPARTMENT
 Winnipeg ENGINEERING DIVISION

2016 LOCAL STREET
 RENOVATION PROGRAM

DUSSAULT AVENUE - COTTONWOOD ROAD TO BIBEAU BAY S. LEG
 REHABILITATION
 STATION 0+200 TO BIBEAU BAY S. LEG

CITY DRAWING NUMBER
 SHEET 11 OF 11

CONSULTANT DRAWING NO.
 CT-11