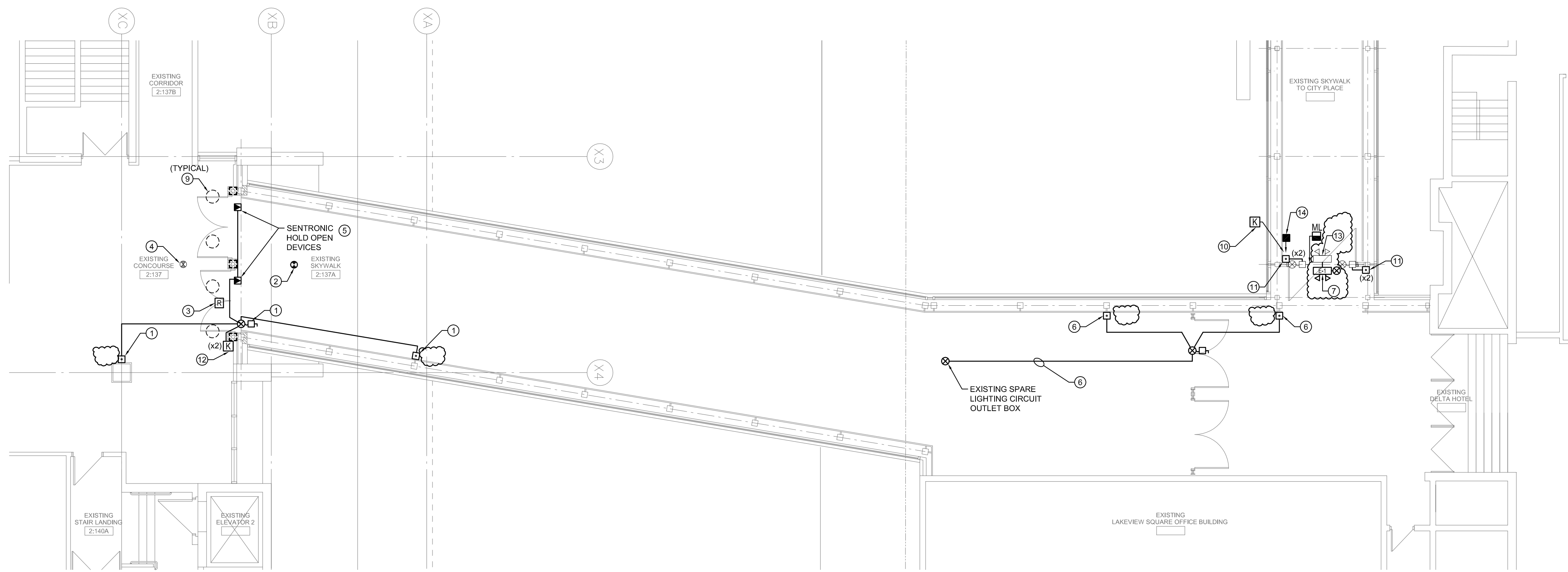


ADDRESS: 375 YORK AVENUE, WINNIPEG, MB PROJECT No: 2015-075 SHEET TITLE: LEVEL 01 - NORTHEAST ENTRANCE - LEVEL 02 NORTH SKYWALK CONNECTION - ELECTRICAL DATE: 2016.04.08 FILE NAME: 210216-2016- Drawing_E1-R4.pdf



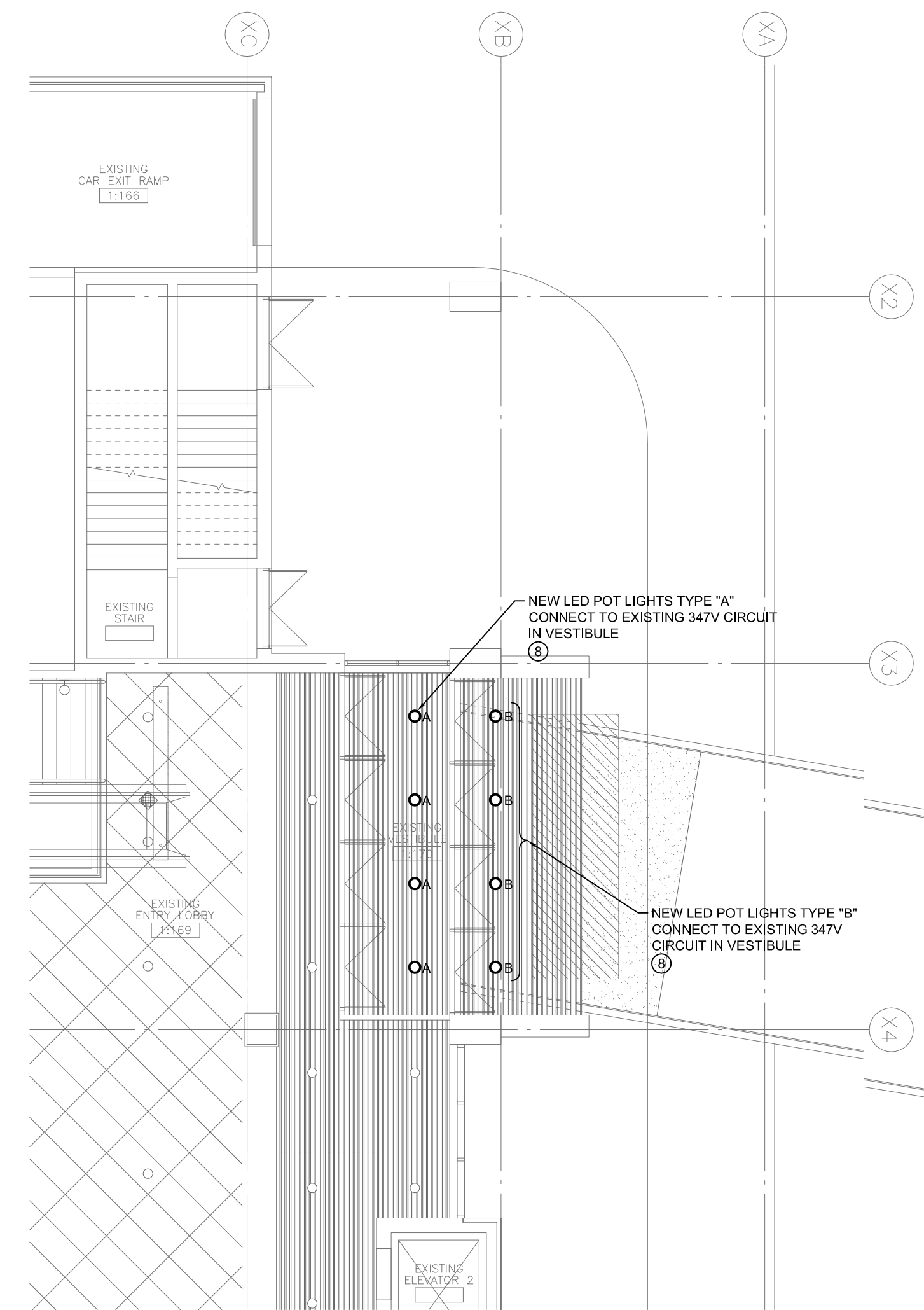
SYMBOL LEGEND	
	SMOKE DETECTOR
	MAGNETIC DOOR HOLDER BY DOOR HARDWARE
	MAGNETIC LOCK
	PROGRAMMABLE FIRE ALARM RELAY MODULE
	PUSH BUTTONS (UPPER AND LOWER BUTTONS)
	COMBINATION DISCONNECT AND JUNCTION BOX
	EXIT LIGHT/BATTERY BANK WITH DOUBLE HEAD
	POT LIGHT
	KEY SWITCH

NOTES:

KEY NOTES

- DISCONNECT EXISTING AUTOMATIC DOOR OPERATOR (ADO) AND RE-CONNECT NEW UNIT ONCE INSTALLED. CONNECT TO EXISTING CIRCUIT. DISCONNECT EXISTING PUSH BUTTON ACTIVATOR AND CONNECT NEW BAR ACTIVATOR.
- PROVIDE A NEW SMOKE DETECTOR AND CONNECT INTO CONVENTION CENTRE FIRE ALARM SYSTEM.
- PROVIDE NEW FIRE ALARM RELAY MODULE TO RELEASE DOOR HOLD OPEN DEVICES.
- EXISTING SMOKE DETECTOR ON CONVENTION CENTRE SIDE.
- WIRE AND CONNECT SENTRONIC HOLD OPEN DEVICES TO EXISTING DOOR OPERATOR 120V CIRCUIT. EXTEND WIRE AND CONDUIT AS REQUIRED. CONNECT FA RELAY MODULE INTO CIRCUIT BEFORE CONNECTION TO HOLD OPEN DEVICES.
- POWER FOR NEW ADO TO BE TAKEN FROM EXISTING SPARE LIGHTING CIRCUIT IN LINK. EXACT LOCATION OF SPARE CIRCUIT TO BE CONFIRMED ON SITE. EXTEND 2#12 IN CONDUIT AS REQUIRED. CONNECT TO NEW ADO. WIRE AND CONNECT REMOTE BAR ACTIVATOR WITH WIRE IN CONDUIT.
- PROVIDE A NEW EXIT LIGHT/BATTERY BANK C/W REMOTE HEADS AND CONNECT TO EXISTING EXIT LIGHT CIRCUIT IN THIS AREA. SEE SPECIFICATIONS FOR DETAILS.
- EXTEND WIRE AND CONDUIT AS REQUIRED.
- DISCONNECT AND REMOVE DENOTED LIGHT FIXTURES TO ALLOW FIRE RATING OF WALL ABOVE DOOR. RE-INSTALL ONCE CEILING IS RE-INSTALLED.
- WIRE AND CONNECT REMOTE KEY SWITCH INTO NEW MAGNETIC DOOR LOCK.
- EXTEND SURFACE CONDUIT DOWN DOOR FRAMES FROM EXISTING PUSHBUTTON TO NEW LOWER PUSH BUTTON. EXTEND WIRING AS REQUIRED.
- WIRE AND CONNECT ELECTRIC KEY SWITCHES SUPPLIED BY DOOR HARDWARE. CONNECT BACK TO DOOR CONTROLLER.
- PROVIDE A BLANK WHITE COVER PLATE OVER EXIT LIGHT TO REPLACE EXISTING STENCIL EXIT FACEPLATE.
- PROVIDE A NEW FIRE ALARM PULL STATION AND CONNECT INTO NORTH SKYWALK FIRE ALARM SYSTEM. EXTEND WIRE AND CONDUIT AS REQUIRED.

2 LEVEL 02 NORTH SKYWALK CONNECTION - ELECTRICAL
SCALE: 1:100



1 LEVEL 01 NORTHEAST ENTRANCE - ELECTRICAL
SCALE: 1:100

LUMINAIRE SCHEDULE					
FIXT. TYPE	LAMPS	VOLTAGE	DESCRIPTION	NOTES	APPROVED MANUFACTURERS
A	39W LED 3500K	347V	10" RECESSED LED, LENSED DOWNLIGHT C/W CUSTOM 11.25" TRIM KIT TO MATCH EXISTING LINEAR METAL CEILING AND CUSTOM COLOUR TO MATCH ARCHITECT SAMPLE 2000 LUMENS PACKAGE		SOLERA: SQ-10-39W-LED-TBD-CXA2530-CW FULL RECESSED IN METAL CEILING-ROUND GLASS
B	39W LED 3500K	347V	10" RECESSED LED, LENSED DOWNLIGHT C/W CUSTOM 11.25" TRIM KIT TO MATCH EXISTING LINEAR METAL CEILING AND CUSTOM COLOUR TO MATCH ARCHITECT SAMPLE 2000 LUMENS PACKAGE DRIVER RATED AT -40C WET LOCATION LISTED		SOLERA: SQ-10-39W-LED-TBD-CXA2530-CW FULL RECESSED IN METAL CEILING-ROUND GLASS

770 Bradford Street
Winnipeg, Canada
T 204 775-0291
SMSeng.com
16-034-01

No.	REVISION/DESCRIPTION	BY	DATE
4	ISSUED FOR ADDENDUM 1	ALG	2016.04.08
3	ISSUED FOR CONSTRUCTION	ALG	2016.03.29
2	ISSUED FOR 95% REVIEW SUBMISSION	ALG	2016.03.18
1	ISSUED FOR 65% REVIEW SUBMISSION	ALG	2016.03.10

ORIGINAL CONTRACT DRAWING SIGNED AND SEALED BY T.Y. ILYAS, P. ENG. MARCH 29, 2016

APEGM
Certificate of Authorization
SMS Engineering Ltd.
No. 166 Expiry: April 30, 2016

DRAWN	CHECKED	DESIGNED	APPROVED
IN	ALG	ALG	TYI
DATE	2016.04.08	USER	APPROVAL

THE CITY OF WINNIPEG
PLANNING, PROPERTY AND DEVELOPMENT DEPARTMENT
MUNICIPAL ACCOMMODATIONS DIVISION
3-65 GARRY STREET, R3C 4K4

PROJECT
RBC CONVENTION CENTRE
ARCHITECTURAL RESTORATION OF THE NORTH RBC CONVENTION CENTRE SKYWALK
375 YORK AVENUE

SHEET TITLE
LEVEL 01 - NORTHEAST ENTRANCE - LEVEL 02 NORTH SKYWALK CONNECTION - ELECTRICAL

SCALE	PROJECT No.	SHEET No.
AS SHOWN	2015-075	E1

DRAWING SHEET SIZE: A1 (841mm x 594mm) PLOT 1:1