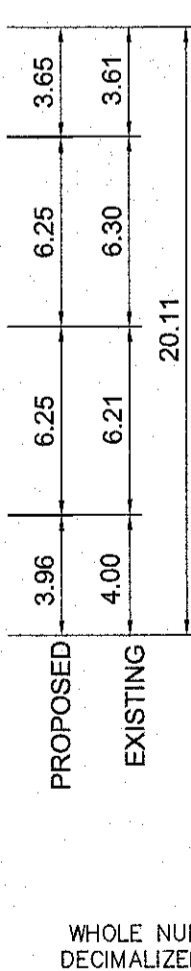


N.T.S.

CB & CP TABLE - COMBINED SEWER					
DESCRIPTION	RIM ELEV.	INVERT			
		EAST	WEST	NORTH	SOUTH
CB 13	231.415				229.815
CB 14	231.355	230.405	230.405	229.755	
CB 15	231.285				229.685
CB 16	231.225	230.275	230.275	229.625	
CP 7	231.355				230.355
CP 8	231.225				230.225

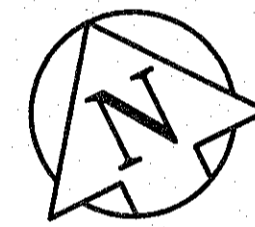
- REFERENCE NOTES
- PAVEMENT DIMENSIONS ARE TO BACK OF CURB
 - BASELINE IS CENTRELINE OF RIGHT-OF-WAY
 - PROPERTY LINES OBTAINED FROM THE CITY OF WINNIPEG L.B.I.S., AND NO SCALE FACTOR WAS APPLIED
 - REFER TO AECOM FIELD BOOK NO. 4703
 - REFER TO DWGS CT-12 TO CT-14 FOR STREETSCAPING ELEMENTS.
- CONSTRUCTION NOTES
- REMOVE EXISTING PAVEMENT, INCLUDING CONCRETE STREET CAR BEDDING AND WOOD TIES, AND CONSTRUCT NEW 230mm PLAIN DOWELED CONCRETE PAVEMENT c/w 180mm BARRIER CURB (SEPARATE)
 - CONSTRUCT NEW 200mm REINFORCED CONCRETE PAVEMENT
 - REMOVE EXISTING CONCRETE SIDEWALK/PAVER STONE SIDEWALK AND CONSTRUCT NEW 100mm SIDEWALK c/w PAVING STONE BAND (SEE APPLICABLE DETAIL, CT-14). CONTRACTOR TO SAW CUT AT PROPERTY LINE FULL LENGTH OF PROJECT
 - INSTALL NEW CURB AND GUTTER INLET c/w CATCHBASIN (SD-024) ON SOUTH SIDE (AP-008 & AP-009), AND NEW CATCHBASIN (SD-025) ON NORTH SIDE c/w SOLID COVER (AP-004 & AP-005). CONNECT NEW 250mm LEAD TO EXISTING COMBINED SEWER/MANHOLE
 - INSTALL NEW CURB AND GUTTER INLET c/w CATCHPIT (SD-023) AND CONNECT NEW 250mm LEAD TO NEW CATCHBASIN
 - REMOVE EXISTING CATCHBASIN AND ABANDON EXISTING LEAD
 - REMOVE EXISTING FRAME AND COVER AND INSTALL NEW FRAME AND SOLID COVER (AP-004 & AP-005)
 - CONSTRUCT NEW MONOLITHIC CURB RAMP (10mm HT. INTEGRAL)
 - CONSTRUCT NEW MODIFIED BARRIER CURB (180mm HT. INTEGRAL)
 - REMOVE EXISTING CURB AND GUTTER INLET AND LEAD
 - ADJUST EXISTING CATCHBASIN/MANHOLE FRAME AND COVER
 - ADJUST EXISTING WATERMAIN VALVE BOX TO GRADE
 - INSTALL NEW 50mm CAST IRON RISER RING
 - INSTALL 150mm SUBDRAIN 12m ON EACH SIDE OF CATCHBASIN
 - ADJUST EXISTING CURB STOP TO GRADE
 - INSTALL NEW DETECTABLE SURFACE WARNING TILES
 - PLACE 50mm ASPHALT PAVEMENT (TYPE 1A)
 - CONSTRUCT CONCRETE TREE WELL (REFER TO CT-14)
 - REMOVE EXISTING TREE WELL
 - EXISTING TRAFFIC SIGNALS POLE TO BE RELOCATED (BY OTHERS)
 - EXISTING STREET LIGHT POLE TO BE RELOCATED (BY OTHERS)
 - EXISTING DECORATIVE STREET LIGHTS TO REMAIN, INSTALL BRACKETS & DECORATIVE BASKETS (REFER TO CT-14)
 - INSTALL FLOW RESTRICTOR PIPE 150mm PVC SDR 35 CENTER RESTRICTOR PIPE IN CB LEAD (SD 122)
 - CONTRACTOR TO SALVAGE AND RE-INSTALL ALL GAS METER BOLLARDS DURING SIDEWALK REPLACEMENT
 - REMOVE EXISTING PAVEMENT AND CONSTRUCT NEW 200mm PLAIN DOWELED CONCRETE PAVEMENT c/w 180mm BARRIER CURB (SEPARATE)

APEGM
Certificate of Authorization
AECOM Canada Ltd.
No. 4671 Date: Feb 25/16



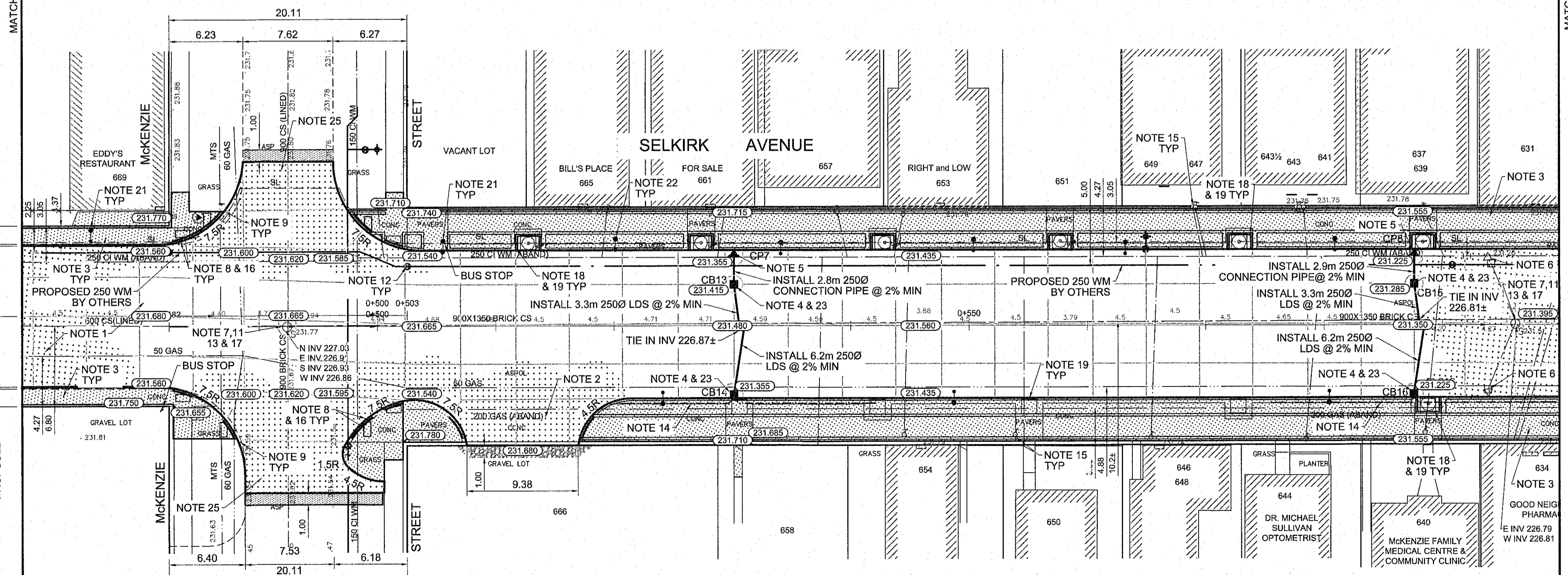
METRIC
WHOLE NUMBERS INDICATE MILLIMETRES
DECIMALIZED NUMBERS INDICATE METRES

CAUTION: SHALLOW GAS SERVICES



MATCHLINE STATION 0+470

MATCHLINE STATION 0+600



EXISTING	LEGEND - PLAN	PROPOSED	EXISTING	LEGEND - PLAN	PROPOSED	EXISTING	LEGEND - PROFILE	PROPOSED
150mm W.W.	WATERMAIN	150mm W.W.	HYDRO	M.T.S.		X	C PROFILE	
300mm L.D.S.	LAND DRAINAGE SEWER	300mm L.D.S.	CONCRETE			□	NORTH/WEST GUTTER	
250mm W.W.S.	WASTEWATER SEWER	250mm W.W.S.	ASPHALT			○	SOUTH/EAST GUTTER	
○	MANHOLE	○	PROPERTY LINE			◇	N/W PROPERTY LINE	
□	CATCH BASIN	□	SURVEY BAR			○	S/E PROPERTY LINE	
▽	CATCH PIT	▽	ELEVATION	(35.750)				
○	JUNCTIONS	○	TREE					
□	CULVERT	□	SIDEWALK RAMP					
○	GAS	○	CONCRETE SIDEWALK					
			FENCE					

LOCATION APPROVED UNDERGROUND STRUCTURES
Approved Rev'd 2014/02/17
DATE

NOTE:
LOCATION OF UNDERGROUND STRUCTURES AS SHOWN ARE BASED ON THE BEST INFORMATION AVAILABLE. BUT NO GUARANTEE IS GIVEN THAT ALL EXISTING UTILITIES ARE SHOWN OR THAT THE GIVEN LOCATIONS ARE EXACT. CONFIRMATION OF EXISTENCE AND EXACT LOCATION OF ALL SERVICES MUST BE OBTAINED FROM THE INDIVIDUAL UTILITIES BEFORE PROCEEDING WITH CONSTRUCTION.

B.M. 25 - 011 N.W. Cor. Arlington St. & Selkirk Ave. Td. In Conc. foundation of King Edward Community School, 0.5m ELEV. 232.212 W. & 0.1 m below Tyndall Stone of Most S. Ely. Cor.

AECOM

DESIGNED BY: KWR/BC
DRAWN BY: PPI/PB
HOR. SCALE: 1:250
VERTICAL: 1:10
DATE: 12/03/2015

CHECKED BY: KWR
APPROVED BY:
RELEASED FOR CONSTRUCTION BY:
DATE:

ENGINEER'S SEAL
PROVINCE OF MANITOBA
K.W. RAE
REGISTERED PROFESSIONAL ENGINEER
CONSULTANT DRAWING NO. CT-05

THE CITY OF WINNIPEG
PUBLIC WORKS DEPARTMENT
ENGINEERING DIVISION

SELKIRK AVENUE PAVEMENT RECONSTRUCTION
ARLINGTON STREET TO SALTER STREET

PLAN/PROFILE
STATION 0+470 TO STATION 0+600

CITY DRAWING NUMBER: P-3471-05
SHEET 05 OF 20