

RIGHT-OF-WAY CROSS SECTION SELKIRK AVENUE
ANDREWS STREET TO SALTER STREET
N.T.S.

REFERENCE NOTES

- A. PAVEMENT DIMENSIONS ARE TO BACK OF CURB
- B. BASELINE IS CENTRELINE OF RIGHT-OF-WAY
- C. PROPERTY LINES OBTAINED FROM THE CITY OF WINNIPEG L.B.I.S., AND NO SCALE FACTOR WAS APPLIED
- D. REFER TO AECOM FIELD BOOK NO. 4703
- E. REFER TO DWGS CT-12 TO CT-14 FOR STREETSCAPING ELEMENTS.

CONSTRUCTION NOTES

1. REMOVE EXISTING PAVEMENT, INCLUDING CONCRETE STREET CAR BEDDING AND WOOD TIES, AND CONSTRUCT NEW 230mm PLAIN DOWELLED CONCRETE PAVEMENT c/w 180mm BARRIER CURB (SEPARATE)
2. CONSTRUCT NEW 200mm REINFORCED CONCRETE SIDEWALK
3. REMOVE EXISTING CONCRETE SIDEWALK/PAVER STONE SIDEWALK AND CONSTRUCT NEW 100mm SIDEWALK c/w PAVING STONE BAND (REFER TO DETAIL 4, CT-14) CONTRACTOR TO SAW CUT AT PROPERTY LINE FULL LENGTH OF PROJECT
4. INSTALL NEW CURB AND GUTTER INLET c/w CATCHBASIN (SD024) AND CONNECT NEW 250mm LEAD TO EXISTING COMBINED SEWER/MANHOLE
5. INSTALL NEW CURB AND GUTTER INLET c/w CATCHPIT (SD023) AND CONNECT NEW 250mm LEAD TO NEW CATCHBASIN
6. REMOVE EXISTING CATCHBASIN AND ABANDON EXISTING LEAD
7. REMOVE EXISTING FRAME AND COVER AND INSTALL NEW FRAME AND SOLID COVER (AP-005 & AP-005)
8. CONSTRUCT NEW MONOLITHIC CURB RAMP (10mm HT. INTEGRAL)
9. CONSTRUCT NEW MODIFIED BARRIER CURB (180mm HT. INTEGRAL)
10. REMOVE EXISTING CURB AND GUTTER INLET AND LEAD
11. ADJUST EXISTING CATCHBASIN/MANHOLE FRAME AND COVER
12. ADJUST EXISTING WATERMAIN VALVE BOX TO GRADE
13. INSTALL NEW 50mm CAST IRON RISER RING
14. INSTALL 150mm SUBDRAIN 12m ON EACH SIDE OF CATCHBASIN
15. ADJUST EXISTING CURB STOP TO GRADE
16. INSTALL NEW DETECTABLE SURFACE WARNING TILES
17. PLACE 50mm ASPHALT PAVEMENT (TYPE 1A)
18. CONSTRUCT CONCRETE TREE WELL (REFER TO CT-14)
19. REMOVE EXISTING TREE WELL
20. EXISTING TRAFFIC SIGNAL POLE TO BE RELOCATED (BY OTHERS)
21. EXISTING STREET LIGHT POLE TO BE RELOCATED (BY OTHERS)
22. DECORATIVE BASKETS W/ ATTACHMENT BRACKETS (REFER TO CT-14)
23. REMOVE AND REINSTALL EXISTING PARKING PAY STATION (BY OTHERS)
24. CONSTRUCT BARRIER CURB (180mm high DOWELLED)
25. CONTRACTOR TO SALVAGE AND RE-INSTALL ALL GAS METER BOLLARDS DURING SIDEWALK REPLACEMENT
26. RENEW EXISTING CONCRETE SIDEWALK.



METRIC

WHOLE NUMBERS INDICATE MILLIMETRES
DECIMALIZED NUMBERS INDICATE METRES

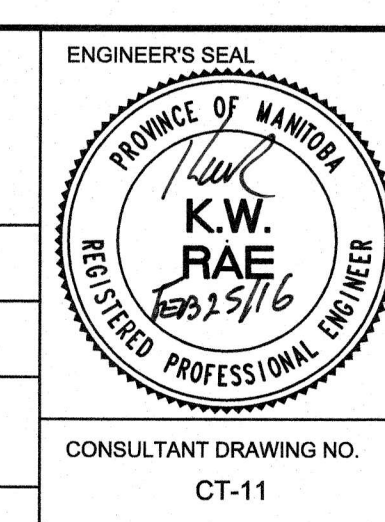
EXISTING	LEGEND - PLAN	PROPOSED	EXISTING	LEGEND - PLAN	PROPOSED	EXISTING	LEGEND - PROFILE	PROPOSED
150 mm W.M.	WATERMAIN	150 mm W.M.	HYDRO	— X —	— X —	— X —	— X —	— X —
300mm L.D.S.	LAND DRAINAGE SEWER	300mm L.D.S.	CONCRETE	— — —	— — —	— — —	— — —	— — —
250mm W.W.S.	WASTEWATER SEWER	250mm W.W.S.	ASPHALT	— — —	— — —	— — —	— — —	— — —
○	MANHOLE	○	PROPERTY LINE	— — —	— — —	— — —	— — —	— — —
□	CATCH BASIN	□	SURVEY BAR	— — —	— — —	— — —	— — —	— — —
▽	CATCH PIT	▽	ELEVATION	(35.750)	(35.750)	(35.750)	(35.750)	(35.750)
+	JUNCTIONS	+	TREE	— — —	— — —	— — —	— — —	— — —
—	CULVERT	—	SIDEWALK RAMP	— — —	— — —	— — —	— — —	— — —
—	GAS	—	CONCRETE SIDEWALK	— — —	— — —	— — —	— — —	— — —
—		—	FENCE	— — —	— — —	— — —	— — —	— — —

LOCATION APPROVED UNDERGROUND STRUCTURES
Approved 2016/02/17
 SUPV. U/G STRUCTURES COMMITTEE

NOTE:
 LOCATION OF UNDERGROUND STRUCTURES AS SHOWN ARE BASED ON THE BEST INFORMATION AVAILABLE. BUT NO GUARANTEE IS GIVEN THAT ALL EXISTING UTILITIES ARE SHOWN OR THAT THE GIVEN LOCATIONS ARE EXACT. CONFIRMATION OF EXISTENCE AND EXACT LOCATION OF ALL SERVICES MUST BE OBTAINED FROM THE INDIVIDUAL UTILITIES BEFORE PROCEEDING WITH CONSTRUCTION.

B.M. 25 - 011 N.W. Cor. Arlington St. & Selkirk Ave. Tbl. in Conc. foundation of King Edward Community School, 0.5m W. & 0.1 m below Tyndall Stone of most S. Ely. Cor.

DESIGNED BY	KWR/BC	CHECKED BY	KWR
DRAWN BY	PP/IPB	APPROVED BY	
0	ISSUED FOR TENDER	02/26/2016	KR
A	ISSUED FOR REVIEW	01/25/2016	BC
NO.	REVISIONS	DATE	BY
		12/03/2015	



THE CITY OF WINNIPEG
 PUBLIC WORKS DEPARTMENT
 ENGINEERING DIVISION

SELKIRK AVENUE PAVEMENT RECONSTRUCTION
 ARLINGTON STREET TO SALTER STREET

PLAN/PROFILE
 STATION 1+240 TO SALTER STREET

CITY DRAWING NUMBER
 P-3471-11
 SHEET 11 OF 20