

UNDERGROUND SERVICE NOTES:

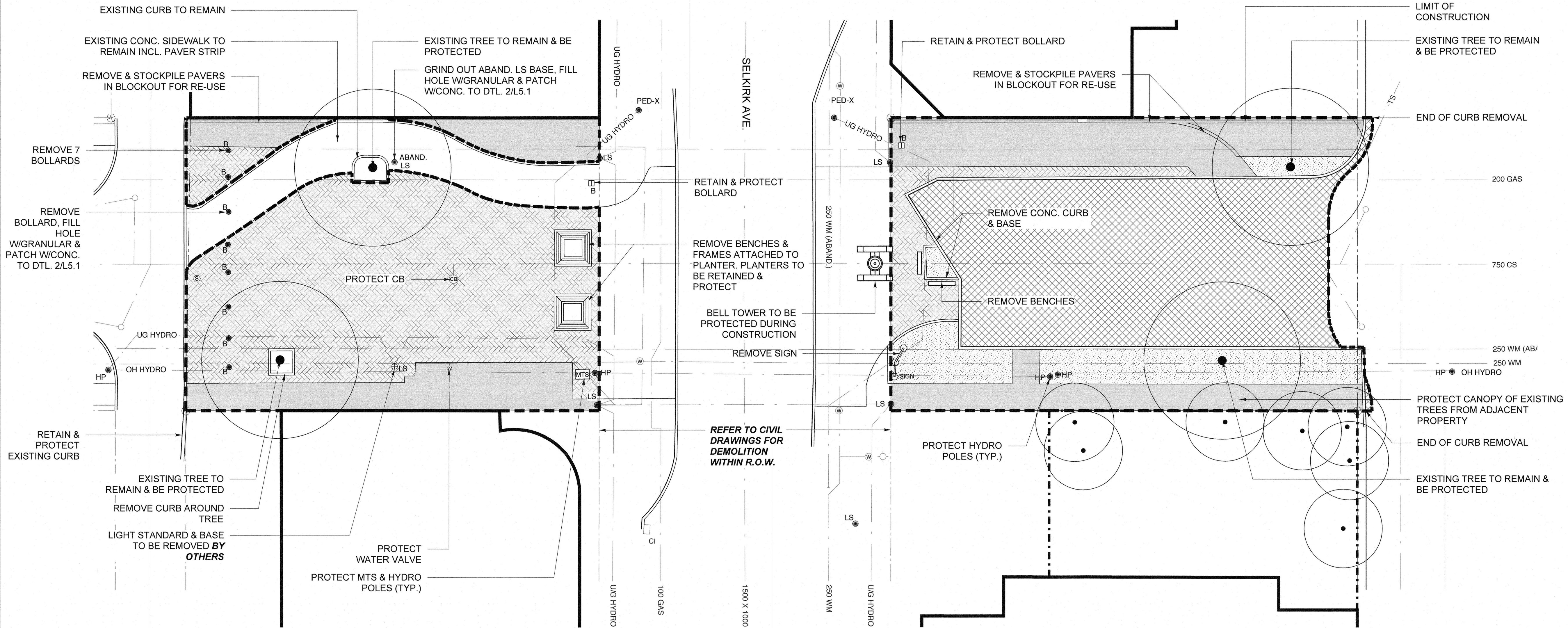
1. CONFIRM LOCATIONS OF UNDERGROUND SERVICES PRIOR TO COMMENCEMENT OF SITE WORKS.
2. REPORT ANY ENCUMBRANCES TO THE CONTRACT ADMINISTRATOR & OWNER IMMEDIATELY.

GENERAL LEGEND

- | | | | |
|---------|-------------------------|------------|---|
| MH ○ | MANHOLE | ----- | CHAIN LINK FENCE |
| CB ○ | CATCH BASIN | —200 GAS— | GAS LINES |
| CI □ | CURB INLET | —250 WM— | WATERMAIN |
| ⊙ | WATER VALVE | —750 CS— | SEWER |
| ⊙ | FIRE HYDRANT | —OH HYDRO— | OVERHEAD HYDRO |
| ● LS | LIGHT STANDARDS | —UG HYDRO— | UNDERGROUND HYDRO |
| ● PED-X | PEDESTRIAN X-WALK LIGHT | —TS— | TRAFFIC SIGNALS |
| ● HP | HYDRO POLE | ----- | LIMIT OF CONSTRUCTION |
| s ○ | SIGN | ○ | EXISTING TREES TO BE RETAINED & PROTECTED DURING CONSTRUCTION |
| B ● | BOLLARDS | | |
| ▣ | BOLLARD TO REMAIN | | |

DEMOLITION LEGEND

- | | | | |
|---|--|-------------|--|
| ▨ | REMOVE CIP CONC. SIDEWALK INCL. BASE TO THE DEPTHS REQUIRED TO ACCOMMODATE NEW CONSTRUCTION | — | REMOVE CONC. CURB & BASE |
| ▩ | REMOVE ASPHALT / PAVEMENT INCL. BASE TO THE DEPTHS REQUIRED TO ACCOMMODATE NEW CONSTRUCTION | ▭ | REMOVE BENCH |
| ▧ | REMOVE PAVING STONES INCL. BASE TO THE DEPTHS REQUIRED TO ACCOMMODATE NEW CONSTRUCTION | ● B | REMOVE WOOD BOLLARD |
| ▦ | REMOVE SOD & TOPSOIL TO DEPTHS REQUIRED. RETAIN TOPSOIL AROUND EXISTING TREES INSIDE NEW TREE WELL | ⊕ LS | LIGHT STANDARD TO BE REMOVED BY OTHERS |
| ▤ | REMOVE BENCHES & FRAMES ATTACHED TO PLANTER. PLANTERS TO BE RETAINED & PROTECTED | ● ABAND. LS | REMOVE ABANDONED LIGHT STANDARD |
| | | ⊗ | REMOVE SIGN |



1 DEMOLITION PLAN
L1.0 SCALE: 1:150

METRIC
WHOLE NUMBERS INDICATE MILLIMETRES
DECIMALIZED NUMBERS INDICATE METRES

LOCATION APPROVED UNDERGROUND STRUCTURES
Approved P-240 2014/02/17
DATE
SUPV. U/G STRUCTURES COMMITTEE

NOTE:
LOCATION OF UNDERGROUND STRUCTURES AS SHOWN ARE BASED ON THE BEST INFORMATION AVAILABLE BUT NO GUARANTEE IS GIVEN THAT ALL EXISTING UTILITIES ARE SHOWN OR THAT THE GIVEN LOCATIONS ARE EXACT. CONFIRMATION OF EXISTENCE AND EXACT LOCATION OF ALL SERVICES MUST BE OBTAINED FROM THE INDIVIDUAL UTILITIES BEFORE PROCEEDING WITH CONSTRUCTION.

| | | | |
|-----------------------|-------------------|-------------------------------|--------------|
| B.M. ELEV. | | | |
| DESIGNED BY | HC | CHECKED BY | HC |
| DRAWN BY | JH | APPROVED BY | |
| HOR. SCALE: VERTICAL: | as shown as shown | RELEASED FOR CONSTRUCTION BY: | |
| 0 Issued for Tender | 02/28/16 | JH | |
| NO. REVISIONS | DATE | BY | DATE |
| | | | FEB. 29/2016 |
| | | | FEB. 26/2016 |

ENGINEER'S SEAL
The Manitoba Association of Architects
Monica Giesbrecht
MONICA GIESBRECHT
Member No. 101
Feb 22/16

THE CITY OF WINNIPEG
PUBLIC WORKS DEPARTMENT
ENGINEERING DIVISION

SELKIRK AVENUE PAVEMENT RECONSTRUCTION
ARLINGTON STREET TO SALTER STREET

POWERS PLAZA UPGRADE
DEMOLITION PLAN

CITY DRAWING NUMBER
P-3471-15
SHEET 15 OF 20
BID NO. 24-2016

| | | | | | | | | |
|----------|---------------|----------|----------|---------------|----------|----------|------------------|----------|
| EXISTING | LEGEND - PLAN | PROPOSED | EXISTING | LEGEND - PLAN | PROPOSED | EXISTING | LEGEND - PROFILE | PROPOSED |
|----------|---------------|----------|----------|---------------|----------|----------|------------------|----------|